



Customer information packet

CECP84110T-4

40HP, 1770RPM, 3PH, 60HZ, 324TC, TEFC, F1

Class - CLI GP A,B,C,D

Division - Division II

Specifications

Enclosure	TEFC
Frame	324TC
Frame Material	Iron
Frequency	60.00 Hz
Motor Letter Type	Three Phase
Output @ Frequency	40.000 HP @ 60 HZ
Phase	3
Synchronous Speed @ Frequency	1800 RPM @ 60 HZ
Voltage @ Frequency	460.0 V @ 60 HZ
XP Class and Group	CLI GP A,B,C,D
XP Division	Division II
Agency Approvals	CCSA US CSA EEV NEMA PREMIUM NEMA_PREMIUM UR
Ambient Temperature	40 °C
Auxillary Box	No Auxillary Box
Auxillary Box Lead Termination	None
Base Indicator	Rigid
Bearing Grease Type	Polyrex EM (-20F +300F)
Blower	None
Constant Torque Speed Range	1
Current @ Voltage	46.000 A @ 460.0 V
Design Code	B
Drip Cover	No Drip Cover
Duty Rating	CONT
Efficiency @ 100% Load	94.1 %
Electrically Isolated Bearing	Not Electrically Isolated
Enclosure Modification	841
Feedback Device	NO FEEDBACK
Heater Indicator	No Heater

Part detail

Revision	G
Type	AC
Mech. spec.	
Base	
Status	PRD/A
Elec. spec.	12WGY762
Layout	12LY-000-140
Eff. date	07-19-2023
CD Diagram	CD0006
Poles	04
Leads	3#8
Proprietary	False
Created date	01-15-2019

High Voltage Full Load Amps	46.0 a
Insulation Class	F
Inverter Code	Inverter Duty
IP Rating	IP56
KVA Code	F
Lifting Lugs	Standard Lifting Lugs
Locked Bearing Indicator	Locked Bearing
Max Speed	2700 rpm
Motor Lead Termination	Ring Terminals
Motor Standards	NEMA
Motor Type	1260M
Mounting Arrangement	F1
Number of Poles	4
Overall Length	30.74 IN
Power Factor	86
Product Family	Chem Process S/P 32-8 IEEE 841
Pulley Face Code	C-Face
Rodent Screen	None
Service Factor	1.15
Shaft Diameter	2.125 IN
Shaft Ground Indicator	No Shaft Grounding
Shaft Rotation	Reversible
Speed	1770 rpm
Speed Code	Single Speed
Starting Method	Direct on line
Thermal Device - Bearing	None
Thermal Device - Winding	None
Vibration Sensor Indicator	No Vibration Sensor
Winding Thermal 1	None
Winding Thermal 2	None
XP Temp Code	T3

Nameplate

NP4332

STK.NO.	CECP84110T-4	P/N		ENCLOSURE	TEFC
SPEC.	12-0000-0419	CC	010A	FRAME	324TC
HP	40	CLASS	F	HZ	60
RPM	1770	RPM MAX	2700	ODE BRG	6312
VOLT	460	PH	3	DES	B
AMP	46	DE BRG		D.E. BRG.	60BC03X30X
RATING	40C AMB-CONT	KVA-CODE	F	O.D.E. BRG.	60BC03X30X
NEMA-NOM-EFF	94.1	MOTOR WEIGHT	600	GREASE	POLYREX EM
G.MIN.EFF	93	MAX. KVAR	8.3	BLANK	
TEMP CODE	T3	# OF ROTOR BARS	40	SER.F.	1.15
TEMP =	200	# OF STATOR SLOTS	48	IP	56
CT HZ FROM	1	PF	86	INV.TYPE	PWM
HTR-VOLTS		INVERTER-TEMP-CODE	200		
HTR-AMPS		C HP FR	60	C HP TO	90
HTR-WATTS		CT HZ TO	60		
MAX. SPACE HEATER TEMP.				VT HZ FROM	0
				VT HZ TO	60

AC Induction Motor Performance Data

Record # 49085

Typical performance - not guaranteed values

Winding: 12WGY762-R009		Type: 1260M	Enclosure: TEFC	
Nameplate Data			460 V, 60 Hz: Single Voltage Motor	
Rated Output (HP)	40	Full Load Torque	118 LB-FT	
Volts	460	Start Configuration	direct on line	
Full Load Amps	46	Breakdown Torque	305 LB-FT	
R.P.M.	1770	Pull-up Torque	146 LB-FT	
Hz	60 Phase	Locked-rotor Torque	173 LB-FT	
NEMA Design Code	B KVA Code	Starting Current	273 A	
Service Factor (S.F.)	1	No-load Current	14.3 A	
NEMA Nom. Eff.	94.1 Power Factor	Line-line Res. @ 25°C	0.16401 Ω	
Rating - Duty	40C AMB-CONT	Temp. Rise @ Rated Load	62°C	
		Locked-rotor Power Factor	26.5	
		Rotor inertia	7.99 lb-ft ²	

Load Characteristics 460 V, 60 Hz, 40 HP

% of Rated Load	25	50	75	100	125	150
Power Factor	57	77	84	86	87	86
Efficiency	92.6	94.7	94.8	94.3	93.5	92.5
Speed	1794.1	1788	1780.8	1773.7	1765.2	1756.6
Line amperes	18.1	25.6	35.6	46.1	57.9	70.1

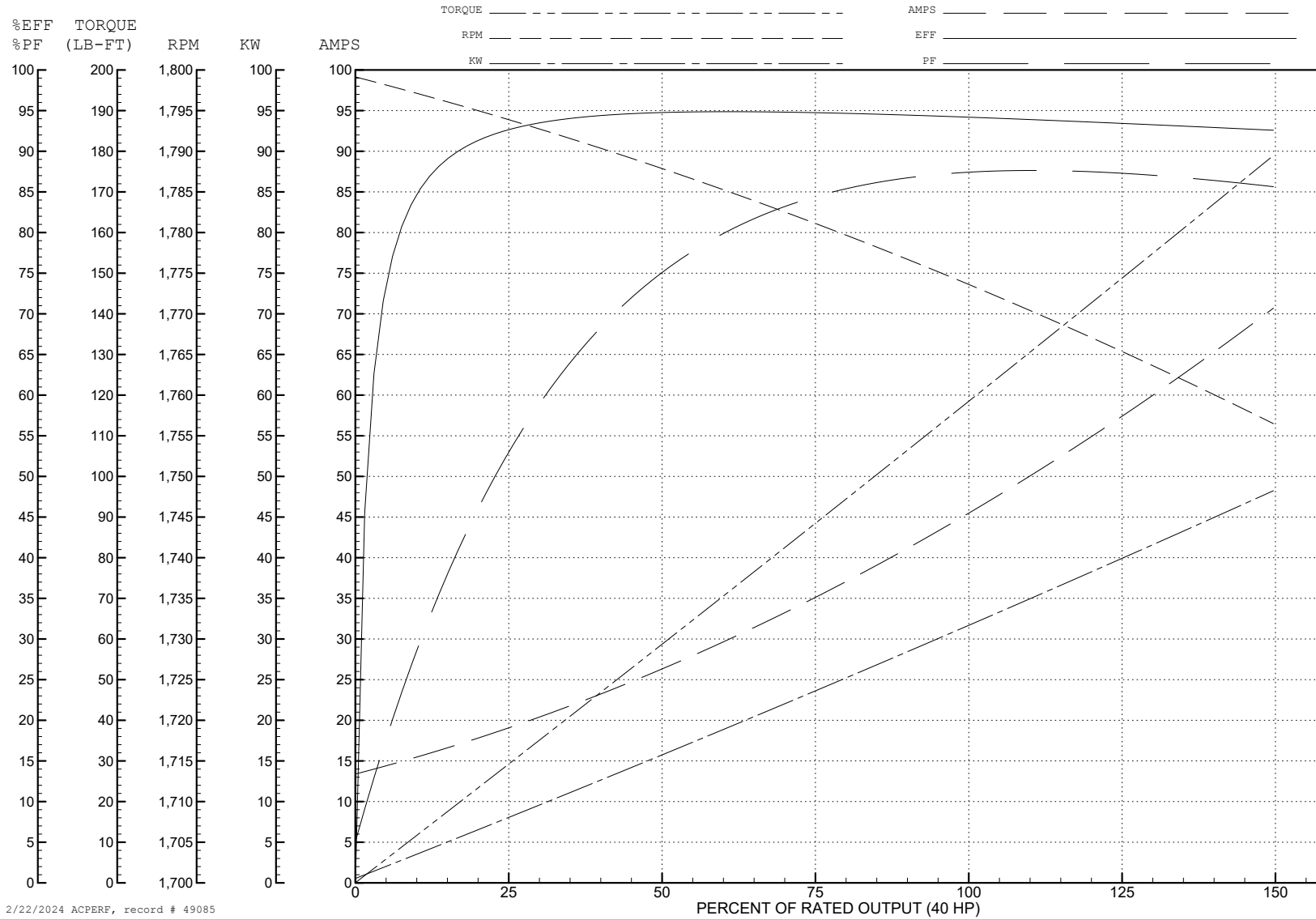
ABB Motors and Mechanical Inc.

WINDING # 12WGY762

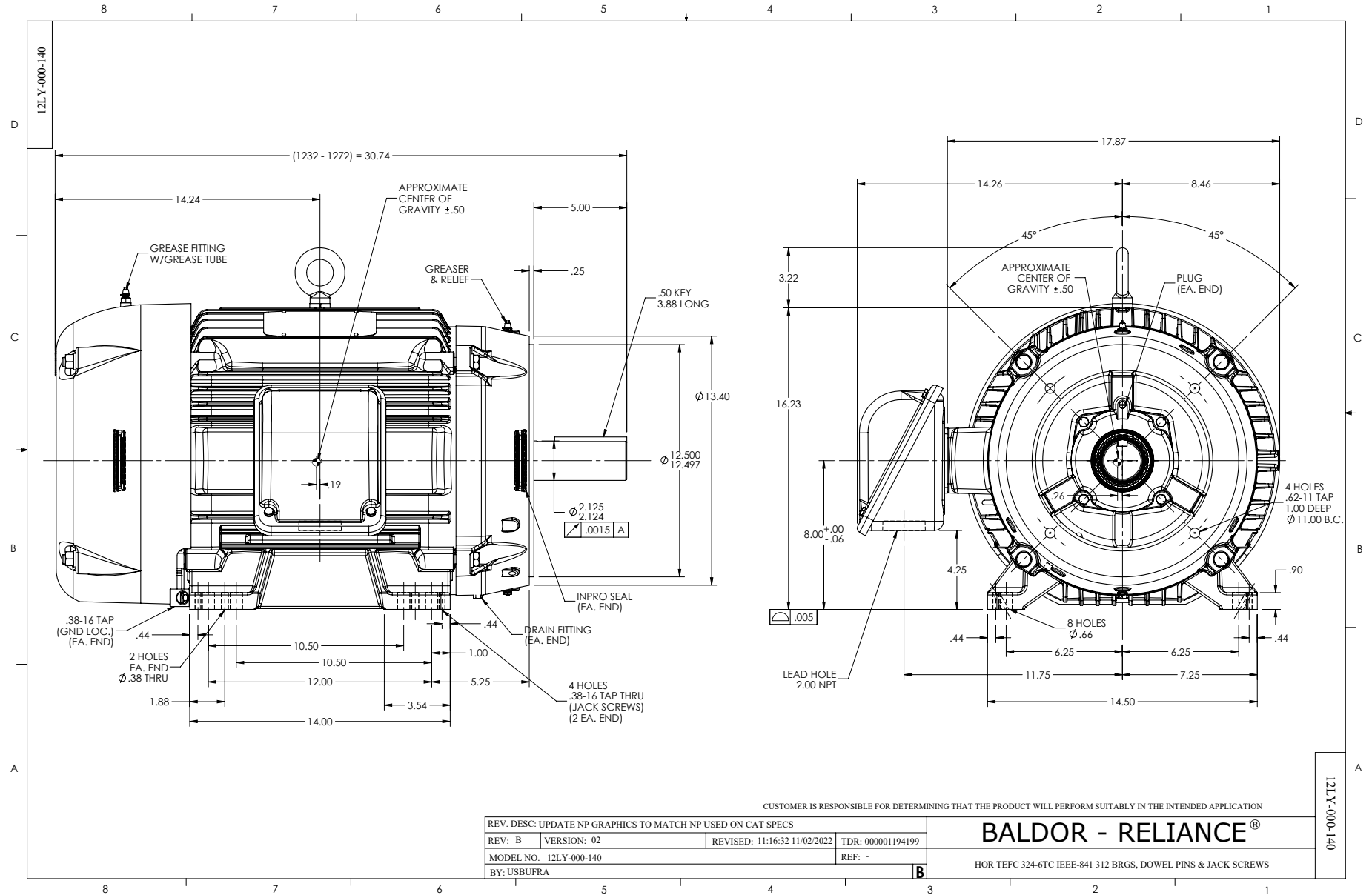
Typical performance - not guaranteed values.

40 HP 3 PH 60 HZ 1770 RPM 460 V 1260M

TORQUES (LB-FT): PO=305 PU=146 LR=173 LRA=273



2/22/2024 ACPERF, record # 49085



CD0006



NOTES:

1. THREE LEAD MOTOR MAY BE EITHER WYE CONNECTED OR DELTA CONNECTED.
2. INTERCHANGE ANY TWO LINE LEADS TO REVERSE ROTATION.
3. OPTIONAL THERMOSTATS ARE PROVIDED WHEN SPECIFIED.
4. ACTUAL NUMBER OF INTERNAL PARALLEL CIRCUITS MAY VARY.
5. LEAD COLORS ARE OPTIONAL. LEADS MUST BE NUMBERED AS SHOWN.

CD0006

REV. DESC: ADD CLASS CONN00000007		
REV. LTR: E	VERSION: 01	TDR: 000001099922
FILE: \AAA\00005\141	REVISED: 10:24:49 02/19/2019	BY: ENBRIRO
MTL: -	© □	

BALDOR - RELIANCE®

3PH, SV, 3 LEADS, WYE OR DELTA CONNECTED

SH 1 of 1