



---

# Customer information packet

## CECP83768T-4

5HP, 1160RPM, 3PH, 60HZ, 215TC, 0748M, TEFC, F1

Class - CLI GP A,B,C,D

Division - Division II

## Specifications

Enclosure	TEFC
Frame	215TC
Frame Material	Iron
Frequency	60.00 Hz
Motor Letter Type	Three Phase
Output @ Frequency	5.000 HP @ 60 HZ
Phase	3
Synchronous Speed @ Frequency	1200 RPM @ 60 HZ
Voltage @ Frequency	460.0 V @ 60 HZ
XP Class and Group	CLI GP A,B,C,D
XP Division	Division II
Agency Approvals	CSA EEV NEMA PREMIUM NEMA_PREMIUM UR CCSA US
Ambient Temperature	40 °C
Auxillary Box	No Auxillary Box
Auxillary Box Lead Termination	None
Base Indicator	Rigid
Bearing Grease Type	Polyrex EM (-20F +300F)
Blower	None
Constant Torque Speed Range	2.0
Current @ Voltage	7.100 A @ 460.0 V
Design Code	B
Drip Cover	No Drip Cover
Duty Rating	CONT
Efficiency @ 100% Load	89.5 %
Electrically Isolated Bearing	Not Electrically Isolated
Enclosure Modification	841
Feedback Device	NO FEEDBACK
Front Face Code	Standard

## Part detail

Revision	X
Type	AC
Mech. spec.	07M320
Base	
Status	PRD/A
Elec. spec.	07WGX815
Layout	07LYM320
Eff. date	08-04-2022
CD Diagram	CD0006
Poles	06
Leads	3#14
Proprietary	False
Created date	11-18-2013

Front Shaft Indicator	None
Heater Indicator	No Heater
High Voltage Full Load Amps	7.1 a
Insulation Class	F
Inverter Code	Inverter Ready
KVA Code	J
Lifting Lugs	Standard Lifting Lugs
Locked Bearing Indicator	Locked Bearing
Max Speed	1800 rpm
Motor Lead Exit	Ko Box
Motor Lead Quantity/Wire Size	3 @ 14 AWG
Motor Lead Termination	Ring Terminals
Motor Standards	NEMA
Motor Type	0748M
Mounting Arrangement	F1
Number of Poles	6
Overall Length	20.23 IN
Power Factor	73
Product Family	Chem Process S/P 32-8 IEEE 841
Pulley End Bearing Type	Ball
Pulley Face Code	C-Face
Pulley Shaft Indicator	Standard
Rodent Screen	None
Service Factor	1.15
Shaft Diameter	1.375 IN
Shaft Extension Location	Pulley End
Shaft Ground Indicator	No Shaft Grounding
Shaft Rotation	Reversible
Shaft Slinger Indicator	Shaft Slinger
Speed	1160 rpm
Speed Code	Single Speed
Starting Method	Direct on line
Thermal Device - Bearing	None
Thermal Device - Winding	None

<b>Vibration Sensor Indicator</b>	<b>No Vibration Sensor</b>
<b>Winding Thermal 1</b>	None
<b>Winding Thermal 2</b>	None
<b>XP Temp Code</b>	T3C

**Nameplate**

<b>NP4328</b>									
<b>CAT.NO.</b>	CECP83768T-4								
<b>SPEC.</b>	07M320X815G3								
<b>HP</b>	5 TE		<b>IP</b>	56					
<b>VOLTS</b>	460								
<b>AMPS</b>	7.1								
<b>R.P.M.</b>	1160								
<b>FRAME</b>	215TC		<b>HZ</b>	60		<b>PH</b>	3		
<b>SER.F.</b>	1.15	<b>CODE</b>	J	<b>DES.</b>	B	<b>CLASS</b>	F		
<b>RATING</b>	40C AMB-CONT								
<b>SN</b>									
<b>DE</b>	6307		<b>ODE</b>	6307					
<b>NEMA NOM. EFF.</b>	89.5		<b>P.F.</b>	73					
<b>GUAR. MIN. EFF.</b>	87.5	<b>CC</b>	010A						
<b>T. CODE</b>	T3C	<b>TEMP=</b>	160						

**NP3186**

<b>SPEC.</b>	07M320X815G3		
<b>ABMA DE BRG</b>	35BC03X30X		
<b>ABMA ODE BRG</b>	35BC03X30X		
<b>GREASE</b>	POLYREX EM		
<b>MOTOR WEIGHT</b>	226	<b>ROTOR BARS</b>	28
		<b>STATOR BARS</b>	36
<b>MAX. R.P.M.</b>	1800	<b>MAX. KVAR</b>	1.88
<b>INV.TYPE</b>	PWM		
<b>T=</b>	160		
<b>CHP</b>	60	<b>TO</b>	90
<b>CT</b>	2.0	<b>TO</b>	60
<b>VT</b>	-0	<b>TO</b>	60
<b>HTR-VOLTS</b>	N/A	<b>HTR-AMPS</b>	N/A
<b>HTR-WATTS</b>		<b>MAX. SPACE HEATER TEMP.</b>	N/A

**AC Induction Motor Performance Data**

Record # 92525

Typical performance - not guaranteed values

<b>Winding: 07WGX815-R027</b>		<b>Type: 0748M</b>		<b>Enclosure: TEFC</b>	
<b>Nameplate Data</b>			<b>460 V, 60 Hz: Single Voltage Motor</b>		
<b>Rated Output (HP)</b>	5	<b>Full Load Torque</b>	22.59 LB-FT		
<b>Volts</b>	460	<b>Start Configuration</b>	direct on line		
<b>Full Load Amps</b>	7.1	<b>Breakdown Torque</b>	75.8 LB-FT		
<b>R.P.M.</b>	1161	<b>Pull-up Torque</b>	44.2 LB-FT		
<b>Hz</b>	60	<b>Locked-rotor Torque</b>	49.8 LB-FT		
<b>NEMA Design Code</b>	B	<b>Starting Current</b>	46 A		
<b>Service Factor (S.F.)</b>	1.15	<b>No-load Current</b>	3.68 A		
<b>NEMA Nom. Eff.</b>	89.5	<b>Line-line Res. @ 25°C</b>	1.7842 Ω		
<b>Rating - Duty</b>	40C	<b>Temp. Rise @ Rated Load</b>	49°C		
<b>S.F. Amps</b>	AMB-CONT	<b>Temp. Rise @ S.F. Load</b>	60°C		
		<b>Locked-rotor Power Factor</b>	21.4		

**Load Characteristics 460 V, 60 Hz, 5 HP**

<b>% of Rated Load</b>	<b>25</b>	<b>50</b>	<b>75</b>	<b>100</b>	<b>125</b>	<b>150</b>	<b>S.F.</b>
<b>Power Factor</b>	34	55	66	73	76	78	75
<b>Efficiency</b>	85.2	89.8	90.4	89.5	88.5	86.8	88.9
<b>Speed</b>	1189.6	1180.9	1170.9	1160.6	1148.4	1134.8	1153
<b>Line amperes</b>	3.99	4.78	5.85	7.16	8.65	10.4	8.05

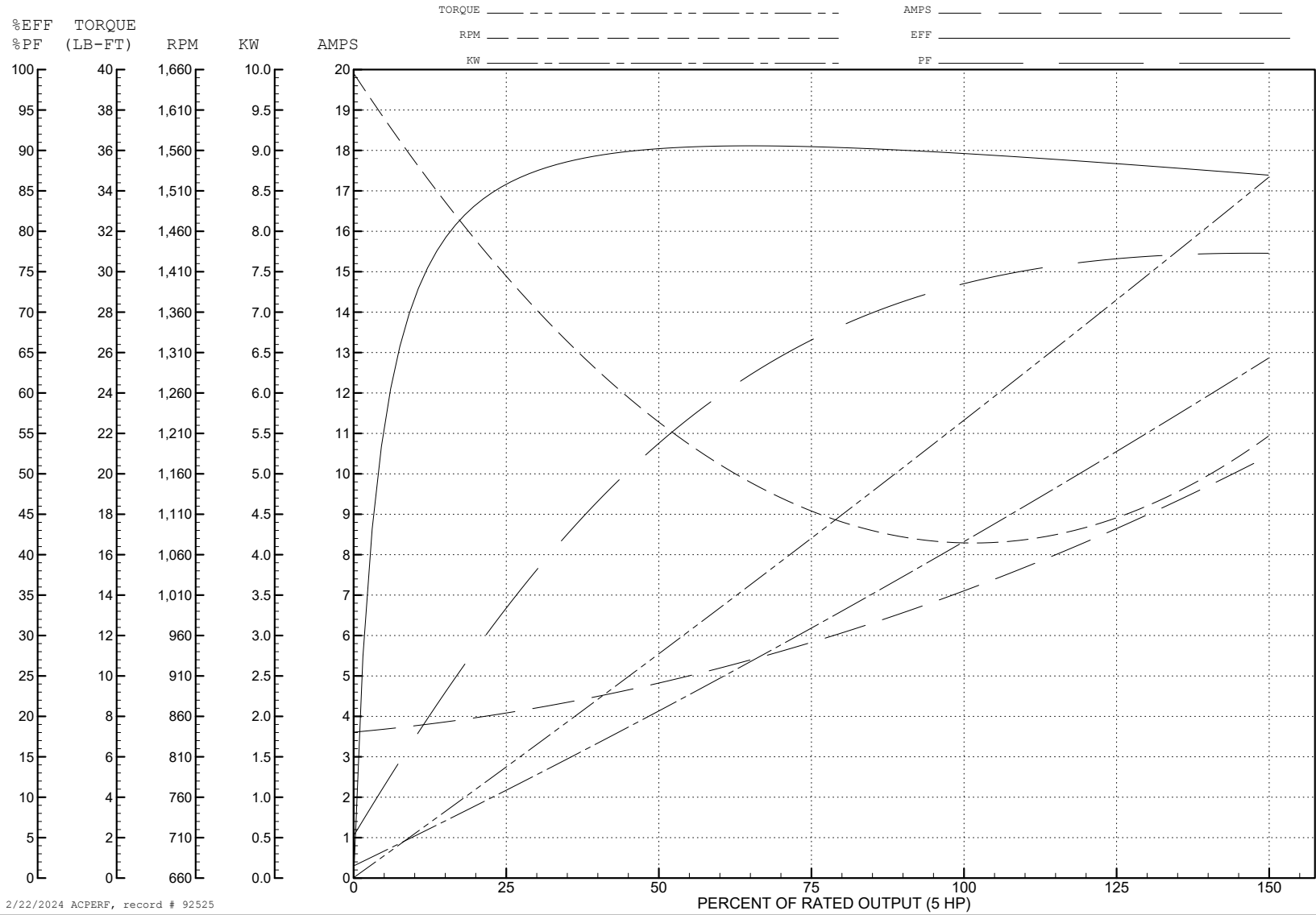
ABB Motors and Mechanical Inc.

WINDING # 07WGX815

Typical performance - not guaranteed values.

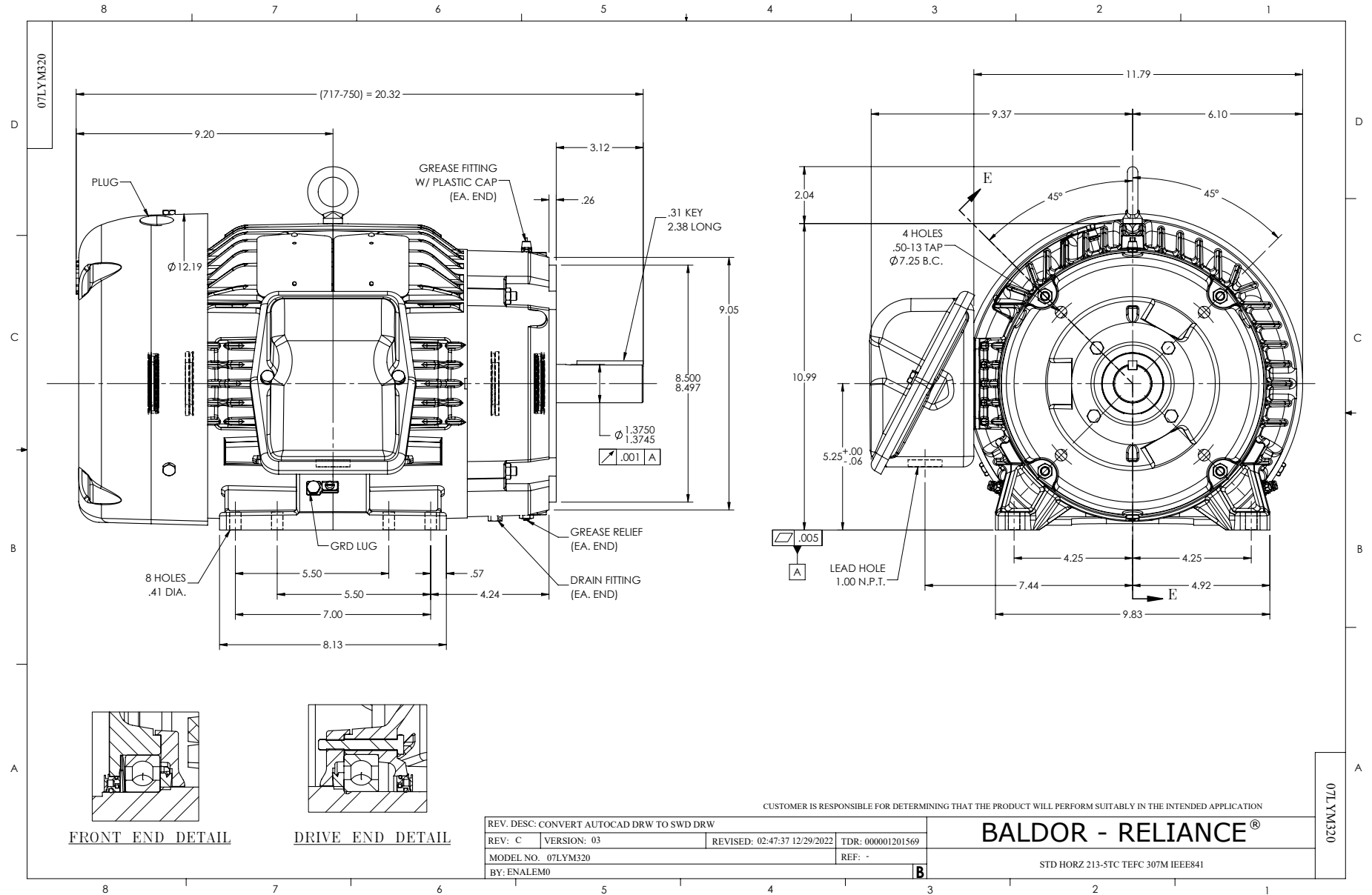
5 HP 3 PH 60 HZ 1161 RPM 460 V 0748M

TORQUES (LB-FT): PO=75.8 PU=44.2 LR=49.8 LRA=46

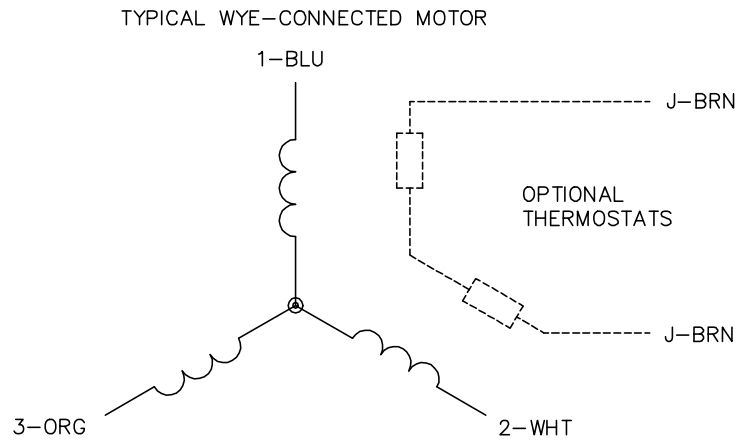


2/22/2024 ACPERF, record # 92525





CD0006



NOTES:

1. THREE LEAD MOTOR MAY BE EITHER WYE CONNECTED OR DELTA CONNECTED.
2. INTERCHANGE ANY TWO LINE LEADS TO REVERSE ROTATION.
3. OPTIONAL THERMOSTATS ARE PROVIDED WHEN SPECIFIED.
4. ACTUAL NUMBER OF INTERNAL PARALLEL CIRCUITS MAY VARY.
5. LEAD COLORS ARE OPTIONAL. LEADS MUST BE NUMBERED AS SHOWN.

CD0006

REV. DESC: ADD CLASS CONN00000007		
REV. LTR: E	VERSION: 01	TDR: 000001099922
FILE: \AAA\00005\141	REVISED: 10:24:49 02/19/2019	BY: ENBRIRO
MTL: -		© □

**BALDOR - RELIANCE®**

3PH, SV, 3 LEADS, WYE OR DELTA CONNECTED

SH 1 of 1