

# ABB BALDOR RELIANCE III

---

## Customer information packet

CECP83587T-4

2HP, 1755RPM, 3PH, 60HZ, 145TC, 0526M, TEFC, F1

Class - CLI GP A,B,C,D

Division - Division II

**Specifications**

|                                       |  |
|---------------------------------------|--|
| <b>Enclosure</b>                      | TEFC   |
| <b>Frame</b>                          | 145TC  |
| <b>Frame Material</b>                 | Iron   |
| <b>Frequency</b>                      | 60.00 Hz   |
| <b>Haz Area Class and Group</b>       | CLI GP A,B,C,D   |
| <b>Haz Area Division</b>              | Division II  |
| <b>Motor Letter Type</b>              | Three Phase  |
| <b>Output @ Frequency</b>             | 2.000 HP @ 60 HZ   |
| <b>Phase</b>                          | 3  |
| <b>Synchronous Speed @ Frequency</b>  | 1800 RPM @ 60 HZ   |
| <b>Voltage @ Frequency</b>            | 460.0 V @ 60 HZ  |
| <b>Agency Approvals</b>               | CCSA US<br>UR<br>NEMA_PREMIUM<br>NEMA PREMIUM<br>CSA EEV |
| <b>Ambient Temperature</b>            | 40 °C  |
| <b>Auxiliary Box</b>                  | NO AUXILLARY BOX   |
| <b>Auxiliary Box Lead Termination</b> | None   |
| <b>Base Indicator</b>                 | Rigid  |
| <b>Bearing Grease Type</b>            | Polyrex EM (-20F +300F)                                  |
| <b>Blower</b>                         | None   |
| <b>Current @ Voltage</b>              | 2.800 A @ 460.0 V  |
| <b>Design Code</b>                    | B  |
| <b>Drip Cover</b>                     | No Drip Cover  |
| <b>Duty Rating</b>                    | CONT   |
| <b>Efficiency @ 100% Load</b>         | 86.5 %   |
| <b>Electrically Isolated Bearing</b>  | Not Electrically Isolated                                |
| <b>Feedback Device</b>                | NO FEEDBACK  |
| <b>Front Shaft Indicator</b>          | None   |
| <b>Heater Indicator</b>               | No Heater  |
| <b>High Voltage Full Load Amps</b>    | 2.8 a  |

**Part Detail**

|                     |            |
|---------------------|------------|
| <b>Revision</b>     | E          |
| <b>Type</b>         | AC         |
| <b>Mech. spec.</b>  | 05E943     |
| <b>Base</b>         |            |
| <b>Status</b>       | PRD/A      |
| <b>Elec. spec.</b>  | 05WGX549   |
| <b>Layout</b>       | 05LYE943   |
| <b>Eff. date</b>    | 05-12-2025 |
| <b>CD Diagram</b>   | CD0006     |
| <b>Poles</b>        | 04         |
| <b>Leads</b>        | 3#18 Y     |
| <b>Proprietary</b>  | False      |
| <b>Created date</b> | 03-11-2022 |

|                                      |                                |
|--------------------------------------|--------------------------------|
| <b>Insulation Class</b>              | F                              |
| <b>Inverter Code</b>                 | Inverter Ready                 |
| <b>KVA Code</b>                      | L                              |
| <b>Lifting Lugs</b>                  | Standard Lifting Lugs          |
| <b>Locked Bearing Indicator</b>      | Locked Bearing                 |
| <b>Motor Lead Quantity/Wire Size</b> | 3 @ 18 AWG                     |
| <b>Motor Lead Termination</b>        | Flying Leads                   |
| <b>Motor Standards</b>               | NEMA                           |
| <b>Motor Type</b>                    | 0526M                          |
| <b>Mounting Arrangement</b>          | F1                             |
| <b>Number of Poles</b>               | 4                              |
| <b>Overall Length</b>                | 13.38 IN                       |
| <b>Power Factor</b>                  | 74                             |
| <b>Product Family</b>                | Chem Process S/P 32-8 IEEE 841 |
| <b>Pulley End Bearing Type</b>       | Ball                           |
| <b>Pulley Face Code</b>              | Standard                       |
| <b>Pulley Shaft Indicator</b>        | Standard                       |
| <b>Rodent Screen</b>                 | None                           |
| <b>Service Factor</b>                | 1.15                           |
| <b>Shaft Diameter</b>                | 0.875 IN                       |
| <b>Shaft Ground Indicator</b>        | No Shaft Grounding             |
| <b>Shaft Rotation</b>                | Reversible                     |
| <b>Shaft Slinger Indicator</b>       | Shaft Slinger                  |
| <b>Speed</b>                         | 1755 rpm                       |
| <b>Speed Code</b>                    | Single Speed                   |
| <b>Starting Method</b>               | Direct on line                 |
| <b>Thermal Device - Bearing</b>      | None                           |
| <b>Thermal Device - Winding</b>      | None                           |
| <b>Vibration Sensor Indicator</b>    | No Vibration Sensor            |
| <b>Winding Thermal 1</b>             | None                           |
| <b>Winding Thermal 2</b>             | None                           |

**Nameplate**

| <b>NP4328</b>          |              |              |             |             |    |              |   |  |  |
|------------------------|--------------|--------------|-------------|-------------|----|--------------|---|--|--|
| <b>CAT.NO.</b>         | CECP83587T-4 |              |             |             |    |              |   |  |  |
| <b>SPEC.</b>           | 05E943X549G1 |              |             |             |    |              |   |  |  |
| <b>HP</b>              | 2 TE         |              |             | <b>IP</b>   | 56 |              |   |  |  |
| <b>VOLTS</b>           | 460          |              |             |             |    |              |   |  |  |
| <b>AMPS</b>            | 2.8          |              |             |             |    |              |   |  |  |
| <b>R.P.M.</b>          | 1755         |              |             |             |    |              |   |  |  |
| <b>FRAME</b>           | 145TC        |              | <b>HZ</b>   | 60          |    | <b>PH</b>    | 3 |  |  |
| <b>SER.F.</b>          | 1.15         | <b>CODE</b>  | L           | <b>DES.</b> | B  | <b>CLASS</b> | F |  |  |
| <b>RATING</b>          | 40C AMB-CONT |              |             |             |    |              |   |  |  |
| <b>SN</b>              |              |              |             |             |    |              |   |  |  |
| <b>DE</b>              | 6205         |              | <b>ODE</b>  | 6205        |    |              |   |  |  |
| <b>NEMA NOM. EFF.</b>  | 86.5         |              | <b>P.F.</b> | 74          |    |              |   |  |  |
| <b>GUAR. MIN. EFF.</b> | 84           | <b>CC</b>    | 010A        |             |    |              |   |  |  |
| <b>T. CODE</b>         | T4           | <b>TEMP=</b> | 135         |             |    |              |   |  |  |

**NP3186**

|                     |              |                                |      |
|---------------------|--------------|--------------------------------|------|
| <b>SPEC.</b>        | 05E943X549G1 |                                |      |
| <b>ABMA DE BRG</b>  | 25BC02X30X   |                                |      |
| <b>ABMA ODE BRG</b> | 25BC02X30X   |                                |      |
| <b>GREASE</b>       | POLYREX EM   |                                |      |
| <b>MOTOR WEIGHT</b> | 76           | <b>ROTOR BARS</b>              | 27   |
|                     |              | <b>STATOR BARS</b>             | 36   |
| <b>MAX. R.P.M.</b>  | 2700         | <b>MAX. KVAR</b>               | 0.64 |
|                     | SFA 3.2      |                                |      |
| <b>INV.TYPE</b>     | PWM          |                                |      |
| <b>T=</b>           | 135          |                                |      |
| <b>CHP</b>          | 60           | <b>TO</b>                      | 90   |
| <b>CT</b>           | 1.5          | <b>TO</b>                      | 60   |
| <b>VT</b>           | -0           | <b>TO</b>                      | 60   |
| <b>HTR-VOLTS</b>    |              | <b>HTR-AMPS</b>                |      |
| <b>HTR-WATTS</b>    |              | <b>MAX. SPACE HEATER TEMP.</b> |      |

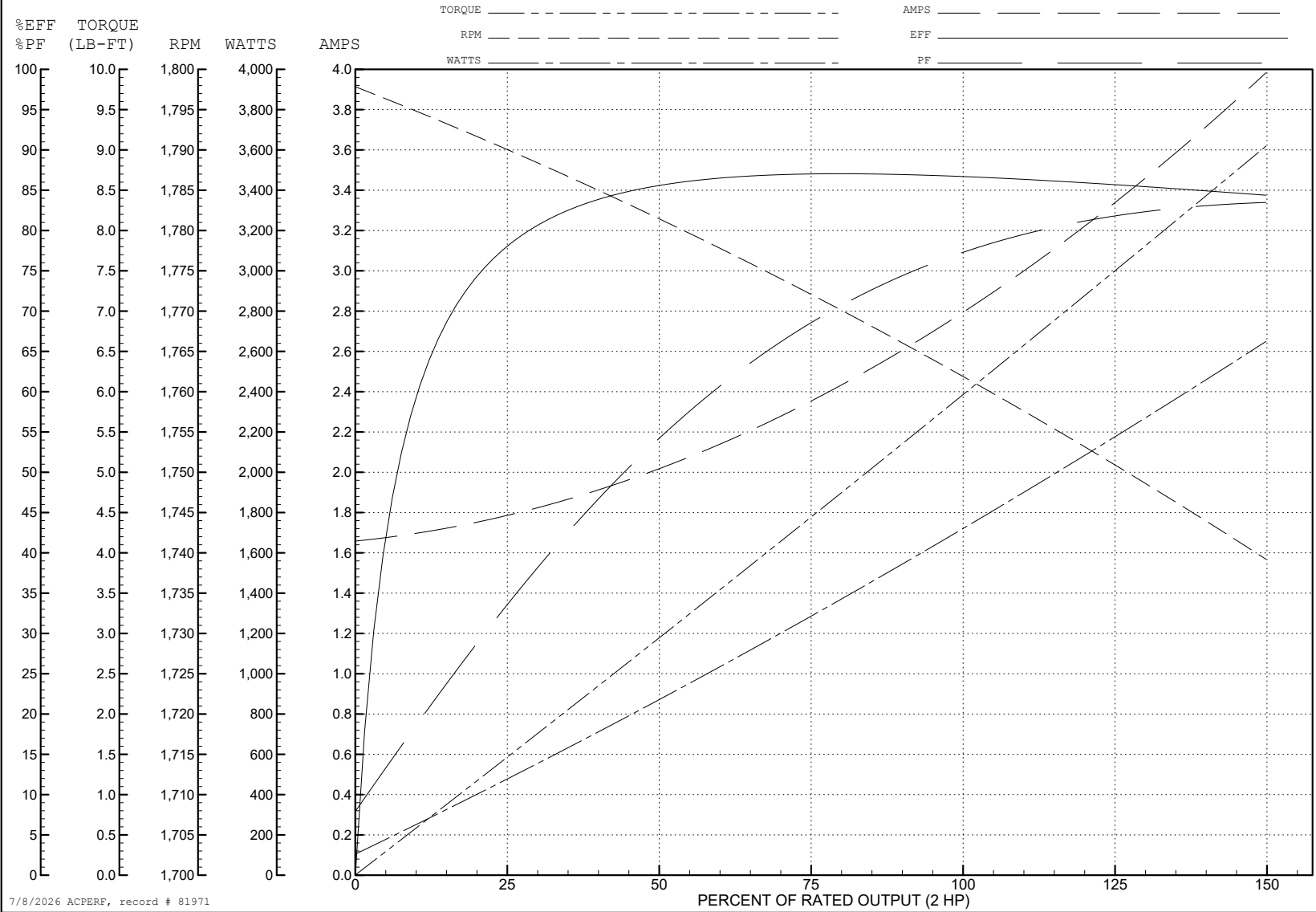
ABB Motors and Mechanical Inc.

WINDING # 05WGx549

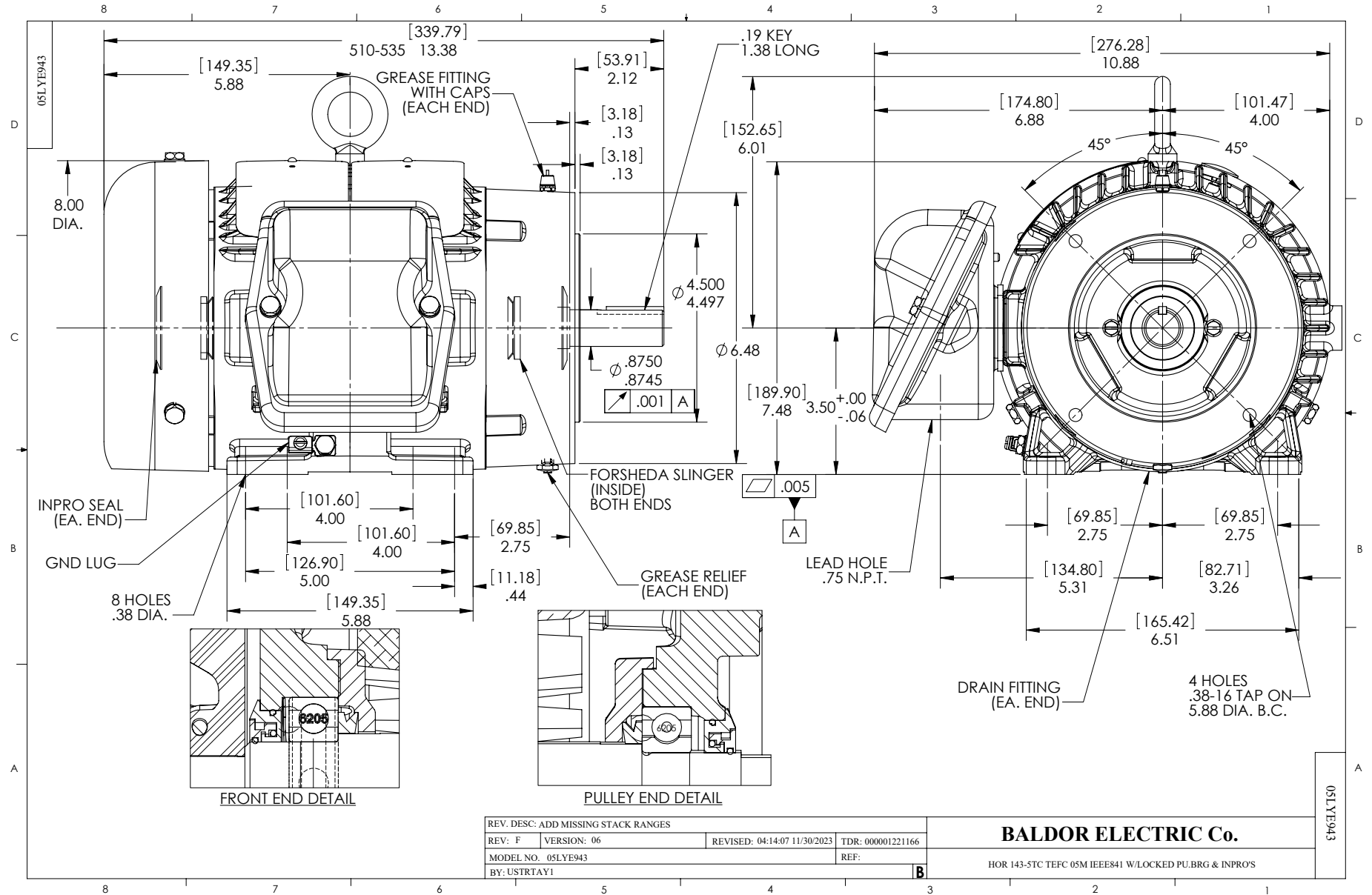
2 HP 3 PH 60 HZ 1755 RPM 460 V 0526M

Typical performance - not guaranteed values.

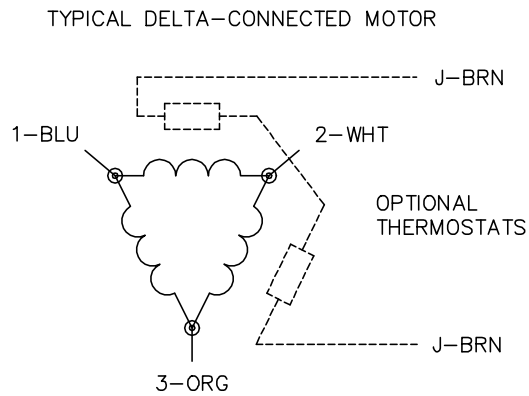
TORQUES (LB-FT): PO=23.5 PU=11.5 LR=15.6 LRA=22.7



7/8/2026 ACPERF, record # 81971



CD0006



NOTES:

1. THREE LEAD MOTOR MAY BE EITHER WYE CONNECTED OR DELTA CONNECTED.
2. INTERCHANGE ANY TWO LINE LEADS TO REVERSE ROTATION.
3. OPTIONAL THERMOSTATS ARE PROVIDED WHEN SPECIFIED.
4. ACTUAL NUMBER OF INTERNAL PARALLEL CIRCUITS MAY VARY.
5. LEAD COLORS ARE OPTIONAL. LEADS MUST BE NUMBERED AS SHOWN.

CD0006

|                                   |                              |                   |
|-----------------------------------|------------------------------|-------------------|
| REV. DESC: ADD CLASS CONN00000007 |                              |                   |
| REV. LTR: E                       | VERSION: 01                  | TDR: 000001099922 |
| FILE: \AAA\00005\141              | REVISED: 10:24:49 02/19/2019 | BY: ENBRIRO       |
| MTL: -                            |                              | © □               |

**BALDOR - RELIANCE®**

3PH, SV, 3 LEADS, WYE OR DELTA CONNECTED

SH 1 of 1