

ABB BALDOR RELIANCE III

Customer information packet CECP4316T

75HP, 1780RPM, 3PH, 60HZ, 365TC, A36070M, TEFC

Class - None

Division - Division II

Specifications

Enclosure	TEFC
Frame	365TC
Frame Material	Iron
Frequency	60.00 Hz
Haz Area Class and Group	None
Haz Area Division	Division II
Motor Letter Type	Three Phase
Output @ Frequency	75.000 HP @ 60 HZ
Phase	3
Synchronous Speed @ Frequency	1800 RPM @ 60 HZ
Voltage @ Frequency	230.0 V @ 60 HZ 460.0 V @ 60 HZ
Agency Approvals	CCSAUSEEV CURUSEEV NEMA PREMIUM NEMA_PREMIUM UR
Ambient Temperature	40 °C
Auxiliary Box	NO AUXILLARY BOX
Base Indicator	Rigid
Bearing Grease Type	Polyrex EM (-20F +300F)
Constant Torque Speed Range	15-60
Current @ Voltage	86.000 A @ 460.0 V 188.000 A @ 208.0 V 172.000 A @ 230.0 V
Design Code	B
Drip Cover	No Drip Cover
Duty Rating	CONT
Efficiency @ 100% Load	95.4 %
Feedback Device	NO FEEDBACK
Haz Area Temp Code	T3
Heater Indicator	No Heater

Part Detail

Revision	H
Type	AC
Mech. spec.	
Base	
Status	PRD/A
Elec. spec.	A36WG4076
Layout	611740-503-SH1
Eff. date	02-13-2025
CD Diagram	416820-002
Poles	04
Leads	3#4,6#6
Proprietary	False
Created date	05-15-2020

High Voltage Full Load Amps	86.0 a
Insulation Class	F
Inverter Code	Inverter Ready
KVA Code	G
Lifting Lugs	Standard Lifting Lugs
Motor Lead Quantity/Wire Size	3 @ 4 AWG
Motor Standards	NEMA
Motor Type	A36070M
Mounting Arrangement	F1
Number of Poles	4
Overall Length	33.44 IN
Power Factor	86
Product Family	General Industrial
Pulley End Bearing Type	Ball
Pulley Face Code	C-Face
Service Factor	1.15
Shaft Diameter	2.375 IN
Shaft Ground Indicator	No Shaft Grounding
Shaft Rotation	Reversible
Shaft Slinger Indicator	Shaft Slinger
Speed	1780 rpm
Speed Code	Single Speed
Starting Method	Direct on line
Thermal Device - Bearing	None
Thermal Device - Winding	None

Nameplate

NP4033LUA

CAT #	CECP4316T		SER			CC	010A					
SPEC	A36-7700-4076		RATING	40C AMB-CONT								
HZ	VOLTS		AMPS		RPM	HP	CODE	SF	DES	PF	NEMA NOM. EFF	
60	230/460		172/86		1780	75	G	1.15	B	86 %	95.4 %	%
PH	3	CL	F	MAX RPM	4200	MAX CORR KVAR	15.8					
BRG	DE	6313	ODE	6313	ENCL	TEFC	FR	365TC	IP	55		
GREASE	POLYREX EM					MTR WT		LBS				
CL I DIV 2 GRPS A,B,C,D				CL I ZONE 2 GRPS				IIA,IIB,IIC		TEMP T	200	C
INV READY	CT	15-60	HZ	4:1	VT	3-60	HZ	20:1	CHP	60-90	HZ	1.5:1
INV TEMP CL	200	C	USABLE AT	50HZ 60HP 190/380V 168/84A						SF1.0		

AC induction motor performance data

Record #71910 - Typical performance - not guaranteed values

Winding	A36WG4076
Type	A3670M
Enclosure	TEFC

Nameplate data

Rated Output			75
Volts			230/460
Full Load Amps			172/86
R.P.M.			1780
Hz	60	Phase	3
KVA Code			G
S.F.			1.15
NEMA Nom. Eff.	95.4	Power Factor	86
Duty			CONT
S.F. Amps			

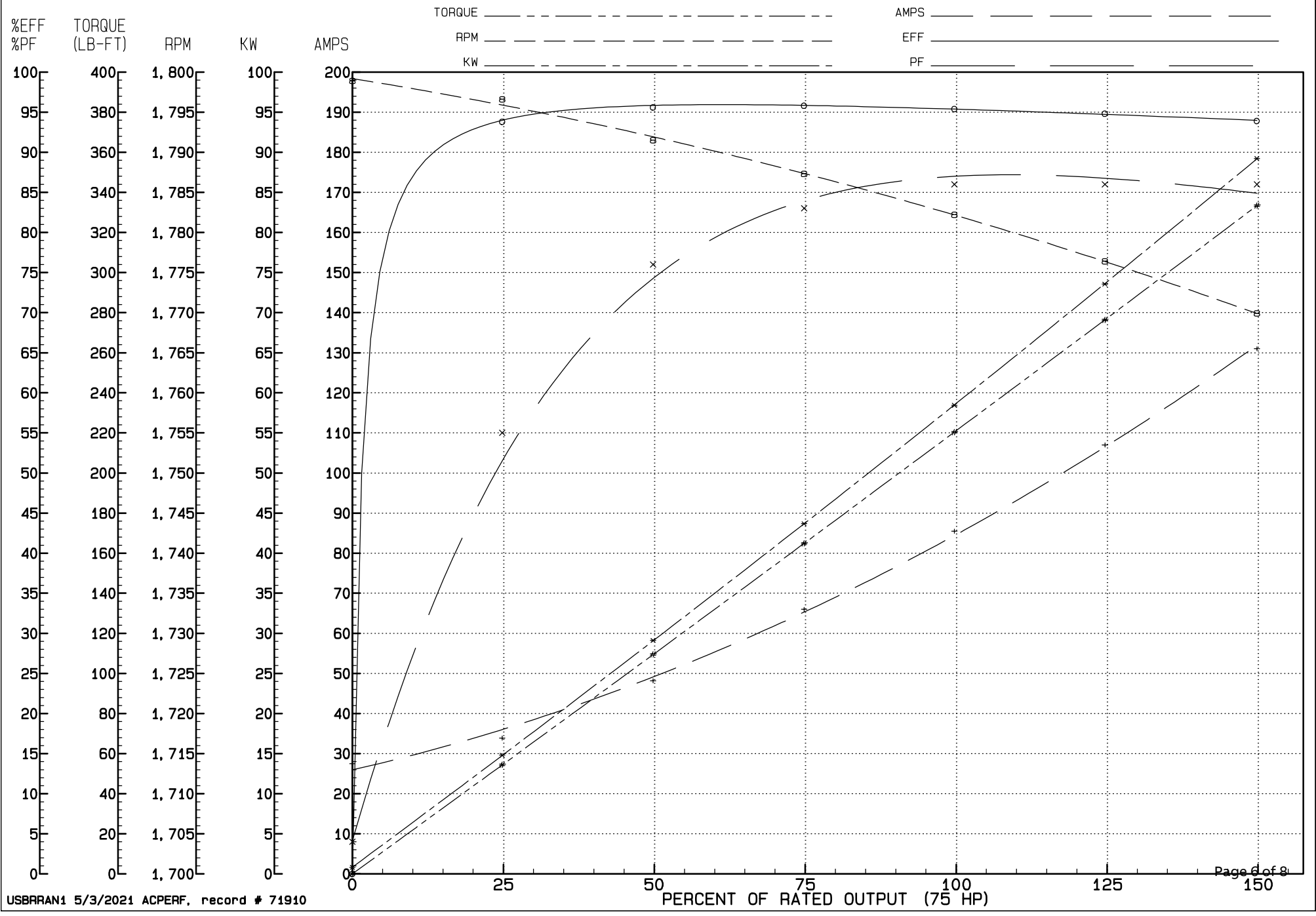
460 V, 60 Hz:

High Voltage Connection

Full Load Torque	220.4 LB-FT
Start Configuration	direct on line
Breakdown Torque	618 LB-FT
Pull-up Torque	341 LB-FT
Locked-rotor Torque	434 LB-FT
Starting Current	545 A
No-load Current	27.5
Line-line Res. @ 25°C	0.081965 Ω
Temp. Rise @ Rated Load	60°C
Temp. Rise @ S.F. Load	75°C
Locked-rotor Power Factor	31.8
Rotor inertia	0

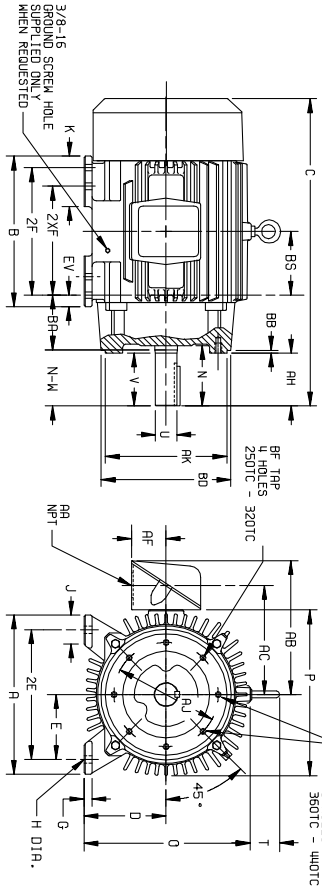
Load Characteristics 460 V, 60 Hz, 75 HP

% of Rated Load	NL	25	50	75	100	125	150	SF
Power Factor	4	55	76	83	86	86	86	86
Efficiency	0	93.8	95.6	95.8	95.4	94.8	93.9	95
Speed	1798.9	1796.6	1791.5	1787.3	1782.2	1776.4	1769.9	1779
Line amperes	27.5	33.9	48.2	66	85.5	107	131	98.4



DUTY MASTER ALTERNATING CURRENT MOTORS

ENCLOSURE: TOTALLY ENCLOSED
SQUIREL-CAGE INDUCTION
COOLING: FAN COOLED
FRAMES 250TC THRU 440TC
CAST IRON CONSTRUCTION



DIMENSIONS ARE IN INCHES; SEE SHEET 2 FOR DIMENSIONS IN MILLIMETERS

FRAME	A	D(2)	E	G	H	J	K	EV	O	P	T	CAST IRON TERMINAL BOX				MIN. BDEPTH		AU		AK	
254TC-256TC	12.50	6.25	5.00	.75	1.56	2.50	---	1.00	13.25	13.25	2.44	1-1/4	10.81	8.81	2.50	4.75	9.00	1/2-13	.75	1.25	8.50
256TC	25.06	5.00	12.00	---	8.25	4.06	3.75	4.00	4.06	3.75	4.00	1.625	3.75	3.75	2.88	3.45	---	---	---	---	
264TC	27.44	5.50	13.00	---	9.50	5.00	4.38	4.62	4.62	4.38	4.62	1.875	4.38	5.00	3.25	4.85	---	---	---	---	
264TSC	26.06	5.50	13.00	---	9.50	3.62	3.00	3.25	1.625	3.00	3.75	1.625	3.00	3.75	1.68	4.85	---	---	---	---	
266TC	27.44	5.50	13.00	---	11.00	5.00	4.38	4.62	4.62	4.38	5.00	3.75	5.00	3.25	5.00	5.00	---	---	---	---	
266TSC	26.06	5.50	13.00	---	11.00	3.62	3.00	3.25	1.625	3.00	3.75	1.625	3.00	3.75	1.68	5.00	---	---	---	---	
324TC	30.44	6.00	14.75	---	10.50	5.62	5.00	5.25	2.125	5.00	5.00	2.00	5.00	3.88	6.05	---	---	---	---	---	
324TSC	28.94	6.00	14.75	---	10.50	4.12	3.50	3.75	1.875	3.50	3.50	2.00	3.88	6.45	6.45	---	---	---	---	---	
326TC	30.44	6.00	14.75	---	12.00	5.62	5.00	5.25	2.125	5.00	5.00	2.00	3.88	6.45	6.45	---	---	---	---	---	
326TSC	28.94	6.00	14.75	---	12.00	4.12	3.50	3.75	1.875	3.50	3.50	2.00	3.88	6.45	6.45	---	---	---	---	---	
364TC	33.44	6.12	15.00	---	11.25	6.25	5.62	5.88	2.375	5.62	6.25	2.00	8.74	8.74	8.74	---	---	---	---	---	
364TSC	31.31	6.12	15.00	---	11.25	4.12	3.50	3.75	1.875	3.50	5.00	2.00	8.74	8.74	8.74	---	---	---	---	---	
369TC	33.44	6.12	15.00	---	12.25	6.25	5.62	5.88	2.375	5.62	6.25	2.00	8.99	8.99	8.99	---	---	---	---	---	
369TSC	31.31	6.12	15.00	---	12.25	4.12	3.50	3.75	1.875	3.50	5.00	2.00	8.99	8.99	8.99	---	---	---	---	---	
404TC	38.31	6.88	16.00	---	12.25	7.50	7.00	7.25	2.875	7.00	7.50	5.62	12.65	12.65	12.65	---	---	---	---	---	
404TSC	35.31	6.88	16.00	---	12.25	4.50	4.00	4.25	2.125	4.00	5.00	2.75	12.65	12.65	12.65	---	---	---	---	---	
409TC	38.31	6.88	16.00	---	13.75	7.50	7.00	7.25	2.875	7.00	7.50	5.62	13.05	13.05	13.05	---	---	---	---	---	
409TSC	35.31	6.88	16.00	---	13.75	4.50	4.00	4.25	2.125	4.00	5.00	2.75	12.96	12.96	12.96	---	---	---	---	---	
444TC	44.62	8.25	19.00	---	14.50	8.94	8.25	8.50	3.375	8.25	8.75	6.88	17.38	17.38	17.38	---	---	---	---	---	
444TSC	40.88	8.25	19.00	---	14.50	5.19	4.50	4.75	2.375	4.50	6.25	3.00	17.22	17.22	17.22	---	---	---	---	---	
445TC	44.62	8.25	19.00	---	16.50	8.94	8.25	8.50	3.375	8.25	8.75	6.88	19.28	19.28	19.28	---	---	---	---	---	
445TSC	40.88	8.25	19.00	---	16.50	5.19	4.50	4.75	2.375	4.50	6.25	3.00	19.12	19.12	19.12	---	---	---	---	---	

- SPECIAL DIMENSIONS APPLYING TO THIS ORDER ON THIS LINE.
 - "D" VARIES [250TC +.00, -.03] [360TC +.00, -.06]
 - "U" VARIES [HP TO 1.625 DIA. +.000, -.001] [1.625 AND LARGER +.000, -.001]
 - ALL FRAMES HAVE EIGHT MOUNTING HOLES FOR DUAL MOUNTING.
 - MOTOR WEIGHTS MAY VARY BY 1% DEPENDING UPON RATING.
 - "AK" VARIES [250TC +.000, -.003] [320TC +.000, -.003]
 - "N-W" VARIES +.00, -.25.
- CONDUIT BOX LOCATED ON OPPOSITE SIDE WHEN F-2W-1, W-4W-5W-7, OR C-1 MOUNTING IS SPECIFIED.
IF MOUNTING CLEARANCE DETAILS ARE REQUIRED, CONSULT FACTORY.
MAXIMUM PERMISSIBLE SHAFT RUNOUT WHEN MEASURED AT END OF STD. SHAFT EXTENSION IS .002 T.I.R. UP TO AND INCLUDING 1.625 DIA. AND .003 T.I.R. 1.625 DIA. TO 5 INCH DIA.
FACE RUNOUT AND [250TC - 280TC INCL. .004 MAX. T.I.R. ECCENTRICITY] [320TC - 440TC INCL. .007 MAX. T.I.R.]

FRAME _____ TYPE _____ CERTIFIED FOR _____ RPM _____ PH _____ HZ _____ VOLTS _____
 ORDER _____ ITEM _____ HP _____ APPROVED BY _____ DATE _____
 SALES ORDER _____

IHS-305-047.119

CUSTOMER IS RESPONSIBLE FOR DETERMINING THAT MOTOR PERFORMANCE IS SUITABLE IN THE APPLICATION.

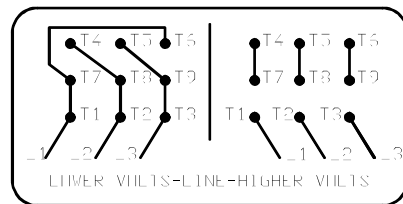
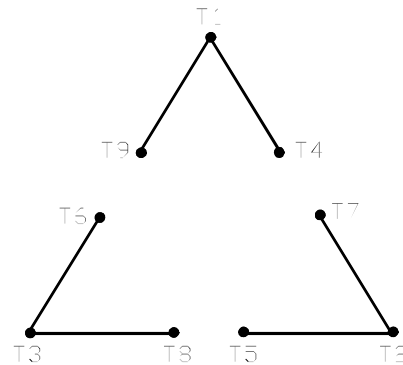
REV. DESC: REMOVING TITLEBLOCK	VERSION: 01	TDR: 00000448517
REV. LTR: A	REVISED: 14:21:04 11/07/2007	BY: CONBPM
FILE: \RAG\00004\530		
MTL: -		

BALDOR • DODGE • RELIANCE

DIM SHT 250TC-440TC TEFC FT MTG C FACE T & TS SGL EXT XT

416820-002

A-C MOTOR
CONNECTION DIAGRAM
STANDARD 9 LEAD DELTA-CONNECTED



(N.P. 1575-B)

416820-002

REV. DESC: FONT CHANGE FOR PDF SEARCHABLE		
REV. LTR: A	VERSION: 01	TDR: 000001009382
FILE: \MGA\00000\661	REVISED: 02:46:19 02/13/2020	BY: MGHMTT
MTL: -	© □	

BALDOR - RELIANCE®

CONN DIAG - STANDARD 9 LEAD, DELTA-CONNECTED

SH 1 of 1