

ABB BALDOR RELIANCE III

Customer information packet CECP4312T

50HP, 1185RPM, 3PH, 60HZ, 365TC, A36062M, TEFC

Class - CLI GP A,B,C,D

Division - Division II

Specifications

Enclosure	TEFC
Frame	365TC
Frame Material	Iron
Frequency	60.00 Hz
Haz Area Class and Group	CLI GP A,B,C,D
Haz Area Division	Division II
Motor Letter Type	Three Phase
Output @ Frequency	50.000 HP @ 60 HZ
Phase	3
Synchronous Speed @ Frequency	1200 RPM @ 60 HZ
Voltage @ Frequency	230.0 V @ 60 HZ 460.0 V @ 60 HZ
Agency Approvals	CCSAUSEEV NEMA PREMIUM NEMA_PREMIUM UR
Ambient Temperature	40 °C
Auxiliary Box	NO AUXILLARY BOX
Base Indicator	Rigid
Bearing Grease Type	Polyrex EM (-20F +300F)
Constant Torque Speed Range	6-60
Current @ Voltage	61.700 A @ 460.0 V 135.000 A @ 208.0 V 123.000 A @ 230.0 V
Design Code	B
Drip Cover	No Drip Cover
Duty Rating	CONT
Efficiency @ 100% Load	94.1 %
Feedback Device	NO FEEDBACK
Haz Area Temp Code	T3A
Heater Indicator	No Heater
High Voltage Full Load Amps	61.7 a

Part Detail

Revision	P
Type	AC
Mech. spec.	
Base	
Status	PRD/A
Elec. spec.	A36WG0466
Layout	617428-136
Eff. date	08-26-2024
CD Diagram	416820-002
Poles	06
Leads	3#4,6#6
Proprietary	False
Created date	11-27-2013

Insulation Class	F
Inverter Code	Inverter Duty
KVA Code	F
Lifting Lugs	Standard Lifting Lugs
Max Speed	1800 rpm
Motor Lead Quantity/Wire Size	3 @ 4 AWG
Motor Standards	NEMA
Motor Type	A36062M
Mounting Arrangement	F1
Number of Poles	6
Overall Length	33.44 IN
Power Factor	81
Product Family	General Industrial
Pulley End Bearing Type	Ball
Pulley Face Code	C-Face
Service Factor	1.15
Shaft Diameter	2.375 IN
Shaft Ground Indicator	No Shaft Grounding
Shaft Rotation	Reversible
Shaft Slinger Indicator	Shaft Slinger
Speed	1185 rpm
Speed Code	Single Speed
Starting Method	Direct on line
Thermal Device - Bearing	None
Thermal Device - Winding	None

Nameplate

NP4033LUA

CAT #	CECP4312T		SER			CC	010A					
SPEC	A36-4049-0466		RATING	40C AMB-CONT								
HZ	VOLTS		AMPS		RPM	HP	CODE	SF	DES	PF	NEMA NOM. EFF	
60	230/460		123/61.7		1185	50	F	1.15	B	81 %	94.1 %	%
PH	3	CL	F	MAX RPM	1800	MAX CORR KVAR	14					
BRG	DE	6313	ODE	6313	ENCL	TEFC	FR	365TC	IP	55		
GREASE	POLYREX EM				MTR WT	893	LBS					
CL I DIV 2 GRPS A,B,C,D				CL I ZONE 2 GRPS				IIA,IIB,IIC		TEMP T	200	C
INV READY	CT	15-60	HZ	4:1	VT	3-60	HZ	20:1	CHP	60-90	HZ	1.5:1
INV TEMP CL	200	C	USABLE AT	50HZ 40HP 190/380V 120/60A						SF1.0		

CUSTOMER INFORMATION PACKET		CECP4312T - 50HP, 1185RPM, 3PH, 60HZ, 365TC, A36062M, TEFC				
FRAME	HP	TYPE	PHASE/ HERTZ	RPM	VOLTS	
365T	50	P	3/60	1185	230/460	

AMPS	DUTY	AMB °C/ INSUL	S.F.	NEMA DESIGN	CODE LETTER	ENCLOSURE
123/61.7	CONT	40/F	1.15	B	F	TEFC

E/S	ROTOR	TEST S.O.	TEST DATE	STATOR RES. @25 °C OHMS (BETWEEN LINES)	
892104	418141-74EE	---	---	.0325/.130	

PERFORMANCE


LOAD	HP	AMPERES	RPM	% POWER FACTOR	% EFFICIENCY
NO LOAD	0	21.3	1200	5.08	0
1/4	12.5	26.2	1197	49.4	90.8
2/4	25.0	35.6	1193	70.0	93.9
3/4	37.5	47.8	1190	77.8	94.4
4/4	50.0	61.7	1186	80.6	94.2
5/4	62.5	76.7	1182	81.5	93.6

SPEED TORQUE

	RPM	TORQUE % FULL LOAD	TORQUE LB.-FT.	AMPERES
LOCKED ROTOR	0	154	340	345
PULL UP	650	133	295	305
BREAKDOWN	1133	230	510	191
FULL LOAD	1186	100	221	61.7

AMPERES SHOWN FOR 460 VOLT CONNECTION. IF OTHER CONNECTIONS ARE AVAILABLE, THE AMPERES WILL VARY INVERSELY WITH THE RATED VOLTAGE.

TYPICAL DATA
 XE MOTOR-NEMA NOM. EFF. 94.1 PCT.
 GUARANTEED MIN. EFF. 93.0 PCT.

	DRAWN BY: <u>W. L. SMITH</u>	AC MOTOR PERFORMANCE DATA	A36WG0466-R003
	CHECKED BY: <u>J.J.HARRISON</u> APPROVED BY: <u>W. L. SMITH</u> DATE: <u>12/07/05</u>		

FRAME 365T

RPM 1185

S.F. 1.15

ROTOR 41814174EE

HP 50

VOLTS 230/460

NEMA DESIGN B

TEST S.O. TYPICAL DATA

TYPE P

AMPS 123/61.7

CODE LETTER F

TEST DATE ---

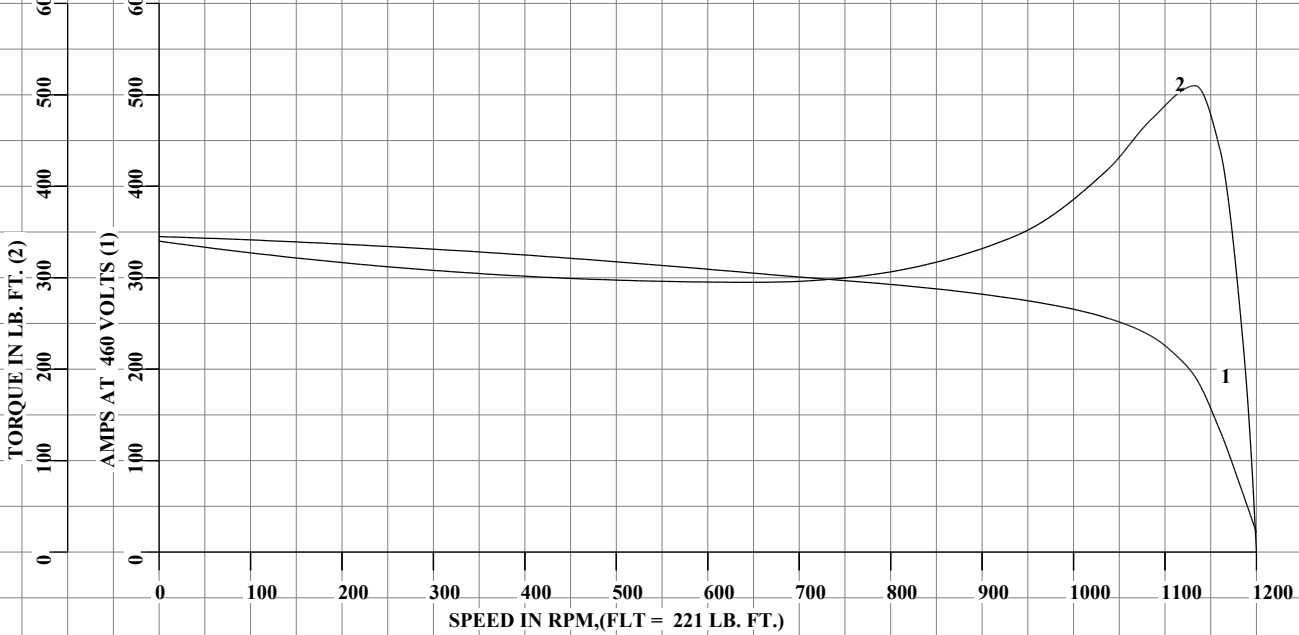
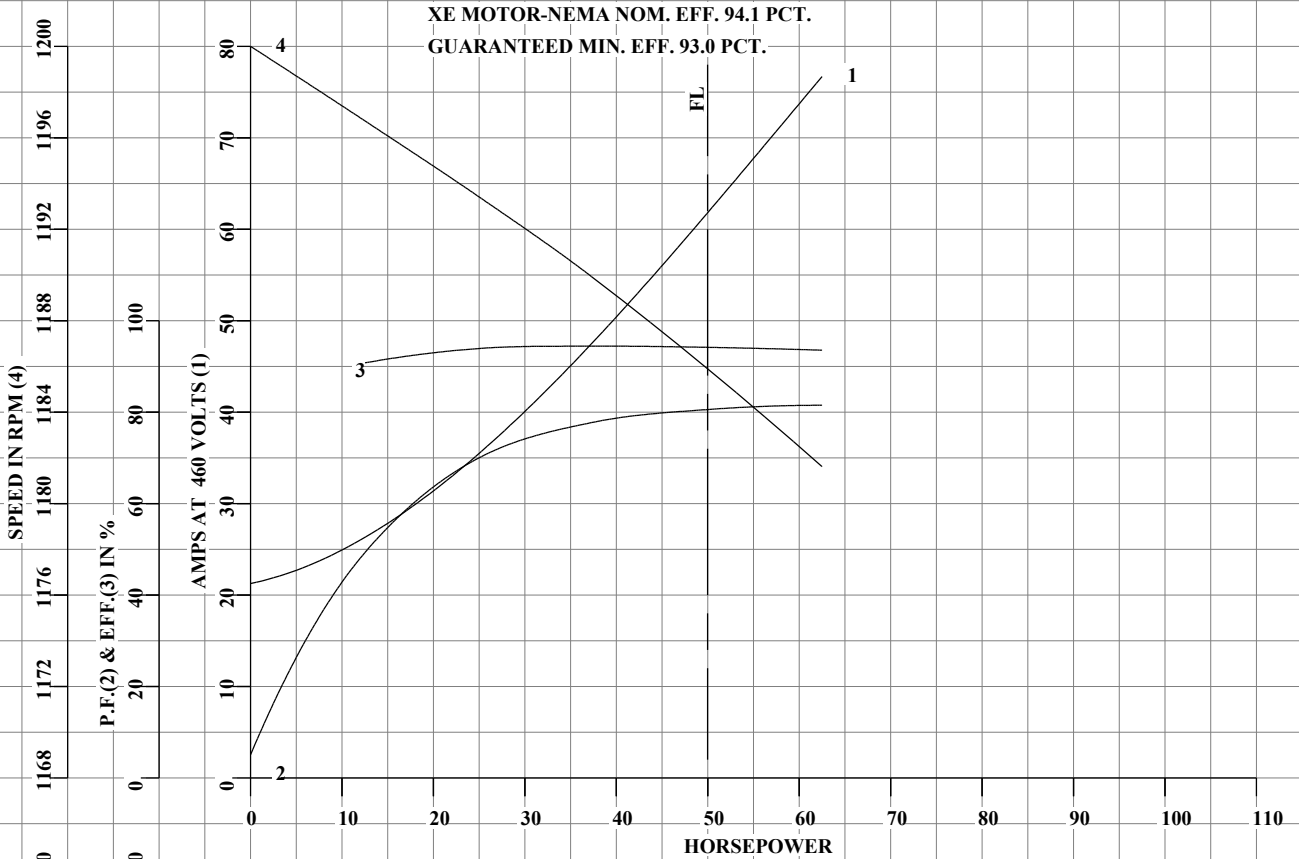
PHASE / HERTZ 3/60

DUTY CONT

ENCLOSURE TEFC

STATOR RES. @ 25°C .0325/.130

OHMS (BETWEEN LINES)



AMPERES SHOWN FOR 230/460 VOLT CONNECTION, IF OTHER VOLTAGE CONNECTIONS ARE AVAILABLE, THE AMPERES WILL VARY INVERSELY WITH THE RATED VOLTAGE.



DRAWN BY: W. L. SMITH
 CHECKED BY: J.J.HARRISON
 APPROVED BY: W. L. SMITH
 DATE: 12/07/05

AC MOTOR
PERFORMANCE
DATA

A36WG0466-R003

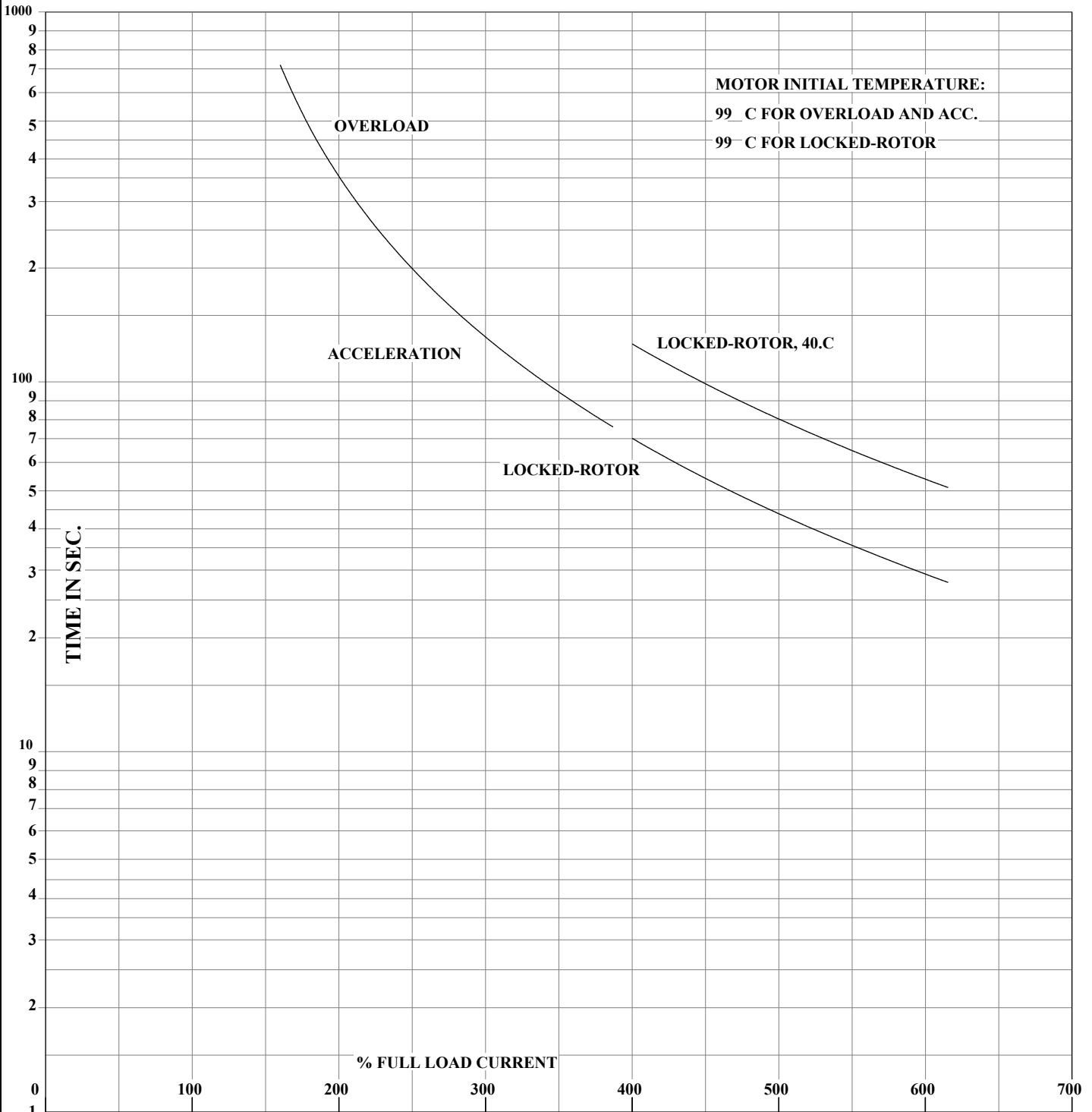
ISSUE DATE 12/14/10

FRAME 365T
HP 50
TYPE P
PHASE / HERTZ 3/60

RPM 1185
VOLTS 230/460
AMPS 123/61.7
DUTY CONT
AMB °C / INSUL 40/F

S.F. 1.15
NEMA DESIGN B
CODE LETTER F
ENCLOSURE TEFC
E/S 892104

ROTOR 418141-74EE
TEST S.O. TYPICAL DATA
TEST DATE ---
STATOR RES. @ 25°C .0325/.130
OHMS (BETWEEN LINES)



THERMAL LIMIT CURVE
XE MOTOR-NEMA NOM. EFF. 94.1 PCT.

AMPERES SHOWN FOR 230/460 VOLT CONNECTION, IF OTHER VOLTAGE CONNECTIONS ARE AVAILABLE, THE AMPERES WILL VARY INVERSELY WITH THE RATED VOLTAGE.

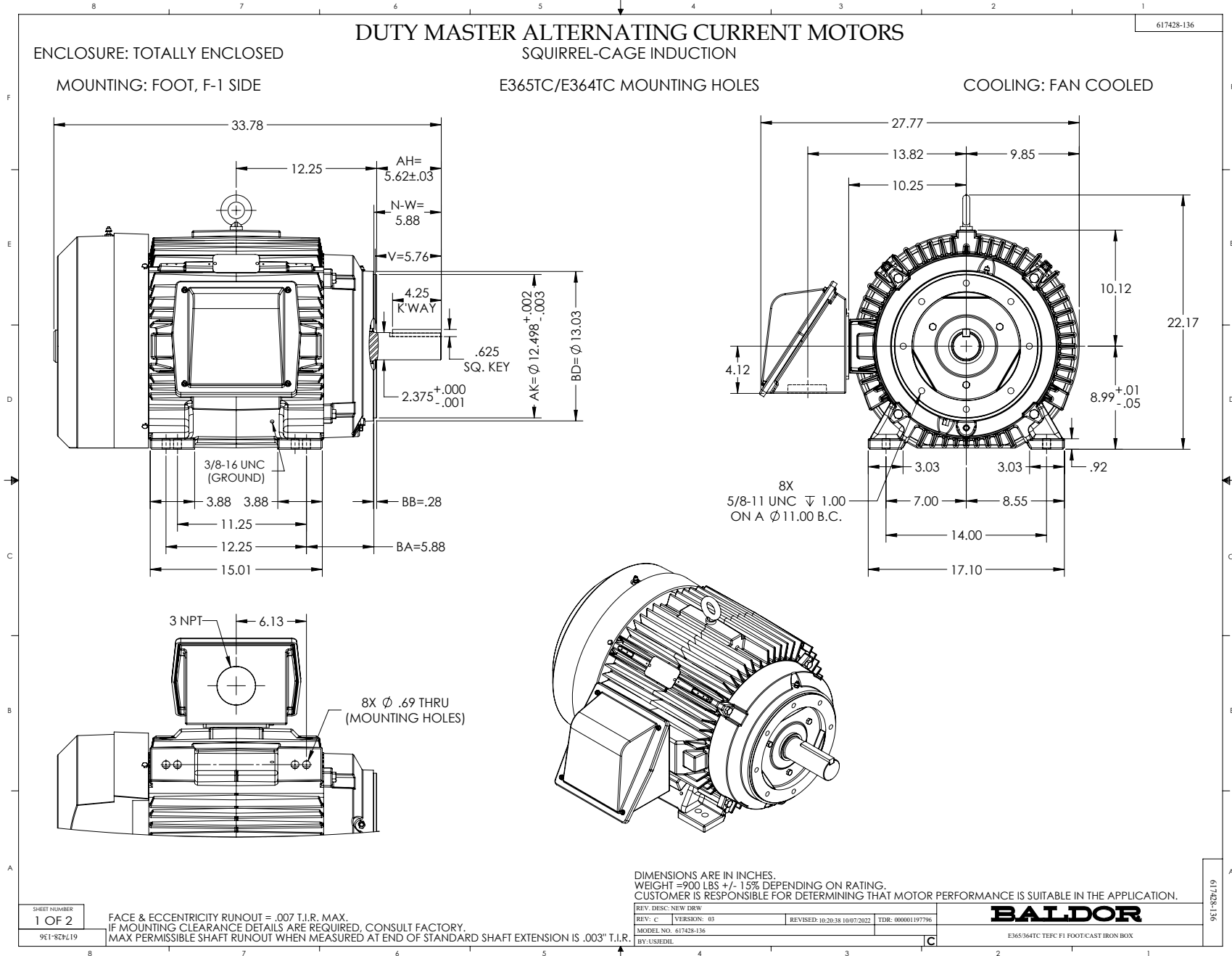


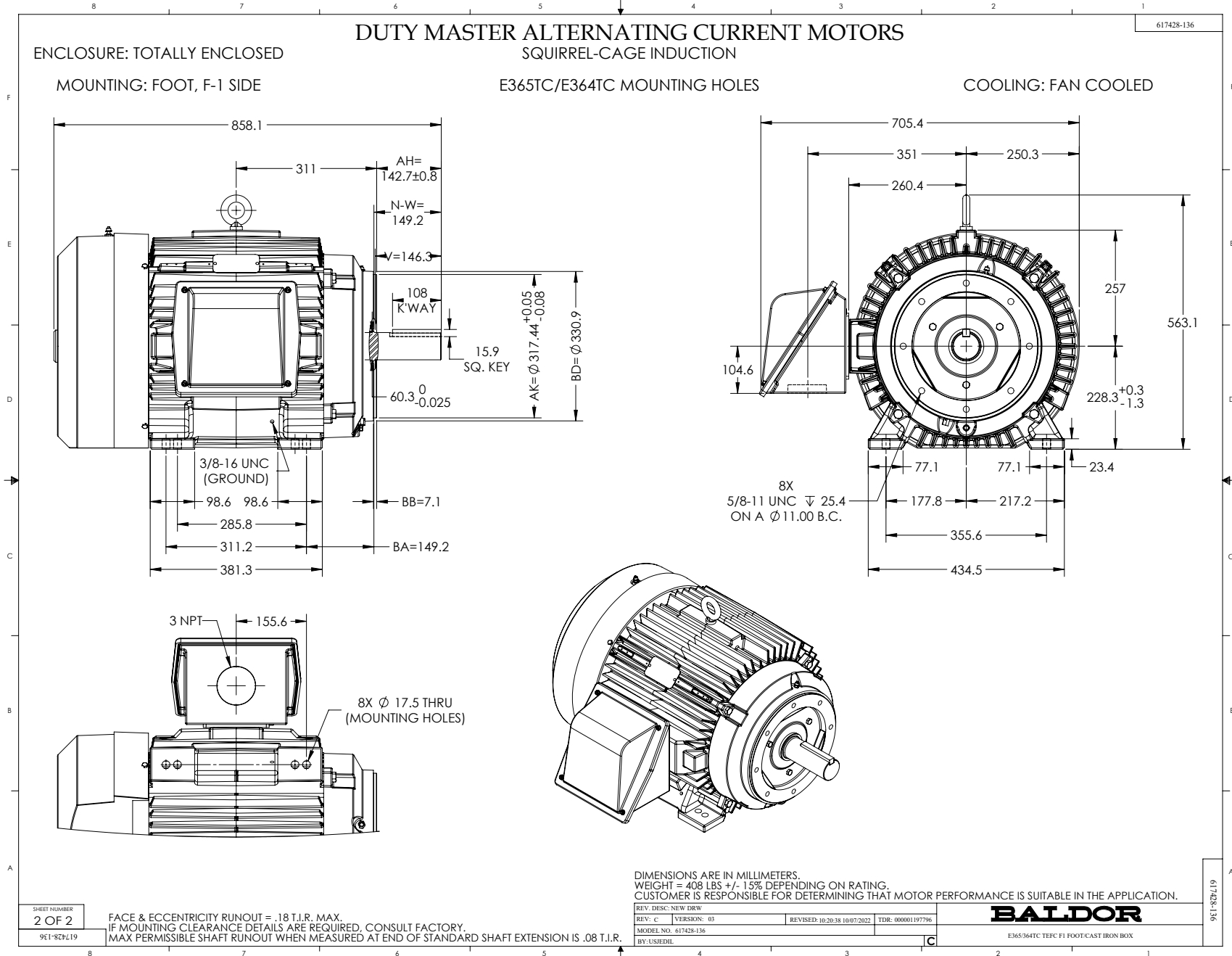
DRAWN BY: W. L. SMITH
CHECKED BY: J.J.HARRISON
APPROVED BY: W. L. SMITH
DATE: 12/07/05

AC MOTOR
PERFORMANCE
DATA

A36WG0466-R003

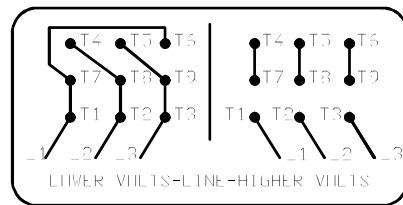
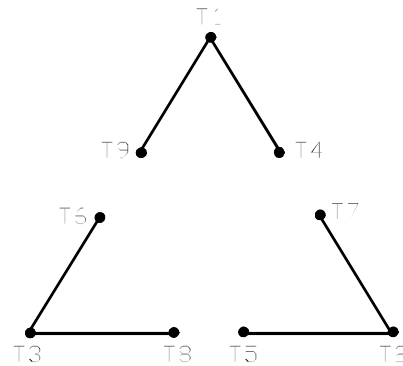
ISSUE DATE 12/14/10





416820-002

A-C MOTOR
CONNECTION DIAGRAM
STANDARD 9 LEAD DELTA-CONNECTED



(N.P. 1575-B)

416820-002

REV. DESC: FONT CHANGE FOR PDF SEARCHABLE		
REV. LTR: A	VERSION: 01	TDR: 000001009382
FILE: \MGA\00000\661	REVISED: 02:46:19 02/13/2020	BY: MGHMTT
MTL: -	© □	

BALDOR - RELIANCE®

CONN DIAG - STANDARD 9 LEAD, DELTA-CONNECTED

SH 1 of 1