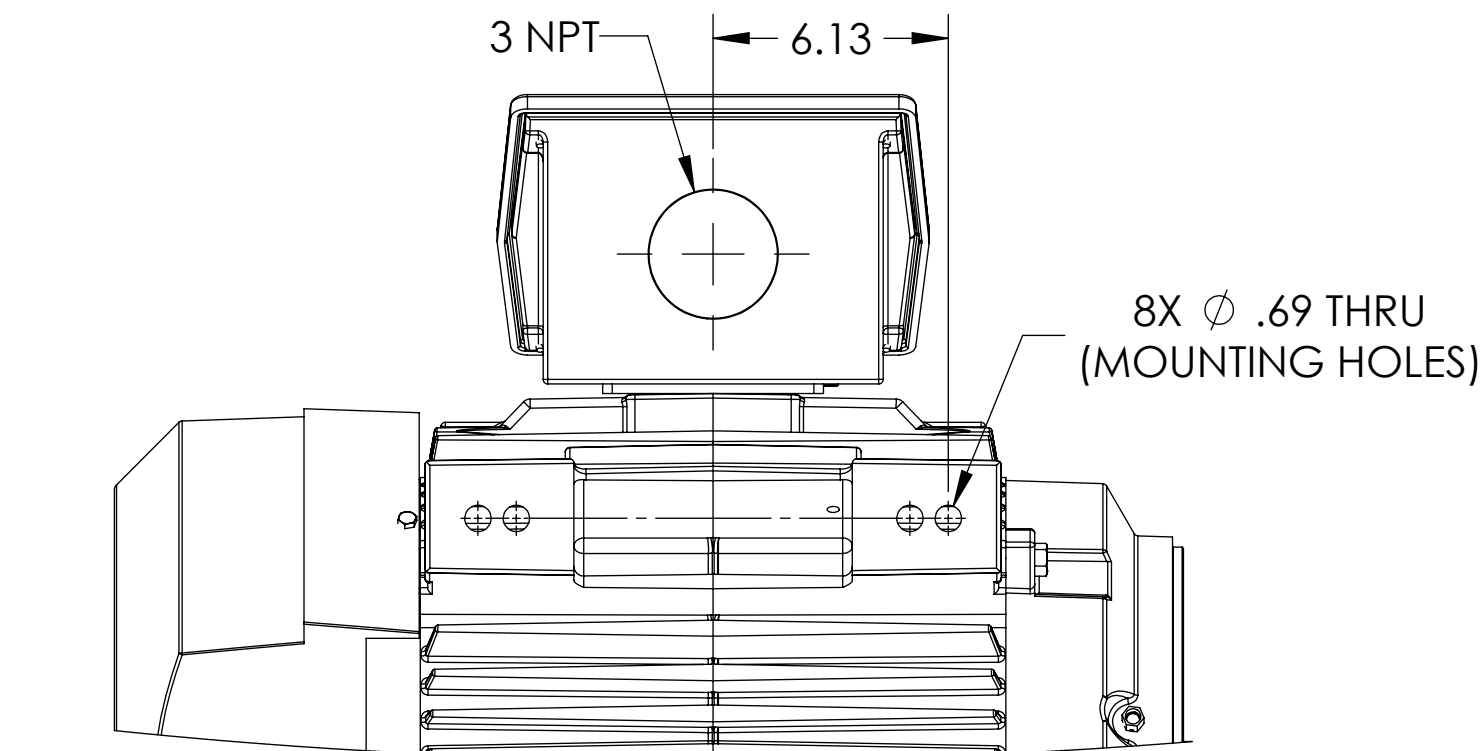
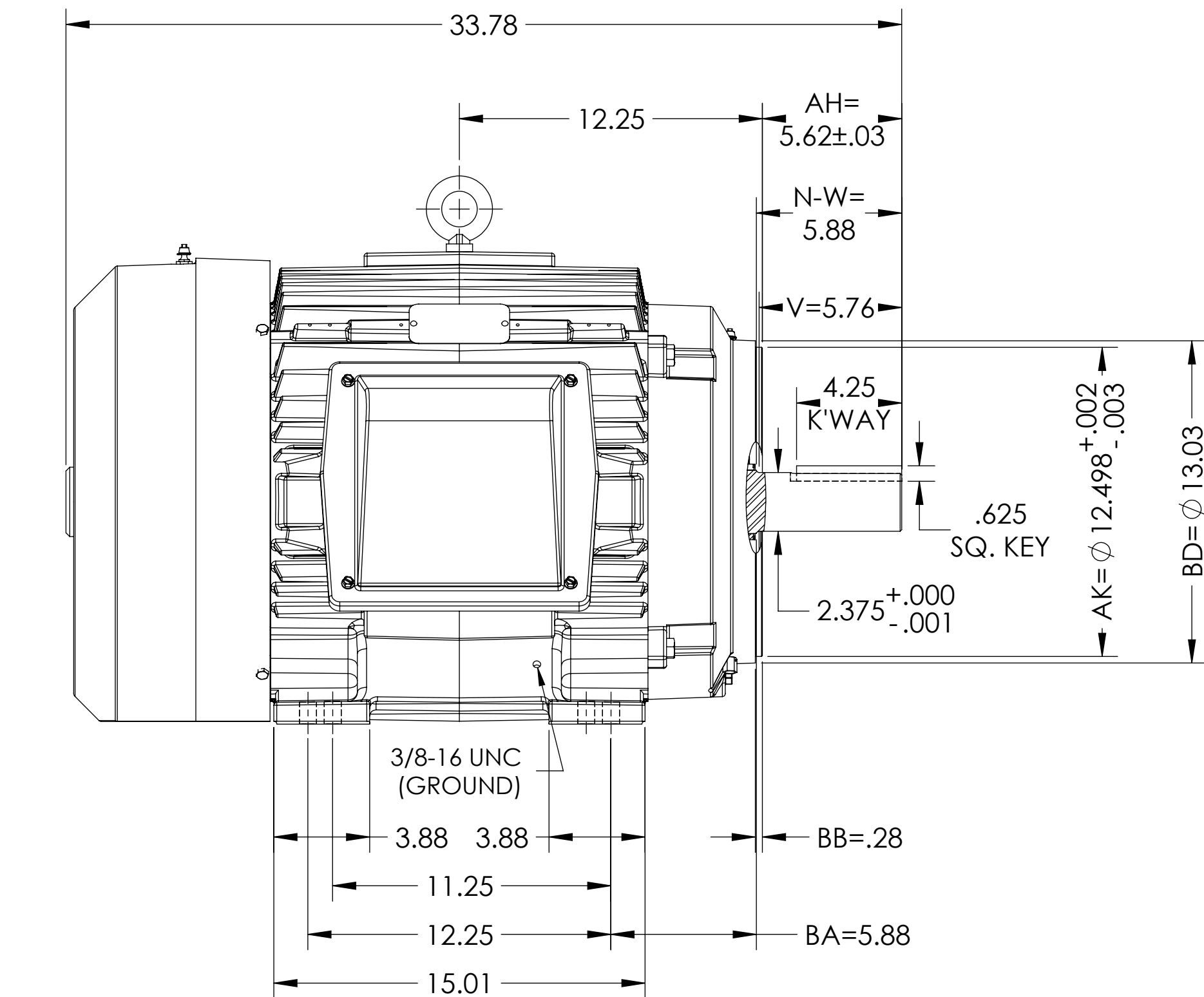


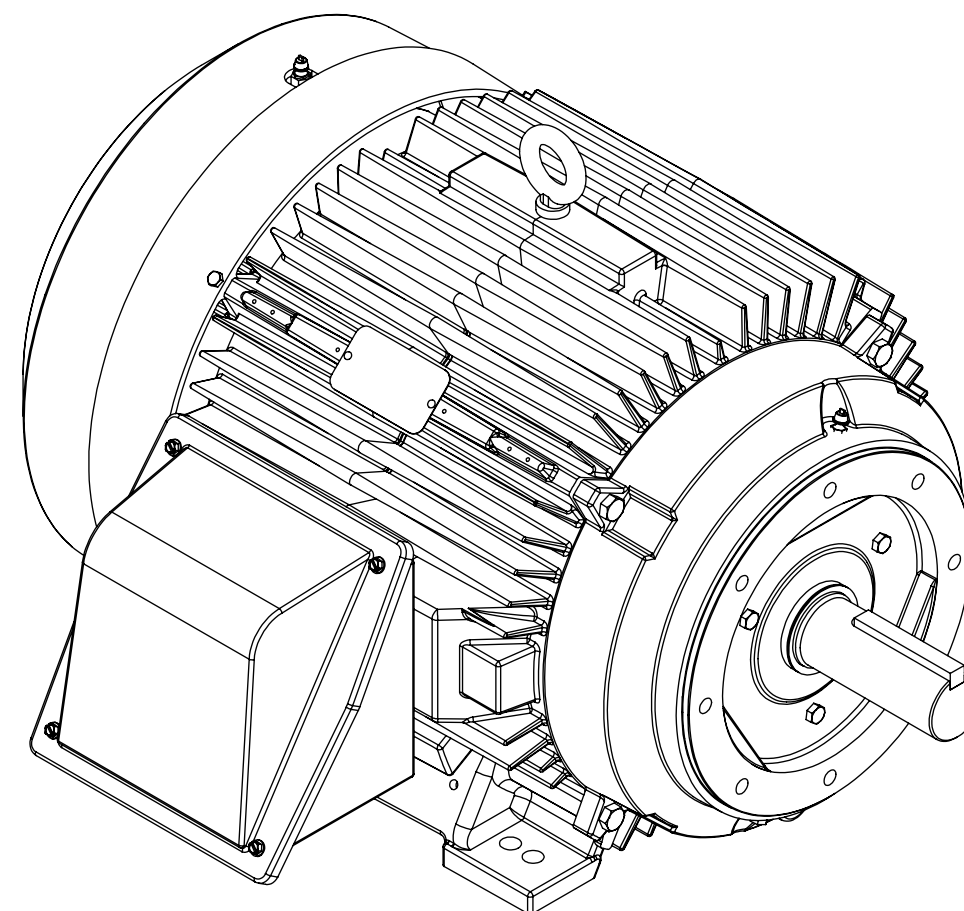
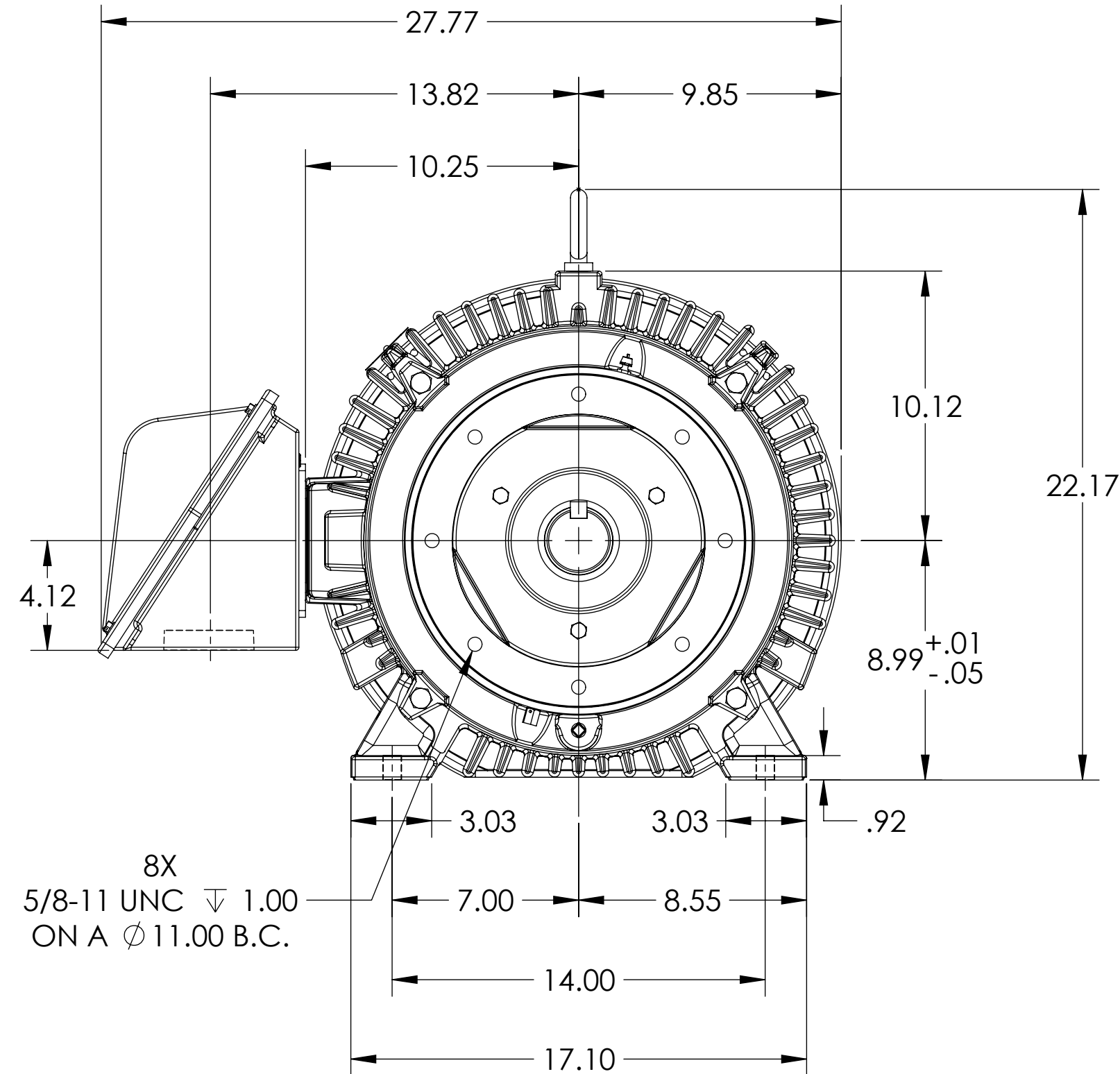
ENCLOSURE: TOTALLY ENCLOSED

MOUNTING: FOOT, F-1 SIDE



E365TC/E364TC MOUNTING HOLES

COOLING: FAN COOLED



DIMENSIONS ARE IN INCHES.
WEIGHT = 900 LBS +/- 15% DEPENDING ON RATING.
CUSTOMER IS RESPONSIBLE FOR DETERMINING THAT MOTOR PERFORMANCE IS SUITABLE IN THE APPLICATION.

REV. DESC: NEW DRW			
REV: C	VERSION: 03	REVISED: 10:20:38 10/07/2022	TDR: 000001197796
MODEL NO. 617428-136			
BY: USJEDIL			

BALDOR

E365/364TC TEFC F1 FOOT/CAST IRON BOX

SHEET NUMBER
1 OF 2

617428-136

FACE & ECCENTRICITY RUNOUT = .007 T.I.R. MAX.
IF MOUNTING CLEARANCE DETAILS ARE REQUIRED, CONSULT FACTORY.
MAX PERMISSIBLE SHAFT RUNOUT WHEN MEASURED AT END OF STANDARD SHAFT EXTENSION IS .003" T.I.R.

617428-136

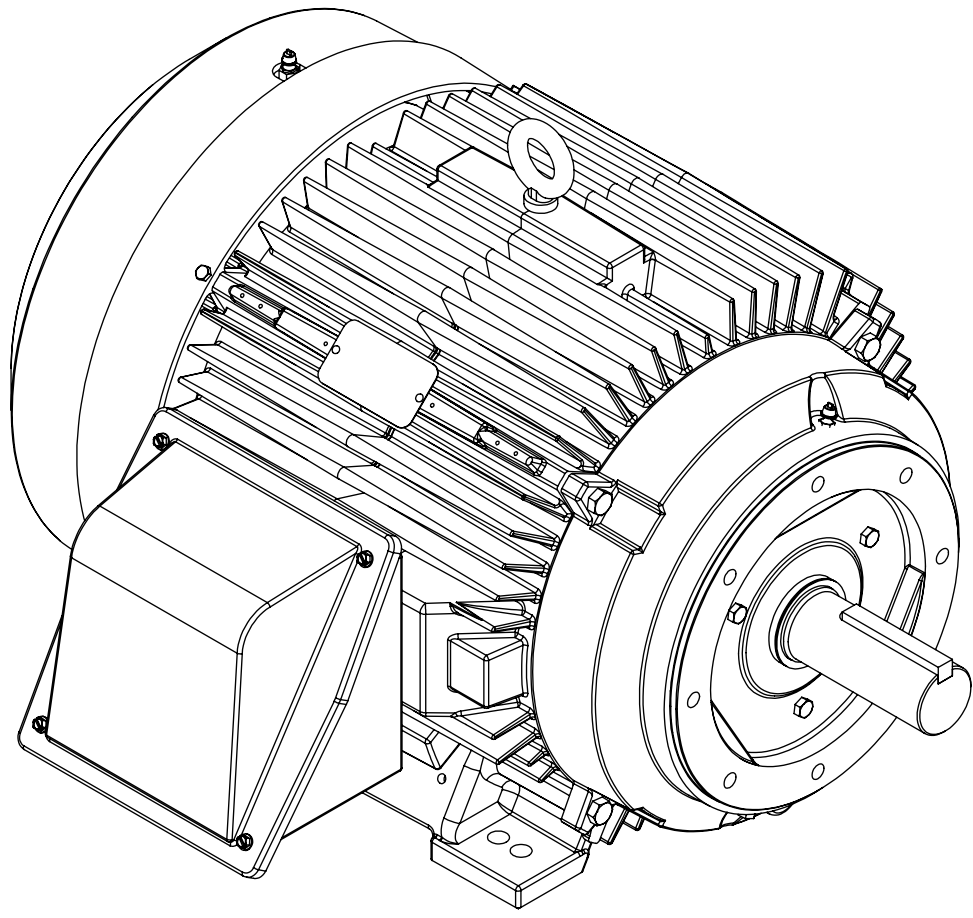
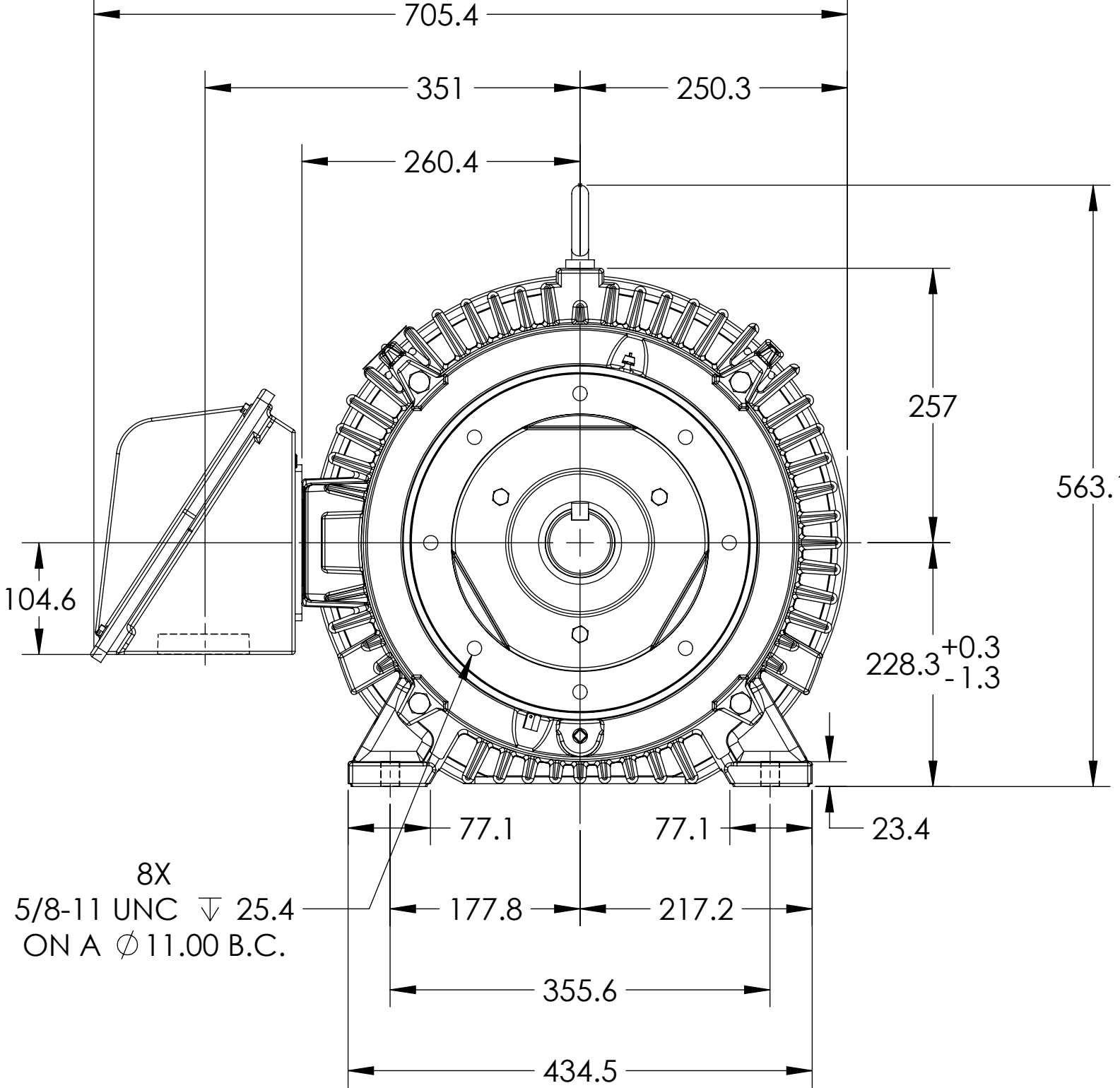
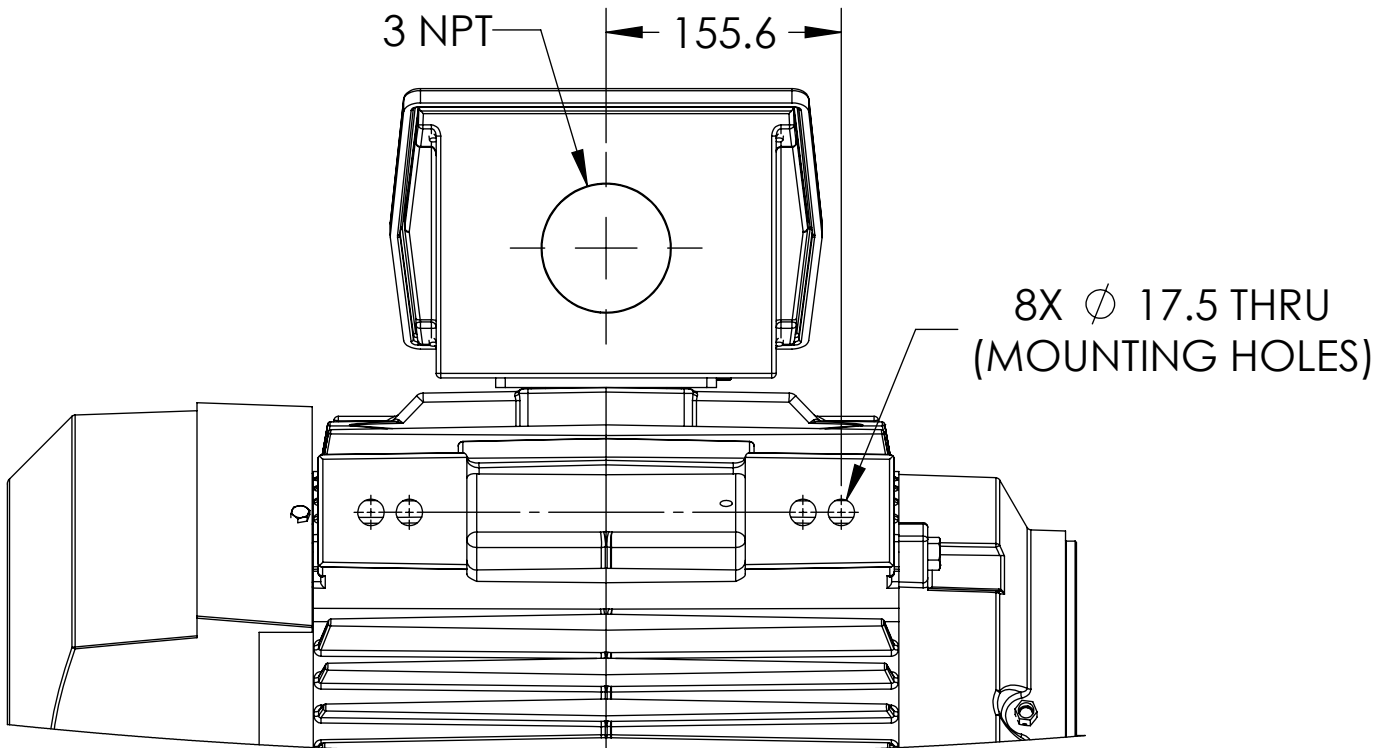
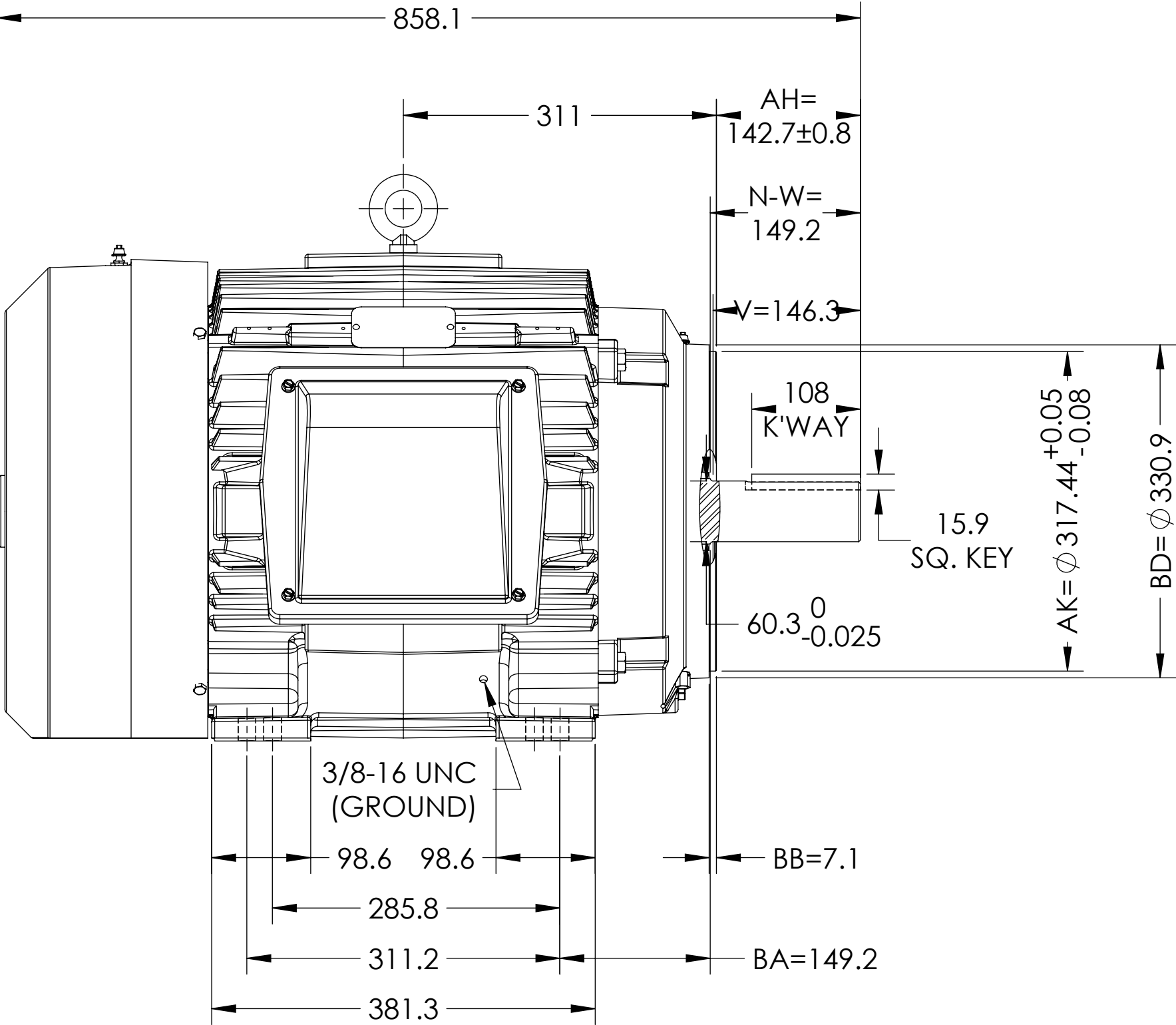
DUTY MASTER ALTERNATING CURRENT MOTORS
SQUIRREL-CAGE INDUCTION

ENCLOSURE: TOTALLY ENCLOSED

MOUNTING: FOOT, F-1 SIDE

E365TC/E364TC MOUNTING HOLES

COOLING: FAN COOLED



DIMENSIONS ARE IN MILLIMETERS.
WEIGHT = 408 LBS +/- 15% DEPENDING ON RATING.
CUSTOMER IS RESPONSIBLE FOR DETERMINING THAT MOTOR PERFORMANCE IS SUITABLE IN THE APPLICATION.

REV. DESC: NEW DRW			
REV: C	VERSION: 03	REVISED: 10:20:38 10/07/2022	TDR: 000001197796
MODEL NO. 617428-136			
BY: USJEDIL			

BALDOR

E365/364TC TEFC F1 FOOT/CAST IRON BOX

SHEET NUMBER
2 OF 2

617428-136

FACE & ECCENTRICITY RUNOUT = .18 T.I.R. MAX.
IF MOUNTING CLEARANCE DETAILS ARE REQUIRED, CONSULT FACTORY.
MAX PERMISSIBLE SHAFT RUNOUT WHEN MEASURED AT END OF STANDARD SHAFT EXTENSION IS .08 T.I.R.