



---

# Customer information packet

## CECP3764T

3HP, 1165RPM, 3PH, 60HZ, 213TC, 0738M, TEFC, F1

Class - CLI GP A,B,C,D

Division - Division II

## Specifications

Enclosure	TEFC
Frame	213TC
Frame Material	Iron
Frequency	60.00 Hz
Haz Area Class and Group	CLI GP A,B,C,D
Haz Area Division	Division II
Motor Letter Type	Three Phase
Output @ Frequency	3.000 HP @ 60 HZ
Phase	3
Synchronous Speed @ Frequency	1200 RPM @ 60 HZ
Voltage @ Frequency	230.0 V @ 60 HZ 460.0 V @ 60 HZ
Agency Approvals	CSA EEV NEMA PREMIUM NEMA_PREMIUM UR CCSA US
Ambient Temperature	40 °C
Auxillary Box	No Auxillary Box
Auxillary Box Lead Termination	None
Base Indicator	Rigid
Bearing Grease Type	Polyrex EM (-20F +300F)
Blower	None
Constant Torque Speed Range	1.8
Current @ Voltage	9.000 A @ 230.0 V 4.500 A @ 460.0 V
Design Code	B
Drip Cover	No Drip Cover
Duty Rating	CONT
Efficiency @ 100% Load	90.2 %
Electrically Isolated Bearing	Not Electrically Isolated
Enclosure Modification	Severe Duty Features

## Part detail

Revision	N
Type	AC
Mech. spec.	07K373
Base	
Status	PRD/A
Elec. spec.	07WGX822
Layout	07LYK373
Eff. date	09-14-2022
CD Diagram	CD0005
Poles	06
Leads	9#14
Proprietary	False
Created date	11-18-2013

Feedback Device	NO FEEDBACK
Front Face Code	Standard
Front Shaft Indicator	None
Haz Area Temp Code	T3C
Heater Indicator	No Heater
High Voltage Full Load Amps	4.5 a
Insulation Class	F
Inverter Code	Inverter Duty
KVA Code	K
Lifting Lugs	Standard Lifting Lugs
Locked Bearing Indicator	Locked Bearing
Max Speed	1800 rpm
Motor Lead Exit	Ko Box
Motor Lead Quantity/Wire Size	9 @ 14 AWG
Motor Lead Termination	Flying Leads
Motor Standards	NEMA
Motor Type	0738M
Mounting Arrangement	F1
Number of Poles	6
Overall Length	20.24 IN
Power Factor	70
Product Family	Super-E Chemical Processing
Pulley End Bearing Type	Ball
Pulley Face Code	C-Face
Pulley Shaft Indicator	Standard
Rodent Screen	None
RoHS Status	ROHS COMPLIANT
Service Factor	1.15
Shaft Diameter	1.375 IN
Shaft Extension Location	Pulley End
Shaft Ground Indicator	No Shaft Grounding
Shaft Rotation	Reversible
Shaft Slinger Indicator	Shaft Slinger
Speed	1165 rpm

<b>Speed Code</b>	Single Speed
<b>Starting Method</b>	Direct on line
<b>Thermal Device - Bearing</b>	None
<b>Thermal Device - Winding</b>	None
<b>Vibration Sensor Indicator</b>	No Vibration Sensor
<b>Winding Thermal 1</b>	None
<b>Winding Thermal 2</b>	None

**Nameplate**

<b>NP3257</b>									
<b>CAT.NO.</b>	CECP3764T								
<b>SPEC.</b>	07K373X822G1								
<b>HP</b>	3 TE								
<b>VOLTS</b>	230/460								
<b>AMP</b>	9/4.5								
<b>RPM</b>	1165								
<b>FRAME</b>	213TC	<b>HZ</b>	60	<b>PH</b>	3				
<b>SER.F.</b>	1.15	<b>CODE</b>	K	<b>DES</b>	B	<b>CL</b>	F		
<b>RATING</b>	40C AMB-CONT								
<b>SN</b>									
<b>DE</b>	6307	<b>ODE</b>	6307						
<b>NEMA-NOM-EFF</b>	90.2	<b>PF</b>	70						
<b>G.MIN.EFF</b>	88.5	<b>CC</b>	010A						
<b>T. CODE</b>	T3C	<b>T=</b>	160						

<b>NP3260</b>			
<b>SPEC.</b>	07K373X822G1		
<b>D.E. BRG.</b>	35BC03XP30X		
<b>O.D.E. BRG.</b>	35BC03XP30X		
<b>GREASE</b>	POLYREX EM		
<b>RPM MAX</b>	1800	<b>MAX. KVAR</b>	N/A
<b>BLANK</b>			
<b>INV.TYPE</b>	PWM		
<b>T=</b>	160		
<b>C HP FR</b>	60	<b>C HP TO</b>	90
<b>CT HZ FROM</b>	1.8	<b>CT HZ TO</b>	60
<b>VT HZ FROM</b>	-0	<b>VT HZ TO</b>	60
<b>HTR-VOLTS</b>		<b>HTR-AMPS</b>	
<b>HTR-WATTS</b>		<b>MAX. SPACE HEATER TEMP.</b>	

**AC Induction Motor Performance Data**

Record # 47059

Typical performance - not guaranteed values

Winding: 07WGX822-R032		Type: 0738M	Enclosure: TEFC
<b>Nameplate Data</b>		<b>460 V, 60 Hz: High Voltage Connection</b>	
Rated Output (HP)	3	Full Load Torque	13.46 LB-FT
Volts	230/460	Start Configuration	direct on line
Full Load Amps	9/4.5	Breakdown Torque	46.79 LB-FT
R.P.M.	1165	Pull-up Torque	30.52 LB-FT
Hz	60 Phase	Locked-rotor Torque	34.44 LB-FT
NEMA Design Code	B KVA Code	Starting Current	32 A
Service Factor (S.F.)	1.15	No-load Current	2.35 A
NEMA Nom. Eff.	90.2 Power Factor	Line-line Res. @ 25°C	2.62 Ω
Rating - Duty	40C AMB-CONT	Temp. Rise @ Rated Load	31°C
S.F. Amps		Temp. Rise @ S.F. Load	37°C
		Locked-rotor Power Factor	22.7
		Rotor inertia	0.945 LB-FT <sup>2</sup>

**Load Characteristics 460 V, 60 Hz, 3 HP**

% of Rated Load	25	50	75	100	125	150	S.F.
Power Factor	33	51	62	69	73	75	72
Efficiency	83.1	88.7	90.7	90.3	89.4	87.7	89.6
Speed	1191	1184	1176	1170	1160	1147	1162
Line amperes	2.62	3.11	3.75	4.51	5.38	6.39	5

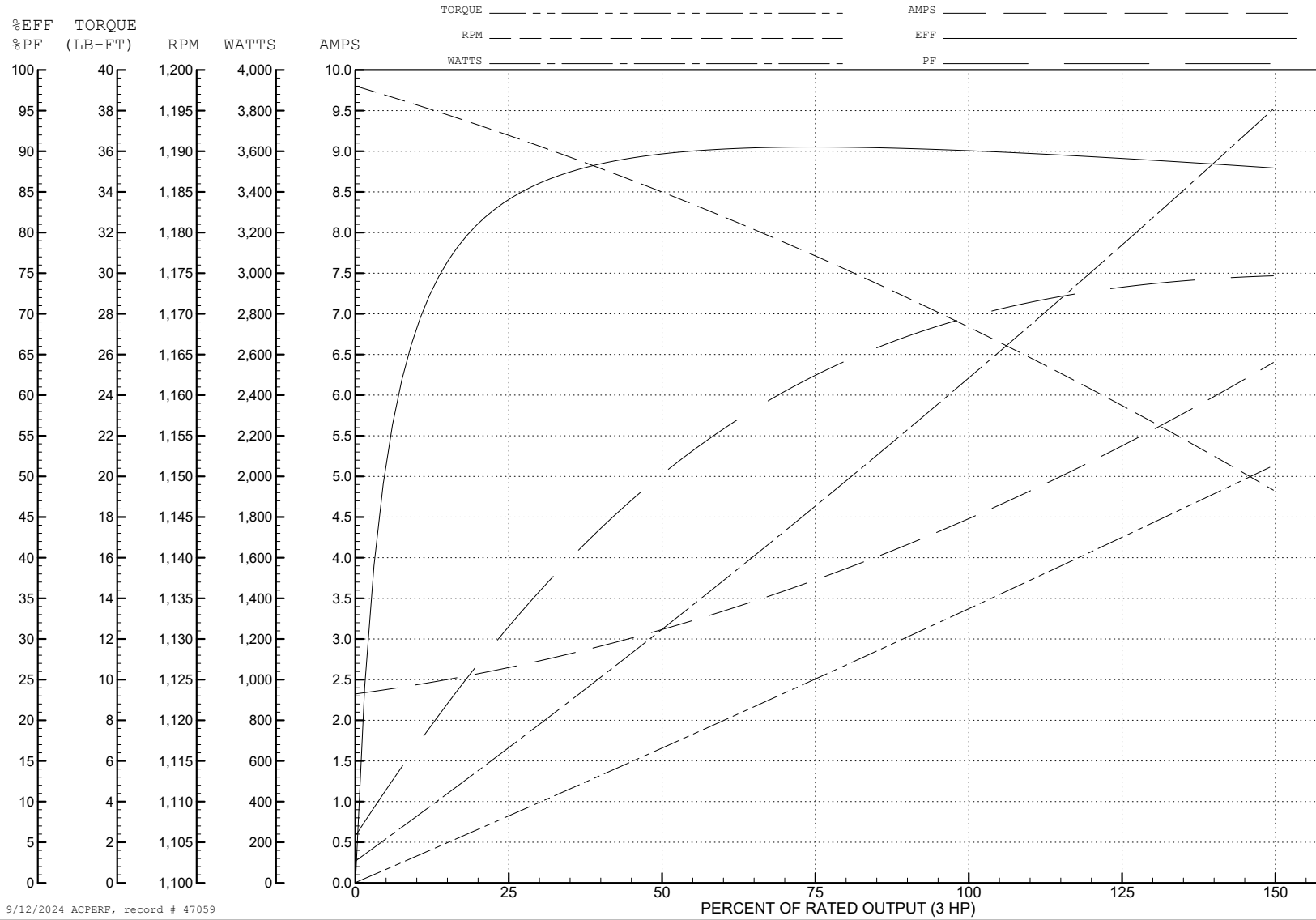
ABB Motors and Mechanical Inc.

WINDING # 07WX822

3 HP 3 PH 60 HZ 1165 RPM 460 V 0738M

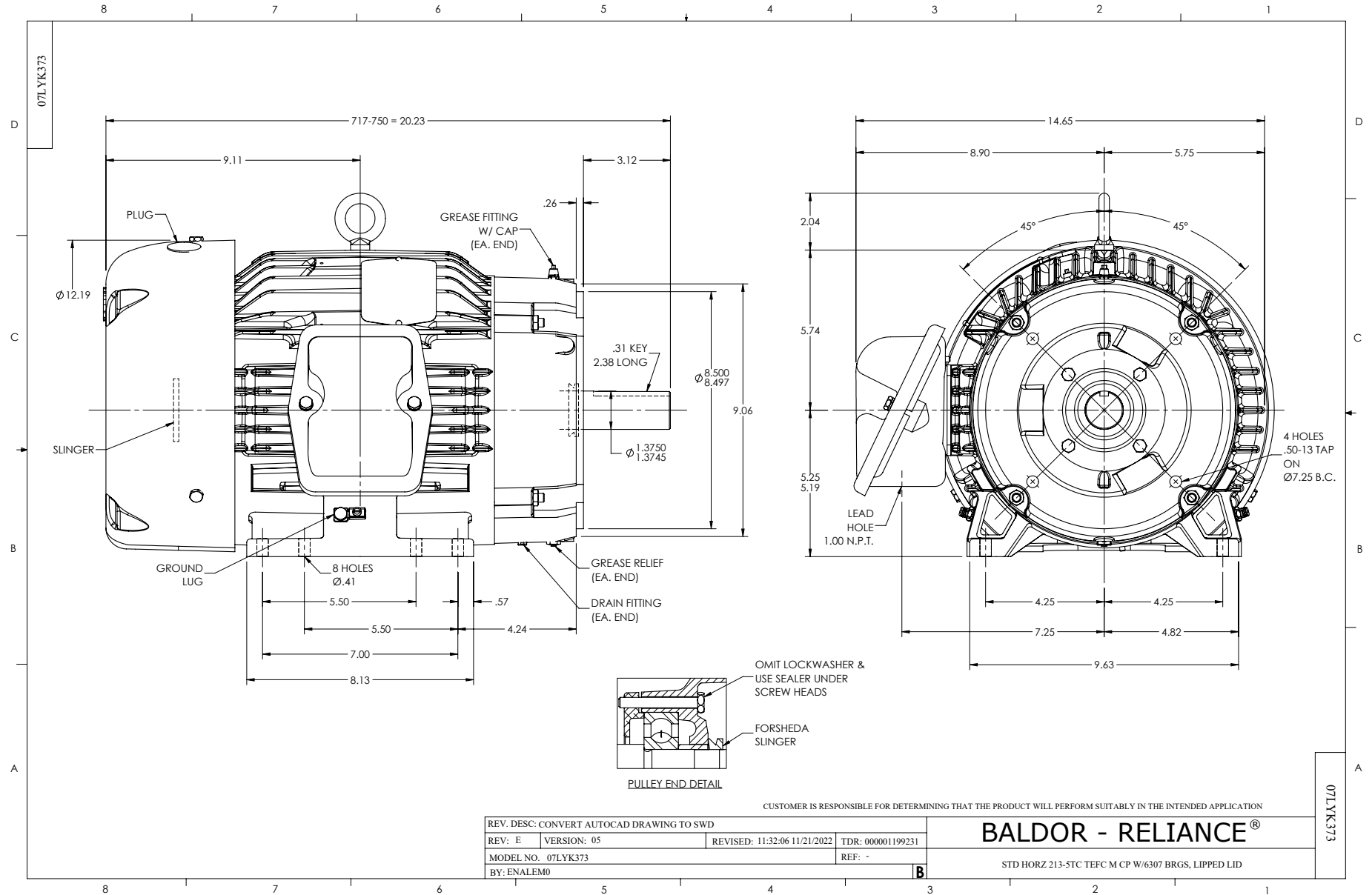
Typical performance - not guaranteed values.

TORQUES (LB-FT): PO=46.79 PU=30.52 LR=34.44 LRA=32

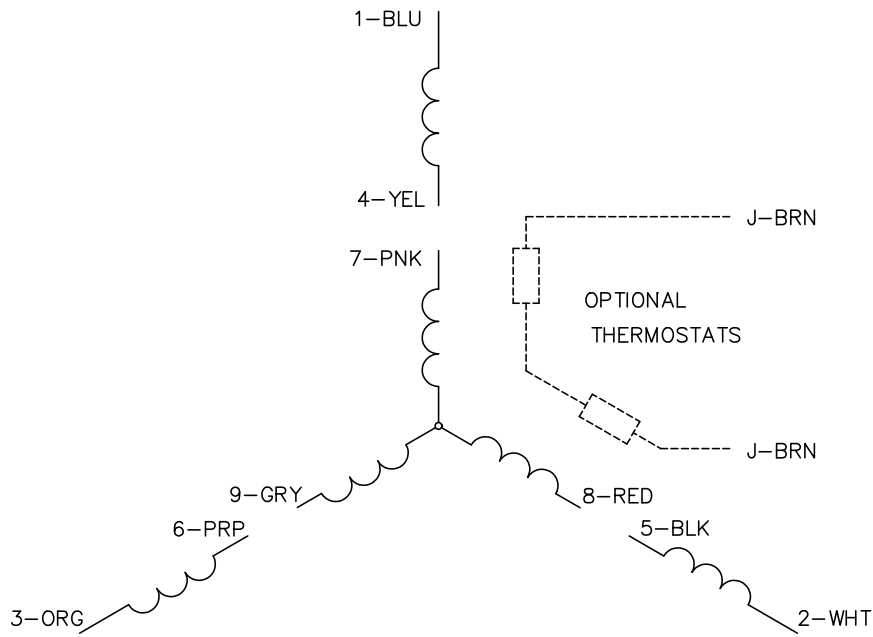


9/12/2024 ACPERF, record # 47059

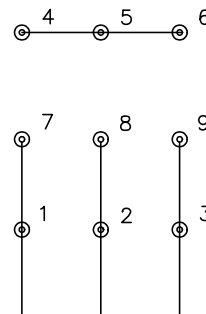




CD0005

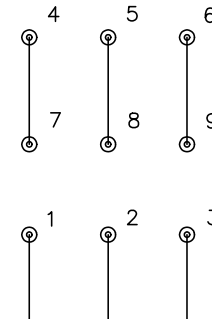


LOW VOLTAGE  
(2Y)



LINE

HIGH VOLTAGE  
(1Y)



LINE

NOTES:

1. INTERCHANGE ANY TWO LINE LEADS TO REVERSE ROTATION.
2. OPTIONAL THERMOSTATS ARE PROVIDED WHEN SPECIFIED.
3. ACTUAL NUMBER OF INTERNAL PARALLEL CIRCUITS MAY BE A MULTIPLE OF THOSE SHOWN ABOVE.
4. LEAD COLORS ARE OPTIONAL. LEADS MUST ALWAYS BE NUMBERED AS SHOWN.

CD0005

REV. DESC: REVISE TO SHOW OPTIONAL COLORS			
REV. LTR: E	BY: JLP	REVISED: 01/19/99 10:15	TDR: 0171435
S00000		FILE: AAA00005140	MDL: -
		MTL: -	

**BALDOR ELECTRIC Co.**

3PH, DV, 9 LEADS