



Customer information packet

CECP3664T

2HP, 1165RPM, 3PH, 60HZ, 184TC, 0642M, TEFC, F1

Class - CLI GP A,B,C,D

Division - Division II

Specifications

Enclosure	TEFC
Frame	184TC
Frame Material	Iron
Frequency	60.00 Hz
Haz Area Class and Group	CLI GP A,B,C,D
Haz Area Division	Division II
Motor Letter Type	Three Phase
Output @ Frequency	2.000 HP @ 60 HZ
Phase	3
Synchronous Speed @ Frequency	1200 RPM @ 60 HZ
Voltage @ Frequency	230.0 V @ 60 HZ 460.0 V @ 60 HZ
Agency Approvals	CSA EEV NEMA PREMIUM NEMA_PREMIUM UR CCSA US
Ambient Temperature	40 °C
Auxillary Box	No Auxillary Box
Auxillary Box Lead Termination	None
Base Indicator	Rigid
Bearing Grease Type	Polyrex EM (-20F +300F)
Blower	None
Constant Torque Speed Range	1.8
Current @ Voltage	6.400 A @ 230.0 V 3.200 A @ 460.0 V
Design Code	B
Drip Cover	No Drip Cover
Duty Rating	CONT
Efficiency @ 100% Load	88.5 %
Electrically Isolated Bearing	Not Electrically Isolated
Enclosure Modification	Severe Duty Features

Part detail

Revision	L
Type	AC
Mech. spec.	06H482
Base	
Status	PRD/A
Elec. spec.	06WGW970
Layout	06LYH482
Eff. date	11-11-2020
CD Diagram	CD0005
Poles	06
Leads	9#16
Proprietary	False
Created date	11-18-2013

Feedback Device	NO FEEDBACK
Front Face Code	Standard
Front Shaft Indicator	None
Haz Area Temp Code	T3C
Heater Indicator	No Heater
High Voltage Full Load Amps	3.2 a
Insulation Class	F
Inverter Code	Inverter Duty
KVA Code	K
Lifting Lugs	Standard Lifting Lugs
Locked Bearing Indicator	Locked Bearing
Max Speed	1800 rpm
Motor Lead Exit	Ko Box
Motor Lead Quantity/Wire Size	9 @ 16 AWG
Motor Lead Termination	Flying Leads
Motor Standards	NEMA
Motor Type	0642M
Mounting Arrangement	F1
Number of Poles	6
Overall Length	16.68 IN
Power Factor	68
Product Family	Super-E Chemical Processing
Pulley End Bearing Type	Ball
Pulley Face Code	C-Face
Pulley Shaft Indicator	Standard
Rodent Screen	None
Service Factor	1.15
Shaft Diameter	1.125 IN
Shaft Extension Location	Pulley End
Shaft Ground Indicator	No Shaft Grounding
Shaft Rotation	Reversible
Shaft Slinger Indicator	Shaft Slinger
Speed	1165 rpm
Speed Code	Single Speed

Starting Method	Direct on line
Thermal Device - Bearing	None
Thermal Device - Winding	None
Vibration Sensor Indicator	No Vibration Sensor
Winding Thermal 1	None
Winding Thermal 2	None

Nameplate

NP3257									
CAT.NO.	CECP3664T								
SPEC.	06H482W970G1								
HP	2 TE								
VOLTS	230/460								
AMP	6.4/3.2								
RPM	1165								
FRAME	184TC	HZ	60	PH	3				
SER.F.	1.15	CODE	K	DES	B	CL	F		
RATING	40C AMB-CONT								
SN									
DE	6206	ODE	6206						
NEMA-NOM-EFF	88.5	PF	68						
G.MIN.EFF	86.5	CC	010A						
T. CODE	T3C	T=	160						

NP3260			
SPEC.	06H482W970G1		
D.E. BRG.	30BC02XP30X		
O.D.E. BRG.	30BC02XP30X		
GREASE	POLYREX EM		
RPM MAX	1800	MAX. KVAR	N/A
BLANK			
INV.TYPE	PWM		
T=	160		
C HP FR	60	C HP TO	90
CT HZ FROM	1.8	CT HZ TO	60
VT HZ FROM	-0	VT HZ TO	60
HTR-VOLTS		HTR-AMPS	
HTR-WATTS		MAX. SPACE HEATER TEMP.	

AC Induction Motor Performance Data

Record # 47054

Typical performance - not guaranteed values

Winding: 06WGW970-R019		Type: 0642M		Enclosure: TEFC	
Nameplate Data			460 V, 60 Hz: High Voltage Connection		
Rated Output (HP)	2	Full Load Torque	9.05 LB-FT		
Volts	230/460	Start Configuration	direct on line		
Full Load Amps	6.4/3.2	Breakdown Torque	31.2 LB-FT		
R.P.M.	1165	Pull-up Torque	16.7 LB-FT		
Hz	60 Phase	3	Locked-rotor Torque	19.9 LB-FT	
NEMA Design Code	B KVA Code	K	Starting Current	20.9 A	
Service Factor (S.F.)		1.15	No-load Current	1.84 A	
NEMA Nom. Eff.	88.5 Power Factor	68	Line-line Res. @ 25°C	5.42 Ω	
Rating - Duty		40C AMB-CONT	Temp. Rise @ Rated Load	27°C	
S.F. Amps			Temp. Rise @ S.F. Load	33°C	
			Rotor inertia	0.394 LB-FT ²	

Load Characteristics 460 V, 60 Hz, 2 HP

% of Rated Load	25	50	75	100	125	150	S.F.
Power Factor	31	48	60	68	73	75	71
Efficiency	80.5	86.9	88.5	88.6	87.9	86.6	88.2
Speed	1193.1	1186	1178.3	1170	1160.8	1150	1164
Line amperes	1.97	2.26	2.67	3.14	3.68	4.33	3.46

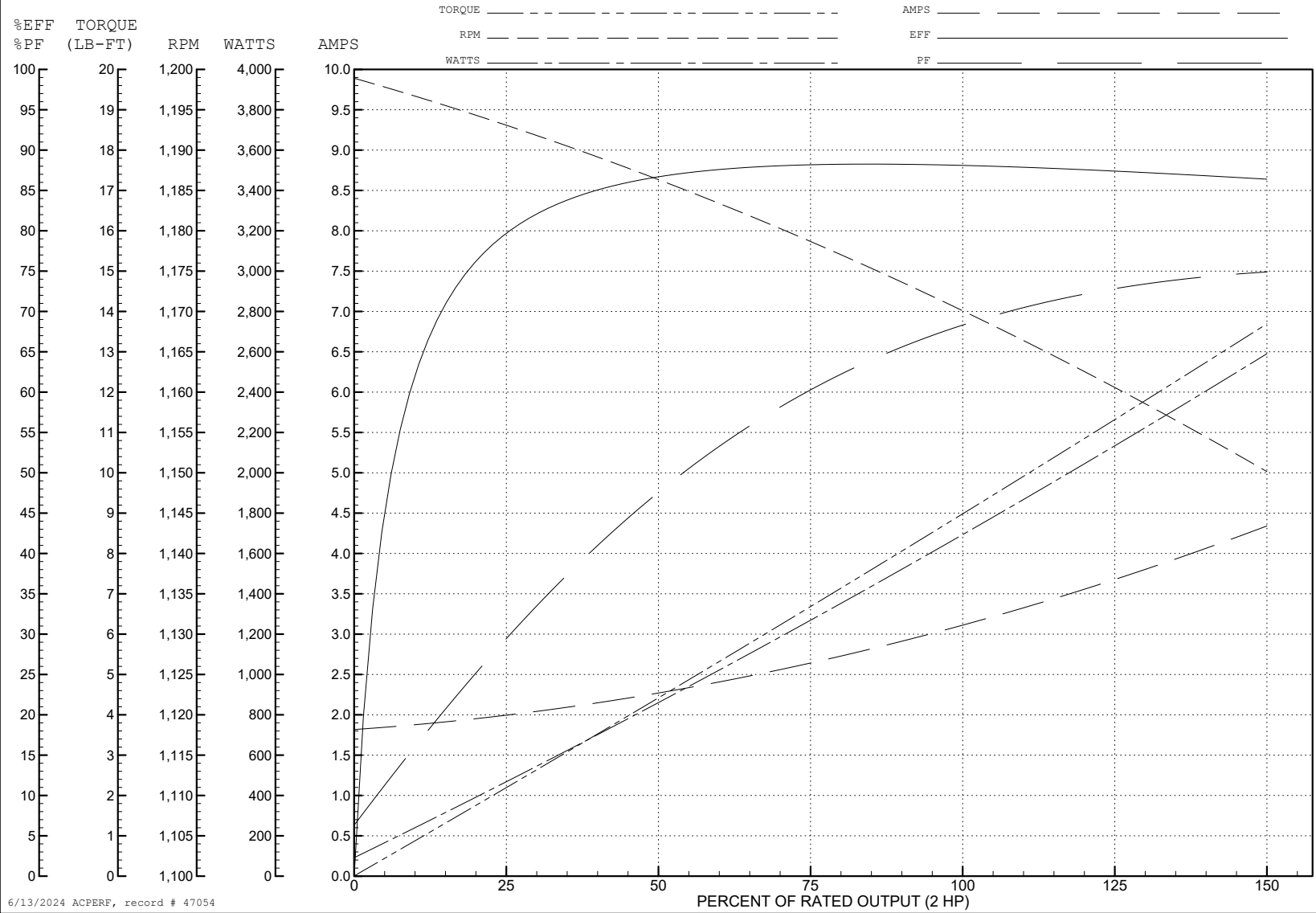
ABB Motors and Mechanical Inc.

WINDING # 06WGW970

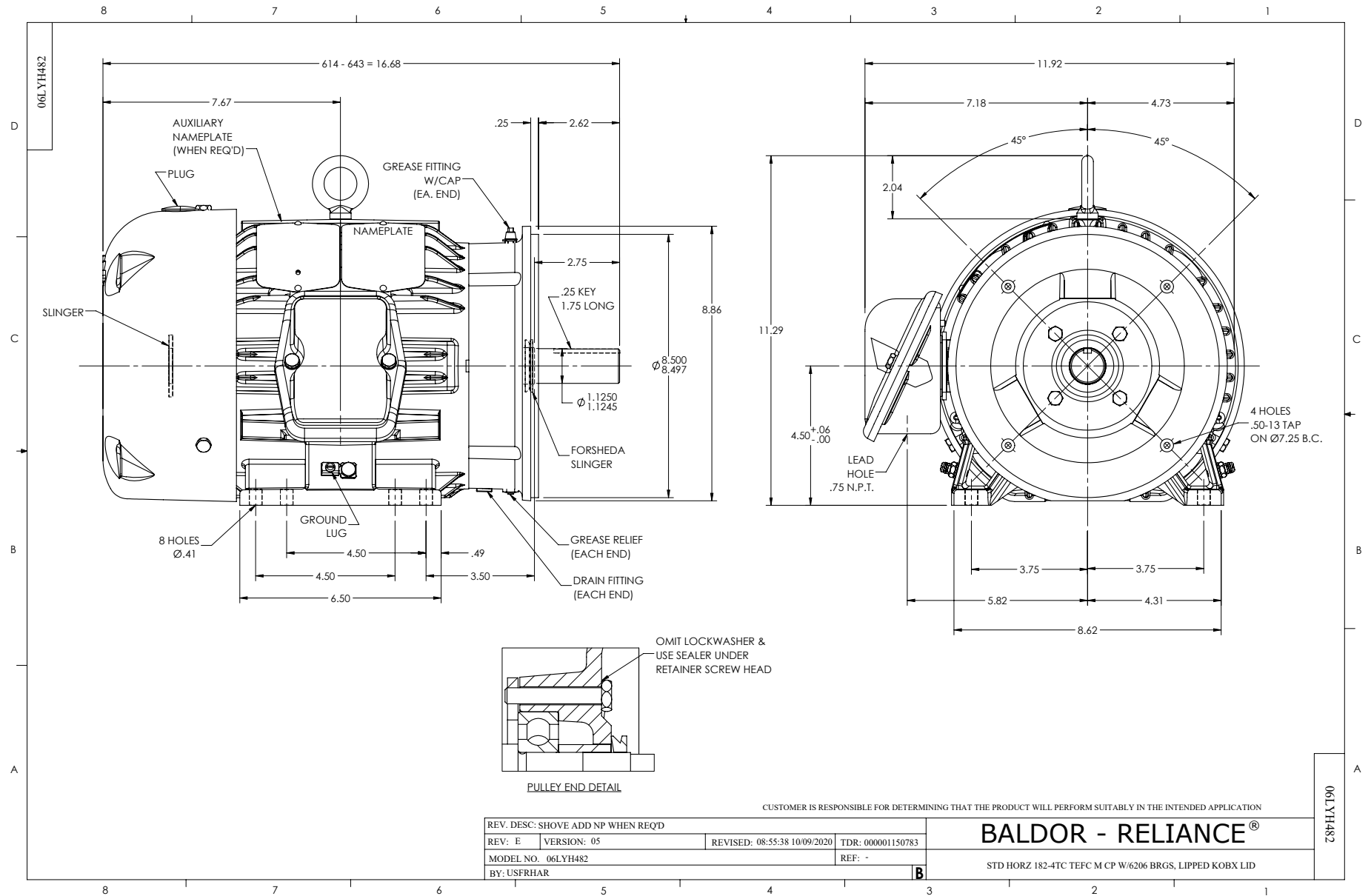
Typical performance - not guaranteed values.

2 HP 3 PH 60 HZ 1165 RPM 460 V 0642M

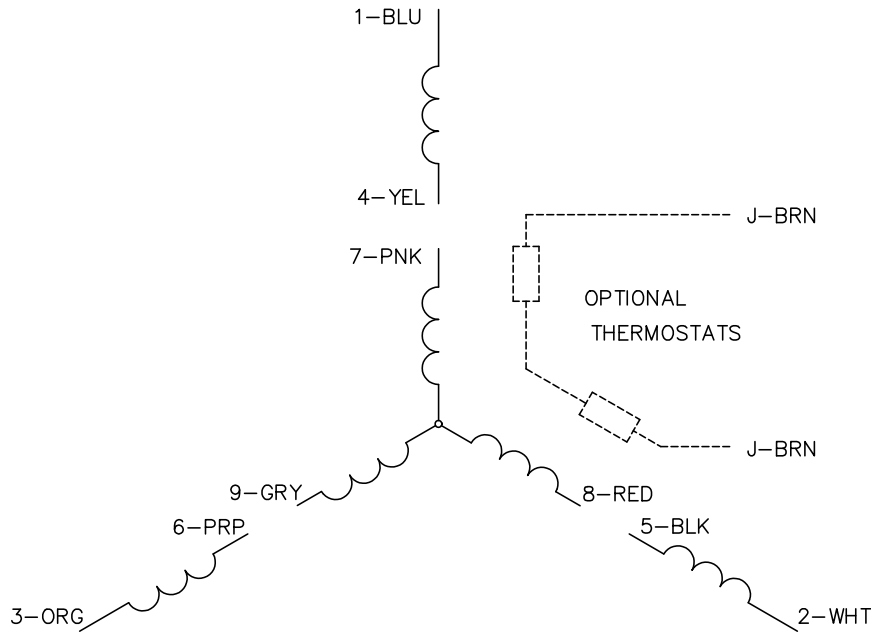
TORQUES (LB-FT): PO=31.2 PU=16.7 LR=19.9 LRA=20.9



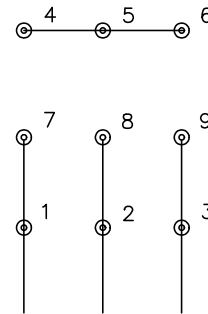
6/13/2024 ACPERF, record # 47054



CD0005

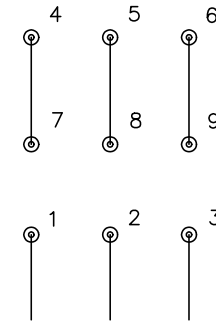


LOW VOLTAGE
(2Y)



LINE

HIGH VOLTAGE
(1Y)



LINE

NOTES:

1. INTERCHANGE ANY TWO LINE LEADS TO REVERSE ROTATION.
2. OPTIONAL THERMOSTATS ARE PROVIDED WHEN SPECIFIED.
3. ACTUAL NUMBER OF INTERNAL PARALLEL CIRCUITS MAY BE A MULTIPLE OF THOSE SHOWN ABOVE.
4. LEAD COLORS ARE OPTIONAL. LEADS MUST ALWAYS BE NUMBERED AS SHOWN.

CD0005

REV. DESC: REVISE TO SHOW OPTIONAL COLORS			
REV. LTR: E	BY: JLP	REVISED: 01/19/99 10:15	TDR: 0171435
S00000		FILE: AAA00005140	MDL: -
		MTL: -	

BALDOR ELECTRIC Co.

3PH, DV, 9 LEADS