



Customer information packet

CECP3661T

3HP, 1755RPM, 3PH, 60HZ, 182TC, 0632M, TEFC, F1

Class - CLI GP A,B,C,D

Division - Division II

Specifications

| | |
|--------------------------------|---|
| Enclosure | TEFC |
| Frame | 182TC |
| Frame Material | Iron |
| Frequency | 60.00 Hz |
| Motor Letter Type | Three Phase |
| Output @ Frequency | 3.000 HP @ 60 HZ |
| Phase | 3 |
| Synchronous Speed @ Frequency | 1800 RPM @ 60 HZ |
| Voltage @ Frequency | 230.0 V @ 60 HZ 208.0 V @ 60 HZ 460.0 V @ 60 HZ |
| XP Class and Group | CLI GP A,B,C,D |
| XP Division | Division II |
| Agency Approvals | CSA EEV NEMA PREMIUM NEMA_PREMIUM UR CCSA US |
| Ambient Temperature | 40 °C |
| Auxillary Box | No Auxillary Box |
| Auxillary Box Lead Termination | None |
| Base Indicator | Rigid |
| Bearing Grease Type | Polyrex EM (-20F +300F) |
| Blower | None |
| Constant Torque Speed Range | 1.5 |
| Current @ Voltage | 8.600 A @ 208.0 V 8.200 A @ 230.0 V 4.100 A @ 460.0 V |
| Design Code | B |
| Drip Cover | No Drip Cover |
| Duty Rating | CONT |
| Efficiency @ 100% Load | 89.5 % |

Part detail

| | |
|--------------|------------|
| Revision | T |
| Type | AC |
| Mech. spec. | 06H482 |
| Base | |
| Status | PRD/A |
| Elec. spec. | 06WGX181 |
| Layout | 06LYH482 |
| Eff. date | 11-11-2020 |
| CD Diagram | CD0005 |
| Poles | 04 |
| Leads | 9#16 |
| Proprietary | False |
| Created date | 09-22-2011 |

| | |
|-------------------------------|------------------------------|
| Electrically Isolated Bearing | Not Electrically Isolated |
| Enclosure Modification | Severe Duty Features |
| Feedback Device | NO FEEDBACK |
| Front Face Code | Standard |
| Front Shaft Indicator | None |
| Heater Indicator | No Heater |
| High Voltage Full Load Amps | 4.1 a |
| Insulation Class | F |
| Inverter Code | Inverter Duty |
| KVA Code | J |
| Lifting Lugs | Standard Lifting Lugs |
| Locked Bearing Indicator | Locked Bearing |
| Max Speed | 2700 rpm |
| Motor Lead Exit | Ko Box |
| Motor Lead Quantity/Wire Size | 9 @ 16 AWG |
| Motor Lead Termination | Flying Leads |
| Motor Standards | NEMA |
| Motor Type | 0632M |
| Mounting Arrangement | F1 |
| Number of Poles | 4 |
| Overall Length | 16.68 IN |
| Power Factor | 77 |
| Product Family | Chemical Processing (Not DC) |
| Pulley End Bearing Type | Ball |
| Pulley Face Code | C-Face |
| Pulley Shaft Indicator | Standard |
| Rodent Screen | None |
| Service Factor | 1.15 |
| Shaft Diameter | 1.125 IN |
| Shaft Extension Location | Pulley End |
| Shaft Ground Indicator | No Shaft Grounding |
| Shaft Rotation | Reversible |
| Shaft Slinger Indicator | Shaft Slinger |
| Speed | 1755 rpm |

| | |
|-----------------------------------|---------------------|
| Speed Code | Single Speed |
| Starting Method | Direct on line |
| Thermal Device - Bearing | None |
| Thermal Device - Winding | None |
| Vibration Sensor Indicator | No Vibration Sensor |
| Winding Thermal 1 | None |
| Winding Thermal 2 | None |
| XP Temp Code | T3C |

Nameplate

| NP3257 | | | | | | | |
|---------------------|--------------|-------------|------|------------|---|-----------|---|
| CAT.NO. | CECP3661T | | | | | | |
| SPEC. | 06H482X181G1 | | | | | | |
| HP | 3 TE | | | | | | |
| VOLTS | 208-230/460 | | | | | | |
| AMP | 8.6-8.2/4.1 | | | | | | |
| RPM | 1755 | | | | | | |
| FRAME | 182TC | HZ | 60 | PH | 3 | | |
| SER.F. | 1.15 | CODE | J | DES | B | CL | F |
| RATING | 40C AMB-CONT | | | | | | |
| SN | | | | | | | |
| DE | 6206 | ODE | 6206 | | | | |
| NEMA-NOM-EFF | 89.5 | PF | 77 | | | | |
| G.MIN.EFF | 87.5 | CC | 010A | | | | |
| T. CODE | T3C | T= | 160 | | | | |

| NP3260 | | | |
|--------------------|--------------|--------------------------------|------|
| SPEC. | 06H482X181G1 | | |
| D.E. BRG. | 30BC02XP30X | | |
| O.D.E. BRG. | 30BC02XP30X | | |
| GREASE | POLYREX EM | | |
| RPM MAX | 2700 | MAX. KVAR | 0.86 |
| BLANK | | | |
| INV.TYPE | PWM | | |
| T= | 160 | | |
| C HP FR | 60 | C HP TO | 90 |
| CT HZ FROM | 1.5 | CT HZ TO | 60 |
| VT HZ FROM | -0 | VT HZ TO | 60 |
| HTR-VOLTS | | HTR-AMPS | |
| HTR-WATTS | | MAX. SPACE HEATER TEMP. | |

AC Induction Motor Performance Data

Record # 46998

Typical performance - not guaranteed values

| Winding: 06WGX181-R047 | | Type: 0632M | | Enclosure: TEFC | |
|-------------------------------|-------------------|-------------------------|--|------------------------|--|
| Nameplate Data | | | 460 V, 60 Hz: High Voltage Connection | | |
| Rated Output (HP) | 3 | Full Load Torque | 9.06 LB-FT | | |
| Volts | 208-230/460 | Start Configuration | direct on line | | |
| Full Load Amps | 8.6-8.2/4.1 | Breakdown Torque | 33.1 LB-FT | | |
| R.P.M. | 1755 | Pull-up Torque | 18.2 LB-FT | | |
| Hz | 60 Phase | Locked-rotor Torque | 20.4 LB-FT | | |
| NEMA Design Code | B KVA Code | Starting Current | 29.8 A | | |
| Service Factor (S.F.) | 1.15 | No-load Current | 2.14 A | | |
| NEMA Nom. Eff. | 89.5 Power Factor | Line-line Res. @ 25°C | 3.92 Ω | | |
| Rating - Duty | 40C AMB-CONT | Temp. Rise @ Rated Load | 35°C | | |
| S.F. Amps | | Temp. Rise @ S.F. Load | 42°C | | |
| | | Rotor inertia | 0.298 LB-FT ² | | |

Load Characteristics 460 V, 60 Hz, 3 HP

| % of Rated Load | 25 | 50 | 75 | 100 | 125 | 150 | S.F. |
|------------------------|-----------|-----------|-----------|------------|------------|------------|-------------|
| Power Factor | 38 | 58 | 70 | 77 | 81 | 83 | 79 |
| Efficiency | 83.6 | 88.9 | 90.1 | 89.9 | 89.1 | 87.8 | 89.4 |
| Speed | 1789.5 | 1779.3 | 1768.8 | 1757 | 1744.4 | 1730 | 1749 |
| Line amperes | 2.34 | 2.79 | 3.39 | 4.1 | 4.91 | 5.86 | 4.59 |

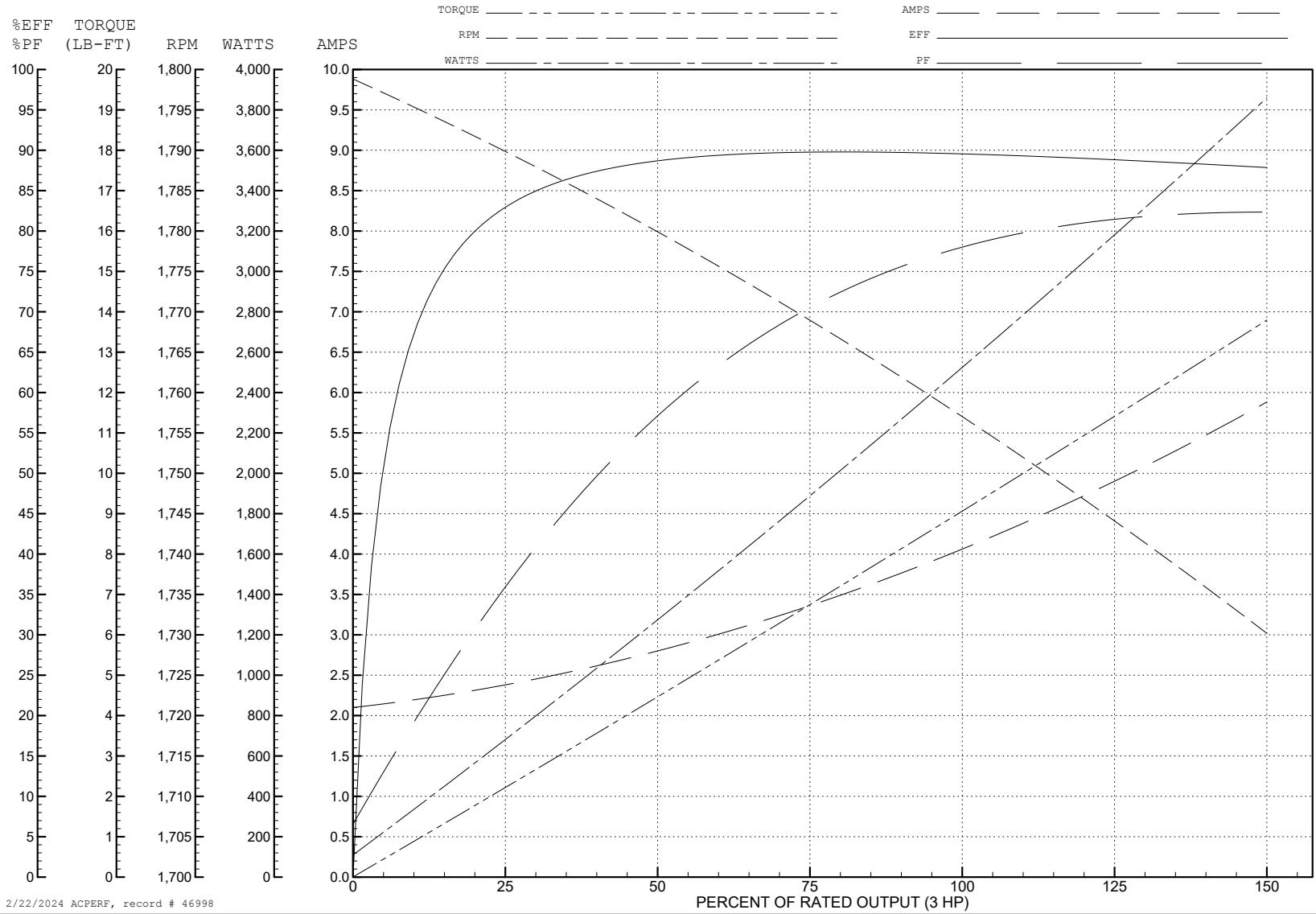
ABB Motors and Mechanical Inc.

WINDING # 06WGX181

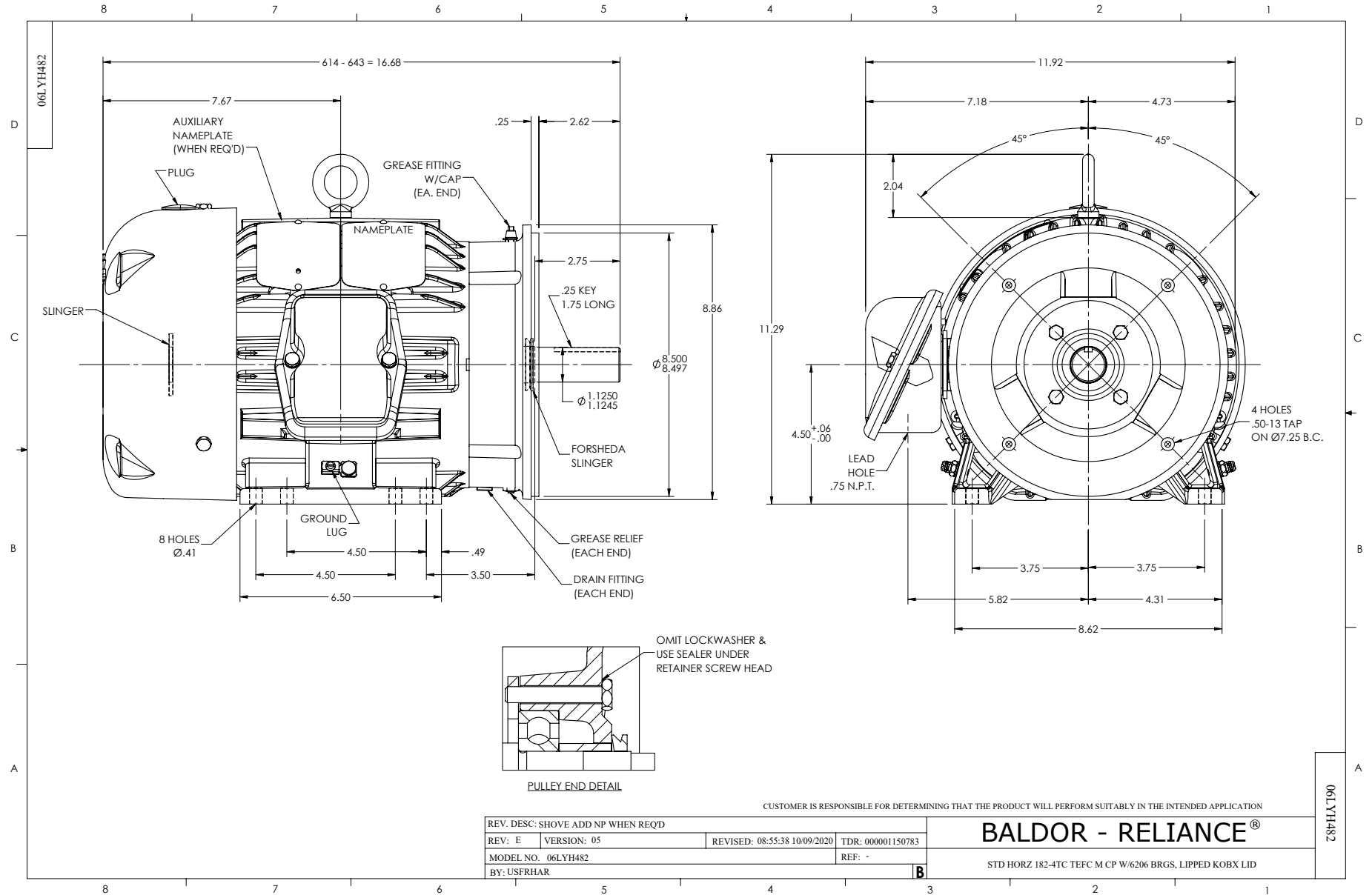
3 HP 3 PH 60 HZ 1755 RPM 460 V 0632M

Typical performance - not guaranteed values.

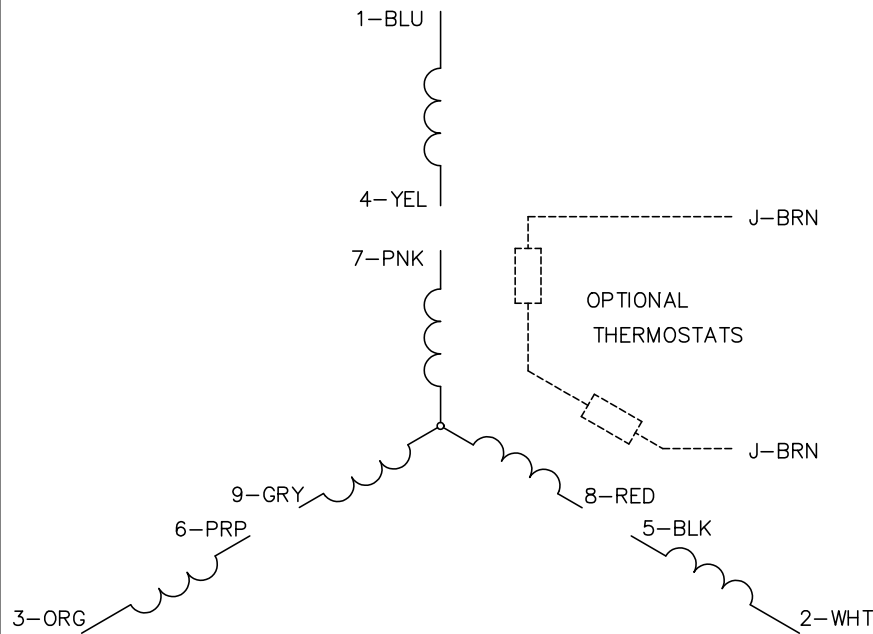
TORQUES (LB-FT): PO=33.1 PU=18.2 LR=20.4 LRA=29.8



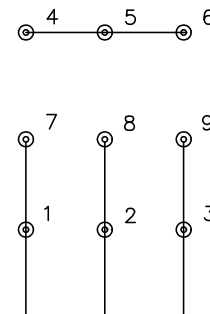
2/22/2024 ACPERF, record # 46998



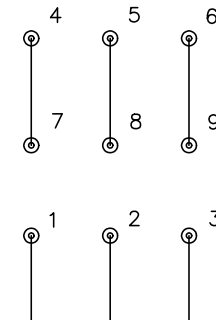
CD0005



LOW VOLTAGE
(2Y)



HIGH VOLTAGE
(1Y)



NOTES:

1. INTERCHANGE ANY TWO LINE LEADS TO REVERSE ROTATION.
2. OPTIONAL THERMOSTATS ARE PROVIDED WHEN SPECIFIED.
3. ACTUAL NUMBER OF INTERNAL PARALLEL CIRCUITS MAY BE A MULTIPLE OF THOSE SHOWN ABOVE.
4. LEAD COLORS ARE OPTIONAL. LEADS MUST ALWAYS BE NUMBERED AS SHOWN.

| | | | |
|---|---------|-------------------------|--------------|
| REV. DESC: REVISE TO SHOW OPTIONAL COLORS | | | |
| REV. LTR: E | BY: JLP | REVISED: 01/19/99 10:15 | TDR: 0171435 |
| S00000 | | FILE: AAA00005140 | MDL: - |
| | | MTL: - | |

BALDOR ELECTRIC Co.

3PH, DV, 9 LEADS

CD0005