



Customer information packet

CDX7100

1HP, 1750RPM, DC, 182C, X3623D, XPFC, F1

Class - CLI GP D; CLII GP F,G

Division -

Specifications

Armature Voltage	180 V
Base Speed	1750 rpm
Enclosure	XPFC
Field Voltage	100 V
	200 V
Frame	182C
Frame Material	Steel
Haz Area Class and Group	CLI GP D; CLII GP F,G
Output Power	1.000 HP
Agency Approvals	CSA
	UL
	UR
Ambient Temperature	40 °C
Armature Current	5.0 a
Armature Inertia	19.385 lb-ft ²
Base Indicator	Rigid
Bearing Grease Type	Polyrex EM (-20F +300F)
Drip Cover	No Drip Cover
Duty Rating	CONT
Feedback Device	NO FEEDBACK
Field Winding Type	SHUNT
Haz Area Temp Code	T3B
Heater Indicator	No Heater
Lifting Lugs	No Lifting Lugs
Motor Lead Exit	Ko Box
Motor Lead Quantity/Wire Size	2 @ 12 AWG
	4 @ 18 AWG
Motor Lead Termination	Flying Leads
Motor Standards	NEMA
Mounting Arrangement	F1
Overall Length	18.68 IN
Product Family	General Purpose

Part detail

Revision	AU
Type	DC
Mech. spec.	36-4687
Base	
Status	PRD/A
Elec. spec.	36WGZ110
Layout	36LY4687
Eff. date	04-15-2024
CD Diagram	CD0860C01
Poles	00
Leads	
Proprietary	False
Created date	01-01-0001

Pulley End Bearing Type	Sealed Bearing
Service Factor	1.00
Shaft Diameter	0.875 IN
Shaft Extension Location	Pulley End
Shaft Ground Indicator	No Shaft Grounding
Shaft Rotation	Reversible
Shaft Slinger Indicator	No Slinger

Nameplate

NP0727XPSL			
NO.			
SER.			
SPEC.	36-4687Z110		
CAT.NO.	CDX7100	T. CODE	T3B
HP	1	ENCL	XPFC
RPM	1750		
FRAME	182C	TYPE	3623D
ARM V	180	ARM A	5
FLD V	200/100	FLD A	.25/.5
INSUL	A	AMB.	40
DUTY	CONT	SUPPLY	K
BRG/DE	BG6206	BRG/ODE	BG6205
BRUSHES	2/BP5125A01		
BLANK			

DC Motor Performance Data

Record # 2271

Typical performance - not guaranteed values

Winding: 36WGZ110-R005		Type: 3623D	Enclosure: XPFC
Nameplate Data		General Characteristics	
Rated Output (HP)	1	Armature Resistance @ 25°C	1.7818 Ω
R.P.M.	1750	Commutating Winding Resistance @ 25°C	0.9431 Ω
Armature Volts	180		
Armature Amps	5	Shunt Winding Resistance @ 25°C	364.759 Ω
Field Volts	200 / 100		
Field Amps	0.25 / 0.5		
Rating - Duty	40C AMB-CONT		
Power Supply Code	K		

Load Characteristics at 180 Armature Volts, 200 Field Volts, 0.27 Field Amps

Load Point	1	2	3	4	5	6	7
Armature Amps	0.3	2.2	3.3	4.4	5.5	6.7	9.7
R.P.M.	1708	1656	1625	1600	1590	1580	1594
Torque (LB-FT)	0	1.5	2.25	3	3.75	4.5	6

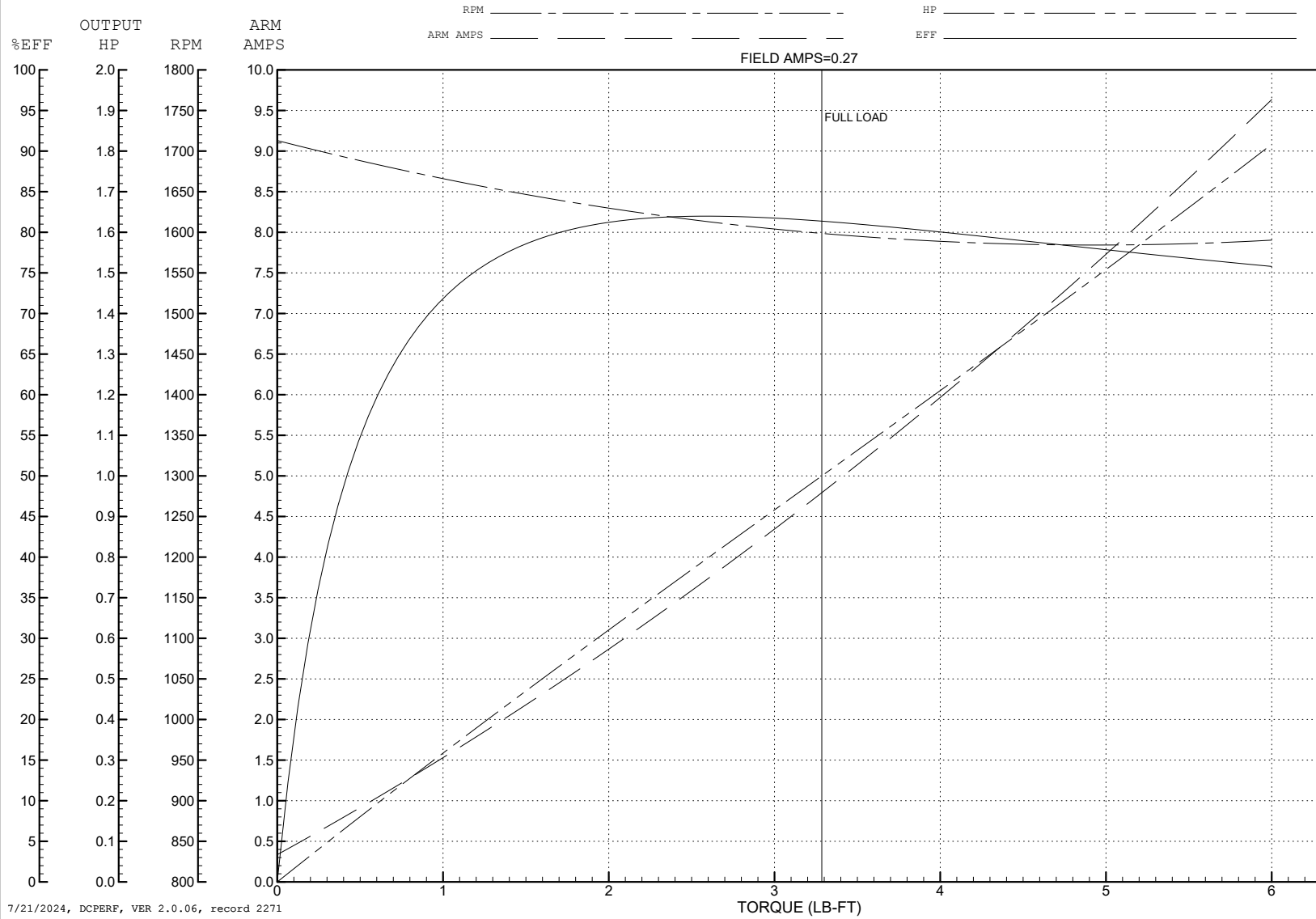
ABB Motors and Mechanical Inc.

WINDING # 36WGZ110

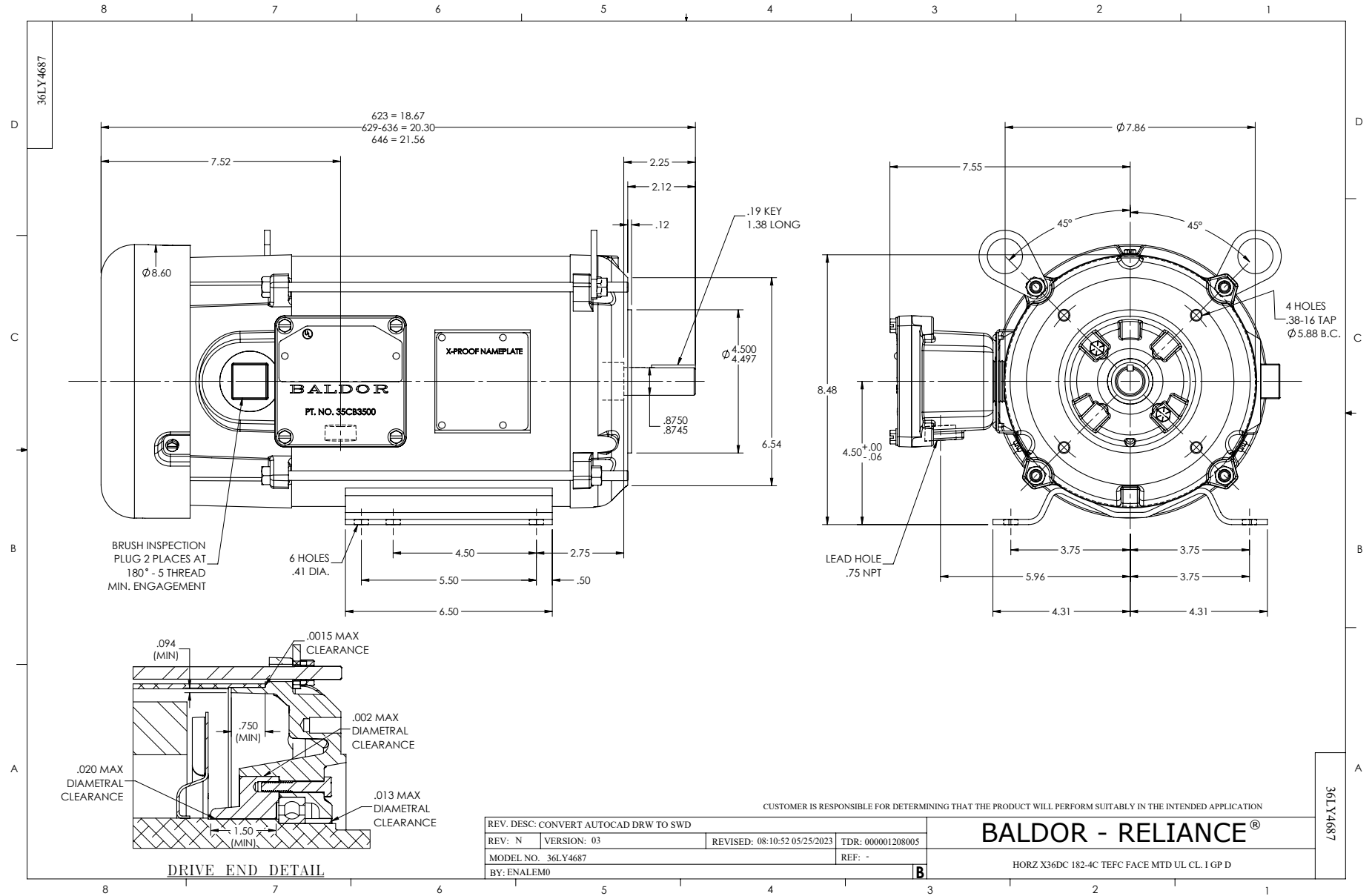
Typical performance - not guaranteed values.

1 HP DC 1750 RPM 180 V ARM 200/100 V FLD 3623D

ENCL: XPFC DUTY: CONT CL: A

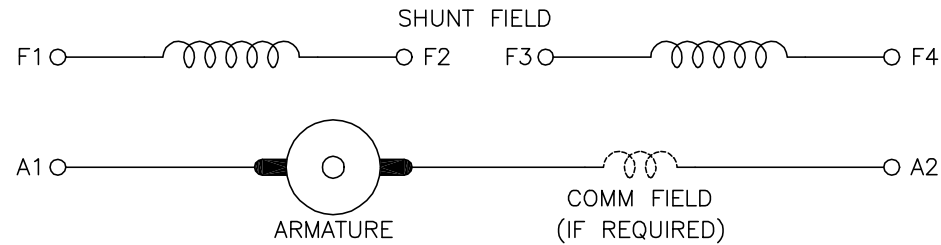


7/21/2024, DCPERF, VER 2.0.06, record 2271



CD0860C01

SHUNT WOUND



CONNECTION	DIRECTION OF ROTATION			
	CWDE		CCWDE	
	POS TERM (+)	NEG TERM (-)	POS TERM (+)	NEG TERM (-)
HIGH VOLTAGE	A1 F1 CONNECT F2 & F3	A2 F4	A2 F1 CONNECT F2 & F3	A1 F4
LOW VOLTAGE	A1 F1 & F3	A2 F2 & F4	A2 F1 & F3	A1 F2 & F4

NOTES:

1. LIMIT STARTING INRUSH CURRENT TO NOT MORE THAN 3 TIMES RATED AMPERES BY ENERGIZING THE FULL SHUNT FIELD BEFORE BRINGING THE ARMATURE VOLTAGE UP SLOWLY OR IN STEPS.
2. OPTIONAL FIELD REOSTAT MAY BE CONNECTED IN SERIES WITH THE SHUNT FIELD.
3. OPTIONAL THERMOSTAT LEADS ARE MARKED J,J.

REV. DESC: NEW, REPLACE CD0860			
REV. LTR: -	BY: JLP	REVISED: 15:35:22 11/03/2004	TDR: 347796
100098000		FILE: AAA00121477	REF: CD0860C01
		MTL: -	

BALDOR ELECTRIC Co.

DC CONNECTION DIAGRAM, SHUNT FIELD, 6 LEAD, DUAL VOLTAGE

CD0860C01