

# ABB BALDOR RELIANCE III

---

## Customer information packet

### CDX1850

.5HP, 1750RPM, DC, 182CZ, X3623D, XPFC, F1

Class - CLI GP D; CLII GP F,G

Division -

**Specifications**

<b>Armature Voltage</b>	90 V
<b>Base Speed</b>	1750 rpm
<b>Enclosure</b>	XPFC
<b>Field Voltage</b>	100 V
	50 V
<b>Frame</b>	182CZ
<b>Frame Material</b>	Steel
<b>Haz Area Class and Group</b>	CLI GP D; CLII GP F,G
<b>Output Power</b>	0.500 HP
<b>Agency Approvals</b>	CSA
	UL
	UR
<b>Ambient Temperature</b>	40 °C
<b>Armature Current</b>	4.9 a
<b>Armature Inertia</b>	19.385 lb-ft <sup>2</sup>
<b>Base Indicator</b>	Rigid
<b>Bearing Grease Type</b>	Polyrex EM (-20F +300F)
<b>Drip Cover</b>	No Drip Cover
<b>Duty Rating</b>	CONT
<b>Feedback Device</b>	NO FEEDBACK
<b>Field Winding Type</b>	SHUNT
<b>Haz Area Temp Code</b>	T3B
<b>Heater Indicator</b>	No Heater
<b>Lifting Lugs</b>	No Lifting Lugs
<b>Motor Lead Exit</b>	Ko Box
<b>Motor Lead Quantity/Wire Size</b>	2 @ 16 AWG
	4 @ 18 AWG
<b>Motor Lead Termination</b>	Flying Leads
<b>Motor Standards</b>	NEMA
<b>Mounting Arrangement</b>	F1
<b>Overall Length</b>	18.61 IN
<b>Product Family</b>	Hazardous Location Motor

**Part Detail**

<b>Revision</b>	AW
<b>Type</b>	DC
<b>Mech. spec.</b>	36-5382
<b>Base</b>	
<b>Status</b>	PRD/A
<b>Elec. spec.</b>	36WGZ141
<b>Layout</b>	36LY5382
<b>Eff. date</b>	12-30-2024
<b>CD Diagram</b>	CD0860C01
<b>Poles</b>	00
<b>Leads</b>	
<b>Proprietary</b>	False
<b>Created date</b>	01-01-0001

<b>Pulley End Bearing Type</b>	Sealed Bearing
<b>Service Factor</b>	1.00
<b>Shaft Diameter</b>	0.625 IN
<b>Shaft Extension Location</b>	Pulley End
<b>Shaft Ground Indicator</b>	No Shaft Grounding
<b>Shaft Rotation</b>	Reversible
<b>Shaft Slinger Indicator</b>	No Slinger

**Nameplate**

<b>NP0727XPSL</b>			
<b>NO.</b>			
<b>SER.</b>			
<b>SPEC.</b>	36-5382Z141		
<b>CAT.NO.</b>	CDX1850	<b>T. CODE</b>	T3B
<b>HP</b>	.5	<b>ENCL</b>	XPFC
<b>RPM</b>	1750		
<b>FRAME</b>	182CZ	<b>TYPE</b>	3623D
<b>ARM V</b>	90	<b>ARM A</b>	4.9
<b>FLD V</b>	100/50	<b>FLD A</b>	.55/1.1
<b>INSUL</b>	A	<b>AMB.</b>	40
<b>DUTY</b>	CONT	<b>SUPPLY</b>	K
<b>BRG/DE</b>	BG6206	<b>BRG/ODE</b>	BG6205
<b>BRUSHES</b>	2/BP5125A01		
<b>BLANK</b>			

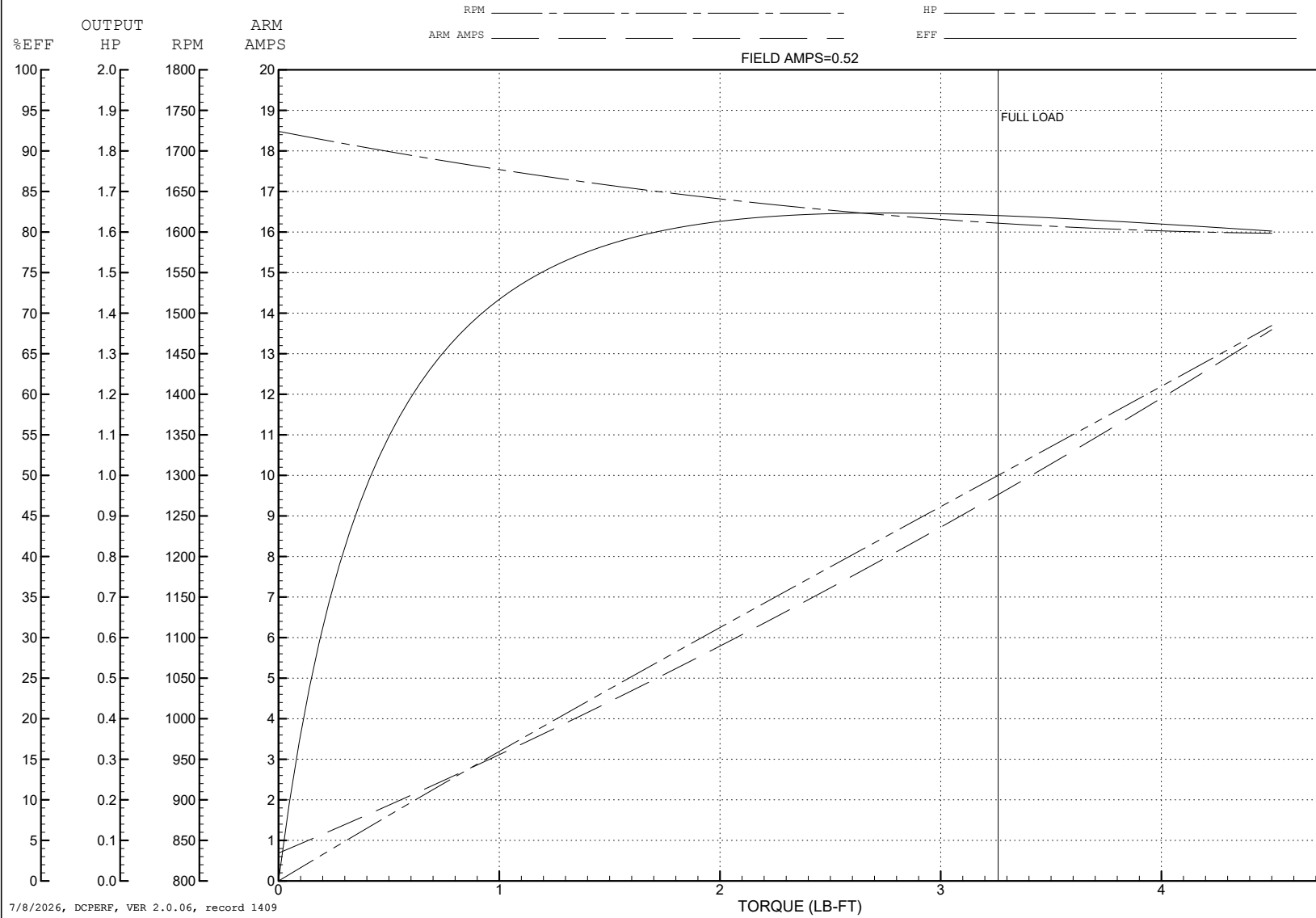
ABB Motors and Mechanical Inc.

WINDING # 36WGZ141

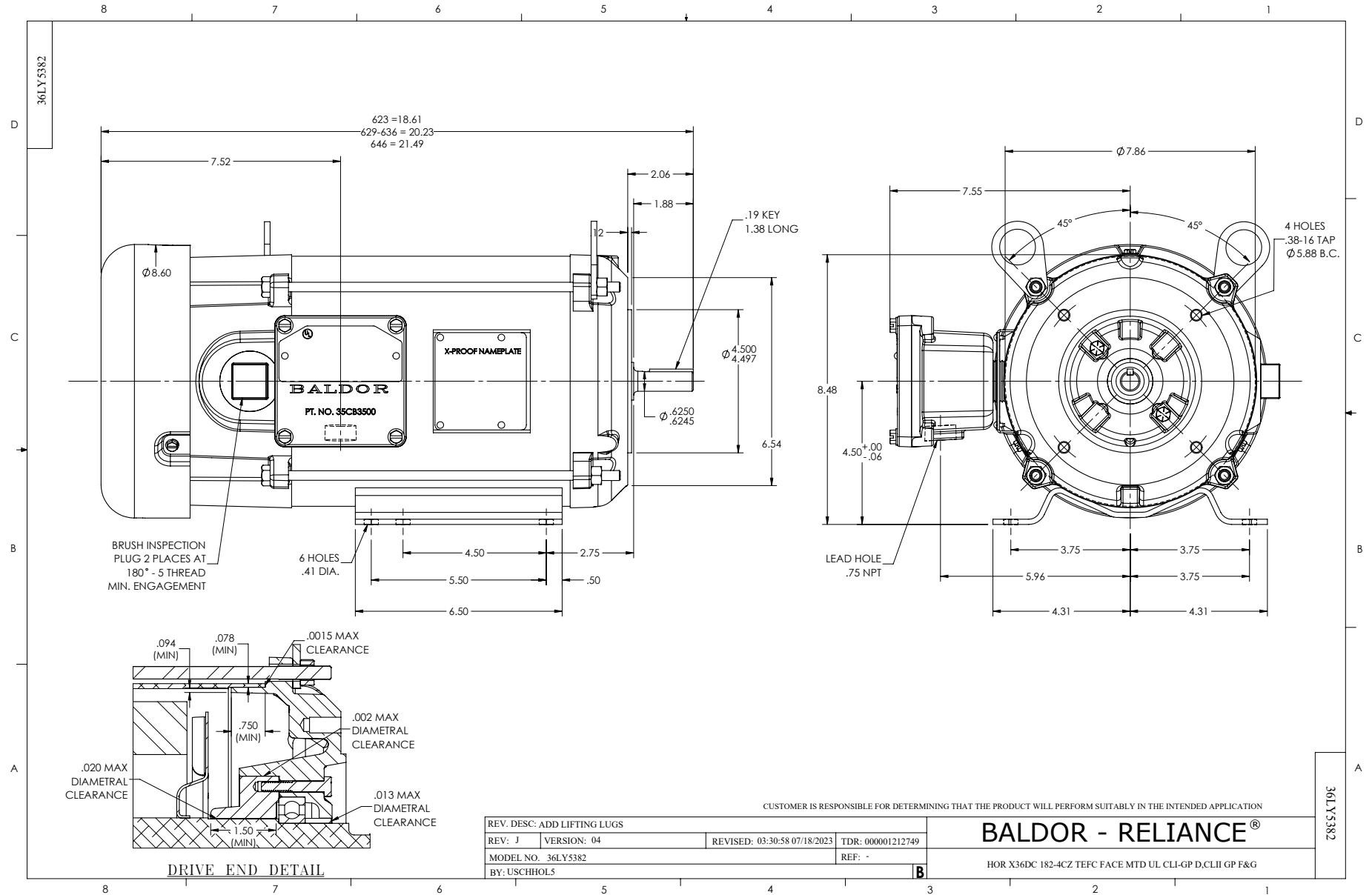
0.5 HP DC 1750 RPM 90 V ARM 100/50 V FLD 3623D

Typical performance - not guaranteed values.

ENCL: XPFC DUTY: CONT CL: A

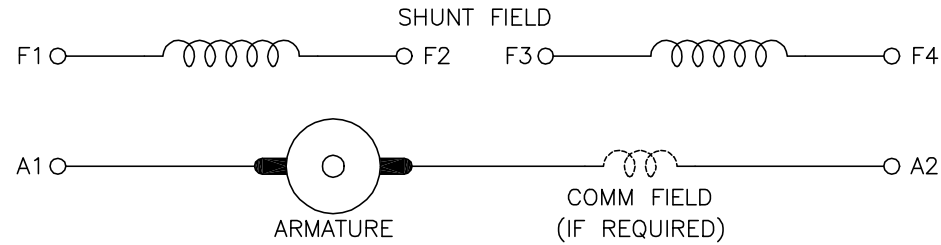


7/8/2026, DCPERF, VER 2.0.06, record 1409



CD0860C01

# SHUNT WOUND



CONNECTION	DIRECTION OF ROTATION			
	CWDE		CCWDE	
	POS TERM (+)	NEG TERM (-)	POS TERM (+)	NEG TERM (-)
HIGH VOLTAGE	A1 F1 CONNECT F2 & F3	A2 F4	A2 F1 CONNECT F2 & F3	A1 F4
LOW VOLTAGE	A1 F1 & F3	A2 F2 & F4	A2 F1 & F3	A1 F2 & F4

**NOTES:**

1. LIMIT STARTING INRUSH CURRENT TO NOT MORE THAN 3 TIMES RATED AMPERES BY ENERGIZING THE FULL SHUNT FIELD BEFORE BRINGING THE ARMATURE VOLTAGE UP SLOWLY OR IN STEPS.
2. OPTIONAL FIELD REOSTAT MAY BE CONNECTED IN SERIES WITH THE SHUNT FIELD.
3. OPTIONAL THERMOSTAT LEADS ARE MARKED J,J.

REV. DESC: NEW, REPLACE CD0860			
REV. LTR: -	BY: JLP	REVISED: 15:35:22 11/03/2004	TDR: 347796
100098000		FILE: AAA00121477	REF: CD0860C01
		MTL: -	

**BALDOR ELECTRIC Co.**

DC CONNECTION DIAGRAM, SHUNT FIELD, 6 LEAD, DUAL VOLTAGE

CD0860C01