

**BALDOR® • RELIANCE®**

---

# Customer information packet

## CDRXL05144

1HP, 1750RPM, 1PH, 60HZ, 56C, 3528L, XPFC, F1, N  
Class - CLI GP C,D  
Division - Division I

## Specifications

Enclosure	XPFC
Frame	56C
Frame Material	Steel
Frequency	60.00 Hz
Haz Area Class and Group	CLI GP C,D
Haz Area Division	Division I
Motor Letter Type	Cap Start, Induction Run
Output @ Frequency	1.000 HP @ 60 HZ
Phase	1
Synchronous Speed @ Frequency	1800 RPM @ 60 HZ
Voltage @ Frequency	115.0 V @ 60 HZ 230.0 V @ 60 HZ
Agency Approvals	UL CSA
Ambient Temperature	40 °C
Auxillary Box	No Auxillary Box
Auxillary Box Lead Termination	None
Base Indicator	Rigid
Bearing Grease Type	Polyrex EM (-20F +300F)
Blower	None
Current @ Voltage	12.400 A @ 115.0 V 6.200 A @ 230.0 V
Design Code	L
Drip Cover	No Drip Cover
Duty Rating	CONT
Efficiency @ 100% Load	68.0 %
Electrically Isolated Bearing	Not Electrically Isolated
Feedback Device	NO FEEDBACK
Front Shaft Indicator	None
Haz Area Temp Code	T3C
Heater Indicator	No Heater
High Voltage Full Load Amps	6.2 a

## Part detail

Revision	D
Type	AC
Mech. spec.	35X723
Base	
Status	PRD/A
Elec. spec.	35WGG376
Layout	35LYX723
Eff. date	08-15-2024
CD Diagram	CD0001
Poles	04
Leads	6#18
Proprietary	False
Created date	12-01-2022

Insulation Class	F
Inverter Code	Not Inverter
KVA Code	K
Lifting Lugs	No Lifting Lugs
Locked Bearing Indicator	Locked Bearing
Motor Lead Quantity/Wire Size	6 @ 18 AWG
Motor Lead Termination	Flying Leads
Motor Standards	NEMA
Motor Type	X3524L
Mounting Arrangement	F1
Number of Poles	4
Overall Length	15.16 IN
Power Factor	76
Product Family	Hazardous Location Motor
Pulley End Bearing Type	Ball
Pulley Face Code	C-Face
Pulley Shaft Indicator	Standard
Rodent Screen	None
Service Factor	1.00
Shaft Diameter	0.625 IN
Shaft Ground Indicator	No Shaft Grounding
Shaft Rotation	Reversible
Shaft Slinger Indicator	No Slinger
Speed	1725 rpm
Speed Code	Single Speed
Starting Method	Direct on line
Thermal Device - Bearing	None
Thermal Device - Winding	Normally Closed Thermostat
Vibration Sensor Indicator	No Vibration Sensor
Winding Thermal 1	None
Winding Thermal 2	None

**Nameplate**

NP0977XPSL											
<b>NO.</b>									<b>CC</b>		
<b>SER.</b>									<b>TEMP CODE</b>	T3C	
<b>SPEC.</b>	35X723G376G1										
<b>CAT.NO.</b>	CDRXL05144										
<b>HP</b>	1										
<b>VOLTS</b>	115/230										
<b>AMPS</b>	12.5/6.3										
<b>RPM</b>	1750				<b>MOTOR WEIGHT</b>						
<b>HERTZ</b>	60	<b>PH</b>	1	<b>CL</b>	F	<b>DE BRG</b>	6205				
<b>SER.F.</b>	1.00	<b>DES</b>	L	<b>CODE</b>	L	<b>ODE BRG</b>	6203				
<b>FRAME</b>	56C	<b>GREASE</b>	POLYREX EM								
<b>RATING</b>	40C AMB-CONT										
	<b>NEMA-NOM-EFF</b>							74	<b>PF</b>	69	

**AC Induction Motor Performance Data**

Record # 92086

Typical performance - not guaranteed values

Winding: 35WGG376-R004		Type: 3528L		Enclosure: XPFC	
<b>Nameplate Data</b>			<b>115 V, 60 Hz: Low Voltage Connection</b>		
Rated Output (HP)	1	Full Load Torque	3.01 LB-FT		
Volts	115/230	Start Configuration	direct on line		
Full Load Amps	12.5/6.3	Breakdown Torque	9.7 LB-FT		
R.P.M.	1750	Pull-up Torque	7.8 LB-FT		
Hz	60	Phase	1	Locked-rotor Torque	13.9 LB-FT
NEMA Design Code	L	KVA Code	L	Starting Current	85.3 A
Service Factor (S.F.)	1	No-load Current	9.53 A		
NEMA Nom. Eff.	74	Power Factor	69	Line-line Res. @ 25°C	0.525 Ω A Ph 1.17 Ω B Ph
Rating - Duty	40C AMB-CONT		Temp. Rise @ Rated Load	62°C	
			Locked-rotor Power Factor	94.8	
			Rotor inertia	0.203 lb-ft <sup>2</sup>	

**Load Characteristics 115 V, 60 Hz, 1 HP**

% of Rated Load	25	50	75	100	125	150
Power Factor	33	48	60	69	76	80
Efficiency	53.5	67.3	72.9	74.9	74.6	72.8
Speed	1786	1775	1763	1750	1735	1714
Line amperes	9.3	9.98	11.06	12.51	14.28	16.82

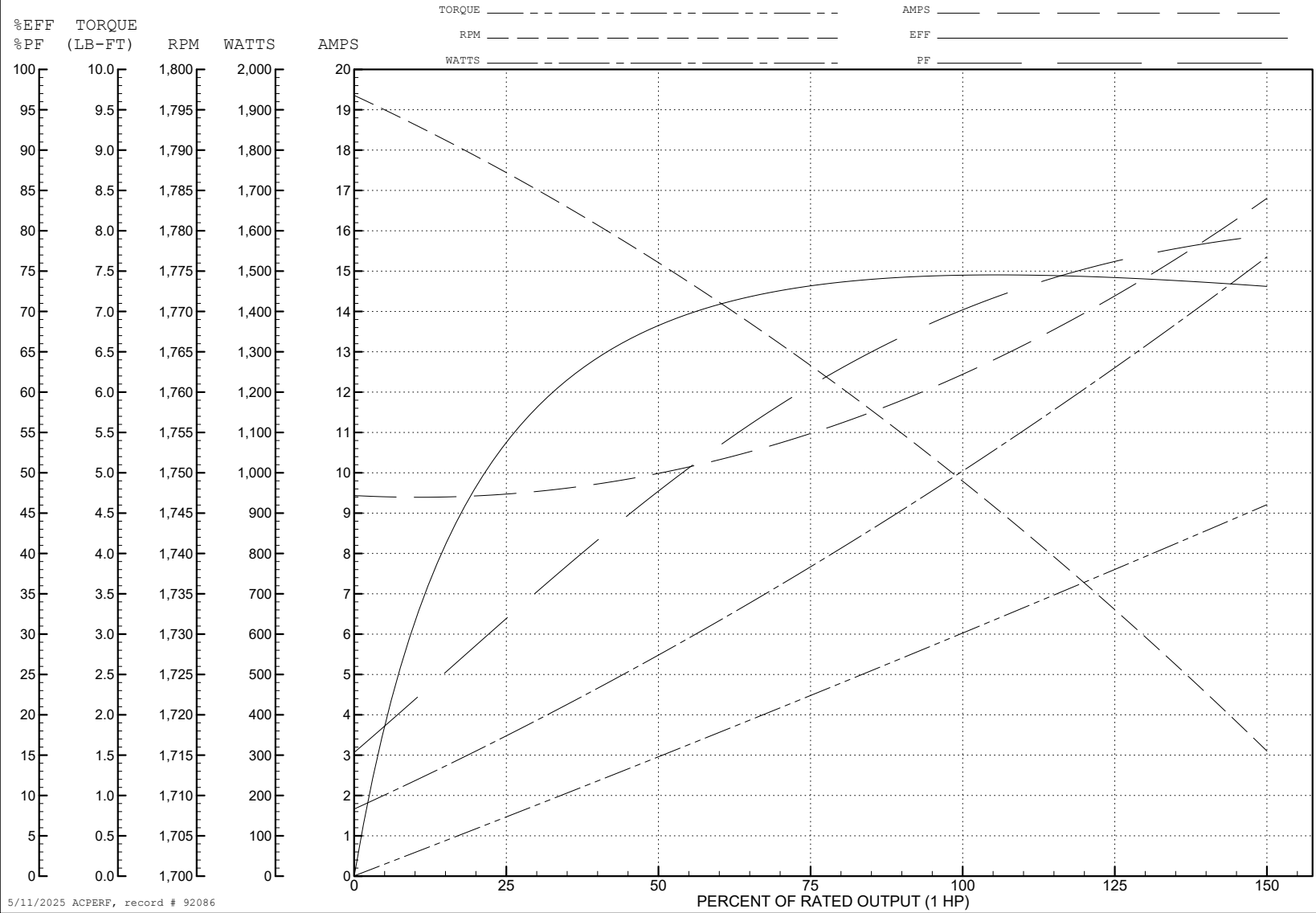
ABB Motors and Mechanical Inc.

WINDING # 35WGG376

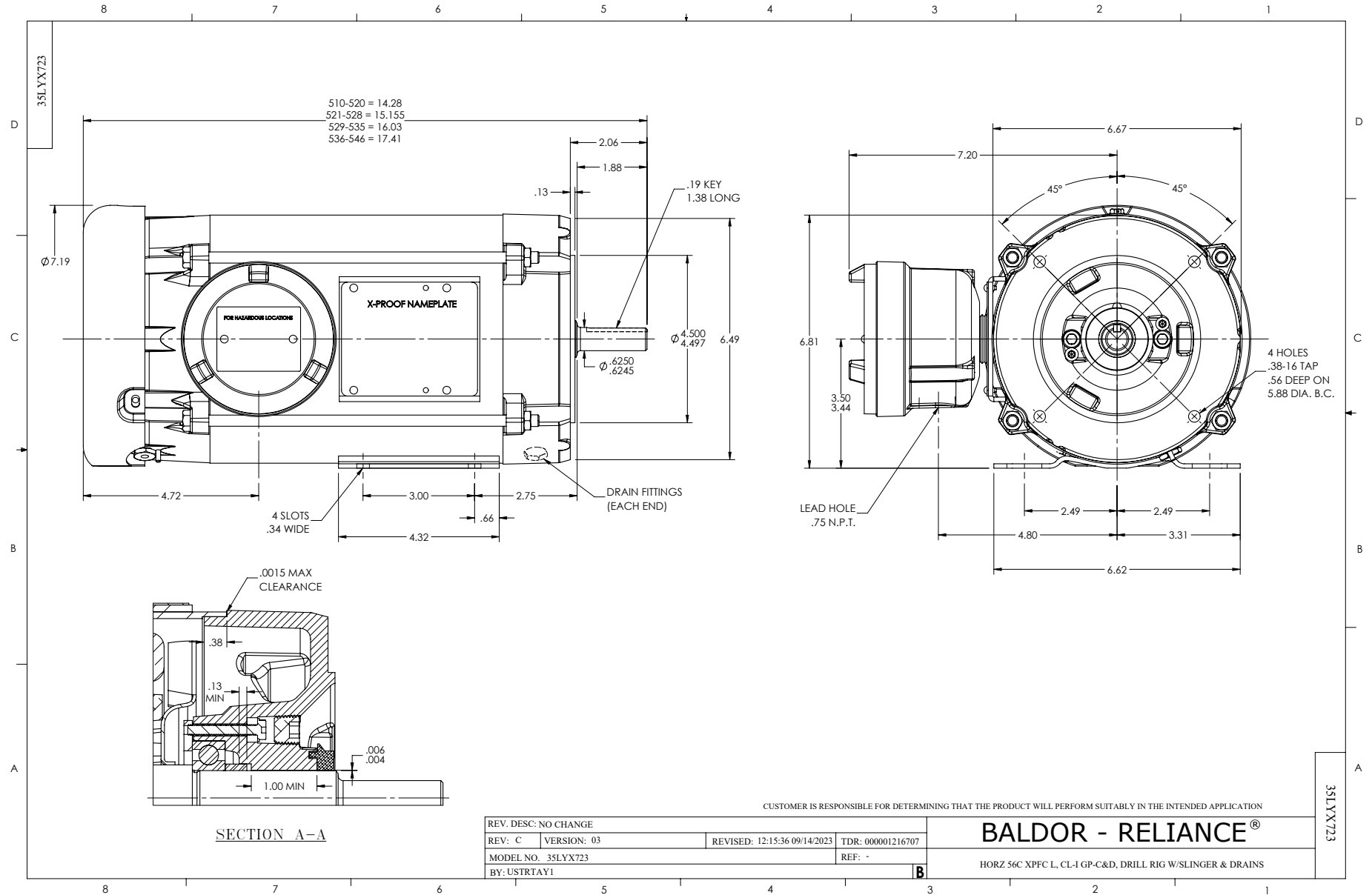
Typical performance - not guaranteed values.

1 HP 1 PH 60 HZ 1750 RPM 115 V 3528L

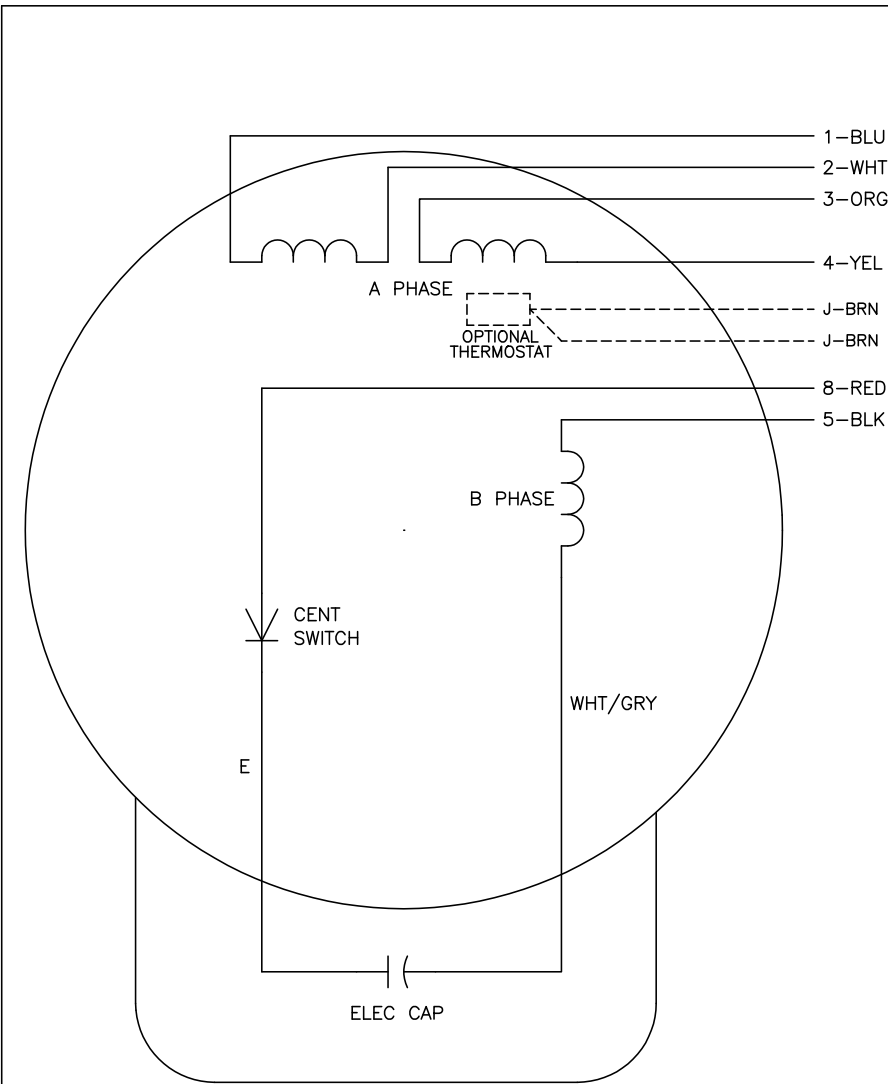
TORQUES (LB-FT): PO=9.7 PU=7.8 LR=13.9 LRA=85.3



5/11/2025 ACPERF, record # 92086



CD0001



	LINE A	LINE B	JOIN
HIGH STD	1	4,5	2,3,8
HIGH OPP	1	4,8	2,3,5
LOW STD	1,3,8	2,4,5	-
LOW OPP	1,3,5	2,4,8	-

NOTES:

1. STANDARD ROTATION IS CCW FACING END OPPOSITE SHAFT EXTENSION.
2. OPTIONAL THERMOSTAT IS PROVIDED WHEN SPECIFIED.
3. MULTIPLE CAPACITORS ARE CONNECTED IN PARALLEL UNLESS OTHERWISE SPECIFIED.
4. LEAD COLORS ARE OPTIONAL. LEADS MUST ALWAYS BE NUMBERED AS SHOWN.

REV. DESC: REVISE TO SHOW OPTIONAL COLORS			
REV. LTR: D	BY: JLP	REVISED: 04/08/99 1:16	TDR: 0178636
100000		FILE: AAA00007405	MDL: -
		MTL: -	

**BALDOR ELECTRIC Co.**

TYPE L, DV, REV, 6 LEADS

CD0001