

DUTY MASTER ALTERNATING CURRENT MOTORS
SQUIRREL-CAGE INDUCTION

617428-725

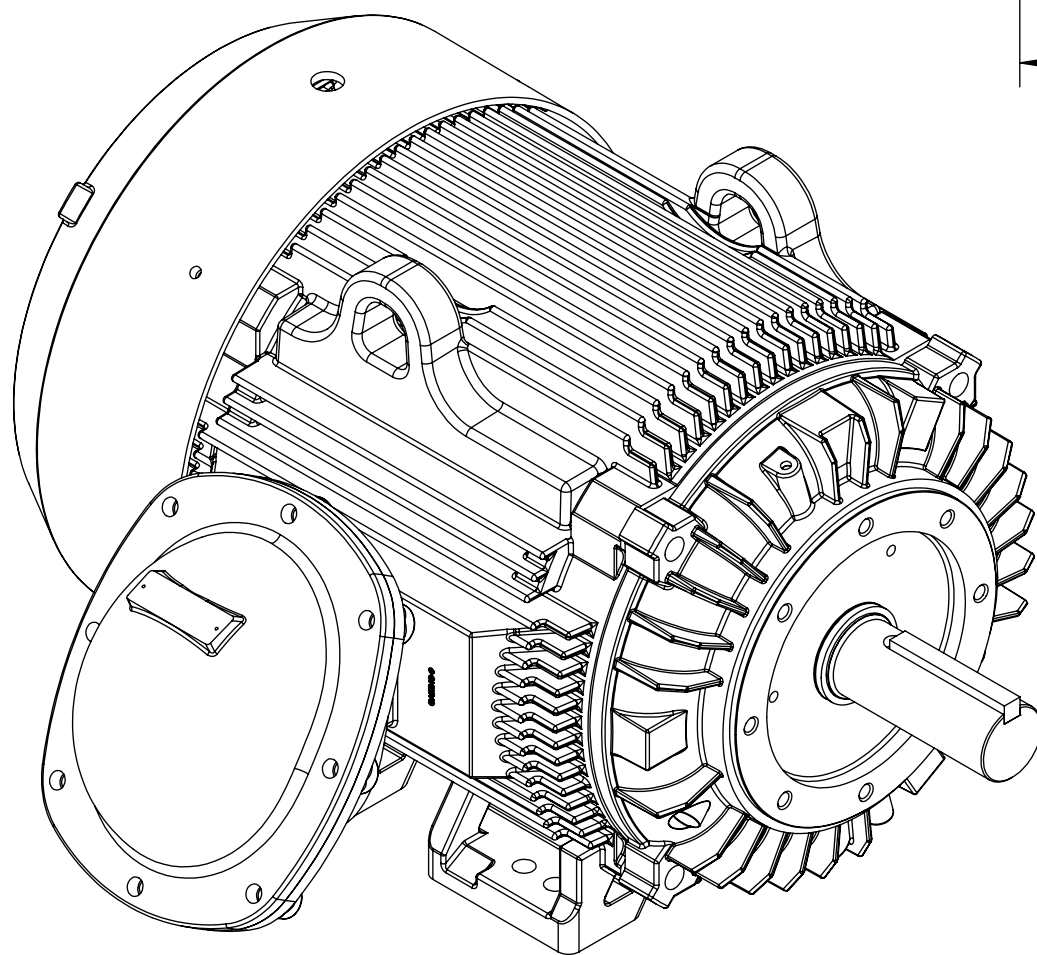
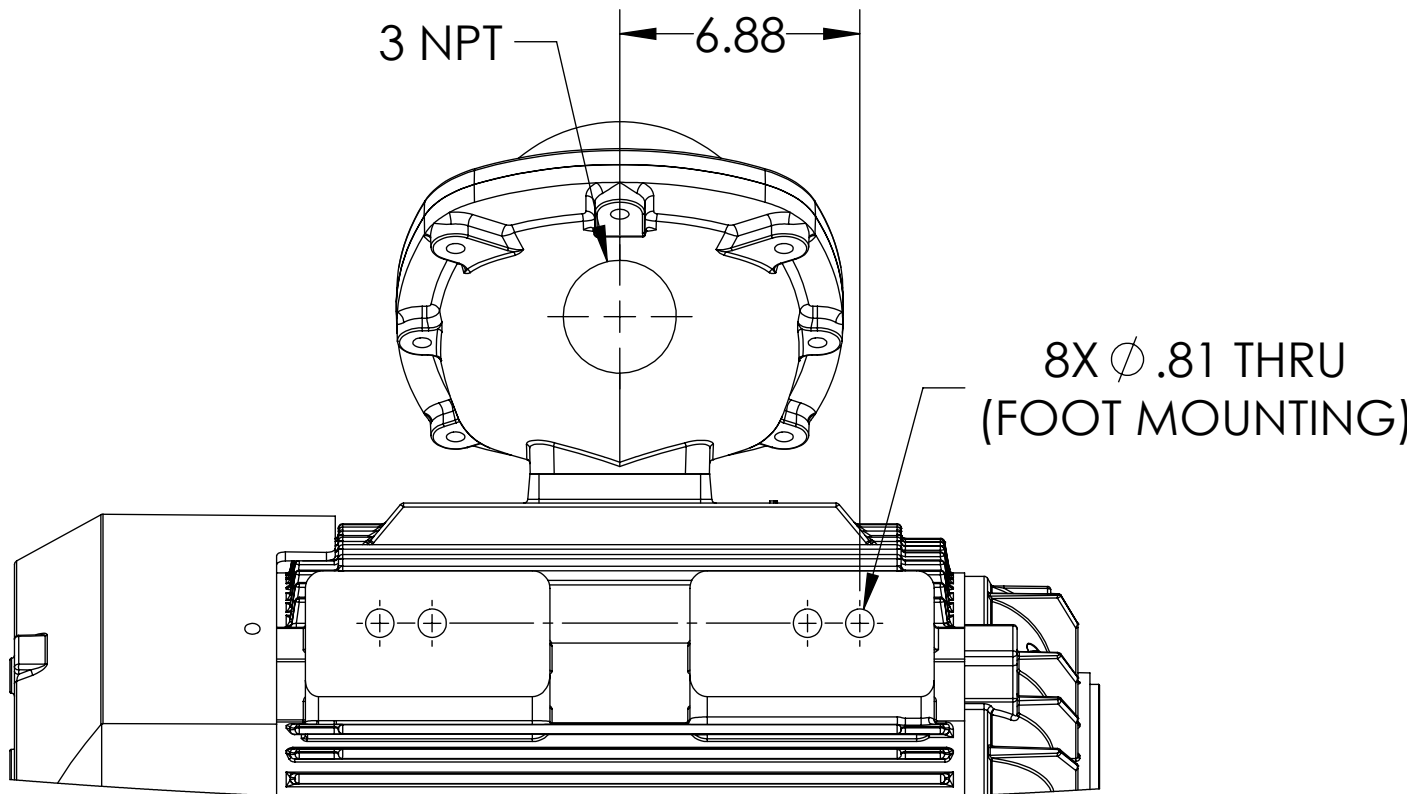
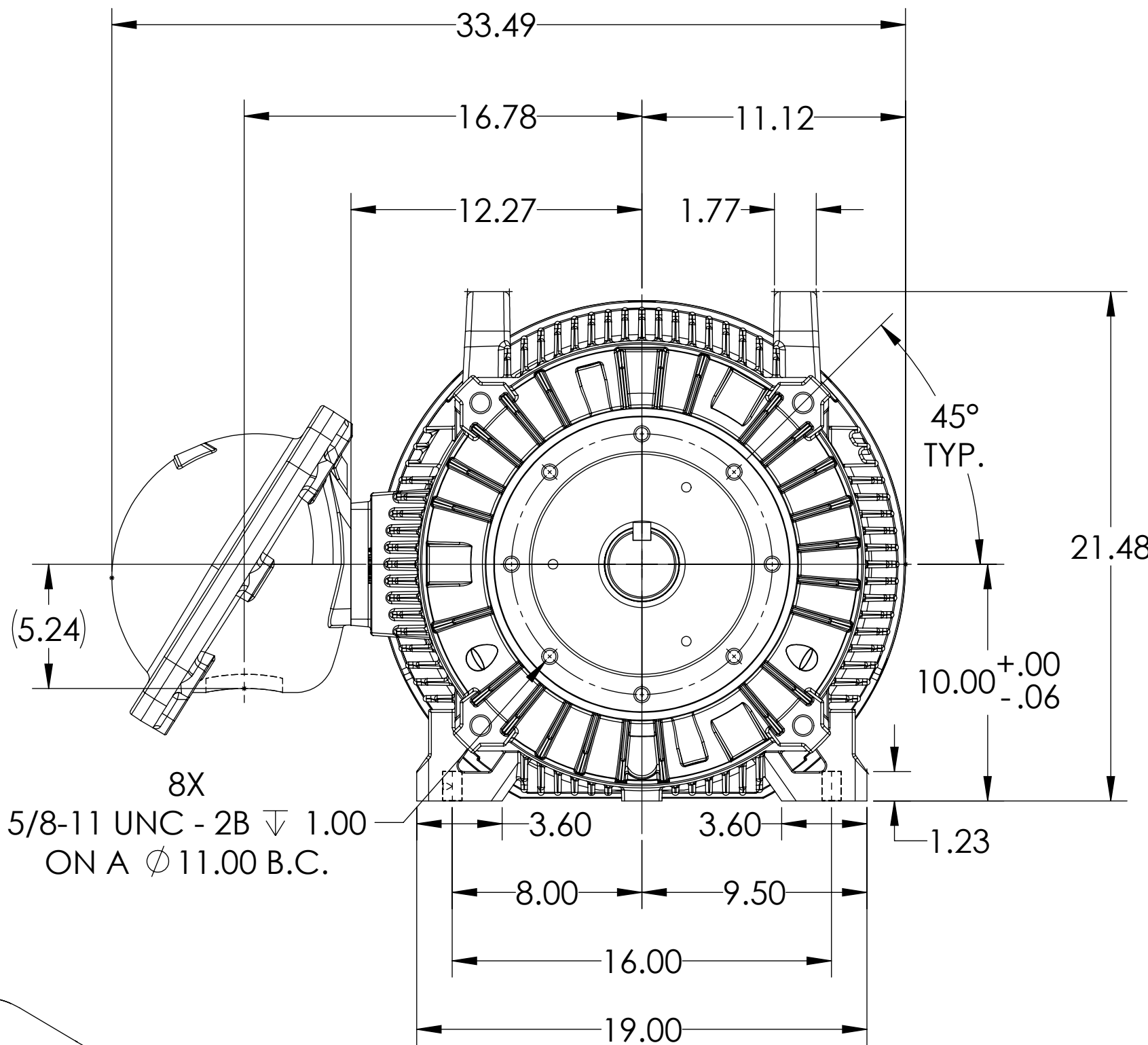
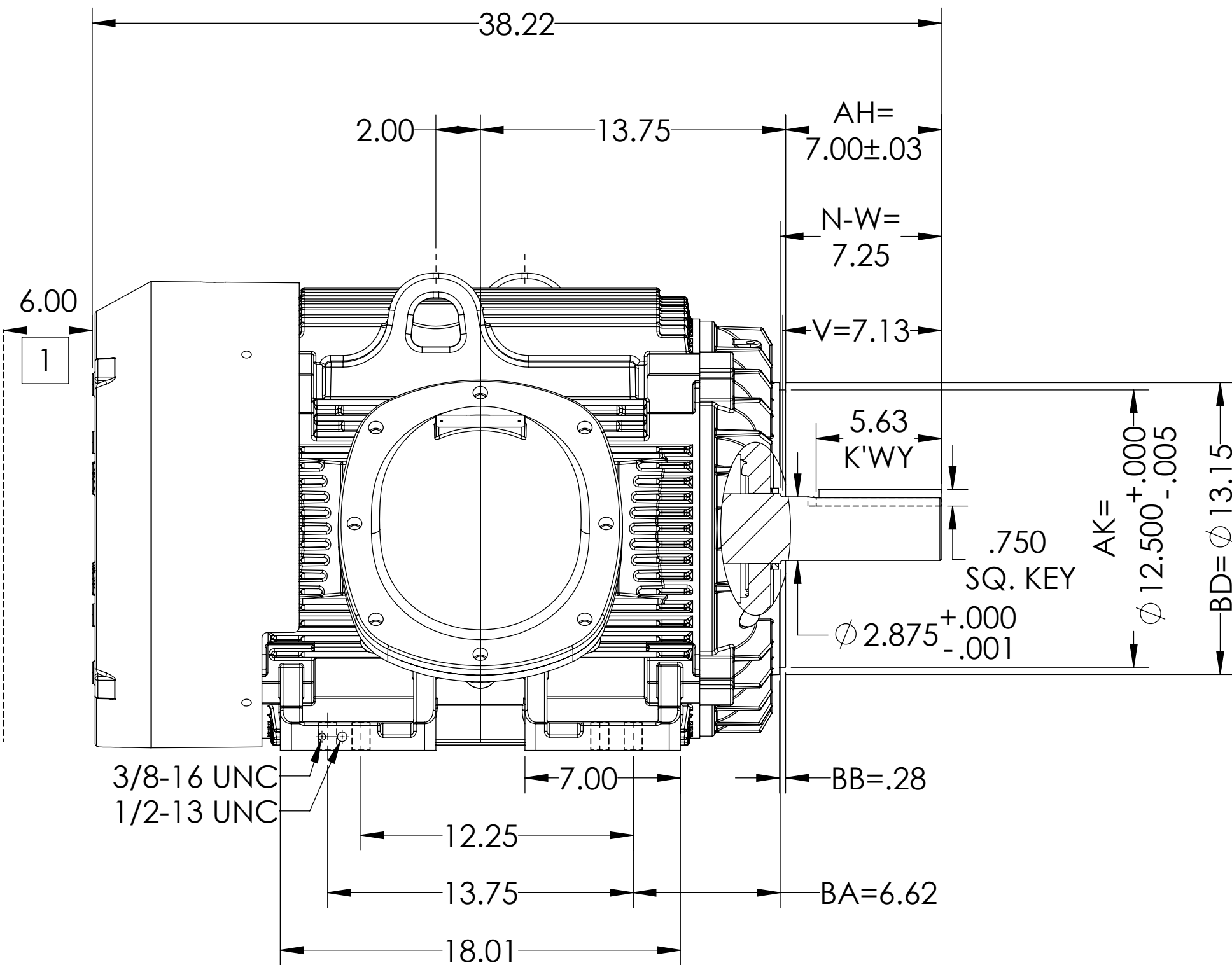
ENCLOSURE: UNDERWRITERS LISTED

MOUNTING: FOOT, F-1

G405T/G404T FRAME MOUNTING HOLES

COOLING: FAN COOLED

GROUP C & D



DIMENSIONS ARE IN INCHES.
MAX FACE RUNOUT & ECCENTRICITY = .007 T.I.R.
CUSTOMER IS RESPONSIBLE FOR DETERMINING THAT MOTOR PERFORMANCE IS SUITABLE IN THE APPLICATION.

REV. DESC: NEW DRAWING			
REV: -	VERSION: 00	REVISED: 09:51:05 05/22/2019	TDR: 000001109207
MODEL NO. 617428-725			REF:
BY: USJEDIL		Material:	C

BALDOR

G405/404TC XP TEFC F1 FOOT CAST IRON CONDUIT BOX/GROUP C&D

1 OBSTRUCTION MUST NOT ENCROACH ON AIR INLET.

IF MOUNTING CLEARANCE DETAILS ARE REQUIRED, CONSULT FACTORY.
WEIGHT (LBS): 1400, MOTOR WEIGHTS MAY VARY BY 15% DEPENDING ON RATING.
MAX PERMISSIBLE SHAFT RUNOUT WHEN MEASURED AT END OF STANDARD SHAFT EXTENSION IS .003" T.I.R.

SHEET NUMBER
1 OF 1

617428-725

617428-725