



---

# Customer information packet

## CDRX36744T

75HP, 1780RPM, 3PH, 60HZ, 365TC, TEFC, F1

Class - CLI GP C,D

Division - Division I

## Specifications

Enclosure	TEFC
Frame	365TC
Frame Material	Iron
Frequency	60.00 Hz
Haz Area Class and Group	CLI GP C,D
Haz Area Division	Division I
Motor Letter Type	Three Phase
Output @ Frequency	75.000 HP @ 60 HZ
Phase	3
Synchronous Speed @ Frequency	1800 RPM @ 60 HZ
Voltage @ Frequency	230.0 V @ 60 HZ 460.0 V @ 60 HZ
Agency Approvals	CCSAUSEEV CSA UL
Ambient Temperature	40 °C
Auxillary Box	No Auxillary Box
Base Indicator	Rigid
Bearing Grease Type	Polyrex EM (-20F +300F)
Constant Torque Speed Range	10-60
Current @ Voltage	172.000 A @ 230.0 V 85.900 A @ 460.0 V
Design Code	B
Drip Cover	No Drip Cover
Duty Rating	CONT
Efficiency @ 100% Load	95.4 %
Feedback Device	NO FEEDBACK
Haz Area Temp Code	T3C
Heater Indicator	No Heater
High Voltage Full Load Amps	85.9 a
Insulation Class	F
Inverter Code	Inverter Ready

## Part detail

Revision	A
Type	AC
Mech. spec.	
Base	
Status	PRD/A
Elec. spec.	A36WG1512
Layout	611742-780
Eff. date	02-08-2021
CD Diagram	416820-002
Poles	04
Leads	3#4,6#6
Proprietary	False
Created date	05-29-2019

<b>IP Rating</b>	NONE
<b>KVA Code</b>	G
<b>Lifting Lugs</b>	Standard Lifting Lugs
<b>Max Speed</b>	3600 rpm
<b>Motor Lead Quantity/Wire Size</b>	3 @ 4 AWG
<b>Motor Standards</b>	NEMA
<b>Motor Type</b>	A36070M
<b>Mounting Arrangement</b>	F1
<b>Number of Poles</b>	4
<b>Overall Length</b>	33.45 IN
<b>Power Factor</b>	86
<b>Product Family</b>	General Industrial
<b>Pulley End Bearing Type</b>	Ball
<b>Pulley Face Code</b>	C-Face
<b>Service Factor</b>	1.00
<b>Shaft Diameter</b>	2.374 IN
<b>Shaft Ground Indicator</b>	No Shaft Grounding
<b>Shaft Rotation</b>	Reversible
<b>Shaft Slinger Indicator</b>	Shaft Slinger
<b>Speed</b>	1780 rpm
<b>Speed Code</b>	Single Speed
<b>Starting Method</b>	Direct on line
<b>Thermal Device - Bearing</b>	None
<b>Thermal Device - Winding</b>	Normally Closed Thermostat

**Nameplate**

<b>NP2496L</b>	
MOBIL POLYREX EM	

---

**000692000FX**

---



---

---

**000613006PC**

---

**CLASS I GROUP** C D X **NO.****CLASS II GROUP** X X X**OPERATING TEMP CODE** T3C

---

**NP3140L**

<b>SPEC NO.</b>	A36-7740-1512	<b>CAT.NO.</b>	CDRX36744T			<b>FRAME</b>	365TC
<b>HP</b>	75	<b>VOLTS</b>	230/460		<b>PHASE</b>	3	<b>DESIGN</b> B <b>TYPE</b> P
<b>RPM</b>	1780	<b>AMPS</b>	172/85.9		<b>HZ</b>	60	<b>AMB</b> 40 <b>SF</b> 1.00
<b>DRIVE END BEARING</b>	65BC03J30X		<b>DUTY</b>	CONT	<b>INSUL.CLASS</b>	F	
<b>OPP D.E. BEARING</b>	65BC03J30X		<b>ENCL</b>	TEFC	<b>CODE</b>	G	
<b>SF</b>	1.15	<b>WK2</b>	14.02	<b>MAG CUR</b>	52.2/26.1		<b>RPM MAX</b> 3600
<b>CT HZ</b>	10-60	<b>VT HZ</b>	0-60	<b>CHP HZ</b>	60-90		<b>NEMA-NOM-EFF</b> 95.4
	SUIT FOR 55C AMB AT 1.00 SF				IP55		
<b>SER.NO.</b>				<b>MOTOR WEIGHT</b>			









611742-780

ENCLOSURE: TOTALLY ENCLOSED

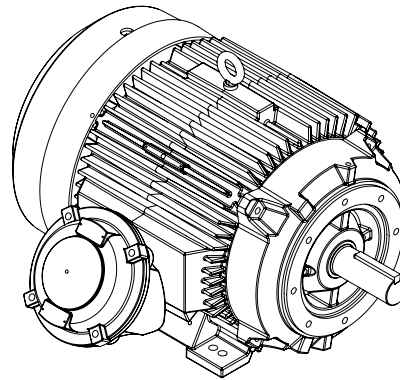
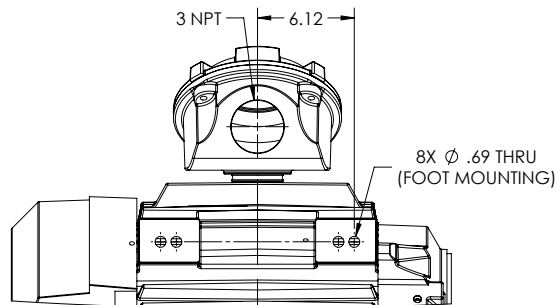
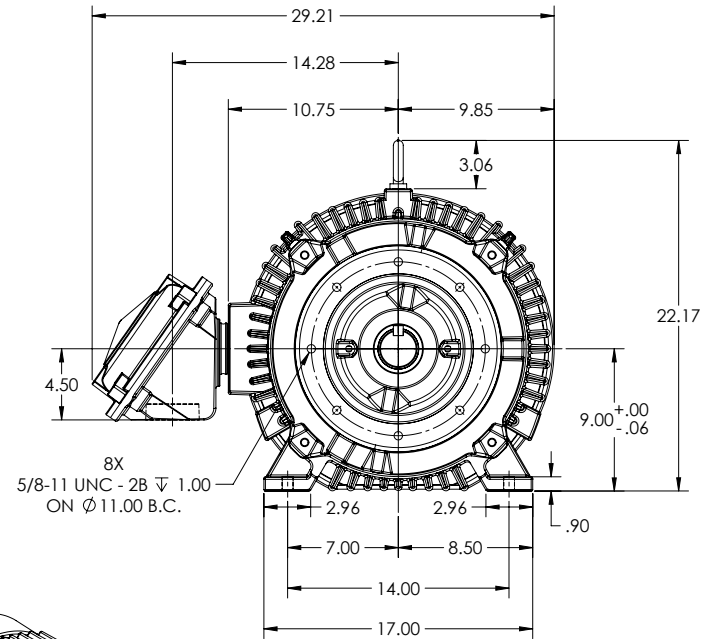
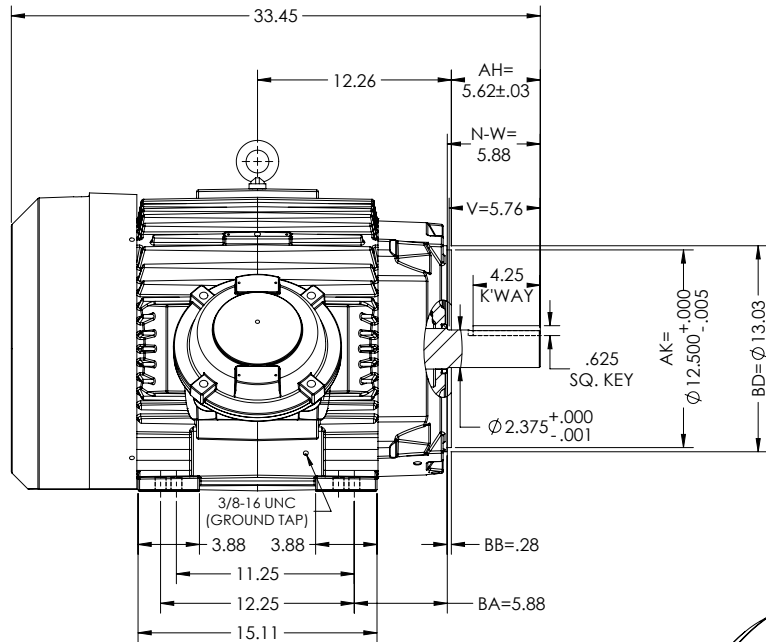
**DUTY MASTER ALTERNATING CURRENT MOTORS**  
SQUIRREL-CAGE INDUCTION

UNDERWRITER MOTOR

MOUNTING: FOOT, F-1

E365TC/E364TC FRAME MOUNTING HOLES

COOLING: FAN COOLED EXPLOSION PROOF



DIMENSIONS ARE IN INCHES.  
MOTOR WEIGHT (LBS)= 944±15% DEPENDING RATING.  
CUSTOMER IS RESPONSIBLE FOR DETERMINING THAT MOTOR PERFORMANCE IS SUITABLE IN THE APPLICATION.

SHEET NUMBER  
**1 OF 1**  
082-CPL119

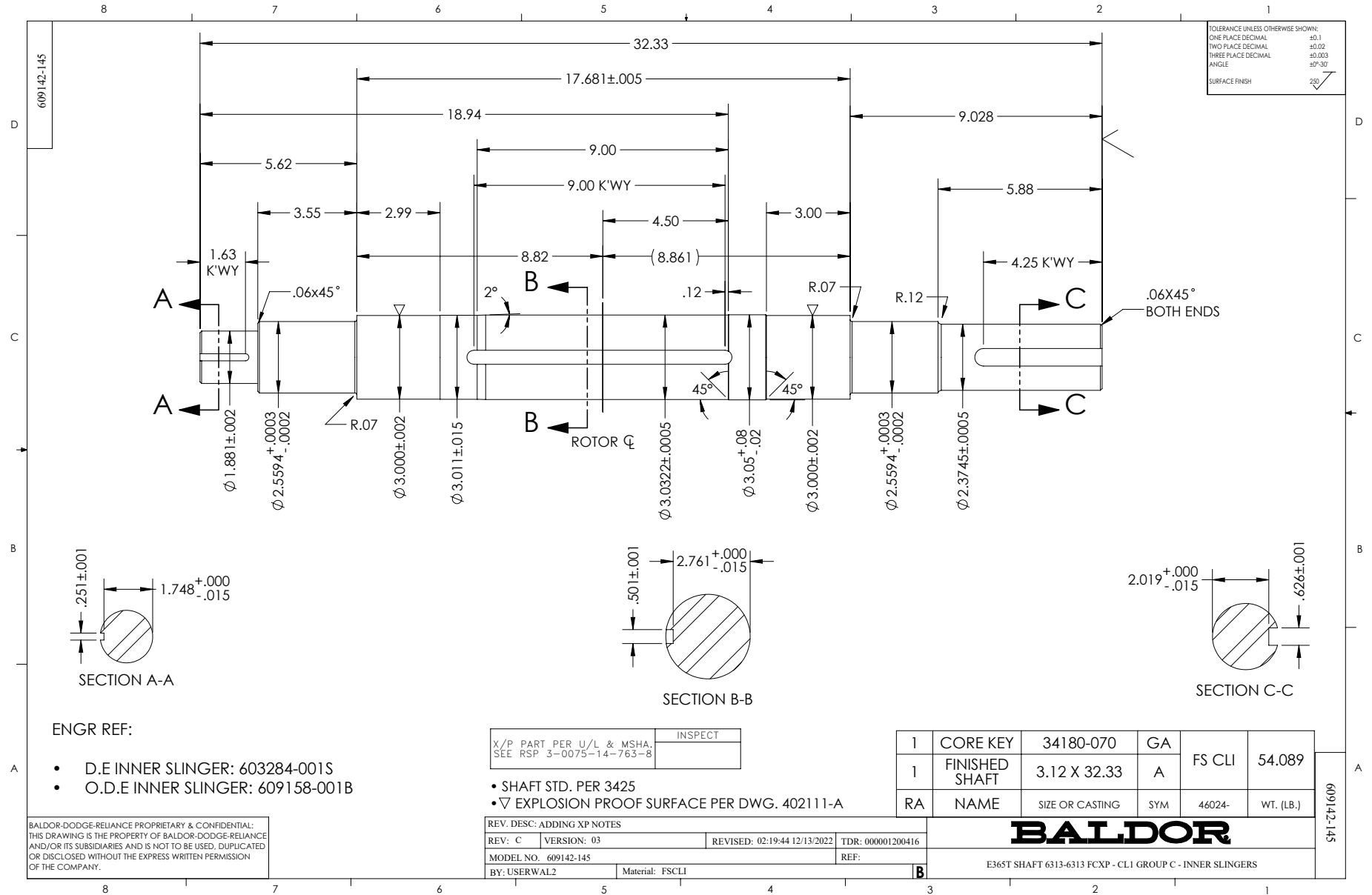
FACE RUNOUT & ECCENTRICITY = .007 MAX. T.I.R.  
IF MOUNTING CLEARANCE DETAILS ARE REQUIRED, CONSULT FACTORY.  
MAX PERMISSIBLE SHAFT RUNOUT WHEN MEASURED AT END OF STANDARD SHAFT EXTENSION IS .003" T.I.R.

REV. DESC: NEW DRAWING	VERSION: 00	REVISED: 02/26/38 05/21/2019	TDR: 000001109209
MODEL NO. 611742-780	BY: USJEDH		

**BALDOR**

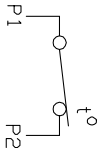
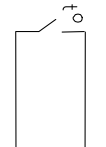
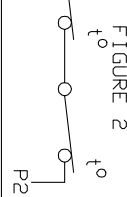
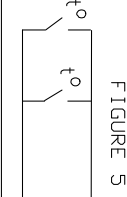
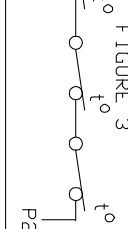
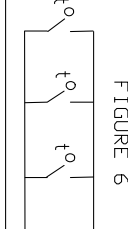
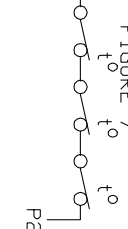
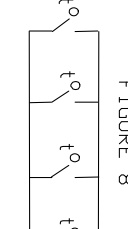
E365/364TC FCXP F1 FOOT CAST IRON BOX/GROUP C & D/GROUND TAP

611742-780



# CONNECTION DIAGRAM ACCESSORIES

MOTOR WINDING THERMOSTATS	
CONTACTS _____ @ _____ °C	
FIGURE NUMBER _____	
CONTACT RATING	
VOLTS	CONTINUOUS AMPERES
110-120	3.0
220-240	1.5
440-480	0.75
550-600	0.60
	INRUSH AMPERES
	30
	15
	7.5
	6.0

NORMALLY CLOSED	THERMOSTATS	NORMALLY OPEN
 <p>FIGURE 1</p>		 <p>FIGURE 4</p>
 <p>FIGURE 2</p>		 <p>FIGURE 5</p>
 <p>FIGURE 3</p>		 <p>FIGURE 6</p>
 <p>FIGURE 7</p>		 <p>FIGURE 8</p>

CUSTOMER \_\_\_\_\_ CUSTOMER ORDER NO. \_\_\_\_\_ S.O. NO. \_\_\_\_\_

418174-006

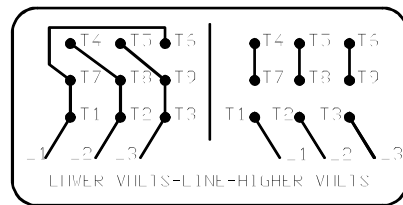
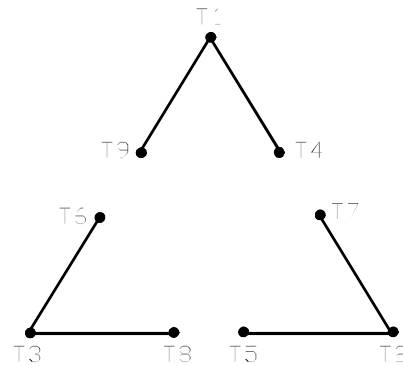
418174-006

REV. DESC: LOADED TO BUS		
REV. LTR: A	VERSION: 01	TDR: 00000570390
FILE: \RAG\00013\849	REVISED: 10:16:21 12/07/2010	BY: RAGDRF
MTL: -		

**BALDOR**  
A-C MOTOR CONNECTION ACCESSORIES  
SH 1 of 1

416820-002

A-C MOTOR  
 CONNECTION DIAGRAM  
 STANDARD 9 LEAD DELTA-CONNECTED



(N.P. 1575-B)

416820-002

REV. DESC: FONT CHANGE FOR PDF SEARCHABLE		
REV. LTR: A	VERSION: 01	TDR: 000001009382
FILE: \MGA\00000\661	REVISED: 02:46:19 02/13/2020	BY: MGHMTT
MTL: -	© □	

**BALDOR - RELIANCE®**

CONN DIAG - STANDARD 9 LEAD, DELTA-CONNECTED

SH 1 of 1