

DUTY MASTER ALTERNATING CURRENT MOTORS

SQUIRREL-CAGE INDUCTION

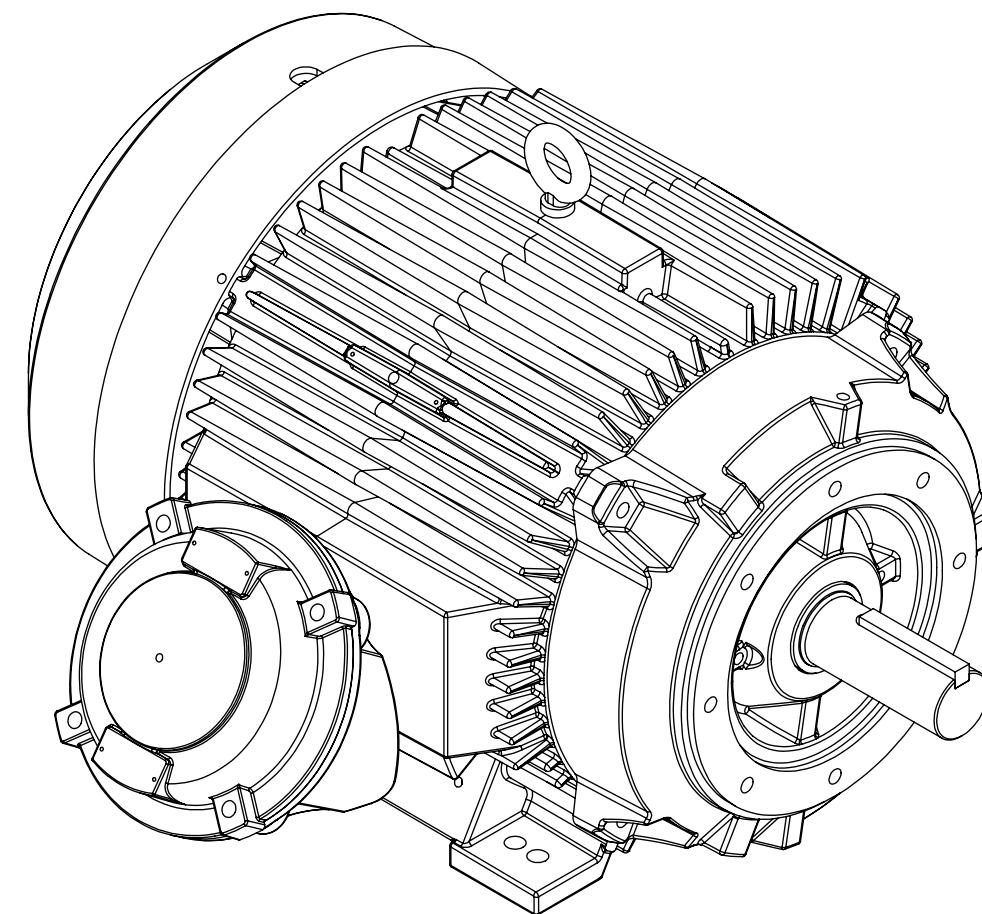
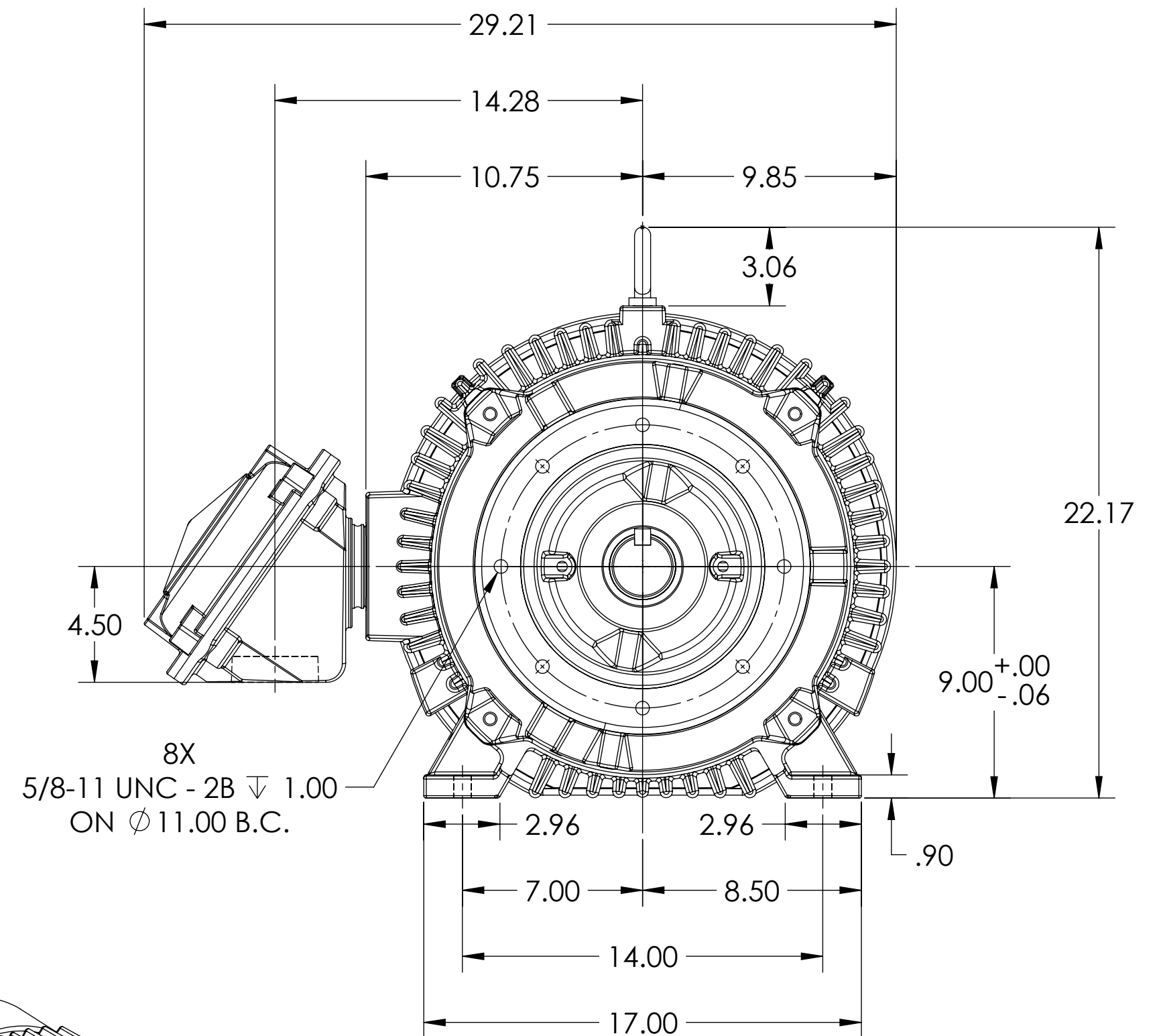
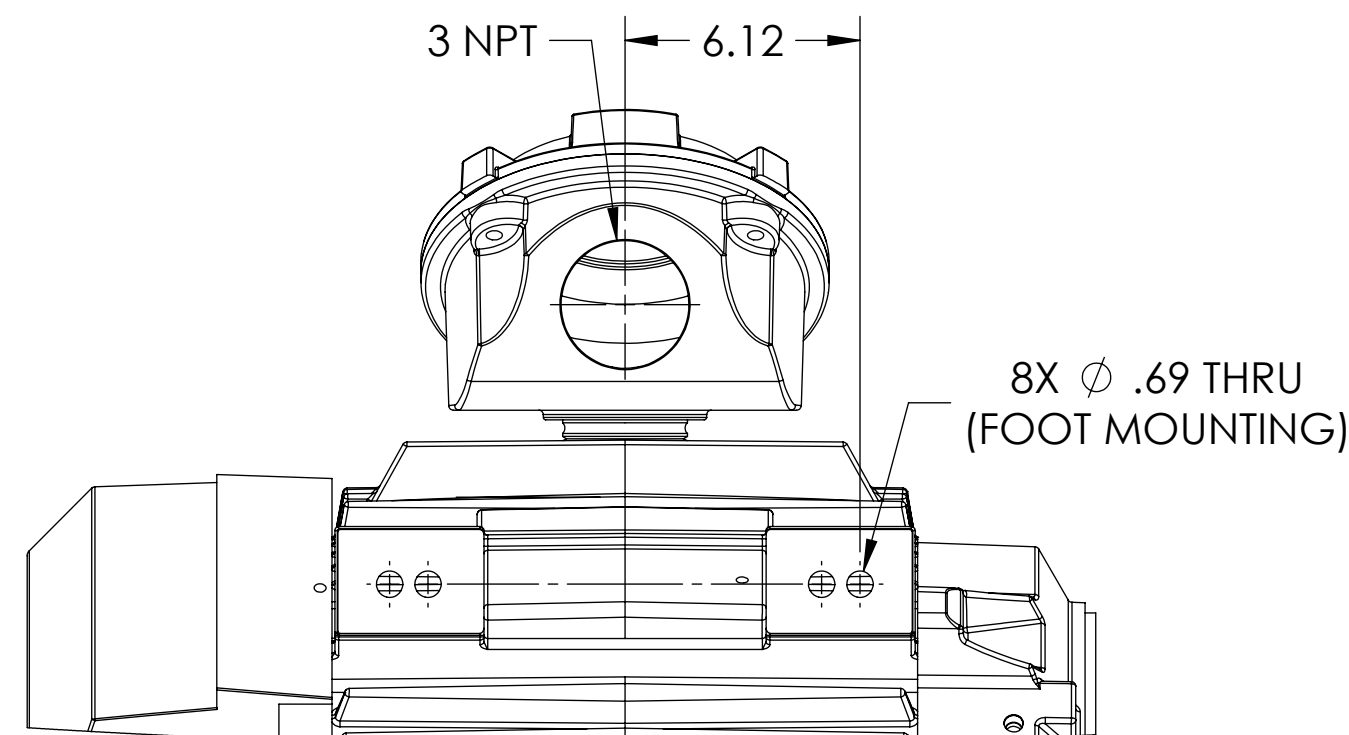
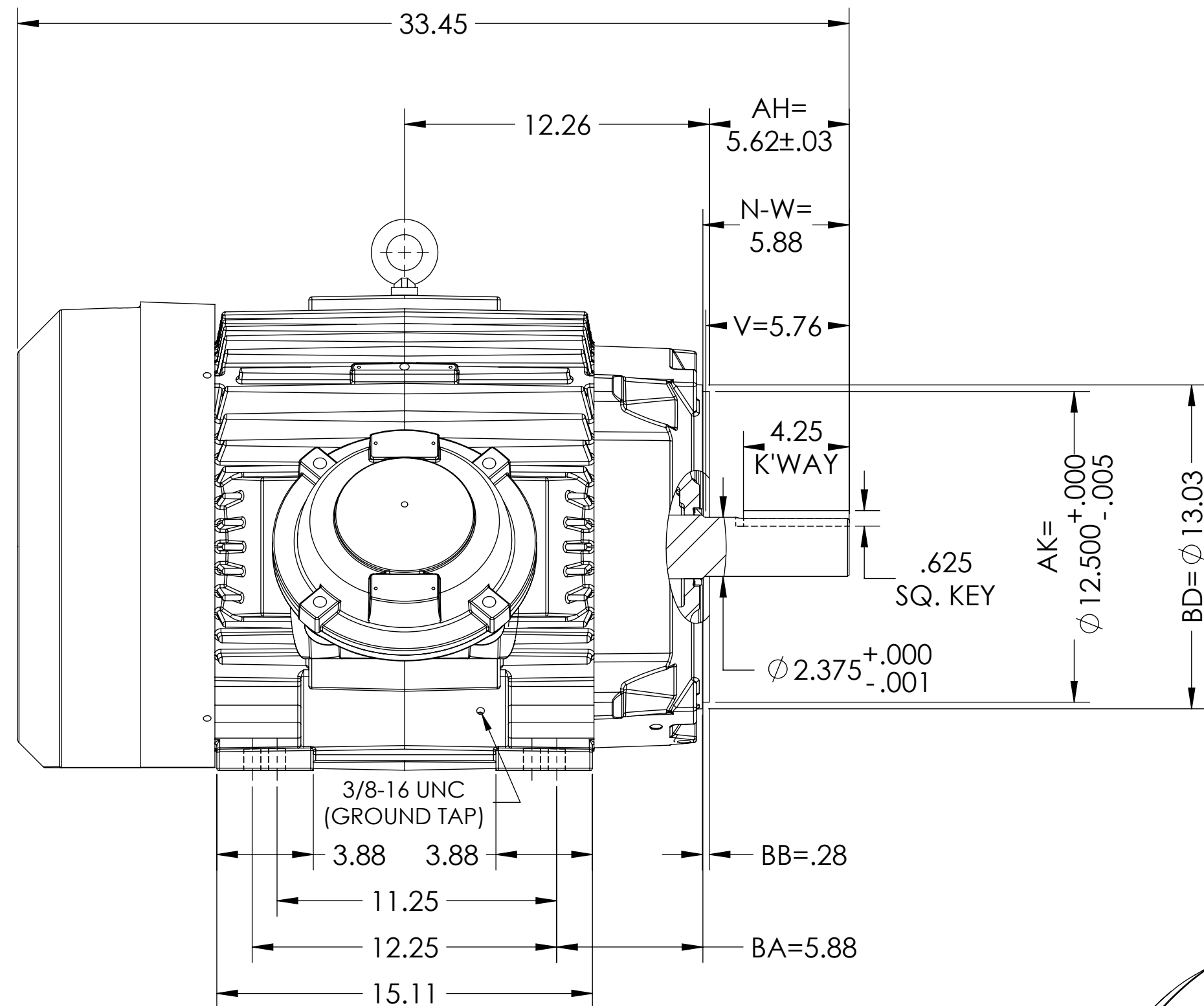
UNDERWRITER MOTOR

ENCLOSURE: TOTALLY ENCLOSED

MOUNTING: FOOT, F-1

E365TC/E364TC FRAME MOUNTING HOLES

COOLING: FAN COOLED EXPLOSION PROOF



DIMENSIONS ARE IN INCHES.
MOTOR WEIGHT (LBS)= 944 ± 15% DEPENDING RATING.
CUSTOMER IS RESPONSIBLE FOR DETERMINING THAT MOTOR PERFORMANCE IS SUITABLE IN THE APPLICATION.

SHEET NUMBER
1 OF 1

611742-780

FACE RUNOUT & ECCENTRICITY = .007 MAX. T.I.R.
IF MOUNTING CLEARANCE DETAILS ARE REQUIRED, CONSULT FACTORY.
MAX PERMISSIBLE SHAFT RUNOUT WHEN MEASURED AT END OF STANDARD SHAFT EXTENSION IS .003" T.I.R.

REV. DESC: NEW DRAWING			
REV: -	VERSION: 00	REVISED: 02:26:38 05/21/2019	TDR: 000001109209
MODEL NO. 611742-780			
BY: USJEDIL			

BALDOR

E365/364TC FCXP F1 FOOT CAST IRON BOX/GROUP C & D/GROUND TAP