

# **ABB BALDOR RELIANCE III**

---

## **Customer information packet** CDRX36464T

40HP, 1190RPM, 3PH, 60HZ, 364TC, TEFC, F1

Class - CLI GP C,D

Division - Division I

**Specifications**

<b>Enclosure</b>	TEFC
<b>Frame</b>	364TC
<b>Frame Material</b>	Iron
<b>Frequency</b>	60.00 Hz
<b>Haz Area Class and Group</b>	CLI GP C,D
<b>Haz Area Division</b>	Division I
<b>Motor Letter Type</b>	Three Phase
<b>Output @ Frequency</b>	40.000 HP @ 60 HZ
<b>Phase</b>	3
<b>Synchronous Speed @ Frequency</b>	1200 RPM @ 60 HZ
<b>Voltage @ Frequency</b>	230.0 V @ 60 HZ 460.0 V @ 60 HZ
<b>Agency Approvals</b>	CCSAUSEEV CSA UL
<b>Ambient Temperature</b>	40 °C
<b>Auxiliary Box</b>	NO AUXILLARY BOX
<b>Base Indicator</b>	Rigid
<b>Bearing Grease Type</b>	Polyrex EM (-20F +300F)
<b>Constant Torque Speed Range</b>	6-60
<b>Current @ Voltage</b>	49.800 A @ 460.0 V 99.600 A @ 230.0 V
<b>Design Code</b>	B
<b>Drip Cover</b>	No Drip Cover
<b>Duty Rating</b>	CONT
<b>Efficiency @ 100% Load</b>	94.1 %
<b>Feedback Device</b>	NO FEEDBACK
<b>Haz Area Temp Code</b>	T3C
<b>Heater Indicator</b>	No Heater
<b>High Voltage Full Load Amps</b>	49.8 a
<b>Insulation Class</b>	F
<b>Inverter Code</b>	Inverter Ready

**Part Detail**

<b>Revision</b>	-
<b>Type</b>	AC
<b>Mech. spec.</b>	
<b>Base</b>	
<b>Status</b>	PRD/A
<b>Elec. spec.</b>	A36WG1194
<b>Layout</b>	611742-780
<b>Eff. date</b>	06-18-2019
<b>CD Diagram</b>	416820-002
<b>Poles</b>	06
<b>Leads</b>	3#4,6#6
<b>Proprietary</b>	False
<b>Created date</b>	05-30-2019

<b>IP Rating</b>	NONE
<b>KVA Code</b>	G
<b>Lifting Lugs</b>	Standard Lifting Lugs
<b>Max Speed</b>	3000 rpm
<b>Motor Lead Quantity/Wire Size</b>	3 @ 4 AWG
<b>Motor Standards</b>	NEMA
<b>Motor Type</b>	A36062M
<b>Mounting Arrangement</b>	F1
<b>Number of Poles</b>	6
<b>Overall Length</b>	33.45 IN
<b>Power Factor</b>	80
<b>Product Family</b>	General Industrial
<b>Pulley End Bearing Type</b>	Ball
<b>Pulley Face Code</b>	C-Face
<b>Service Factor</b>	1.00
<b>Shaft Diameter</b>	2.374 IN
<b>Shaft Ground Indicator</b>	No Shaft Grounding
<b>Shaft Rotation</b>	Reversible
<b>Shaft Slinger Indicator</b>	Shaft Slinger
<b>Speed</b>	1190 rpm
<b>Speed Code</b>	Single Speed
<b>Starting Method</b>	Direct on line
<b>Thermal Device - Bearing</b>	None
<b>Thermal Device - Winding</b>	Normally Closed Thermostat

**Nameplate**

<b>NP2496L</b>
MOBIL POLYREX EM

---

**000692000FX**

---

---

**000613006PC**

---

<b>CLASS I GROUP</b>	C D X	<b>NO.</b>	
<b>CLASS II GROUP</b>	X X X		
<b>OPERATING TEMP CODE</b>	T3C		

---

**NP3140L**

<b>SPEC NO.</b>	A36-7818-1194		<b>CAT.NO.</b>	CDRX36464T			<b>FRAME</b>	364TC		
<b>HP</b>	40	<b>VOLTS</b>	230/460		<b>PHASE</b>	3	<b>DESIGN</b>	B	<b>TYPE</b>	P
<b>RPM</b>	1190	<b>AMPS</b>	99.6/49.8		<b>HZ</b>	60	<b>AMB</b>	40	<b>SF</b>	1.00
<b>DRIVE END BEARING</b>	65BC03J30X		<b>DUTY</b>	CONT		<b>INSUL.CLASS</b>	F			
<b>OPP D.E. BEARING</b>	65BC03J30X		<b>ENCL</b>	TEFC		<b>CODE</b>	G			
<b>SF</b>	1.15	<b>WK2</b>	20.223	<b>MAG CUR</b>	37/18.5		<b>RPM MAX</b>	3000		
<b>CT HZ</b>	6-60	<b>VT HZ</b>	0-60	<b>CHP HZ</b>	60-90		<b>NEMA-NOM-EFF</b>	94.1		
	SUIT FOR 55C AMB AT 1.00 SF					IP55				
<b>SER.NO.</b>				<b>MOTOR WEIGHT</b>	908					

CUSTOMER INFORMATION PACKET		CDRX36464T - 40HP, 1190RPM, 3PH, 60HZ, 364TC, TEFC, F1				
FRAME	HP	TYPE	PHASE/ HERTZ	RPM	VOLTS	
364T	40	P	3/60	1190	230/460	

AMPS	DUTY	AMB °C/ INSUL	S.F.	NEMA DESIGN	CODE LETTER	ENCLOSURE
99.6/49.8	CONT	40/F	1.00	B	G	TEFC

E/S	ROTOR	TEST S.O.	TEST DATE	STATOR RES. @25 °C OHMS (BETWEEN LINES)	
491378	418141088JE	---	---	.0373/.149	

**PERFORMANCE**


LOAD	HP	AMPERES	RPM	% POWER FACTOR	% EFFICIENCY
NO LOAD	0	18.5	1200	5.70	0
1/4	10.0	22.4	1197	47.0	89.2
2/4	20.0	29.6	1194	67.8	93.2
3/4	30.0	39.1	1191	76.3	94.1
4/4	40.0	49.8	1188	79.9	94.1
5/4	50.0	61.2	1184	81.6	93.7

**SPEED TORQUE**

	RPM	TORQUE % FULL LOAD	TORQUE LB.-FT.	AMPERES
LOCKED ROTOR	0	165	291	300
PULL UP	480	142	251	274
BREAKDOWN	1134	251	444	172
FULL LOAD	1188	100	177	49.8

AMPERES SHOWN FOR 460 VOLT CONNECTION. IF OTHER CONNECTIONS ARE AVAILABLE, THE AMPERES WILL VARY INVERSELY WITH THE RATED VOLTAGE.

TYPICAL DATA  
 XE MOTOR-NEMA NOM. EFF. 94.1 %  
 GUARANTEED MIN. EFF. 93.0%

	DRAWN BY: <u>T.G. KELATI</u>	AC MOTOR PERFORMANCE DATA	<b>A36WG1194-R015</b>
	CHECKED BY: <u>D. H. MAY</u>		
	APPROVED BY: <u>E.J. CHRISTIAN</u>		
	DATE: <u>10/12/06</u>		

FRAME 364T

VOLTS 230/460

NEMA DESIGN B

TEST S.O. TYPICAL DATA

HP 40

AMPS 99.6/49.8

CODE LETTER G

TEST DATE ---

TYPE P

DUTY CONT

ENCLOSURE TEFC

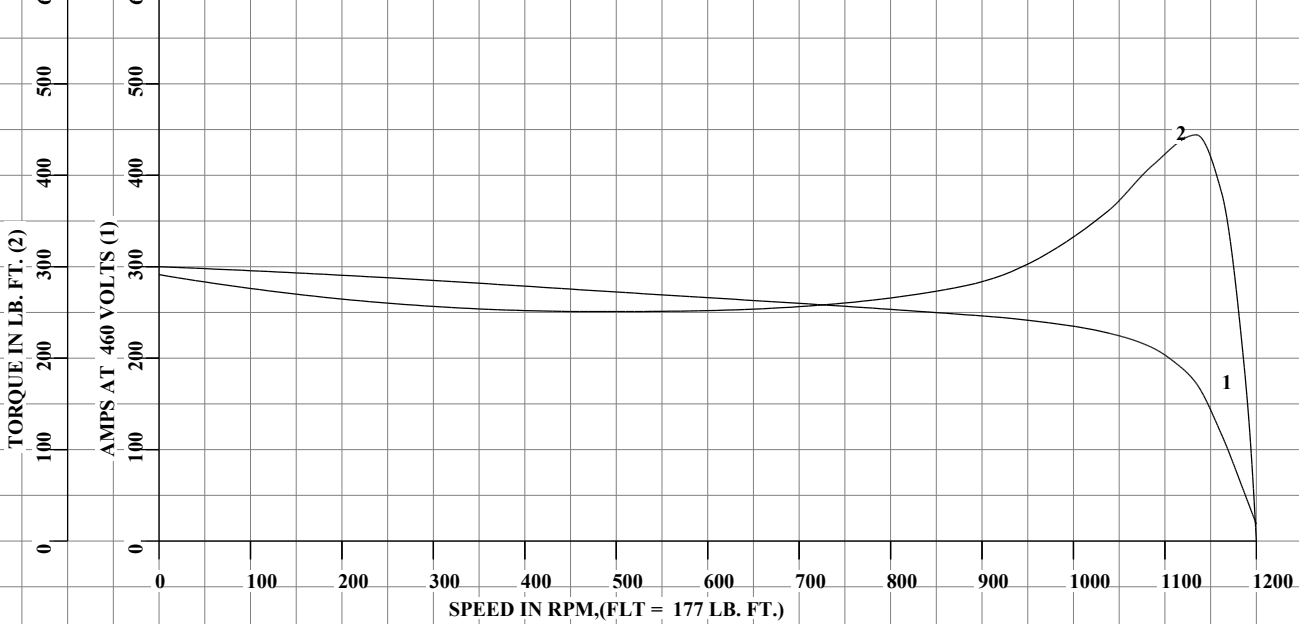
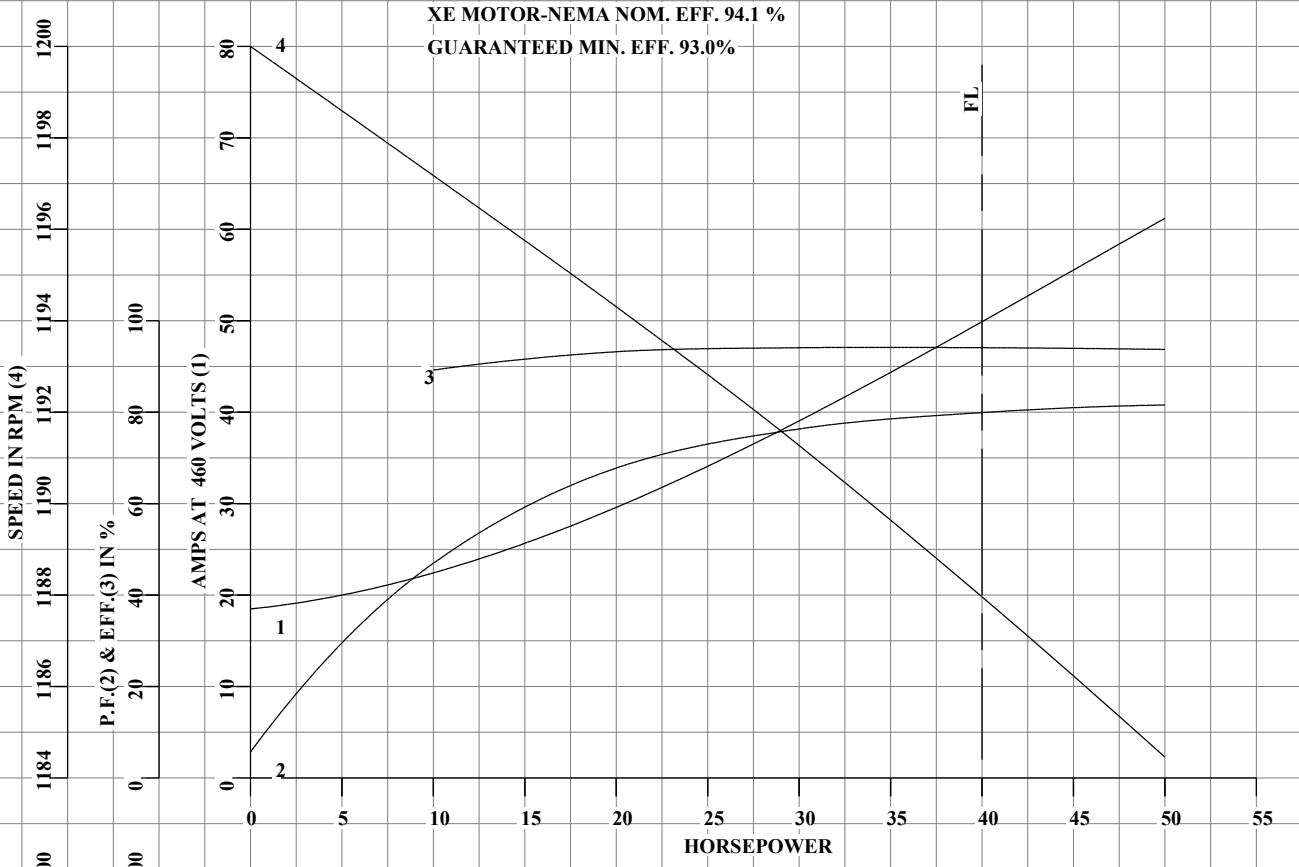
STATOR RES. @ 25°C .0373/.149

PHASE / HERTZ 3/60

AMB °C / INSUL 40/F

E/S 491378

OHMS (BETWEEN LINES)



AMPERES SHOWN FOR 230/460 VOLT CONNECTION, IF OTHER VOLTAGE CONNECTIONS ARE AVAILABLE, THE AMPERES WILL VARY INVERSELY WITH THE RATED VOLTAGE.



DRAWN BY: T.G. KELATI  
 CHECKED BY: D. H. MAY  
 APPROVED BY: E.J. CHRISTIAN  
 DATE: 10/12/06

AC MOTOR  
PERFORMANCE  
DATA

**A36WG1194-R015**

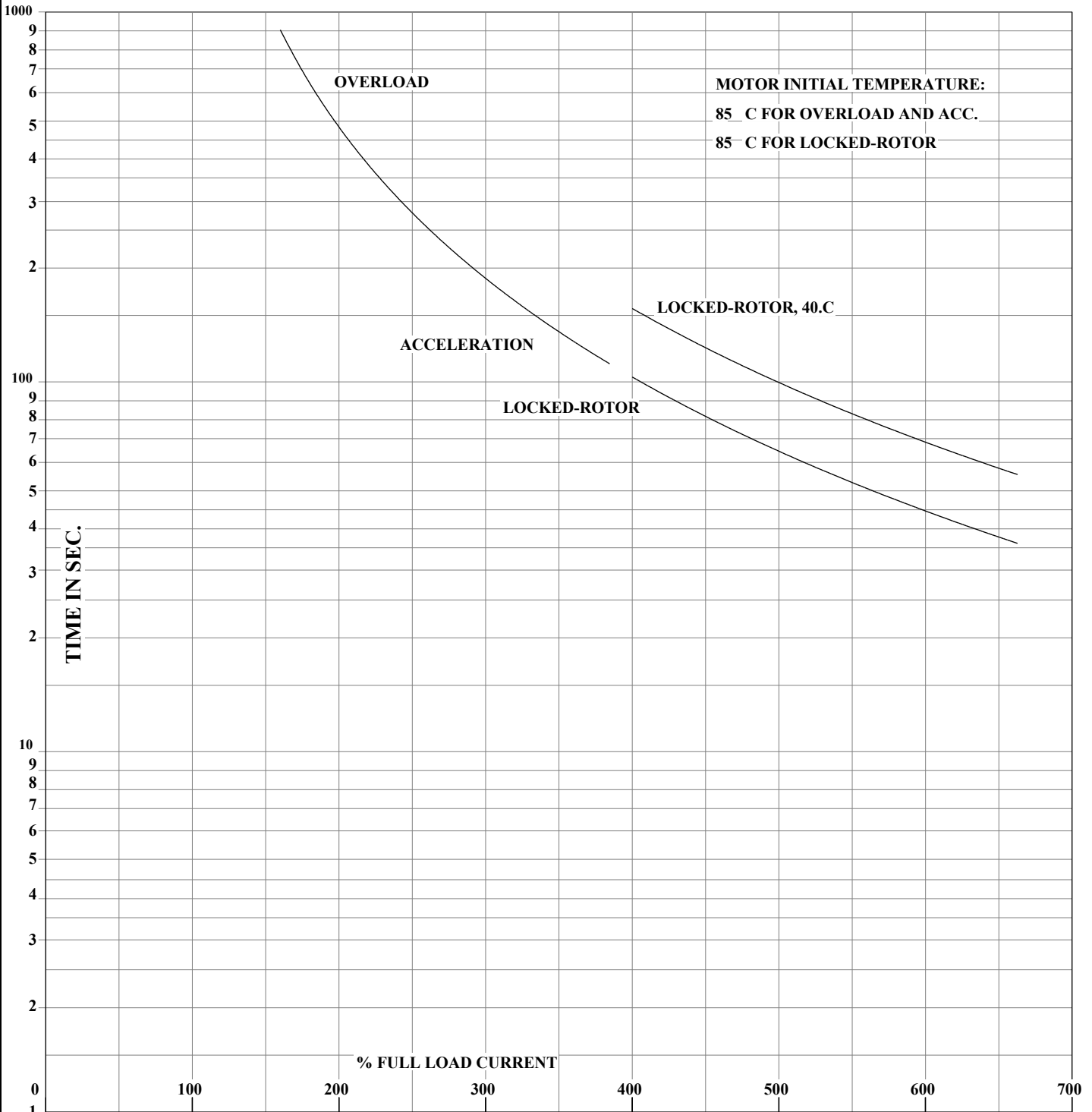
ISSUE DATE 01/24/25

FRAME 364T  
HP 40  
TYPE P  
PHASE / HERTZ 3/60

RPM 1190  
VOLTS 230/460  
AMPS 99.6/49.8  
DUTY CONT  
AMB °C / INSUL 40/F

S.F. 1.00  
NEMA DESIGN B  
CODE LETTER G  
ENCLOSURE TEFC  
E/S 491378

ROTOR 418141088JE  
TEST S.O. TYPICAL DATA  
TEST DATE ---  
STATOR RES. @ 25°C .0373/.149  
OHMS (BETWEEN LINES)



THERMAL LIMIT CURVE  
XE MOTOR-NEMA NOM. EFF. 94.1 %

AMPERES SHOWN FOR 230/460 VOLT CONNECTION, IF OTHER VOLTAGE CONNECTIONS ARE AVAILABLE, THE AMPERES WILL VARY INVERSELY WITH THE RATED VOLTAGE.

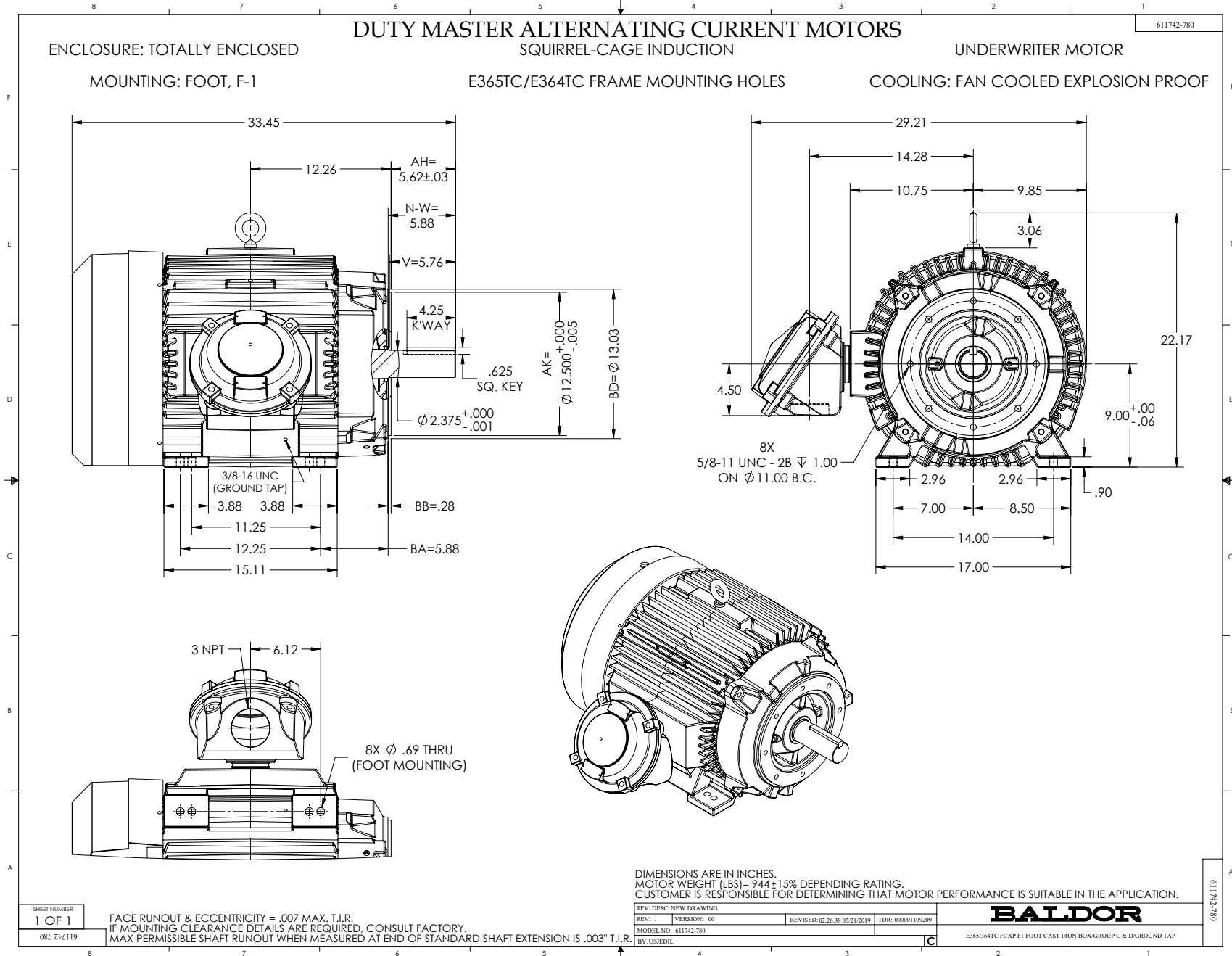


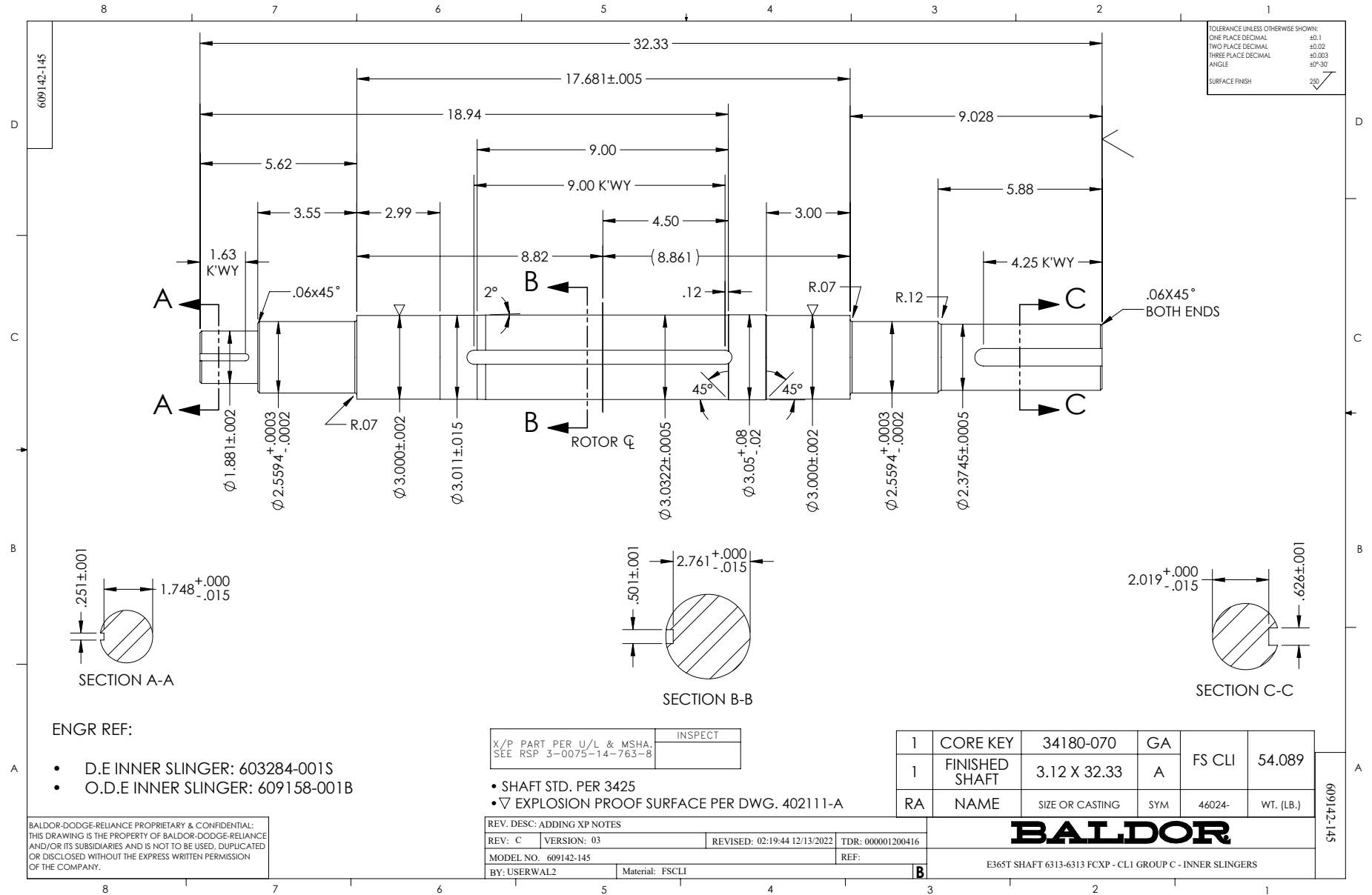
DRAWN BY: T.G. KELATI  
CHECKED BY: D. H. MAY  
APPROVED BY: E.J. CHRISTIAN  
DATE: 10/12/06

AC MOTOR  
PERFORMANCE  
DATA

**A36WG1194-R015**

ISSUE DATE 01/24/25





## CONNECTION DIAGRAM ACCESSORIES

MOTOR WINDING THERMOSTATS	
CONTACTS _____ @ _____ °C	
FIGURE NUMBER _____	
CONTACT RATING	
VOLTS	CONTINUOUS AMPERES
110-120	3.0
220-240	1.5
440-480	0.75
550-600	0.60
	INRUSH AMPERES
	30
	15
	7.5
	6.0

NORMALLY CLOSED	THERMOSTATS	NORMALLY OPEN
 FIGURE 1		 FIGURE 4
 FIGURE 2		 FIGURE 5
 FIGURE 3		 FIGURE 6
 FIGURE 7		 FIGURE 8

CUSTOMER \_\_\_\_\_ CUSTOMER ORDER NO. \_\_\_\_\_ S.O. NO. \_\_\_\_\_

418174-006

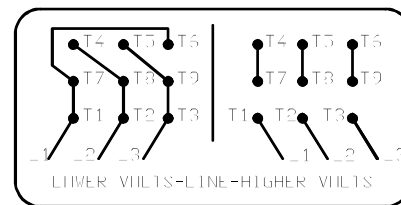
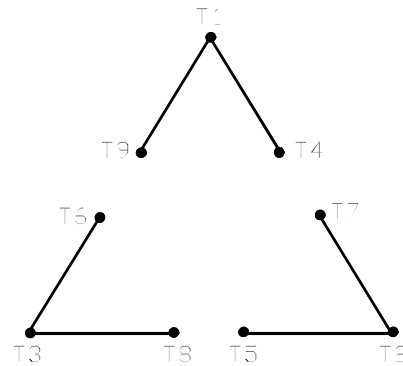
418174-006

REV. DESC: LOADED TO BUS		
REV. LTR: A	VERSION: 01	TDR: 000000570390
FILE: \RAG\00013\849	REVISED: 10:16:21 12/07/2010	BY: RAGDRF
MTL: -		

**BALDOR**  
A-C MOTOR CONNECTION ACCESSORIES  
SH 1 of 1

416820-002

A-C MOTOR  
CONNECTION DIAGRAM  
STANDARD 9 LEAD DELTA-CONNECTED



(N.P. 1575-B)

REV. DESC: FONT CHANGE FOR PDF SEARCHABLE		
REV. LTR: A	VERSION: 01	TDR: 000001009382
FILE: \MGA\00000\661	REVISED: 02:46:19 02/13/2020	BY: MGHMTT
MTL: -		© □

**BALDOR - RELIANCE®**

CONN DIAG - STANDARD 9 LEAD, DELTA-CONNECTED

SH 1 of 1

416820-002