

ABB BALDOR RELIANCE III

Customer information packet

CDRX28324T

30HP, 3520//2920RPM, 3PH, 60/50HZ, 286TSC, XP

Class - CLI GP C,D

Division - Division I

Specifications

Enclosure	XPFC
Frame	286TSC
Frame Material	Iron
Frequency	50.00 Hz 60.00 Hz
Haz Area Class and Group	CLI GP C,D
Haz Area Division	Division I
Motor Letter Type	Three Phase
Output @ Frequency	25.000 HP @ 50 HZ 30.000 HP @ 60 HZ
Phase	3
Synchronous Speed @ Frequency	3600 RPM @ 60 HZ
Voltage @ Frequency	380.0 V @ 50 HZ 230.0 V @ 60 HZ 190.0 V @ 50 HZ 460.0 V @ 60 HZ
Agency Approvals	CSA EEV UL
Ambient Temperature	40 °C
Auxiliary Box	NO AUXILLARY BOX
Auxiliary Box Lead Termination	None
Base Indicator	Rigid
Bearing Grease Type	Polyrex EM (-20F +300F)
Blower	None
Constant Torque Speed Range	6
Current @ Voltage	72.000 A @ 208.0 V 68.000 A @ 190.0 V 66.000 A @ 230.0 V 34.000 A @ 380.0 V 33.000 A @ 460.0 V
Design Code	B
Drip Cover	No Drip Cover

Part Detail

Revision	G
Type	AC
Mech. spec.	
Base	
Status	PRD/A
Elec. spec.	10WGZ035
Layout	10LYG898
Eff. date	11-05-2024
CD Diagram	CD0180
Poles	02
Leads	9#10
Proprietary	False
Created date	06-04-2019

Duty Rating	CONT
Efficiency @ 100% Load	91.7 %
Electrically Isolated Bearing	Not Electrically Isolated
Feedback Device	NO FEEDBACK
Haz Area Temp Code	T3C
Heater Indicator	No Heater
High Voltage Full Load Amps	33.0 a
Insulation Class	F
Inverter Code	Inverter Duty
IP Rating	NONE
KVA Code	G
Lifting Lugs	Standard Lifting Lugs
Locked Bearing Indicator	Locked Bearing
Max Speed	5400 rpm
Motor Lead Termination	Flying Leads
Motor Standards	NEMA
Motor Type	1046M
Mounting Arrangement	F1
Number of Poles	2
Overall Length	27.23 IN
Power Factor	90
Product Family	Hazardous Location Motor
Pulley Face Code	C-Face
Rodent Screen	None
RoHS Status	ROHS NON-COMPLIANT
Service Factor	1.00
Shaft Diameter	1.625 IN
Shaft Ground Indicator	No Shaft Grounding
Shaft Rotation	Reversible
Speed	3520 rpm
Speed Code	Single Speed
Starting Method	Direct on line
Thermal Device - Bearing	None
Thermal Device - Winding	Normally Closed Thermostat

Vibration Sensor Indicator

No Vibration Sensor

Winding Thermal 1

None

Winding Thermal 2

None

Nameplate

NP1401XPSLEV

NO.		CC	010A		
S/N		TEMP CODE	T3C		
SPEC.	10-0000-0834	INV.TYPE	PWM		
CAT.NO.	CDRX28324T	C HP FR	60	C HP TO	90
HP	30//25	CT HZ FROM	6	CT HZ TO	60
VOLTS	230/460//190/380	VT HZ FROM	6	VT HZ TO	60
AMPS	66/33//68/34	MAG CUR	18/9		
RPM	3520//2920	MX RPM	5400		
HZ	60//50	PH	3	CL	F
		NOM.EFF.	91.7		
SER.F.	1.00	DES	B	SL HZ	1.3
		WK2	1.98		
FRAME	286TSC	RATING	40C AMB-CONT		
	55C AMB @ 1.0 SF, 60C RISE				
	1.15SF ON SINEWAVE		NEMA MG-1 PT.5,IP55		

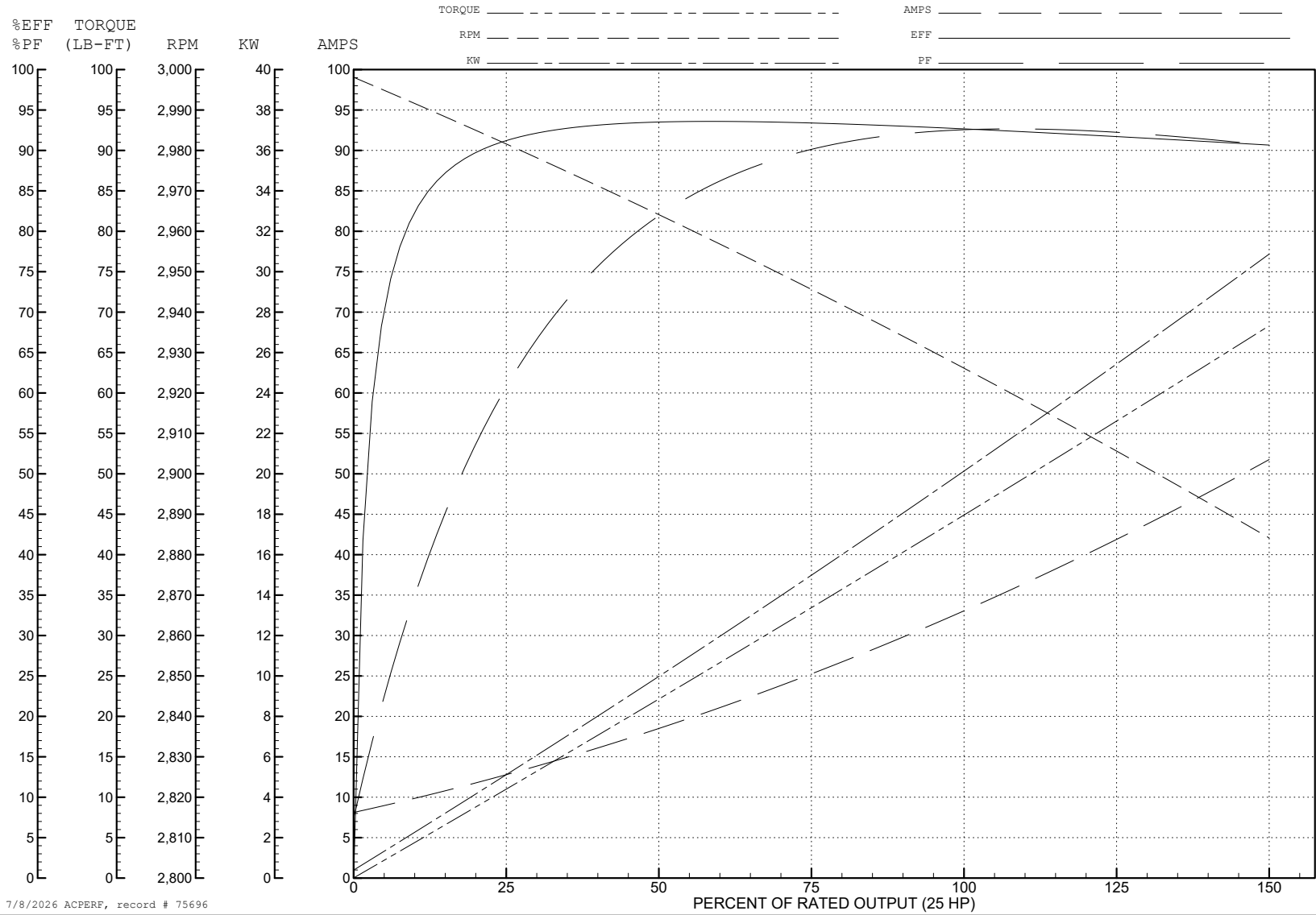
ABB Motors and Mechanical Inc.

WINDING # 10WGZ035

Typical performance - not guaranteed values.

25 HP 3 PH 50 HZ 2927 RPM 380 V 1046M

TORQUES (LB-FT): PO=164 PU=64.66 LR=85.07 LRA=219



7/8/2026 ACPERF, record # 75696

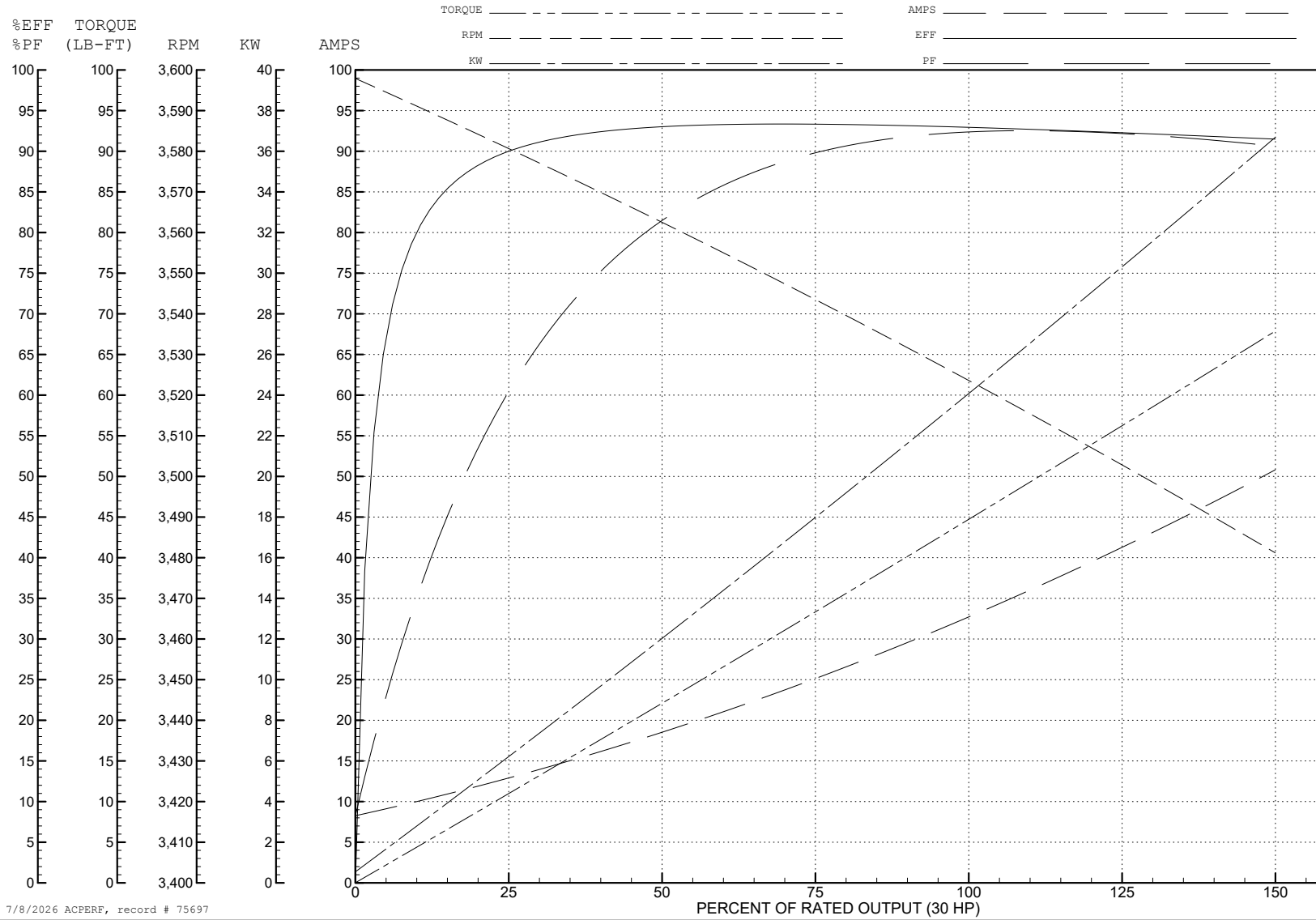
ABB Motors and Mechanical Inc.

WINDING # 10WGZ035

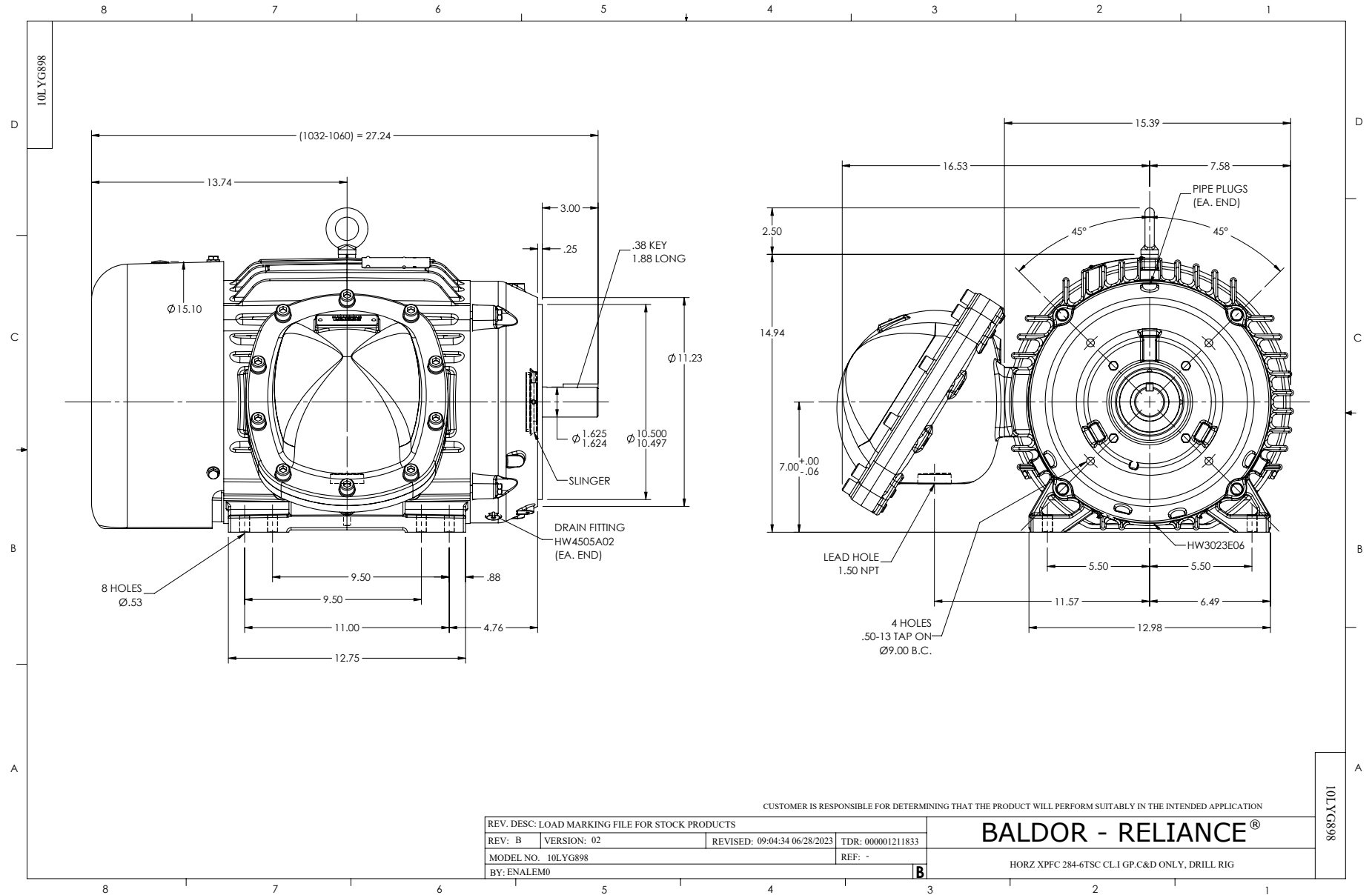
Typical performance - not guaranteed values.

30 HP 3 PH 60 HZ 3525 RPM 460 V 1046M

TORQUES (LB-FT): PO=169 PU=60.8 LR=80 LRA=223



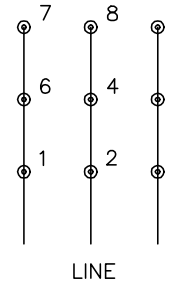
7/8/2026 ACPERF, record # 75697



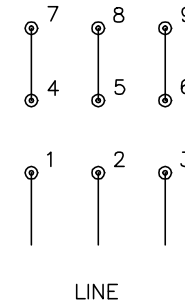
CD0180



LOW VOLTAGE
(2D)



HIGH VOLTAGE
(1D)



NOTES:

1. INTERCHANGE ANY TWO LINE LEADS TO REVERSE ROTATION.
2. OPTIONAL THERMOSTATS ARE PROVIDED WHEN SPECIFIED.
3. ACTUAL NUMBER OF INTERNAL PARALLEL CIRCUITS MAY BE A MULTIPLE OF THOSE SHOWN ABOVE.
4. LEAD COLORS ARE OPTIONAL. LEADS MUST ALWAYS BE NUMBERED AS SHOWN.

CD0180

REV. DESC: ADD CLASS CONN00000007		
REV. LTR: D	VERSION: 01	TDR: 000001099922
FILE: \AAA\00005\148	REVISED: 10:25:29 02/19/2019	BY: ENBRIRO
MTL: -	© □	

BALDOR - RELIANCE®

3PH, DV, 9 LEADS, DELTA CONNECTION

SH 1 of 1