

BALDOR® • RELIANCE™

Customer information packet

CDRX21724T

7.5HP, 3510//2910RPM, 3PH, 60/50HZ, 213TC, XP

Class - CLI GP C,D

Division - Division I

Specifications

Enclosure	XPFC
Frame	213TC
Frame Material	Iron
Frequency	50.00 Hz 60.00 Hz
Haz Area Class and Group	CLI GP C,D
Haz Area Division	Division I
Motor Letter Type	Three Phase
Output @ Frequency	7.500 HP @ 60 HZ 5.000 HP @ 50 HZ
Phase	3
Synchronous Speed @ Frequency	3600 RPM @ 60 HZ
Voltage @ Frequency	460.0 V @ 60 HZ 190.0 V @ 50 HZ 230.0 V @ 60 HZ 380.0 V @ 50 HZ
Agency Approvals	UL CSA EEV
Ambient Temperature	40 °C
Auxillary Box	No Auxillary Box
Auxillary Box Lead Termination	None
Base Indicator	Rigid
Bearing Grease Type	Polyrex EM (-20F +300F)
Blower	None
Constant Torque Speed Range	6
Current @ Voltage	15.200 A @ 190.0 V 18.000 A @ 230.0 V 7.600 A @ 380.0 V 9.000 A @ 460.0 V
Design Code	B
Drip Cover	No Drip Cover
Duty Rating	CONT

Part detail

Revision	D
Type	AC
Mech. spec.	
Base	
Status	PRD/A
Elec. spec.	07WGY328
Layout	07LYJ232
Eff. date	02-14-2024
CD Diagram	CD0005
Poles	02
Leads	9#14
Proprietary	False
Created date	06-21-2019

Efficiency @ 100% Load	90.7 %
Electrically Isolated Bearing	Not Electrically Isolated
Feedback Device	NO FEEDBACK
Haz Area Temp Code	T3C
Heater Indicator	No Heater
High Voltage Full Load Amps	7.6 a
Insulation Class	F
Inverter Code	Inverter Duty
IP Rating	NONE
KVA Code	H
Lifting Lugs	Standard Lifting Lugs
Locked Bearing Indicator	Locked Bearing
Max Speed	5400 rpm
Motor Lead Termination	Flying Leads
Motor Standards	NEMA
Motor Type	0726M
Mounting Arrangement	F1
Number of Poles	2
Overall Length	20.78 IN
Power Factor	87
Product Family	General Purpose
Pulley Face Code	C-Face
Rodent Screen	None
RoHS Status	ROHS NON-COMPLIANT
Service Factor	1.00
Shaft Diameter	1.375 IN
Shaft Ground Indicator	No Shaft Grounding
Shaft Rotation	Reversible
Speed	3510 rpm
Speed Code	Single Speed
Starting Method	Direct on line
Thermal Device - Bearing	None
Thermal Device - Winding	Normally Closed Thermostat
Vibration Sensor Indicator	No Vibration Sensor

Winding Thermal 1	None
Winding Thermal 2	None

Nameplate

NP1401XPSLEV										
NO.		CC	010A							
S/N		TEMP CODE	T3C							
SPEC.	07-0000-0152		INV.TYPE	PWM						
CAT.NO.	CDRX21724T		C HP FR	60	C HP TO	90				
HP	7.5//5		CT HZ FROM	6	CT HZ TO	60				
VOLTS	230/460//190/380		VT HZ FROM	6	VT HZ TO	60				
AMPS	18/9//15.2/7.6		MAG CUR	9.2/4.6						
RPM	3510//2910		MX RPM	5400						
HZ	60//50	PH	3	CL	F	NOM.EFF.	90.7			
SER.F.	1.00	DES	B	SL HZ	1.5	WK2	0.25			
FRAME	213TC	RATING	40C AMB-CONT							
	55C AMB @ 1.0 SF									
	1.15 SF SINEWAVE									

AC Induction Motor Performance Data

Record # 74891

Typical performance - not guaranteed values

Winding: 07WGY328-R006		Type: 0726M		Enclosure: XPFC	
Nameplate Data			380 V, 50 Hz: High Voltage Connection		
Rated Output (HP)	7.5		Full Load Torque	8.95 LB-FT	
Volts	230/460//190/380		Start Configuration	direct on line	
Full Load Amps	18/9//15.2/7.6		Breakdown Torque	36.93 LB-FT	
R.P.M.	3510//2910		Pull-up Torque	21.54 LB-FT	
Hz	60//50	Phase	3	Locked-rotor Torque	24.82 LB-FT
NEMA Design Code	B KVA Code		H	Starting Current	59.17 A
Service Factor (S.F.)			1	No-load Current	3.44 A
NEMA Nom. Eff.	90.7	Power Factor	87	Line-line Res. @ 25°C	1.19 Ω
Rating - Duty	40C AMB-CONT			Temp. Rise @ Rated Load	34°C
				Locked-rotor Power Factor	38.2
				Rotor inertia	0.237 LB-FT ²

Load Characteristics 380 V, 50 Hz, 5 HP

% of Rated Load	25	50	75	100	125	150
Power Factor	48	69	78	84	88	88
Efficiency	76.9	85.1	87.4	88.3	87.7	86.8
Speed	2983	2966	2947	2928	2906	2882
Line amperes	3.83	4.82	6.18	7.62	9.17	11.03

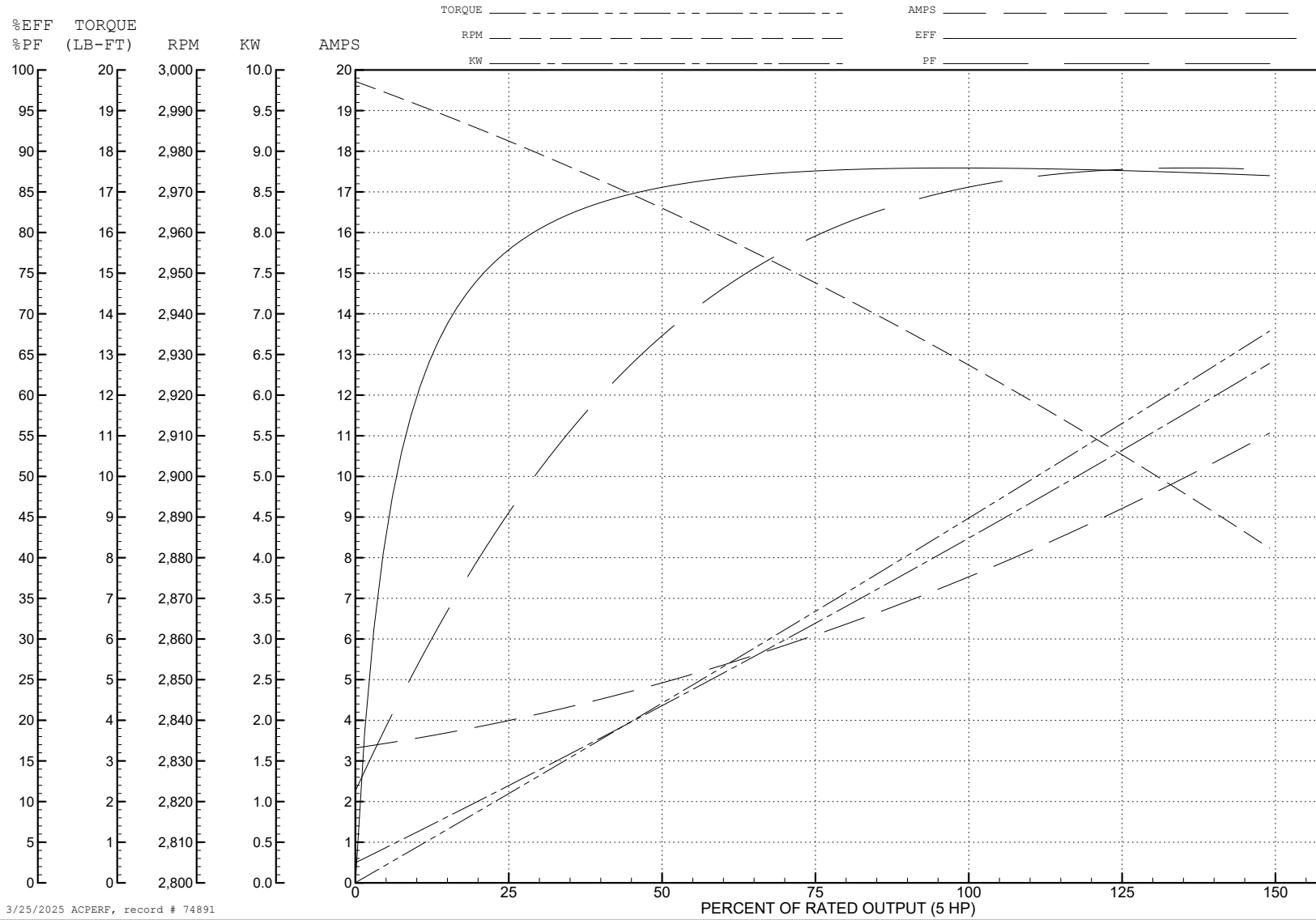
ABB Motors and Mechanical Inc.

WINDING # 07WGY328

Typical performance - not guaranteed values.

5 HP 3 PH 50 HZ 2928 RPM 380 V 0726M

TORQUES (LB-FT): PO=36.93 PU=21.54 LR=24.82 LRA=59.17



3/25/2025 ACPERF, record # 74891

AC Induction Motor Performance Data

Record # 74892

Typical performance - not guaranteed values

Winding: 07WGY328-R006		Type: 0726M		Enclosure: XPFC	
Nameplate Data			460 V, 60 Hz: High Voltage Connection		
Rated Output (HP)	7.5//5		Full Load Torque	7.43 LB-FT	
Volts	230/460//190/380		Start Configuration	direct on line	
Full Load Amps	18/9//15.2/7.6		Breakdown Torque	38.8 LB-FT	
R.P.M.	3510//2910		Pull-up Torque	20.4 LB-FT	
Hz	60//50	Phase	3	Locked-rotor Torque	23.5 LB-FT
NEMA Design Code	B KVA Code		H	Starting Current	61.1 A
Service Factor (S.F.)			1	No-load Current	3.54 A
NEMA Nom. Eff.	90.7	Power Factor	87	Line-line Res. @ 25°C	1.19 Ω
Rating - Duty	40C AMB-CONT			Temp. Rise @ Rated Load	29°C
				Locked-rotor Power Factor	33.8
				Rotor inertia	0.237 LB-FT ²

Load Characteristics 460 V, 60 Hz, 5 HP

% of Rated Load	25	50	75	100	125	150
Power Factor	40	60	71	78	83	85
Efficiency	75.2	84.5	87.4	88.8	88.7	88.3
Speed	3587	3571	3554	3537	3518	3497
Line amperes	3.83	4.61	5.66	6.76	7.93	9.36

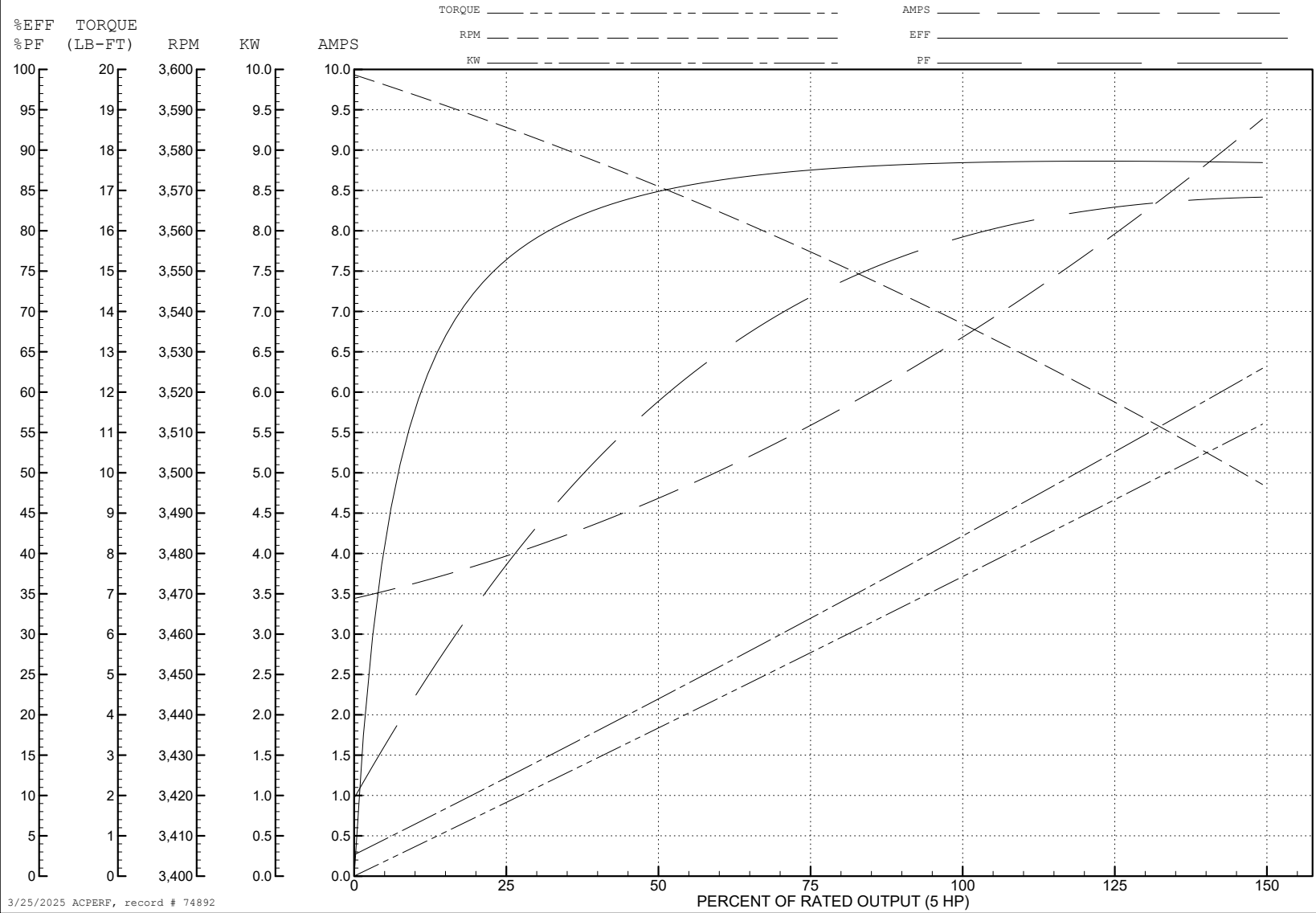
ABB Motors and Mechanical Inc.

WINDING # 07WGY328

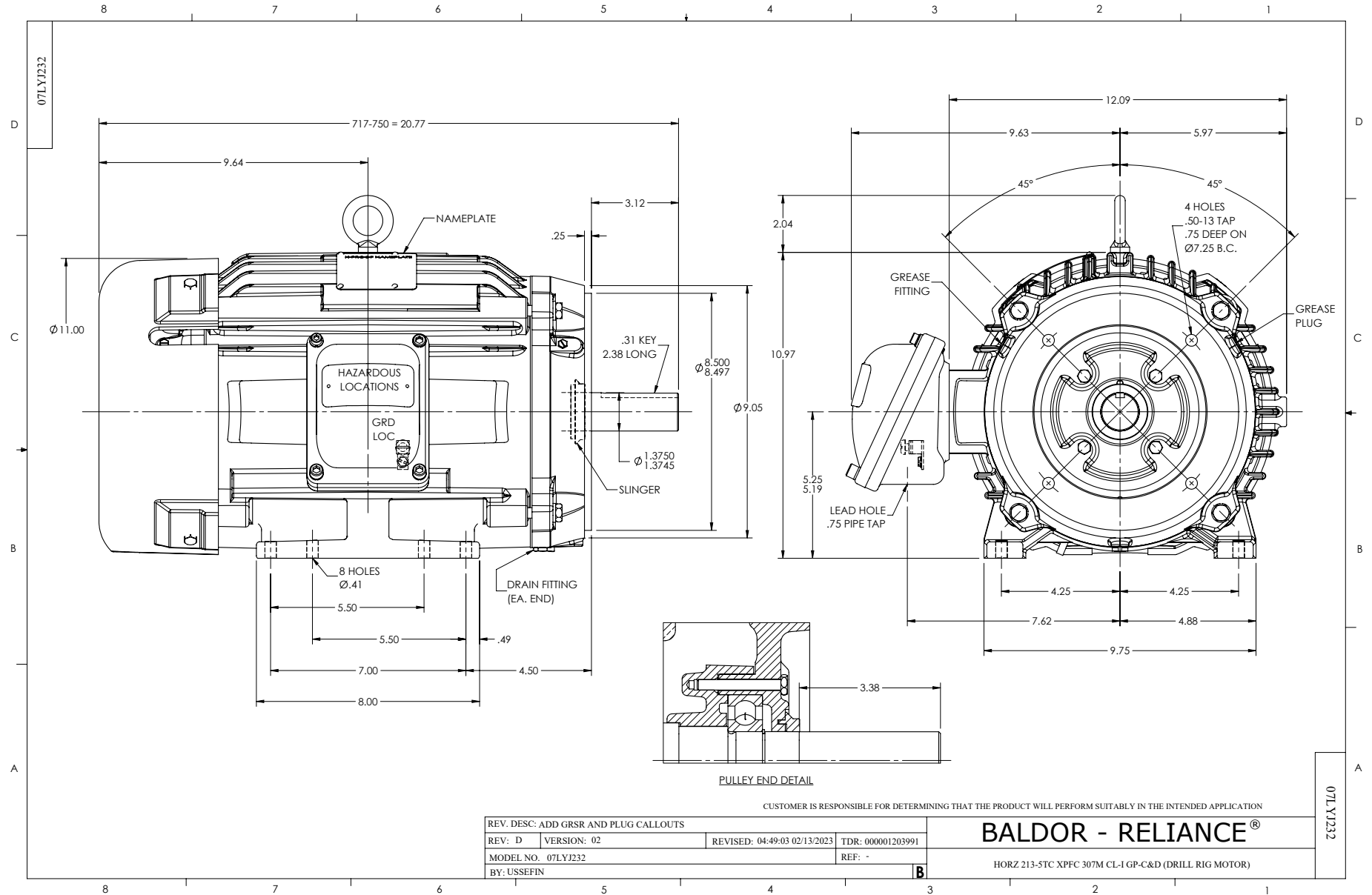
5 HP 3 PH 60 HZ 3537 RPM 460 V 0726M

Typical performance - not guaranteed values.

TORQUES (LB-FT): PO=38.8 PU=20.4 LR=23.5 LRA=61.1



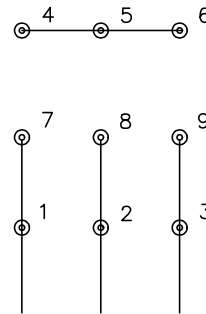
3/25/2025 ACPERF, record # 74892



CD0005

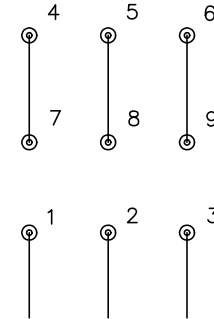


LOW VOLTAGE
(2Y)



LINE

HIGH VOLTAGE
(1Y)



LINE

NOTES:

1. INTERCHANGE ANY TWO LINE LEADS TO REVERSE ROTATION.
2. OPTIONAL THERMOSTATS ARE PROVIDED WHEN SPECIFIED.
3. ACTUAL NUMBER OF INTERNAL PARALLEL CIRCUITS MAY BE A MULTIPLE OF THOSE SHOWN ABOVE.
4. LEAD COLORS ARE OPTIONAL. LEADS MUST ALWAYS BE NUMBERED AS SHOWN.

CD0005

REV. DESC: REVISE TO SHOW OPTIONAL COLORS			
REV. LTR: E	BY: JLP	REVISED: 01/19/99 10:15	TDR: 0171435
S00000		FILE: AAA00005140	MDL: -
		MTL: -	

BALDOR ELECTRIC Co.

3PH, DV, 9 LEADS