



Customer information packet

CDRX21564T

5HP, 1160//965RPM, 3PH, 60/50HZ, 215TC, XPFC,
Class - CLI GP C,D
Division - Division I

Specifications

Enclosure	XPFC
Frame	215TC
Frame Material	Iron
Frequency	50.00 Hz 60.00 Hz
Haz Area Class and Group	CLI GP C,D
Haz Area Division	Division I
Motor Letter Type	Three Phase
Output @ Frequency	5.000 HP @ 60 HZ 3.000 HP @ 50 HZ
Phase	3
Synchronous Speed @ Frequency	1200 RPM @ 60 HZ
Voltage @ Frequency	460.0 V @ 60 HZ 190.0 V @ 50 HZ 230.0 V @ 60 HZ 380.0 V @ 50 HZ
Agency Approvals	UL CSA EEV
Ambient Temperature	40 °C
Auxillary Box	No Auxillary Box
Auxillary Box Lead Termination	None
Base Indicator	Rigid
Bearing Grease Type	Polyrex EM (-20F +300F)
Blower	None
Constant Torque Speed Range	6
Current @ Voltage	11.000 A @ 190.0 V 14.200 A @ 230.0 V 5.500 A @ 380.0 V 7.100 A @ 460.0 V
Design Code	B
Drip Cover	No Drip Cover
Duty Rating	CONT

Part detail

Revision	D
Type	AC
Mech. spec.	
Base	
Status	PRD/A
Elec. spec.	07WGY242
Layout	07LYJ232
Eff. date	02-14-2024
CD Diagram	CD0005
Poles	06
Leads	9#14
Proprietary	False
Created date	06-21-2019

Efficiency @ 100% Load	89.8 %
Electrically Isolated Bearing	Not Electrically Isolated
Feedback Device	NO FEEDBACK
Haz Area Temp Code	T3C
Heater Indicator	No Heater
High Voltage Full Load Amps	5.5 a
Insulation Class	F
Inverter Code	Inverter Duty
IP Rating	NONE
KVA Code	J
Lifting Lugs	Standard Lifting Lugs
Locked Bearing Indicator	Locked Bearing
Max Speed	1800 rpm
Motor Lead Termination	Flying Leads
Motor Standards	NEMA
Motor Type	0748M
Mounting Arrangement	F1
Number of Poles	6
Overall Length	20.78 IN
Power Factor	74
Product Family	General Purpose
Pulley Face Code	C-Face
Rodent Screen	None
RoHS Status	ROHS NON-COMPLIANT
Service Factor	1.00
Shaft Diameter	1.375 IN
Shaft Ground Indicator	No Shaft Grounding
Shaft Rotation	Reversible
Speed	1160 rpm
Speed Code	Single Speed
Starting Method	Direct on line
Thermal Device - Bearing	None
Thermal Device - Winding	Normally Closed Thermostat
Vibration Sensor Indicator	No Vibration Sensor

Winding Thermal 1	None
Winding Thermal 2	None

Nameplate

NP1401XPSLEV										
NO.		CC	010A							
S/N		TEMP CODE	T3C							
SPEC.	07-0000-0153		INV.TYPE	PWM						
CAT.NO.	CDRX21564T		C HP FR	60	C HP TO	90				
HP	5//3		CT HZ FROM	6	CT HZ TO	60				
VOLTS	230/460//190/380		VT HZ FROM	6	VT HZ TO	60				
AMPS	14.2/7.1//11/5.5		MAG CUR	6.4/3.2						
RPM	1160//965		MX RPM	1800						
HZ	60//50	PH	3	CL	F	NOM.EFF.	89.8			
SER.F.	1.00	DES	B	SL HZ	2	WK2	1.19			
FRAME	215TC	RATING	40C AMB-CONT							
	55C AMB @ 1.0 SF									
	1.15 SF SINEWAVE									
			NEMA MG-1 PT 5,IP55							

AC Induction Motor Performance Data

Record # 74889

Typical performance - not guaranteed values

Winding: 07WGY242-R003		Type: 0748M		Enclosure: TEFC	
Nameplate Data			460 V, 60 Hz: High Voltage Connection		
Rated Output (HP)	5//3		Full Load Torque	22.9 LB-FT	
Volts	230/460//190/380		Start Configuration	direct on line	
Full Load Amps	14.2/7.1//11/5.5		Breakdown Torque	68.1 LB-FT	
R.P.M.	1158//965		Pull-up Torque	40.7 LB-FT	
Hz	60//50	Phase	3	Locked-rotor Torque	48.9 LB-FT
NEMA Design Code	B KVA Code		J	Starting Current	45.7 A
Service Factor (S.F.)			1	No-load Current	3.19 A
NEMA Nom. Eff.	89.8	Power Factor	74	Line-line Res. @ 25°C	1.91 Ω
Rating - Duty	40C AMB-CONT			Temp. Rise @ Rated Load	53°C
				Locked-rotor Power Factor	21.7
				Rotor inertia	1.19 LB-FT ²

Load Characteristics 460 V, 60 Hz, 5 HP

% of Rated Load	25	50	75	100	125	150
Power Factor	39	58	69	74	76	76
Efficiency	86.7	90.4	90.9	89.8	88.2	86.1
Speed	1189	1179	1170	1158	1144	1126
Line amperes	3.53	4.38	5.57	7.08	8.71	10.7

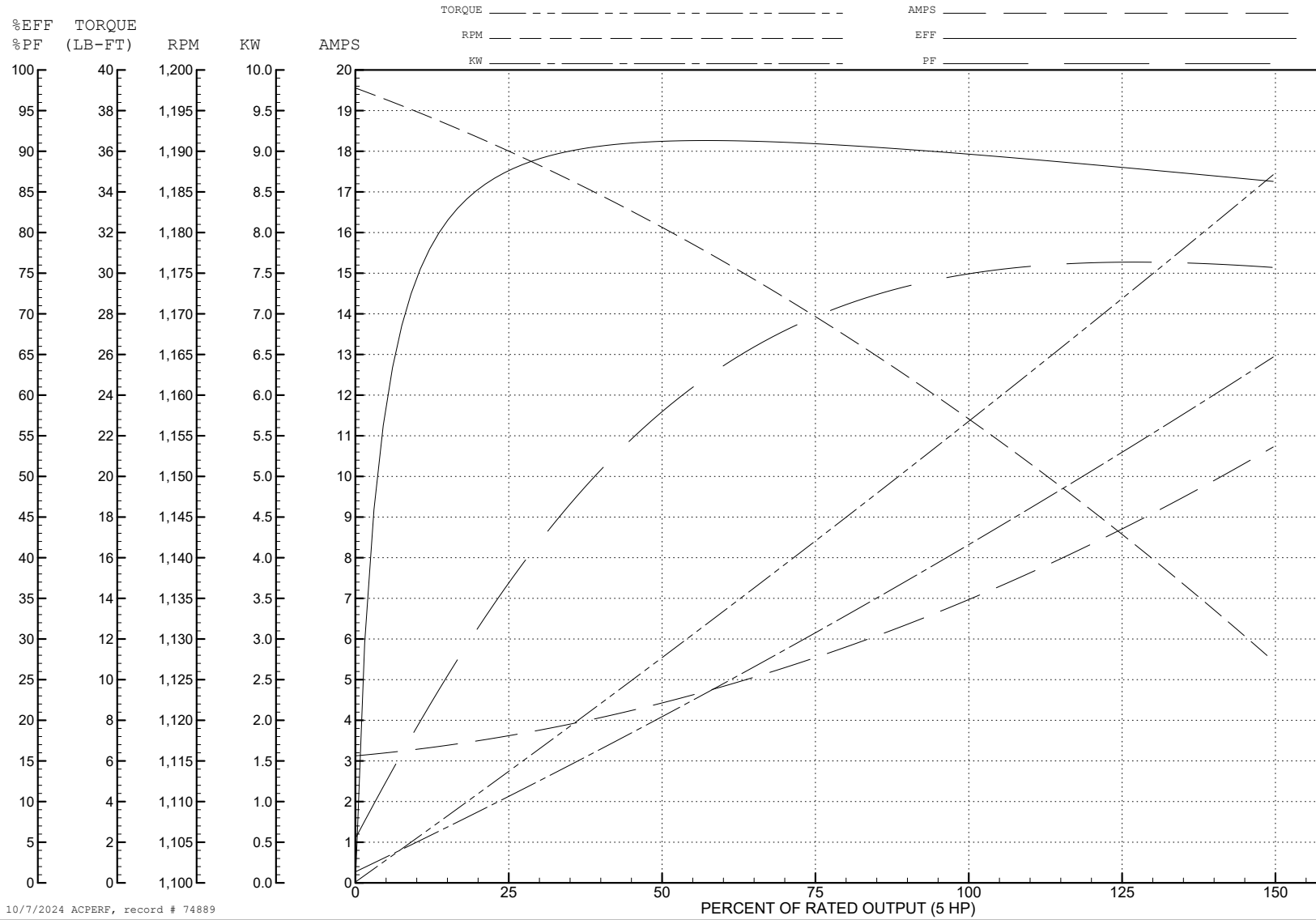
ABB Motors and Mechanical Inc.

WINDING # 07WGY242

5 HP 3 PH 60 HZ 1158 RPM 460 V 0748M

Typical performance - not guaranteed values.

TORQUES (LB-FT): PO=68.1 PU=40.7 LR=48.9 LRA=45.7



10/7/2024 ACPERF, record # 74889

AC Induction Motor Performance Data

Record # 74890

Typical performance - not guaranteed values

Winding: 07WGY242-R003		Type: 0748M		Enclosure: TEFC	
Nameplate Data			380 V, 50 Hz: High Voltage Connection		
Rated Output (HP)	5//3		Full Load Torque	16.41 LB-FT	
Volts	230/460//190/380		Start Configuration	direct on line	
Full Load Amps	14.2/7.1//11/5.5		Breakdown Torque	65.64 LB-FT	
R.P.M.	1158//965		Pull-up Torque	44.98 LB-FT	
Hz	60//50	Phase	3	Locked-rotor Torque	54.05 LB-FT
NEMA Design Code	B KVA Code		J	Starting Current	44.82 A
Service Factor (S.F.)			1	No-load Current	3.15 A
NEMA Nom. Eff.	89.8	Power Factor	74	Line-line Res. @ 25°C	1.91 Ω
Rating - Duty	40C AMB-CONT			Temp. Rise @ Rated Load	36°C
				Locked-rotor Power Factor	25.1
				Rotor inertia	1.19 LB-FT ²

Load Characteristics 380 V, 50 Hz, 3 HP

% of Rated Load	25	50	75	100	125	150
Power Factor	32	50	62	69	74	76
Efficiency	80.8	87.3	89	88.9	88.1	87
Speed	991	984	978	970	961	951
Line amperes	3.36	3.88	4.61	5.57	6.56	7.68

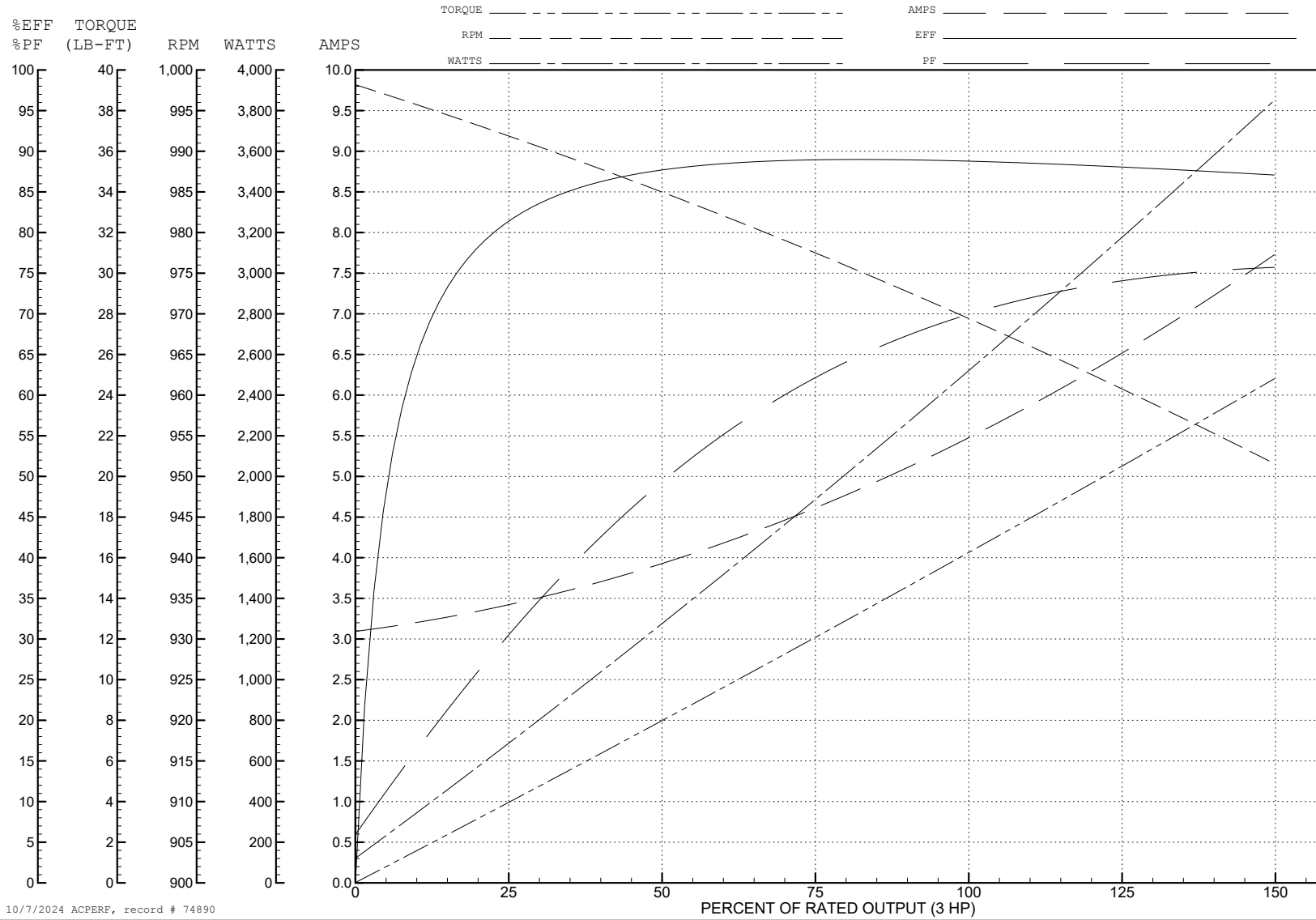
ABB Motors and Mechanical Inc.

WINDING # 07WGY242

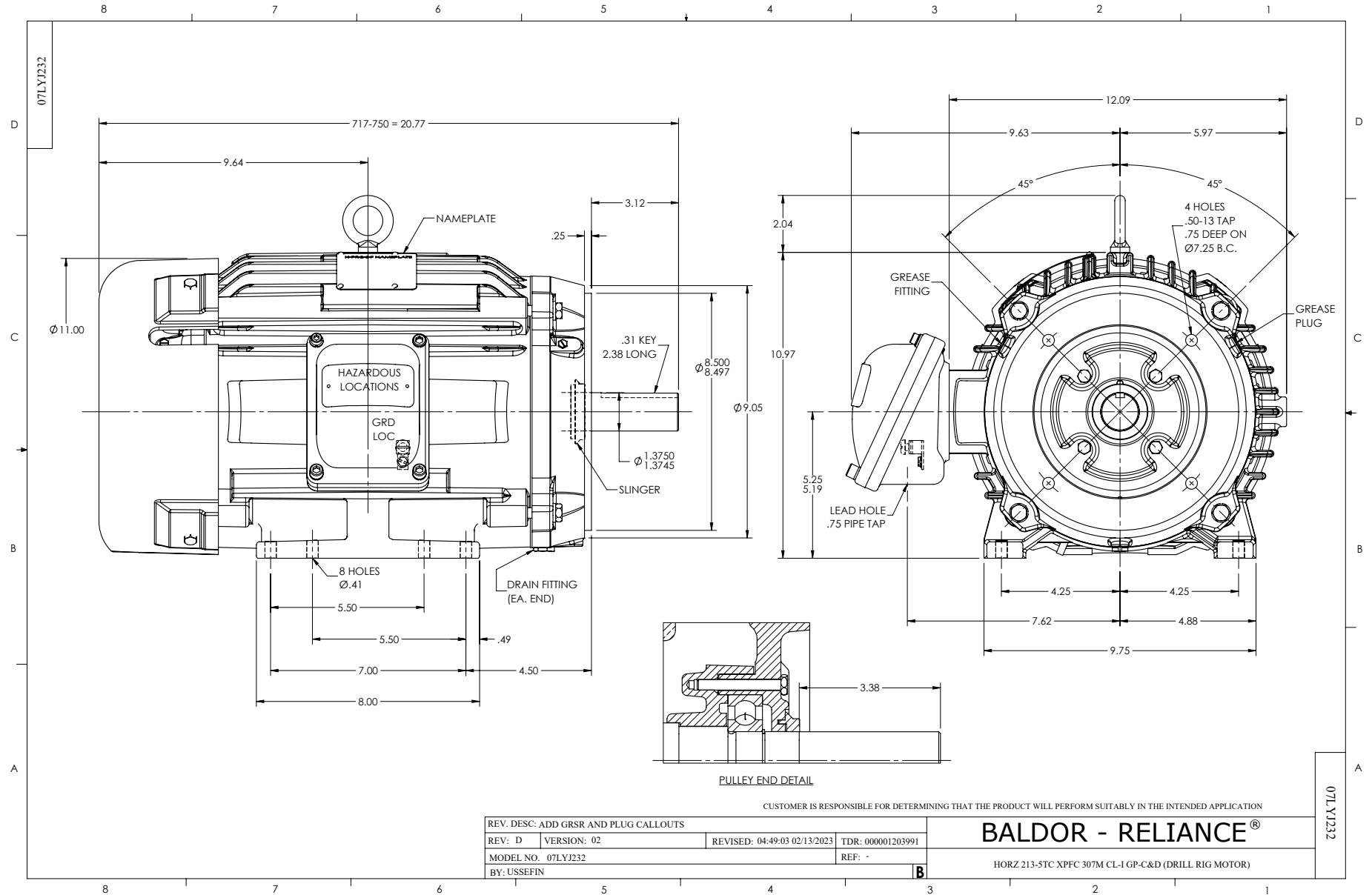
3 HP 3 PH 50 HZ 970 RPM 380 V 0748M

Typical performance - not guaranteed values.

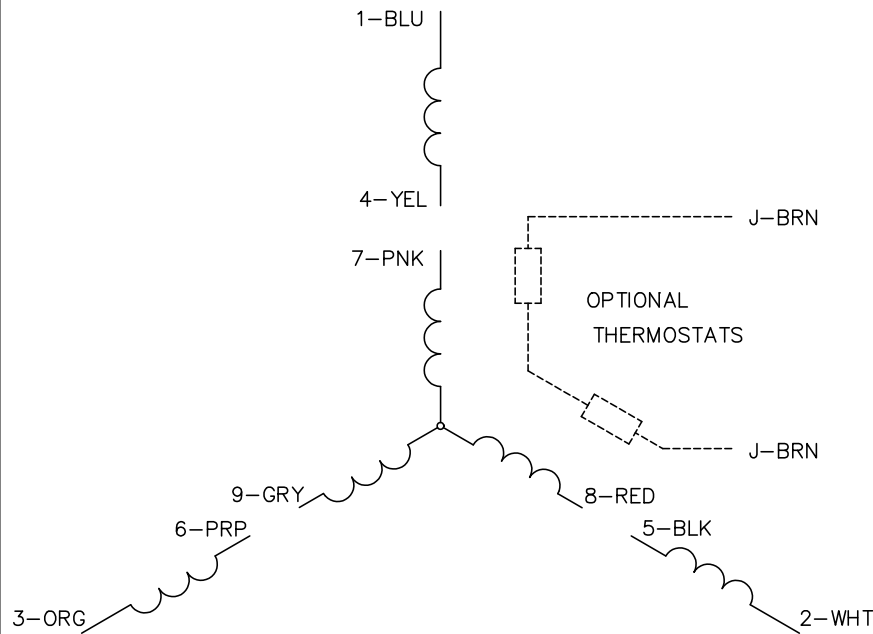
TORQUES (LB-FT): PO=65.64 PU=44.98 LR=54.05 LRA=44.82



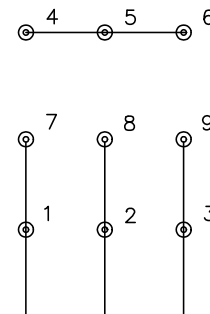
10/7/2024 ACPERF, record # 74890



CD0005

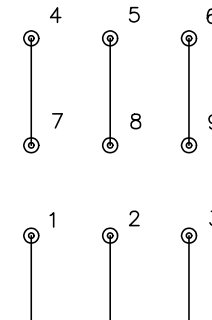


LOW VOLTAGE
(2Y)



LINE

HIGH VOLTAGE
(1Y)



LINE

NOTES:

1. INTERCHANGE ANY TWO LINE LEADS TO REVERSE ROTATION.
2. OPTIONAL THERMOSTATS ARE PROVIDED WHEN SPECIFIED.
3. ACTUAL NUMBER OF INTERNAL PARALLEL CIRCUITS MAY BE A MULTIPLE OF THOSE SHOWN ABOVE.
4. LEAD COLORS ARE OPTIONAL. LEADS MUST ALWAYS BE NUMBERED AS SHOWN.

REV. DESC: REVISE TO SHOW OPTIONAL COLORS			
REV. LTR: E	BY: JLP	REVISED: 01/19/99 10:15	TDR: 0171435
S00000		FILE: AAA00005140	MDL: -
		MTL: -	

BALDOR ELECTRIC Co.

3PH, DV, 9 LEADS

CD0005