

**BALDOR • RELIANCE**

---

# Customer information packet

## CDRX18264T

2HP, 1165//970RPM, 3PH, 60HZ, 184TC, XPFC, F1

Class - CLI GP C,D

Division - Division I

Copyright © All product information within this document is subject to ABB Motors and Mechanical Inc. copyright © protection, unless otherwise noted.

11/6/2024 6:42:05 PM

## Specifications

Enclosure	XPFC
Frame	184TC
Frame Material	Iron
Frequency	50.00 Hz 60.00 Hz
Haz Area Class and Group	CLI GP C,D
Haz Area Division	Division I
Motor Letter Type	Three Phase
Output @ Frequency	2.000 HP @ 60 HZ 1.500 HP @ 50 HZ
Phase	3
Synchronous Speed @ Frequency	1200 RPM @ 60 HZ
Voltage @ Frequency	460.0 V @ 60 HZ 190.0 V @ 50 HZ 230.0 V @ 60 HZ 380.0 V @ 50 HZ
Agency Approvals	UL CSA EEV
Ambient Temperature	40 °C
Auxillary Box	No Auxillary Box
Auxillary Box Lead Termination	None
Base Indicator	Rigid
Bearing Grease Type	Polyrex EM (-20F +300F)
Blower	None
Constant Torque Speed Range	6
Current @ Voltage	3.000 A @ 380.0 V 3.150 A @ 460.0 V 6.000 A @ 190.0 V 6.300 A @ 230.0 V
Design Code	B
Drip Cover	No Drip Cover
Duty Rating	CONT

## Part detail

Revision	B
Type	AC
Mech. spec.	
Base	
Status	PRD/A
Elec. spec.	06WGW970
Layout	06LYH515
Eff. date	07-27-2020
CD Diagram	CD0005
Poles	06
Leads	9#16
Proprietary	False
Created date	05-29-2019

Efficiency @ 100% Load	88.5 %
Electrically Isolated Bearing	Not Electrically Isolated
Feedback Device	NO FEEDBACK
Haz Area Temp Code	T3C
Heater Indicator	No Heater
High Voltage Full Load Amps	3.0 a
Insulation Class	F
Inverter Code	Inverter Duty
IP Rating	NONE
KVA Code	K
Lifting Lugs	Standard Lifting Lugs
Locked Bearing Indicator	Locked Bearing
Max Speed	1800 rpm
Motor Lead Termination	Flying Leads
Motor Standards	NEMA
Motor Type	0642M
Mounting Arrangement	F1
Number of Poles	6
Overall Length	18.31 IN
Power Factor	68
Product Family	General Purpose
Pulley Face Code	C-Face
Rodent Screen	None
RoHS Status	ROHS NON-COMPLIANT
Service Factor	1.00
Shaft Diameter	1.125 IN
Shaft Ground Indicator	No Shaft Grounding
Shaft Rotation	Reversible
Speed	1165 rpm
Speed Code	Single Speed
Starting Method	Direct on line
Thermal Device - Bearing	None
Thermal Device - Winding	Normally Closed Thermostat
Vibration Sensor Indicator	No Vibration Sensor

**Winding Thermal 1**

None

**Winding Thermal 2**

None

**Nameplate**

NP1401XPSLEV										
<b>NO.</b>		<b>CC</b>	010A							
<b>S/N</b>		<b>TEMP CODE</b>	T3C							
<b>SPEC.</b>	06-0000-0134		<b>INV.TYPE</b>	PWM						
<b>CAT.NO.</b>	CDRX18264T		<b>C HP FR</b>	60	<b>C HP TO</b>	90				
<b>HP</b>	2//1.5		<b>CT HZ FROM</b>	6	<b>CT HZ TO</b>	60				
<b>VOLTS</b>	230/460//190/380		<b>VT HZ FROM</b>	6	<b>VT HZ TO</b>	60				
<b>AMPS</b>	6.3/3.15//6/3		<b>MAG CUR</b>	3.6/1.8						
<b>RPM</b>	1165//970		<b>MX RPM</b>	1800						
<b>HZ</b>	60//50	<b>PH</b>	3	<b>CL</b>	F	<b>NOM.EFF.</b>	88.5			
<b>SER.F.</b>	1.00	<b>DES</b>	B	<b>SL HZ</b>	1.8	<b>WK2</b>	0.395			
<b>FRAME</b>	184TC	<b>RATING</b>	40C AMB-CONT							
	1.15 SF SINEWAVE									
	55C AMB @ 1.0SF					NEMA MG-1 PT 5,IP55				

**AC Induction Motor Performance Data**

Record # 75925

Typical performance - not guaranteed values

Winding: 06WGW970-R007		Type: 0642M	Enclosure: XPFC	
<b>Nameplate Data</b>			<b>460 V, 60 Hz: High Voltage Connection</b>	
Rated Output (HP)	2//1.5	Full Load Torque	9.06 LB-FT	
Volts	230/460//190/380	Start Configuration	direct on line	
Full Load Amps	6.3/3.15//6/3	Breakdown Torque	31.02 LB-FT	
R.P.M.	1165//970	Pull-up Torque	16.7 LB-FT	
Hz	60 Phase	3	Locked-rotor Torque	19.9 LB-FT
NEMA Design Code	B KVA Code	K	Starting Current	20.9 A
Service Factor (S.F.)		1	No-load Current	1.84 A
NEMA Nom. Eff.	88.5 Power Factor	68	Line-line Res. @ 25°C	5.12 Ω
Rating - Duty	40C AMB-CONT		Temp. Rise @ Rated Load	28°C
S.F. Amps			Temp. Rise @ S.F. Load	33°C
			Locked-rotor Power Factor	28.5
			Rotor inertia	0.395 LB-FT <sup>2</sup>

**Load Characteristics 460 V, 60 Hz, 2 HP**

% of Rated Load	25	50	75	100	125	150
Power Factor	32	49	61	68	73	75
Efficiency	75.2	83.8	86.2	87.2	86.2	85.3
Speed	1193	1186	1178	1170	1160	1149
Line amperes	1.98	2.28	2.7	3.18	3.72	4.37

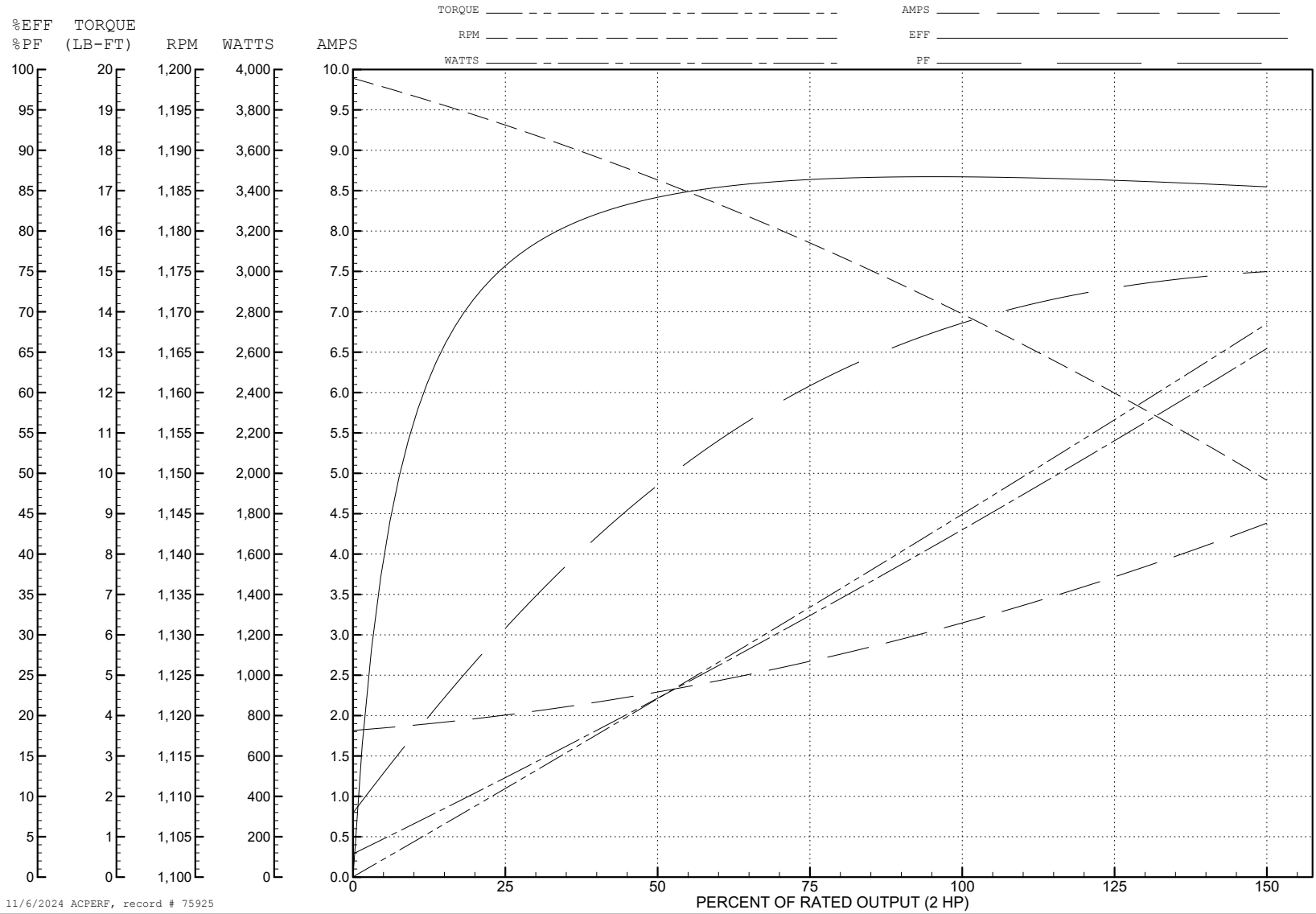
ABB Motors and Mechanical Inc.

WINDING # 06WGW970

Typical performance - not guaranteed values.

2 HP 3 PH 60 HZ 1170 RPM 460 V 0642M

TORQUES (LB-FT): PO=31.02 PU=16.7 LR=19.9 LRA=20.9



11/6/2024 ACPERF, record # 75925

**AC Induction Motor Performance Data**

Record # 75926

Typical performance - not guaranteed values

<b>Winding: 06WGW970-R007</b>		<b>Type: 0642M</b>		<b>Enclosure: XPFC</b>		
<b>Nameplate Data</b>			<b>380 V, 50 Hz: High Voltage Connection</b>			
<b>Rated Output (HP)</b>	2//1.5		<b>Full Load Torque</b>	8.17 LB-FT		
<b>Volts</b>	230/460//190/380		<b>Start Configuration</b>	direct on line		
<b>Full Load Amps</b>	6.3/3.15//6/3		<b>Breakdown Torque</b>	30 LB-FT		
<b>R.P.M.</b>	1165//970		<b>Pull-up Torque</b>	17.62 LB-FT		
<b>Hz</b>	60	<b>Phase</b>	3	<b>Locked-rotor Torque</b>	21 LB-FT	
<b>NEMA Design Code</b>	B		<b>KVA Code</b>	K	<b>Starting Current</b>	20.39 A
<b>Service Factor (S.F.)</b>	1		<b>No-load Current</b>	1.82 A		
<b>NEMA Nom. Eff.</b>	88.5	<b>Power Factor</b>	68	<b>Line-line Res. @ 25°C</b>	5.12 Ω	
<b>Rating - Duty</b>	40C AMB-CONT		<b>Temp. Rise @ Rated Load</b>	24°C		
			<b>Locked-rotor Power Factor</b>	32.2		
			<b>Rotor inertia</b>	0.395 LB-FT <sup>2</sup>		

**Load Characteristics 380 V, 50 Hz, 1.5 HP**

<b>% of Rated Load</b>	<b>25</b>	<b>50</b>	<b>75</b>	<b>100</b>	<b>125</b>	<b>150</b>
<b>Power Factor</b>	29	46	58	66	72	75
<b>Efficiency</b>	78	85.4	87.3	87.9	86.4	85.4
<b>Speed</b>	994	987	980	973	964	955
<b>Line amperes</b>	1.93	2.18	2.53	2.94	3.41	3.98



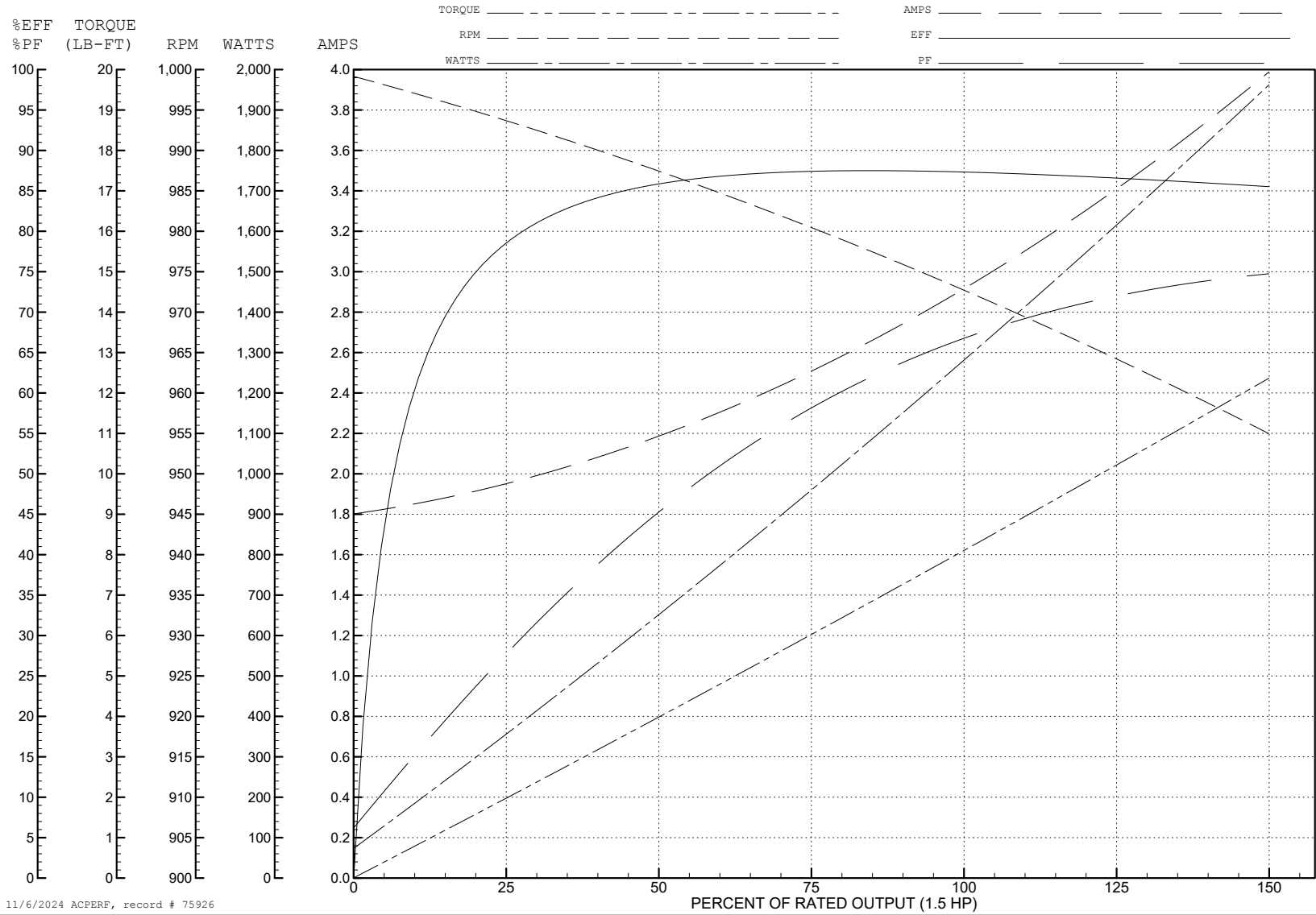
ABB Motors and Mechanical Inc.

WINDING # 06WGW970

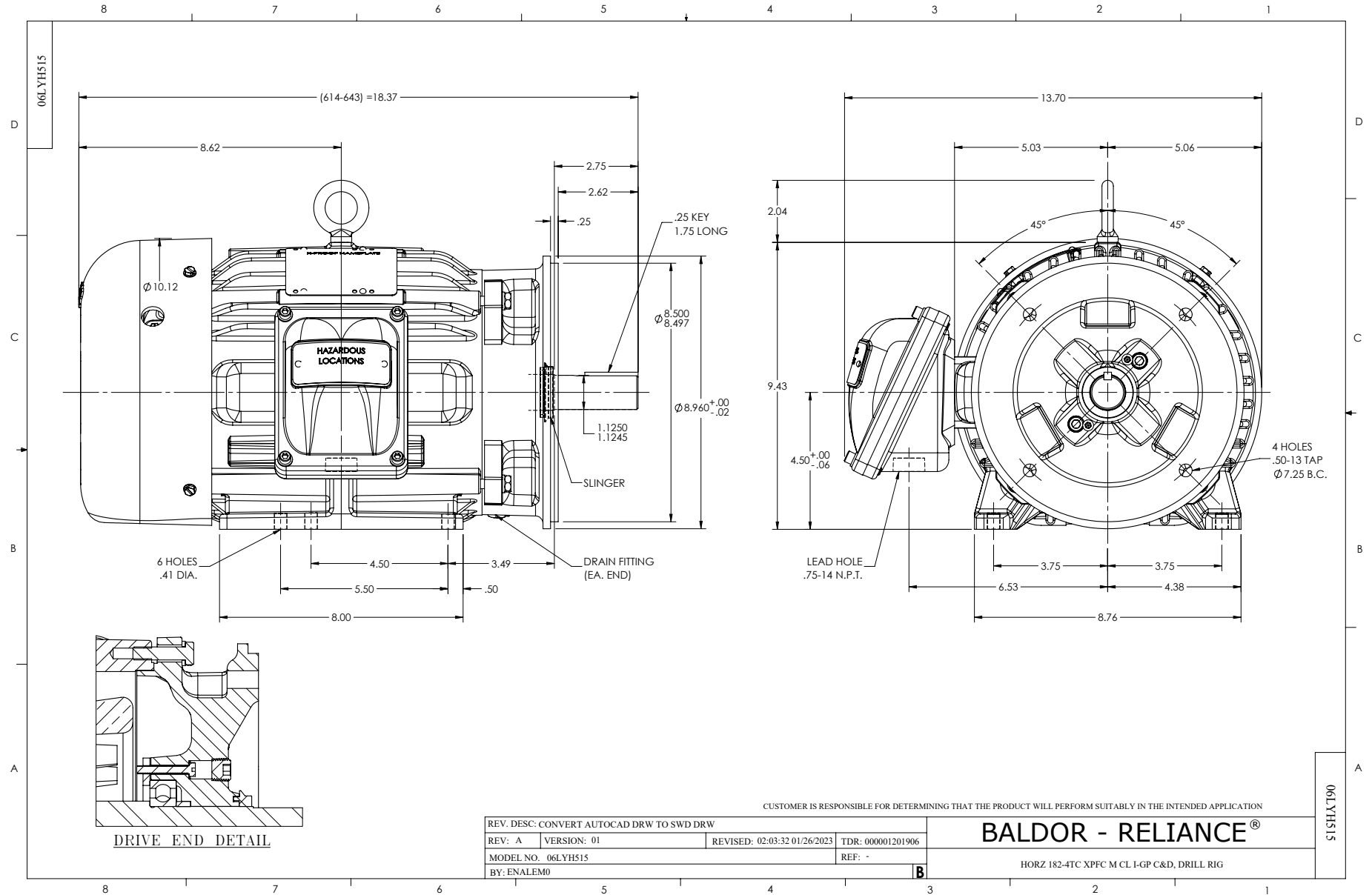
Typical performance - not guaranteed values.

1.5 HP 3 PH 50 HZ 973 RPM 380 V 0642M

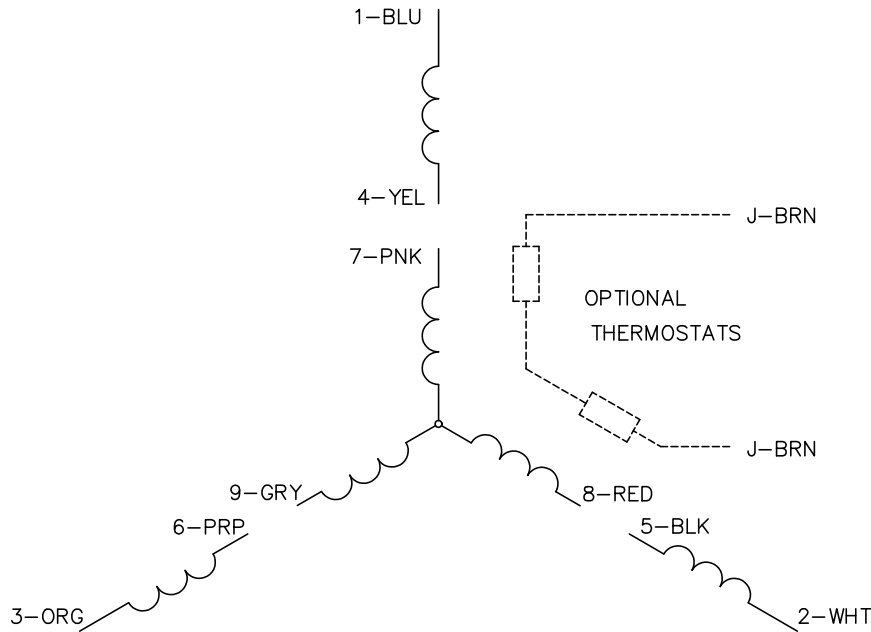
TORQUES (LB-FT): PO=30 PU=17.62 LR=21 LRA=20.39



11/6/2024 ACPERF, record # 75926



CD0005



LOW VOLTAGE  
(2Y)



LINE

HIGH VOLTAGE  
(1Y)



LINE

NOTES:

1. INTERCHANGE ANY TWO LINE LEADS TO REVERSE ROTATION.
2. OPTIONAL THERMOSTATS ARE PROVIDED WHEN SPECIFIED.
3. ACTUAL NUMBER OF INTERNAL PARALLEL CIRCUITS MAY BE A MULTIPLE OF THOSE SHOWN ABOVE.
4. LEAD COLORS ARE OPTIONAL. LEADS MUST ALWAYS BE NUMBERED AS SHOWN.

CD0005

REV. DESC: REVISE TO SHOW OPTIONAL COLORS			
REV. LTR: E	BY: JLP	REVISED: 01/19/99 10:15	TDR: 0171435
S00000		FILE: AAA00005140	MDL: -
		MTL: -	

**BALDOR ELECTRIC Co.**

3PH, DV, 9 LEADS