



Customer information packet

CDRX14164T

1//.75HP, 1155//970RPM, 3PH, 60//50HZ, 145TC

Class - CLI GP C,D

Division - Division I

Specifications

Enclosure	XPFC
Frame	145TC
Frame Material	Steel
Frequency	50.00 Hz 60.00 Hz
Haz Area Class and Group	CLI GP C,D
Haz Area Division	Division I
Motor Letter Type	Three Phase
Output @ Frequency	1.000 HP @ 60 HZ .750 HP @ 50 HZ
Phase	3
Synchronous Speed @ Frequency	1200 RPM @ 60 HZ
Voltage @ Frequency	190.0 V @ 50 HZ 230.0 V @ 60 HZ 380.0 V @ 50 HZ 460.0 V @ 60 HZ
Agency Approvals	CSA EEV UL
Ambient Temperature	40 °C
Auxillary Box	No Auxillary Box
Auxillary Box Lead Termination	None
Base Indicator	Rigid
Bearing Grease Type	Polyrex EM (-20F +300F)
Blower	None
Current @ Voltage	3.500 A @ 208.0 V 3.200 A @ 190.0 V 3.000 A @ 230.0 V 1.600 A @ 380.0 V 1.500 A @ 460.0 V
Design Code	B
Drip Cover	No Drip Cover
Duty Rating	CONT

Part detail

Revision	B
Type	AC
Mech. spec.	35X732
Base	
Status	PRD/A
Elec. spec.	35WGG019
Layout	35LYX732
Eff. date	03-08-2024
CD Diagram	CD0005
Poles	06
Leads	9#18
Proprietary	False
Created date	02-23-2023

Efficiency @ 100% Load	82.5 %
Electrically Isolated Bearing	Not Electrically Isolated
Feedback Device	NO FEEDBACK
Front Shaft Indicator	None
Heater Indicator	No Heater
High Voltage Full Load Amps	1.5 a
Insulation Class	F
Inverter Code	Inverter Duty
KVA Code	J
Lifting Lugs	No Lifting Lugs
Locked Bearing Indicator	Locked Bearing
Max Speed	1800 rpm
Motor Lead Quantity/Wire Size	9 @ 18 AWG
Motor Lead Termination	Flying Leads
Motor Standards	NEMA
Motor Type	3526M
Mounting Arrangement	F1
Number of Poles	6
Overall Length	15.21 IN
Power Factor	67
Product Family	Hazardous Location Motor
Pulley End Bearing Type	Ball
Pulley Face Code	C-Face
Pulley Shaft Indicator	Standard
Rodent Screen	None
RoHS Status	ROHS NON-COMPLIANT
Service Factor	1.00
Shaft Diameter	0.875 IN
Shaft Ground Indicator	No Shaft Grounding
Shaft Rotation	Reversible
Speed	1155 rpm 970 rpm
Speed Code	Single Speed
Starting Method	Direct on line

Thermal Device - Bearing	None
Thermal Device - Winding	Normally Closed Thermostat
Vibration Sensor Indicator	No Vibration Sensor
Winding Thermal 1	None
Winding Thermal 2	None

Nameplate

NP1401XPSL									
NO.		CC							
S/N		TEMP CODE	T3C						
SPEC.	35X732G019	INV.TYPE	PWM						
CAT.NO.	CDRX14164T	C HP FR	60	C HP TO	90				
HP	1//.75	CT HZ FROM	6	CT HZ TO	60				
VOLTS	230/460//190/380	VT HZ FROM	6	VT HZ TO	60				
AMPS	3/1.5//3.2/1.6	MAG CUR	2/1						
RPM	1155//970	MX RPM	1800						
HZ	60//50	PH	3	CL	F	NOM.EFF.	82.5		
SER.F.	1.00	DES	B	SL HZ	1.5	WK2	0.189		
FRAME	145TC	RATING	40C AMB-CONT						
	55C AMB @ 1.0 SF								
	1.15 SF SINEWAVE			NEMA MG-1 PT 5,IP55					

AC Induction Motor Performance Data

Record # 73789

Typical performance - not guaranteed values

Winding: 35WGM497-R087		Type: 3526M	Enclosure: XPFC			
Nameplate Data			460 V, 60 Hz: High Voltage Connection			
Rated Output (HP)	1//.75		Full Load Torque	4.51 LB-FT		
Volts	230/460//190/380		Start Configuration	direct on line		
Full Load Amps	3.6/1.8//3.4/1.7		Breakdown Torque	15.23 LB-FT		
R.P.M.	1155//960		Pull-up Torque	11.1 LB-FT		
Hz	60//50	Phase	3	Locked-rotor Torque	11.9 LB-FT	
NEMA Design Code	B		KVA Code	K	Starting Current	10.8 A
Service Factor (S.F.)	1				No-load Current	1.21 A
NEMA Nom. Eff.	82.5	Power Factor	64		Line-line Res. @ 25°C	16.1 Ω
Rating - Duty	40C AMB-CONT				Temp. Rise @ Rated Load	48°C
					Locked-rotor Power Factor	41.5
					Rotor inertia	0.155 LB-FT ²

Load Characteristics 460 V, 60 Hz, 1 HP

% of Rated Load	25	50	75	100	125	150
Power Factor	28	44	56	65	71	75
Efficiency	66	77	80.7	81.4	80.9	79.5
Speed	1190	1180	1170	1158	1145	1129
Line amperes	1.25	1.37	1.54	1.77	2.04	2.35

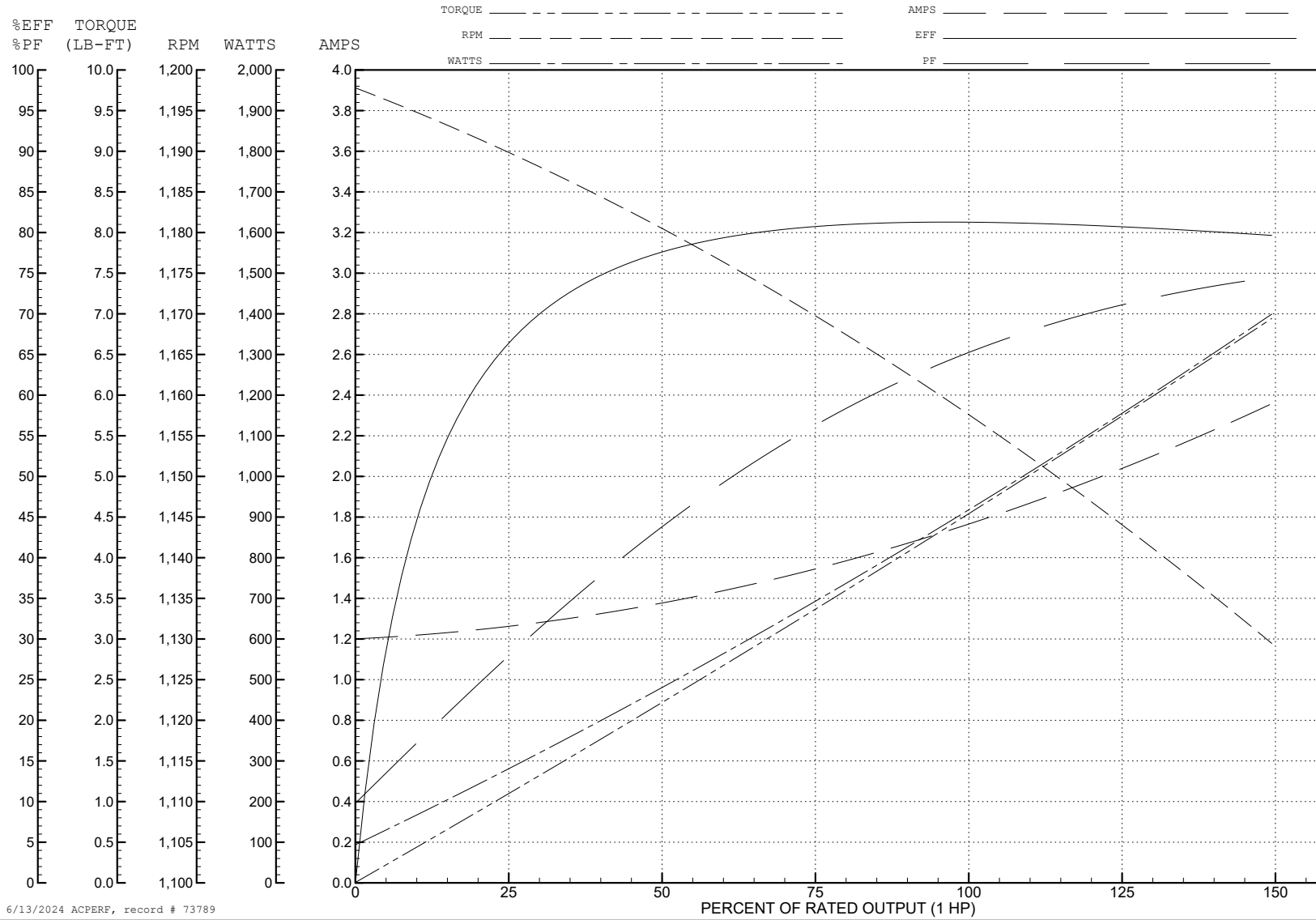
ABB Motors and Mechanical Inc.

WINDING # 35WGM497

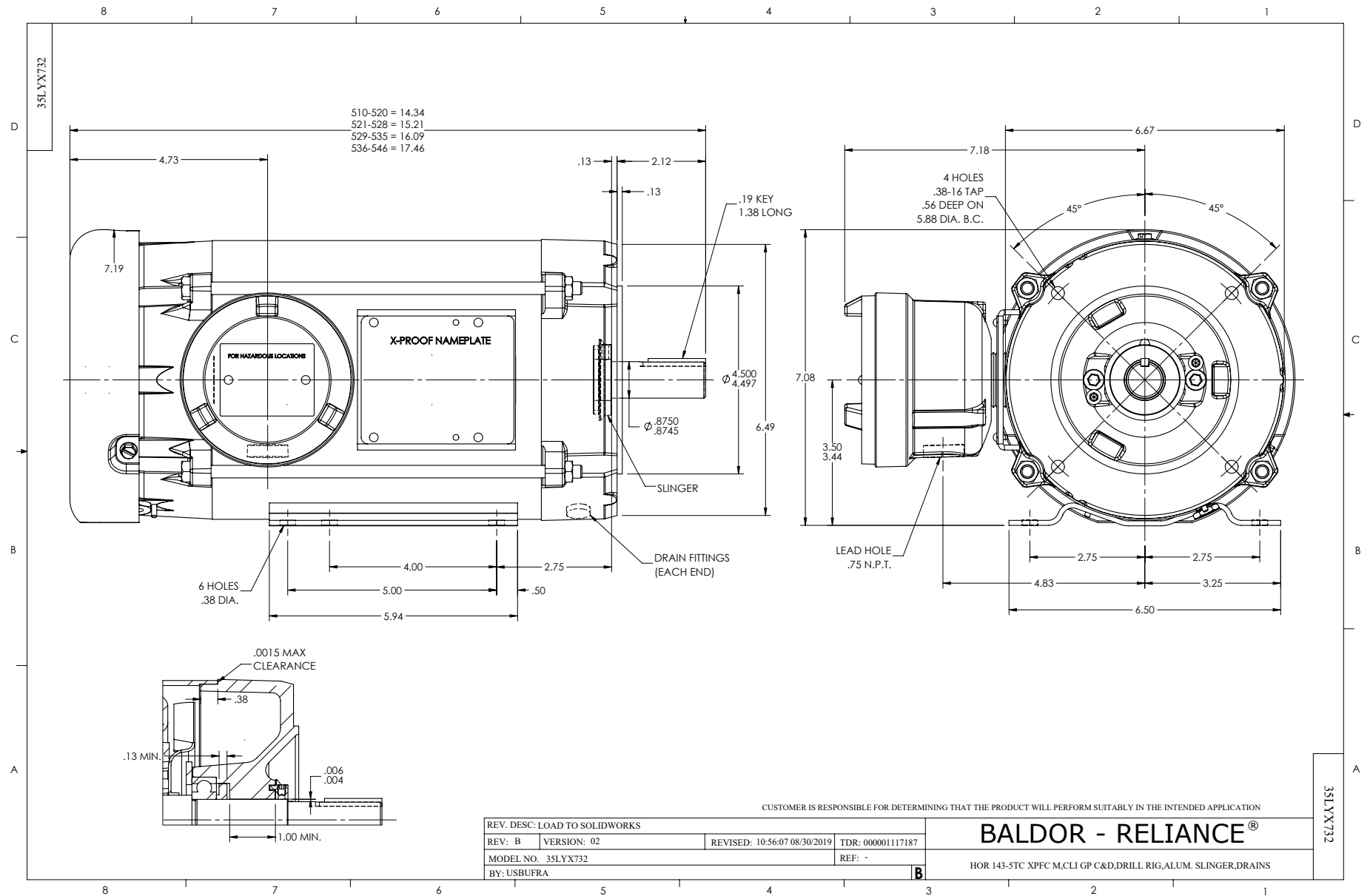
1 HP 3 PH 60 HZ 1158 RPM 460 V 3526M

Typical performance - not guaranteed values.

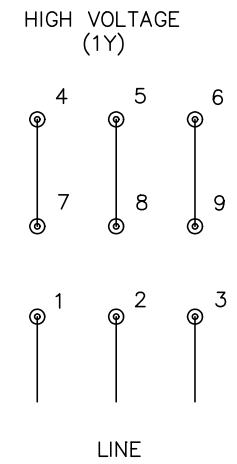
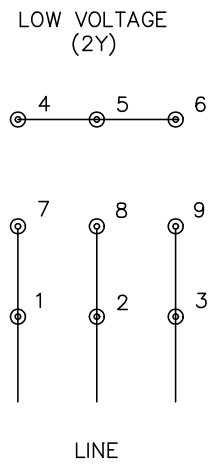
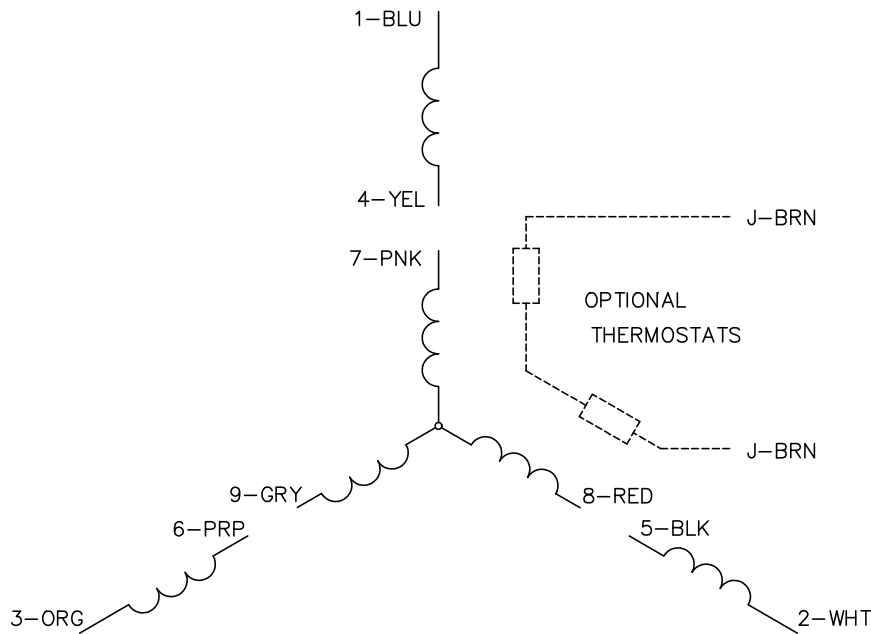
TORQUES (LB-FT): PO=15.23 PU=11.1 LR=11.9 LRA=10.8



6/13/2024 ACPERF, record # 73789



CD0005



NOTES:

1. INTERCHANGE ANY TWO LINE LEADS TO REVERSE ROTATION.
2. OPTIONAL THERMOSTATS ARE PROVIDED WHEN SPECIFIED.
3. ACTUAL NUMBER OF INTERNAL PARALLEL CIRCUITS MAY BE A MULTIPLE OF THOSE SHOWN ABOVE.
4. LEAD COLORS ARE OPTIONAL. LEADS MUST ALWAYS BE NUMBERED AS SHOWN.

REV. DESC: REVISE TO SHOW OPTIONAL COLORS			
REV. LTR: E	BY: JLP	REVISED: 01/19/99 10:15	TDR: 0171435
S00000		FILE: AAA00005140	MDL: -
		MTL: -	

BALDOR ELECTRIC Co.

3PH, DV, 9 LEADS

CD0005