

ABB BALDOR RELIANCE III

Customer information packet

CDRX14144T

1//.75HP, 1770//1475RPM, 3PH, 60//50HZ, 143T

Class - CLI GP C,D

Division - Division I

Specifications

Enclosure	XPFC
Frame	143TC
Frame Material	Steel
Frequency	50.00 Hz 60.00 Hz
Haz Area Class and Group	CLI GP C,D
Haz Area Division	Division I
Motor Letter Type	Three Phase
Output @ Frequency	.750 HP @ 50 HZ 1.000 HP @ 60 HZ
Phase	3
Synchronous Speed @ Frequency	1800 RPM @ 60 HZ
Voltage @ Frequency	230.0 V @ 60 HZ 190.0 V @ 50 HZ 460.0 V @ 60 HZ 380.0 V @ 50 HZ
Agency Approvals	CSA EEV UL
Ambient Temperature	40 °C
Auxiliary Box	NO AUXILLARY BOX
Auxiliary Box Lead Termination	None
Base Indicator	Rigid
Bearing Grease Type	Polyrex EM (-20F +300F)
Blower	None
Constant Torque Speed Range	6
Current @ Voltage	3.200 A @ 208.0 V 3.200 A @ 230.0 V 3.080 A @ 190.0 V 1.600 A @ 460.0 V 1.540 A @ 380.0 V
Design Code	B
Drip Cover	No Drip Cover

Part Detail

Revision	B
Type	AC
Mech. spec.	
Base	
Status	PRD/A
Elec. spec.	35WGG004
Layout	35LYX732
Eff. date	01-10-2023
CD Diagram	CD0005
Poles	04
Leads	9#18
Proprietary	False
Created date	01-04-2022

Duty Rating	CONT
Efficiency @ 100% Load	85.5 %
Electrically Isolated Bearing	Not Electrically Isolated
Feedback Device	NO FEEDBACK
Haz Area Temp Code	T3C
Heater Indicator	No Heater
High Voltage Full Load Amps	1.5 a
Insulation Class	F
Inverter Code	Inverter Duty
KVA Code	N
Lifting Lugs	No Lifting Lugs
Locked Bearing Indicator	Locked Bearing
Max Speed	2700 rpm
Motor Lead Termination	Flying Leads
Motor Standards	NEMA
Motor Type	3520M
Mounting Arrangement	F1
Number of Poles	4
Overall Length	14.34 IN
Power Factor	69
Product Family	General Purpose
Pulley Face Code	C-Face
Rodent Screen	None
Service Factor	1.00
Shaft Diameter	0.875 IN
Shaft Ground Indicator	No Shaft Grounding
Shaft Rotation	Reversible
Speed	1770 rpm
Speed Code	Single Speed
Starting Method	Direct on line
Thermal Device - Bearing	None
Thermal Device - Winding	Normally Closed Thermostat
Vibration Sensor Indicator	No Vibration Sensor
Winding Thermal 1	None

Winding Thermal 2

None

Nameplate

NP1401XPSLEV

NO.		CC	010A				
S/N		TEMP CODE	T3C				
SPEC.	35-0000-1329	INV.TYPE	PWM				
CAT.NO.	CDRX14144T	C HP FR	60	C HP TO	90		
HP	1//.75	CT HZ FROM	6	CT HZ TO	60		
VOLTS	230/460//190/380	VT HZ FROM	6	VT HZ TO	60		
AMPS	3.2/1.6//3.08/1.54	MAG CUR	2.2/1.1				
RPM	1770//1475	MX RPM	2700				
HZ	60//50	PH	3	CL	F	NOM.EFF.	85.5
SER.F.	1.00	DES	B	SL HZ	1	WK2	0.144
FRAME	143TC	RATING	40C AMB-CONT				
	55C AMB @ 1.0 SF						
	1.15 SF SINEWAVE		NEMA MG-1 PT 5,IP55				

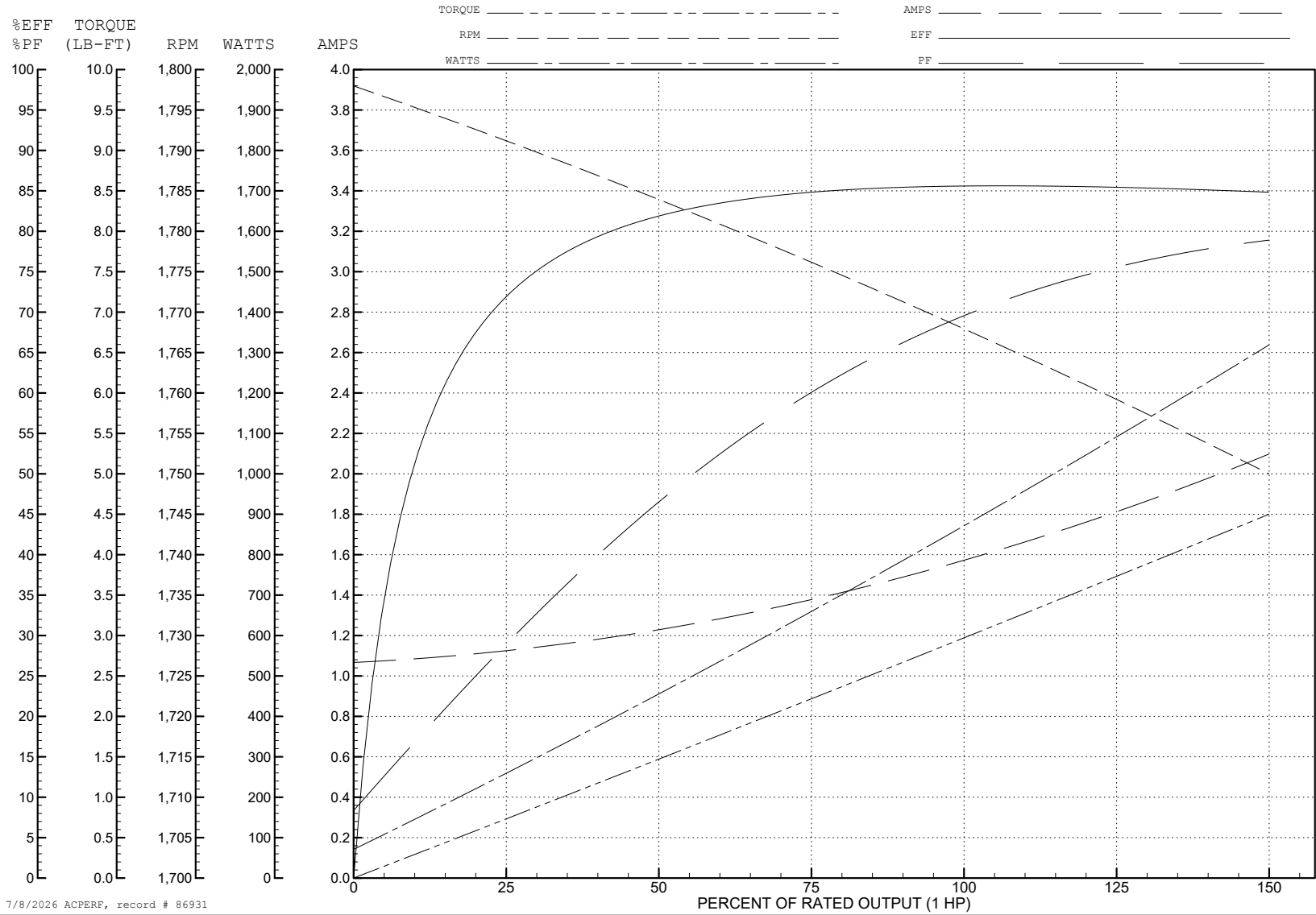
ABB Motors and Mechanical Inc.

WINDING # 35WGG004

Typical performance - not guaranteed values.

1 HP 3 PH 60 HZ 1768 RPM 460 V 3520M

TORQUES (LB-FT): PO=13.68 PU=7.85 LR=9.01 LRA=14.13



7/8/2026 ACPERF, record # 86931

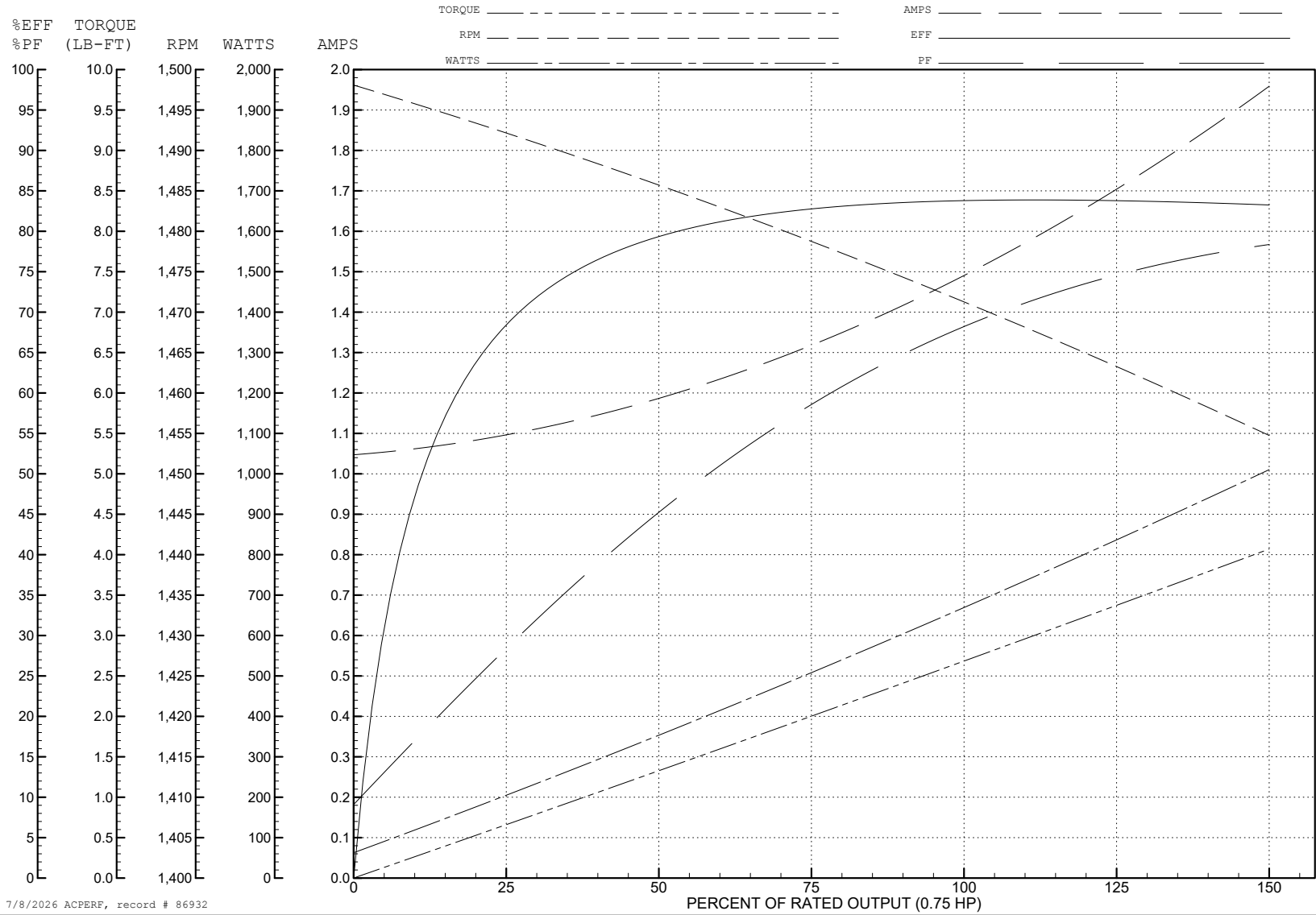
ABB Motors and Mechanical Inc.

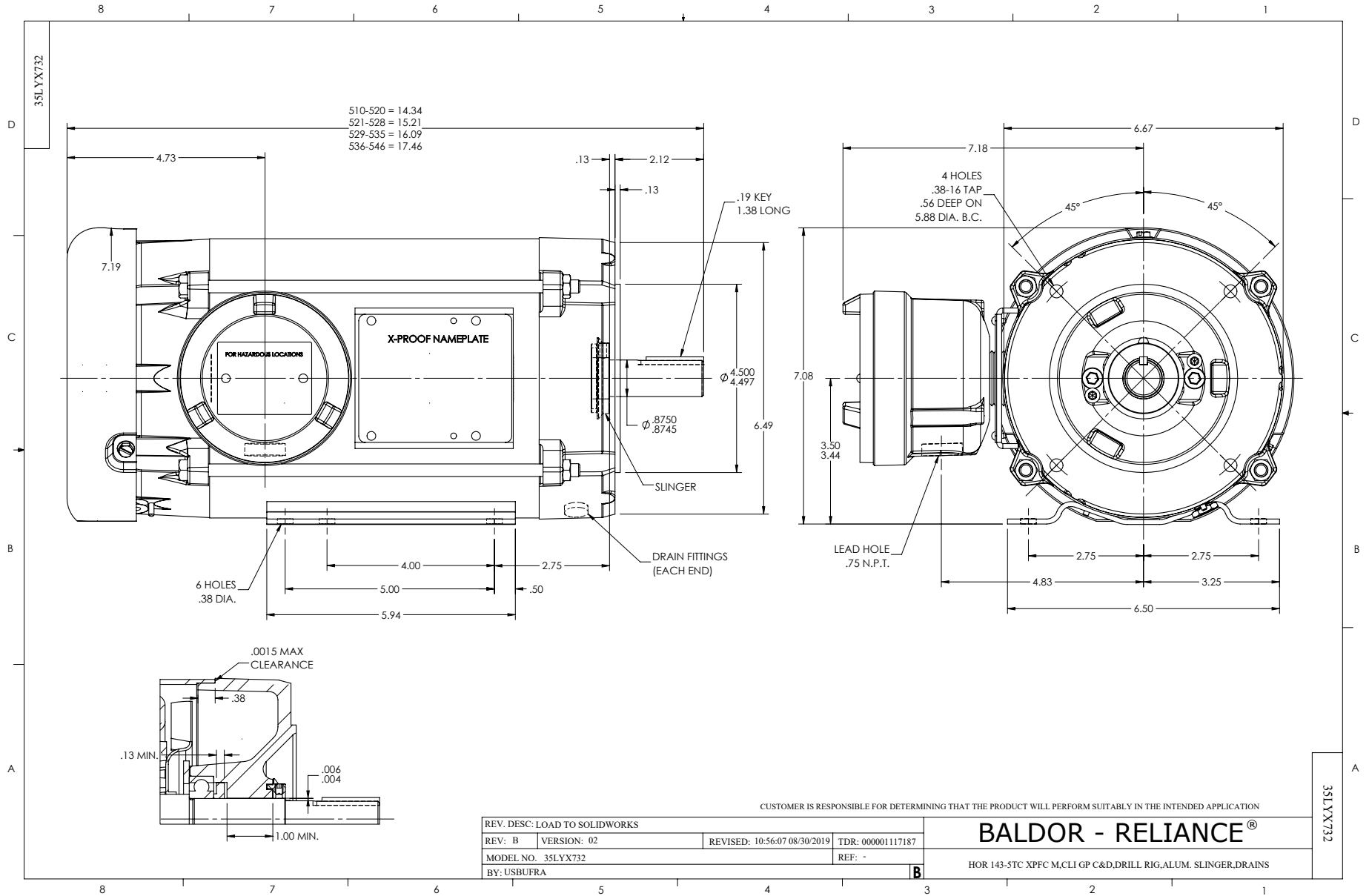
WINDING # 35WGG004

0.75 HP 3 PH 50 HZ 1471 RPM 380 V 3520M

Typical performance - not guaranteed values.

TORQUES (LB-FT): PO=12.31 PU=7.45 LR=8.55 LRA=13.12

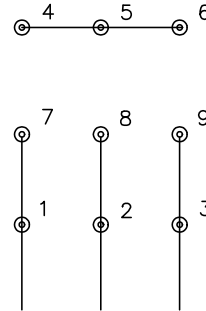




CD0005

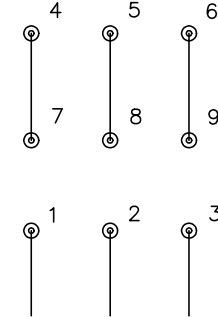


LOW VOLTAGE
(2Y)



LINE

HIGH VOLTAGE
(1Y)



LINE

NOTES:

1. INTERCHANGE ANY TWO LINE LEADS TO REVERSE ROTATION.
2. OPTIONAL THERMOSTATS ARE PROVIDED WHEN SPECIFIED.
3. ACTUAL NUMBER OF INTERNAL PARALLEL CIRCUITS MAY BE A MULTIPLE OF THOSE SHOWN ABOVE.
4. LEAD COLORS ARE OPTIONAL. LEADS MUST ALWAYS BE NUMBERED AS SHOWN.

CD0005

REV. DESC: REVISE TO SHOW OPTIONAL COLORS

REV. LTR: E BY: JLP REVISED: 01/19/99 10:15 TDR: 0171435

500000

FILE: AAA00005140

MDL: -

MTL: -

BALDOR ELECTRIC Co.

3PH, DV, 9 LEADS