

ABB BALDOR RELIANCE III

Customer information packet

CDRX14124T

1HP, 3450//2875RPM, 3PH, 60/50HZ, 143TC, XPFC

Class - CLI GP C,D

Division - Division I

Specifications

Enclosure	XPFC
Frame	143TC
Frame Material	Steel
Frequency	50.00 Hz 60.00 Hz
Haz Area Class and Group	CLI GP C,D
Haz Area Division	Division I
Motor Letter Type	Three Phase
Output @ Frequency	1.000 HP @ 60 HZ .750 HP @ 50 HZ
Phase	3
Synchronous Speed @ Frequency	3600 RPM @ 60 HZ
Voltage @ Frequency	460.0 V @ 60 HZ 190.0 V @ 50 HZ 230.0 V @ 60 HZ 380.0 V @ 50 HZ
Agency Approvals	UL CSA EEV
Ambient Temperature	40 °C
Auxiliary Box	NO AUXILLARY BOX
Auxiliary Box Lead Termination	None
Base Indicator	Rigid
Bearing Grease Type	Polyrex EM (-20F +300F)
Blower	None
Constant Torque Speed Range	6
Current @ Voltage	1.300 A @ 380.0 V 1.400 A @ 460.0 V 2.600 A @ 190.0 V 2.800 A @ 230.0 V
Design Code	B
Drip Cover	No Drip Cover
Duty Rating	CONT

Part Detail

Revision	-
Type	AC
Mech. spec.	
Base	
Status	PRD/A
Elec. spec.	35WGS921
Layout	35LYX732
Eff. date	06-19-2019
CD Diagram	CD0005
Poles	02
Leads	9#18
Proprietary	False
Created date	06-13-2019

Efficiency @ 100% Load	84.0 %
Electrically Isolated Bearing	Not Electrically Isolated
Feedback Device	NO FEEDBACK
Haz Area Temp Code	T3C
Heater Indicator	No Heater
High Voltage Full Load Amps	1.3 a
Insulation Class	F
Inverter Code	Inverter Duty
IP Rating	NONE
KVA Code	L
Lifting Lugs	No Lifting Lugs
Locked Bearing Indicator	Locked Bearing
Max Speed	5400 rpm
Motor Lead Termination	Flying Leads
Motor Standards	NEMA
Motor Type	3516M
Mounting Arrangement	F1
Number of Poles	2
Overall Length	14.34 IN
Power Factor	82
Product Family	General Purpose
Pulley Face Code	C-Face
Rodent Screen	None
RoHS Status	ROHS NON-COMPLIANT
Service Factor	1.00
Shaft Diameter	0.875 IN
Shaft Ground Indicator	No Shaft Grounding
Shaft Rotation	Reversible
Speed	3450 rpm
Speed Code	Single Speed
Starting Method	Direct on line
Thermal Device - Bearing	None
Thermal Device - Winding	Normally Closed Thermostat
Vibration Sensor Indicator	No Vibration Sensor

Winding Thermal 1

None

Winding Thermal 2

None

Nameplate

NP1401XPSLEV

NO.		CC	010A		
S/N		TEMP CODE	T3C		
SPEC.	35-0000-0185	INV.TYPE	PWM		
CAT.NO.	CDRX14124T	C HP FR	60	C HP TO	90
HP	1//.75	CT HZ FROM	6	CT HZ TO	60
VOLTS	230/460//190/380	VT HZ FROM	6	VT HZ TO	60
AMPS	2.8/1.4//2.6/1.3	MAG CUR	1.4/.7		
RPM	3450//2875	MX RPM	5400		
HZ	60//50	PH	3	CL	F
		NOM.EFF.	84		
SER.F.	1.00	DES	B	SL HZ	2
		WK2	0.036		
FRAME	143TC	RATING	40C AMB-CONT		
	55C AMB @ 1.0 SF				
	1.15 SF SINEWAVE		NEMA MG-1 PT 5,IP55		

ABB Motors and Mechanical Inc.

WINDING # 35WGS921

Typical performance - not guaranteed values.

1 HP 3 PH 60 HZ 3479 RPM 460 V 3516M

TORQUES (LB-FT): PO=6.5 PU=4.8 LR=5.7 LRA=12.1

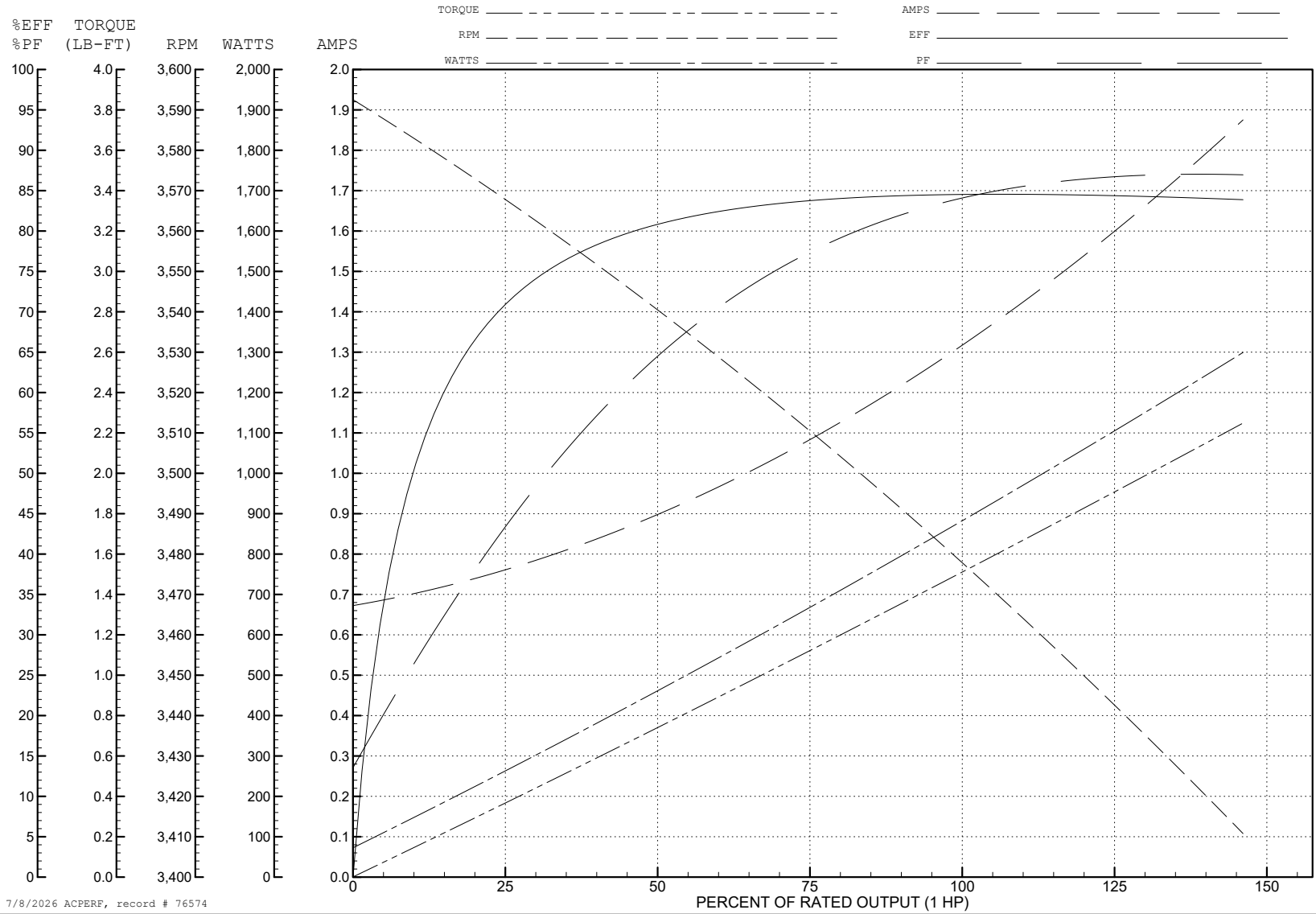


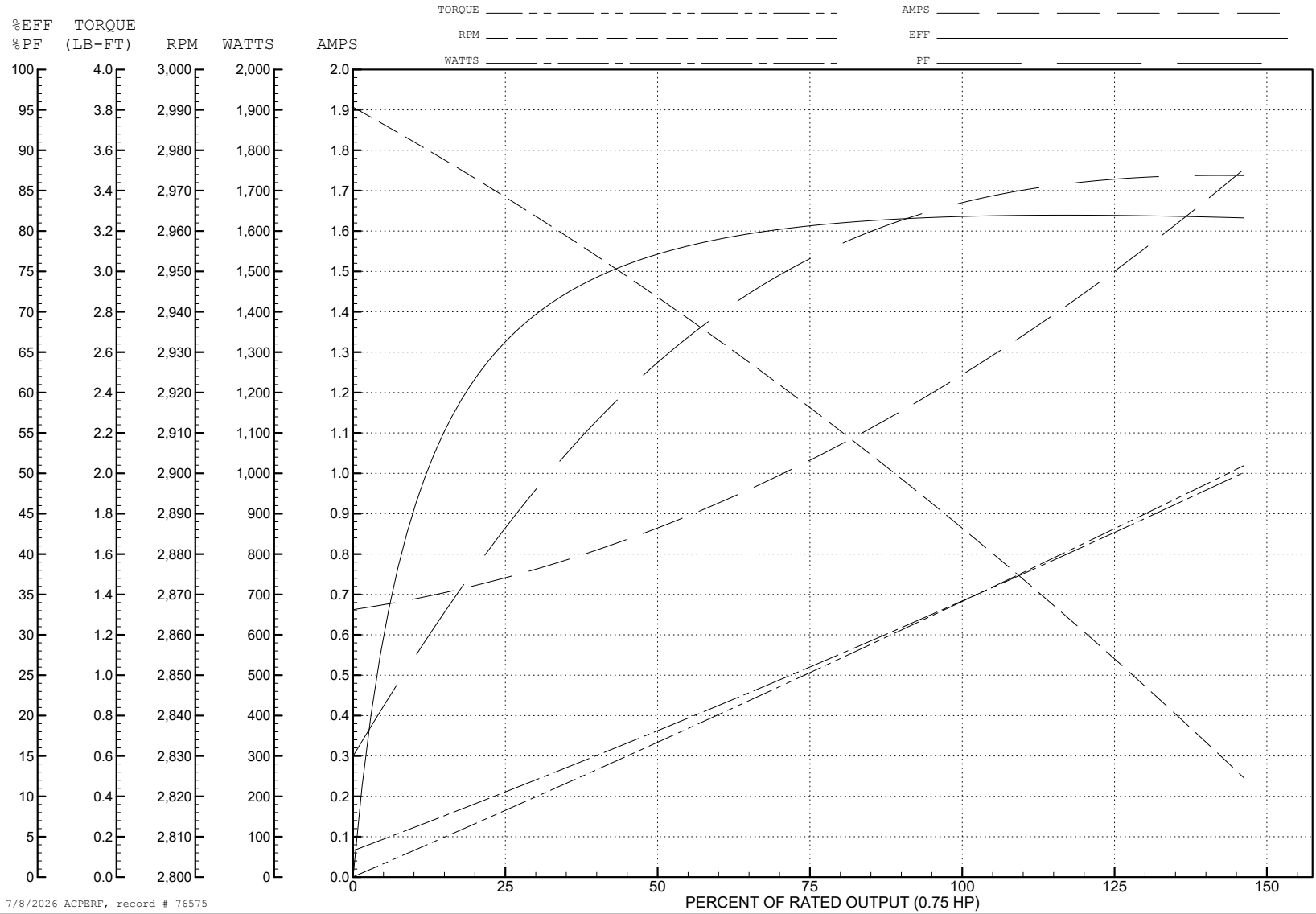
ABB Motors and Mechanical Inc.

WINDING # 35WGS921

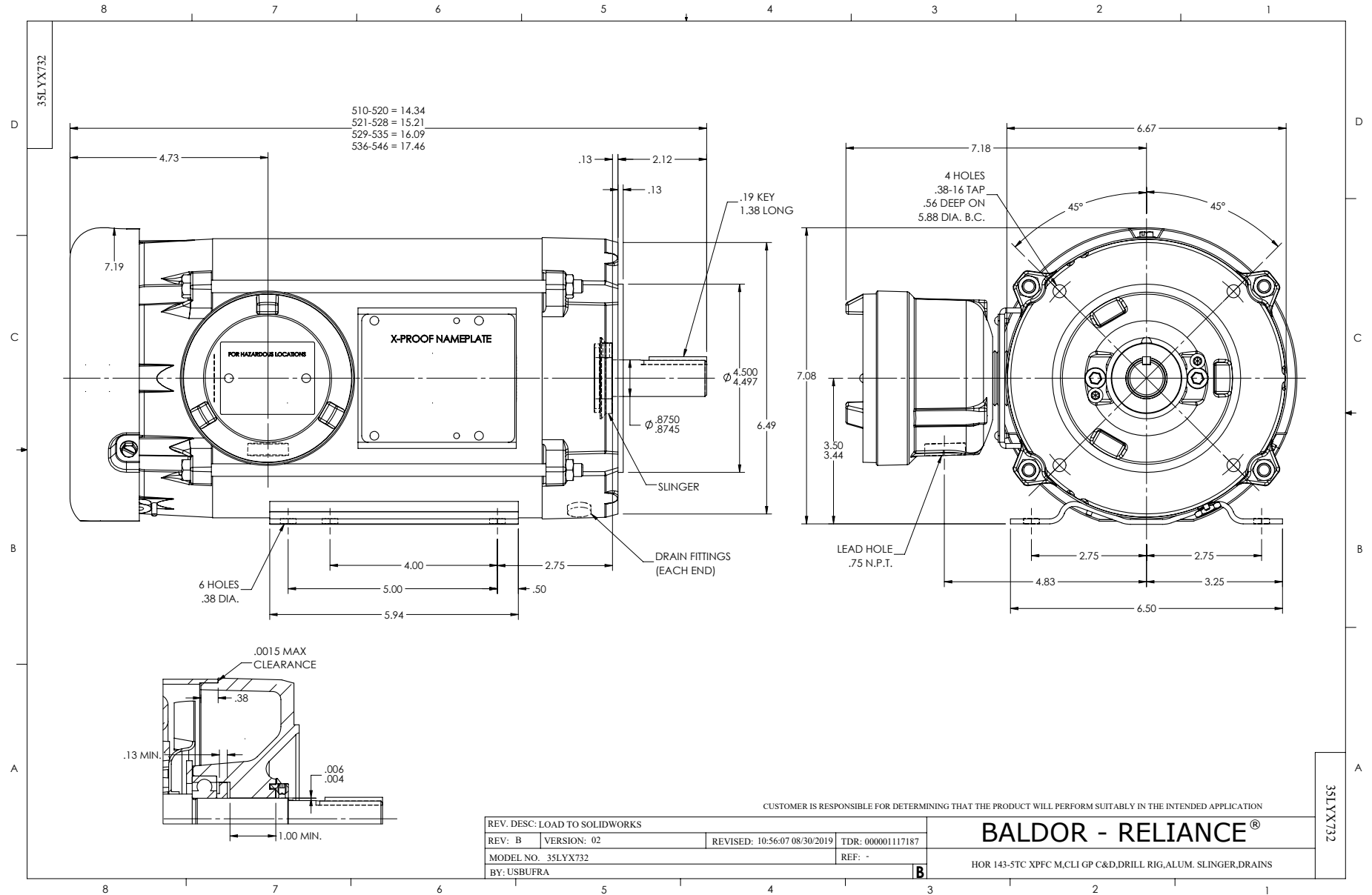
0.75 HP 3 PH 50 HZ 2887 RPM 380 V 3516M

Typical performance - not guaranteed values.

TORQUES (LB-FT): PO=5.94 PU=4.9 LR=5.82 LRA=11.24



7/8/2026 ACPERF, record # 76575



CD0005

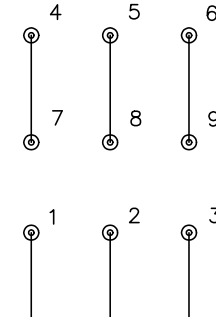


LOW VOLTAGE
(2Y)



LINE

HIGH VOLTAGE
(1Y)



LINE

NOTES:

1. INTERCHANGE ANY TWO LINE LEADS TO REVERSE ROTATION.
2. OPTIONAL THERMOSTATS ARE PROVIDED WHEN SPECIFIED.
3. ACTUAL NUMBER OF INTERNAL PARALLEL CIRCUITS MAY BE A MULTIPLE OF THOSE SHOWN ABOVE.
4. LEAD COLORS ARE OPTIONAL. LEADS MUST ALWAYS BE NUMBERED AS SHOWN.

CD0005

REV. DESC: REVISE TO SHOW OPTIONAL COLORS			
REV. LTR: E	BY: JLP	REVISED: 01/19/99 10:15	TDR: 0171435
S00000		FILE: AAA00005140	MDL: -
		MTL: -	

BALDOR ELECTRIC Co.

3PH, DV, 9 LEADS