



Customer information packet

CDPX3575

1.5HP, 1750RPM, DC, 145TC, X3548P, XPFC, F1

Class - CLI GP D; CLII GP F,G

Division -

Specifications

Armature Voltage	180 V
Base Speed	1750 rpm
Enclosure	XPFC
Frame	145TC
Frame Material	Steel
Haz Area Class and Group	CLI GP D; CLII GP F,G
Output Power	1.500 HP
Agency Approvals	CSA UL UR
Ambient Temperature	40 °C
Armature Current	7.1 a
Armature Inertia	40.456 lb-ft ²
Base Indicator	Rigid
Bearing Grease Type	Polyrex EM (-20F +300F)
Drip Cover	No Drip Cover
Duty Rating	CONT
Feedback Device	NO FEEDBACK
Haz Area Temp Code	T3C
Heater Indicator	No Heater
Lifting Lugs	No Lifting Lugs
Motor Lead Exit	Ko Box
Motor Lead Quantity/Wire Size	2 @ 14 AWG
Motor Lead Termination	Flying Leads
Motor Standards	NEMA
Mounting Arrangement	F1
Overall Length	19.43 IN
Product Family	General Purpose
Pulley End Bearing Type	Sealed Bearing
Service Factor	1.00
Shaft Diameter	0.875 IN
Shaft Extension Location	Pulley End

Part detail

Revision	AA
Type	DC
Mech. spec.	35P548
Base	
Status	PRD/A
Elec. spec.	35WGZ170
Layout	35LYP548
Eff. date	06-23-2023
CD Diagram	CD0194
Poles	00
Leads	
Proprietary	False
Created date	01-01-0001

Shaft Ground Indicator

No Shaft Grounding

Shaft Rotation

Reversible

Shaft Slinger Indicator

No Slinger

Nameplate

NP0727XPSL			
NO.			
SER.			
SPEC.	35P548Z170G1		
CAT.NO.	CDPX3575	T. CODE	T3C
HP	1.5	ENCL	XPFC
RPM	1750		
FRAME	145TC	TYPE	3548P
ARM V	180	ARM A	7.1
FLD V		FLD A	
INSUL	F	AMB.	40
DUTY	CONT	SUPPLY	K
BRG/DE	6205	BRG/ODE	6203
BRUSHES	2/BP5035AB01		
BLANK			

DC Motor Performance Data

Record # 1413

Typical performance - not guaranteed values

Winding: 35WGZ170-R010		Type: 3548P	Enclosure: XPFC
Nameplate Data		General Characteristics	
Rated Output (HP)	1.5	Armature Resistance @ 25°C	0.795 Ω
R.P.M.	1750		
Armature Volts	180		
Armature Amps	7.1		
Field Volts		Armature Inductance	11.29 mH
Field Amps			
Rating - Duty	40C AMB-CONT		
Power Supply Code	K		

Load Characteristics at 180 Armature Volts

Load Point	1	2	3	4	5	6	7
Armature Amps	0.2	2.4	4.7	6.8	9	11.3	13.5
R.P.M.	1806	1796	1770	1741	1707	1671	1663
Torque (LB-FT)	0	1.5	3	4.5	6	7.5	9

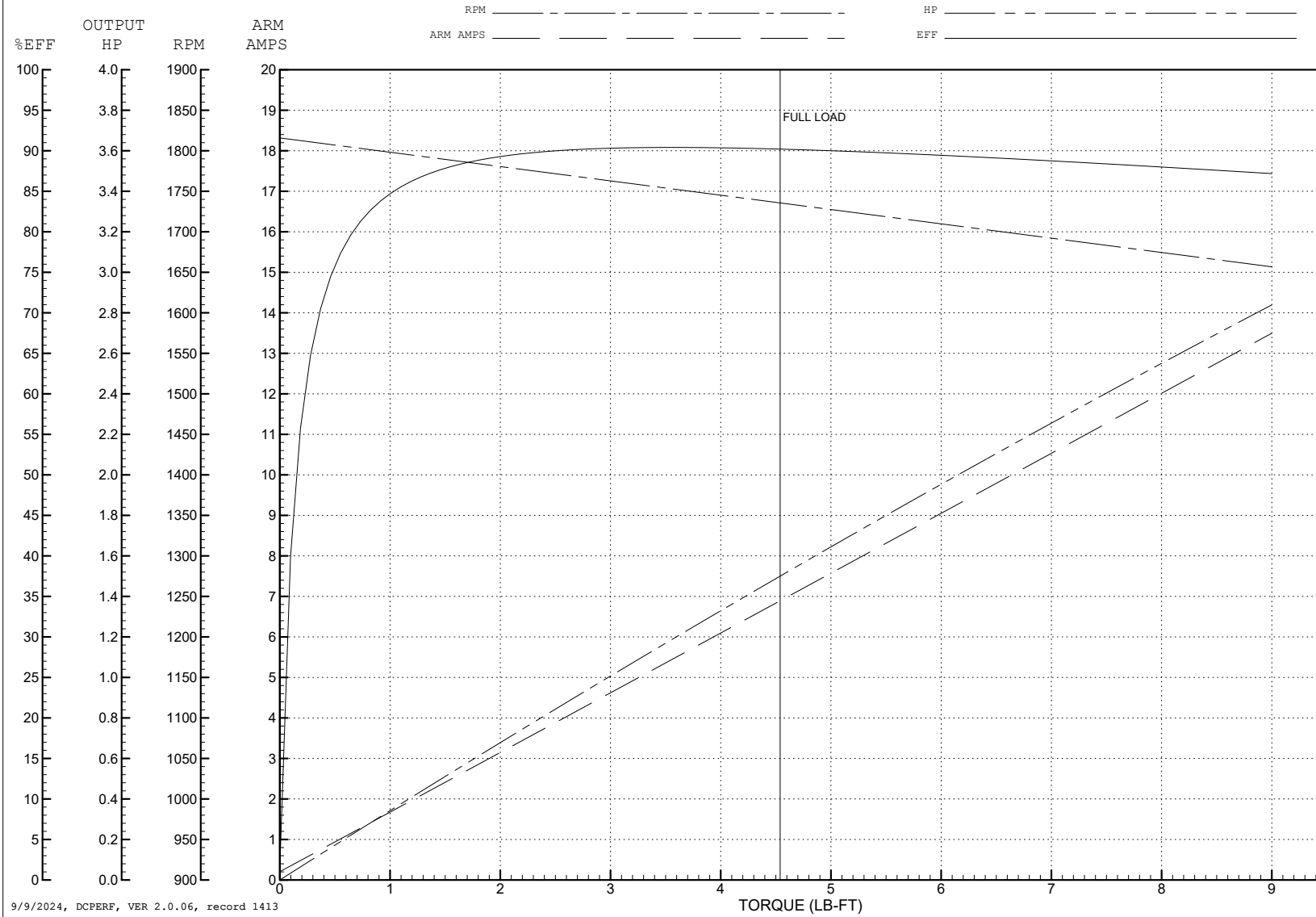
ABB Motors and Mechanical Inc.

WINDING # 35WGZ170

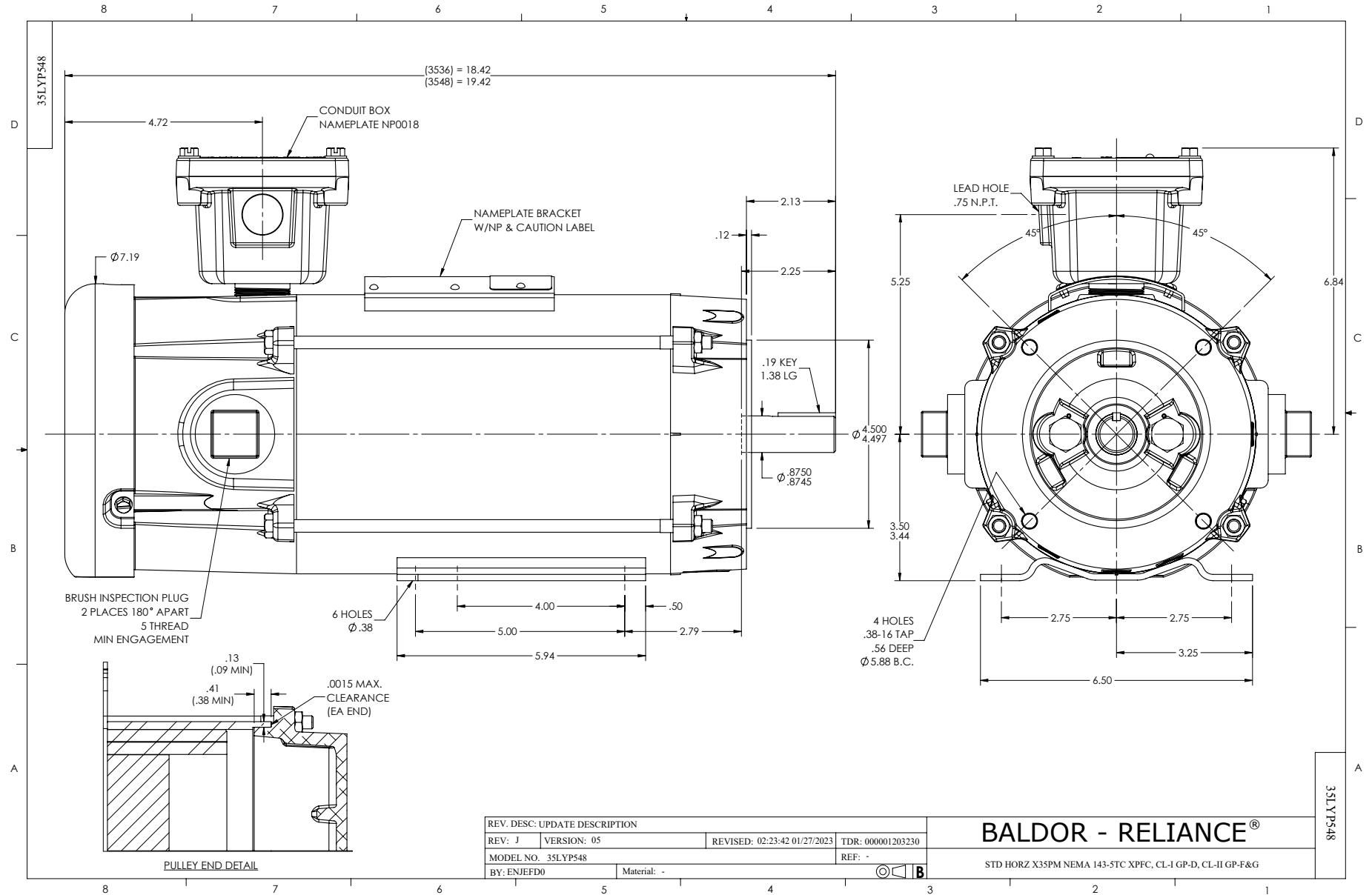
Typical performance - not guaranteed values.

1.5 HP DC 1750 RPM 180 V 3548P

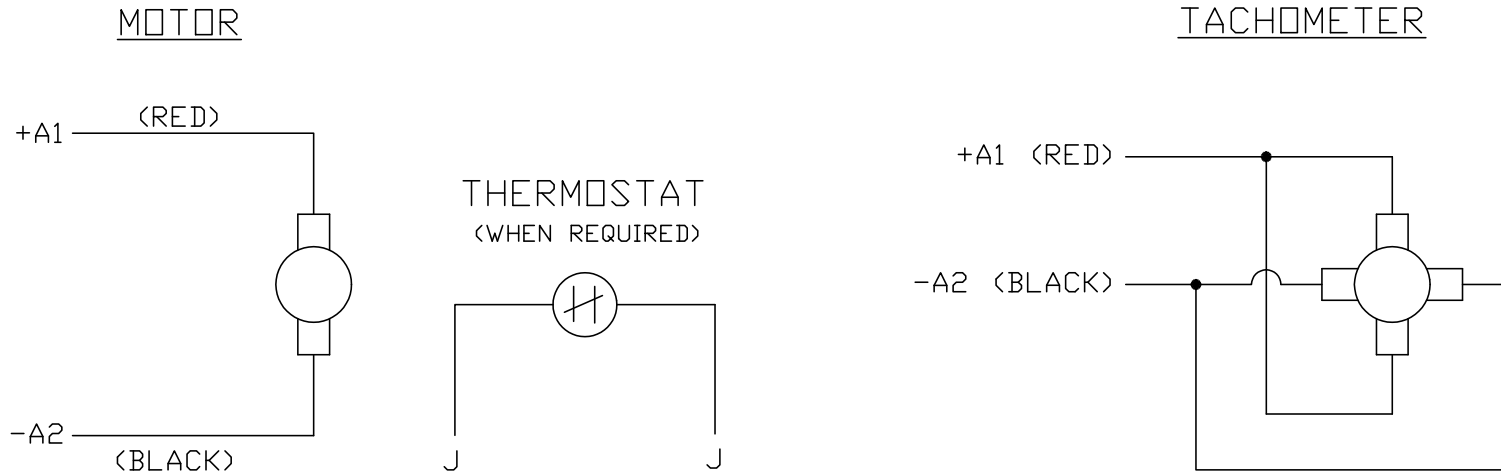
ENCL: XPFC DUTY: CONT CL: F



9/9/2024, DCPERF, VER 2.0.06, record 1413



CD0194



NOTES:

1. CCW ROTATION AS SHOWN FACING COMMUTATOR END. TO REVERSE MOTOR ROTATION OR TACHOMETER OUTPUT POLARITY INTERCHANGE LEADS A1(RED) & A2(BLACK)
2. LEAD COLORS FOR REFERENCE ONLY & NOT SPECIFIED BY THIS DRAWING. LEAD COLORS SPECIFIED BY LAYOUT DRAWING & BILL OF MATERIAL ONLY.

MATL: -			
REV: E	ADDED NOTE "LEAD COLORS FOR REFERENCE ONLY &..."		
CD0194	SCALE: -	BY: CK	REVISED: 07/28/95
	FILE: AAA00004503	TDR: 0078737	

BALDOR ELECTRIC Co.

CD TYPE P DC PERMANENT MAGNET MOTORS AND TACHOMETERS

CD0194