

BALDOR • RELIANCE

Customer information packet

CDPWD3306

.25HP, 1750RPM, DC, 56C, 3320P, TENV, F1

Specifications

Armature Voltage	180 V
Base Speed	1750 rpm
Enclosure	TENV
Frame	56C
Frame Material	Steel
Output Power	0.250 HP
Agency Approvals	CE CSA UR
Ambient Temperature	40 °C
Armature Current	1.3 a
Armature Inertia	4.680 lb-ft ²
Base Indicator	Rigid
Bearing Grease Type	Polyrex EM (-20F +300F)
Drip Cover	No Drip Cover
Duty Rating	CONT
Feedback Device	NO FEEDBACK
Heater Indicator	No Heater
Lifting Lugs	No Lifting Lugs
Motor Lead Exit	Ko Box
Motor Lead Quantity/Wire Size	2 @ 18 AWG
Motor Lead Termination	Flying Leads
Motor Standards	NEMA
Mounting Arrangement	F1
Overall Length	12.25 IN
Product Family	Wash Down
Pulley End Bearing Type	Sealed Bearing
Service Factor	1.00
Shaft Diameter	0.625 IN
Shaft Extension Location	Pulley End
Shaft Ground Indicator	No Shaft Grounding
Shaft Rotation	Reversible

Part detail

Revision	AH
Type	DC
Mech. spec.	33-2154
Base	
Status	PRD/A
Elec. spec.	33WGZ132
Layout	33LY2154
Eff. date	04-07-2022
CD Diagram	CD0194
Poles	00
Leads	
Proprietary	False
Created date	01-01-0001

Shaft Slinger Indicator

Shaft Slinger

Nameplate

NP1509					
CAT.NO.	CDPWD3306				
SPEC.	33-2154Z132				
HP	.25	ENCL	TENV		
RPM	1750 1/MIN IC410				
FRAME	56C	TYPE	3320P		
ARM V	180	ARM A	1.25		
FLD V	FLD A				
INSUL	F	AMB.	40		
DUTY	CONT	SUPPLY	1.3		
BRG/DE	6203	BRG/ODE	6203		
BRUSHES	2/BP5011CV01				
	IP55	BLANK			
SER.					
BLANK	KW.18 KG10				
APRV-CSA	Y	APRV-UL	Y	APRV-CE	Y

DC Motor Performance Data

Record # 2012

Typical performance - not guaranteed values

Winding: 33WGZ132-R006		Type: 3320P	Enclosure: TENV	
Nameplate Data		General Characteristics		
Rated Output (HP)	0.25	Armature Resistance @ 25°C	8.54 Ω	
R.P.M.	1750	Voltage Constant	98.01 v/krpm	
Armature Volts	180	Armature Inductance	60.59301 mH	
Armature Amps	1.25	Armature Inertia	4.68 LI ²	
Field Volts				
Field Amps				
Rating - Duty	40C AMB-CONT			
Form Factor	1.3			

Load Characteristics at 180 Armature Volts

Load Point	1	2	3	4	5	6	7
Armature Amps	0.1	0.35	0.61	0.87	1.15	1.43	1.68
R.P.M.	1830	1821	1779	1750	1720	1690	1673
Torque (LB-FT)	0	0.193	0.387	0.559	0.752	0.945	1.117

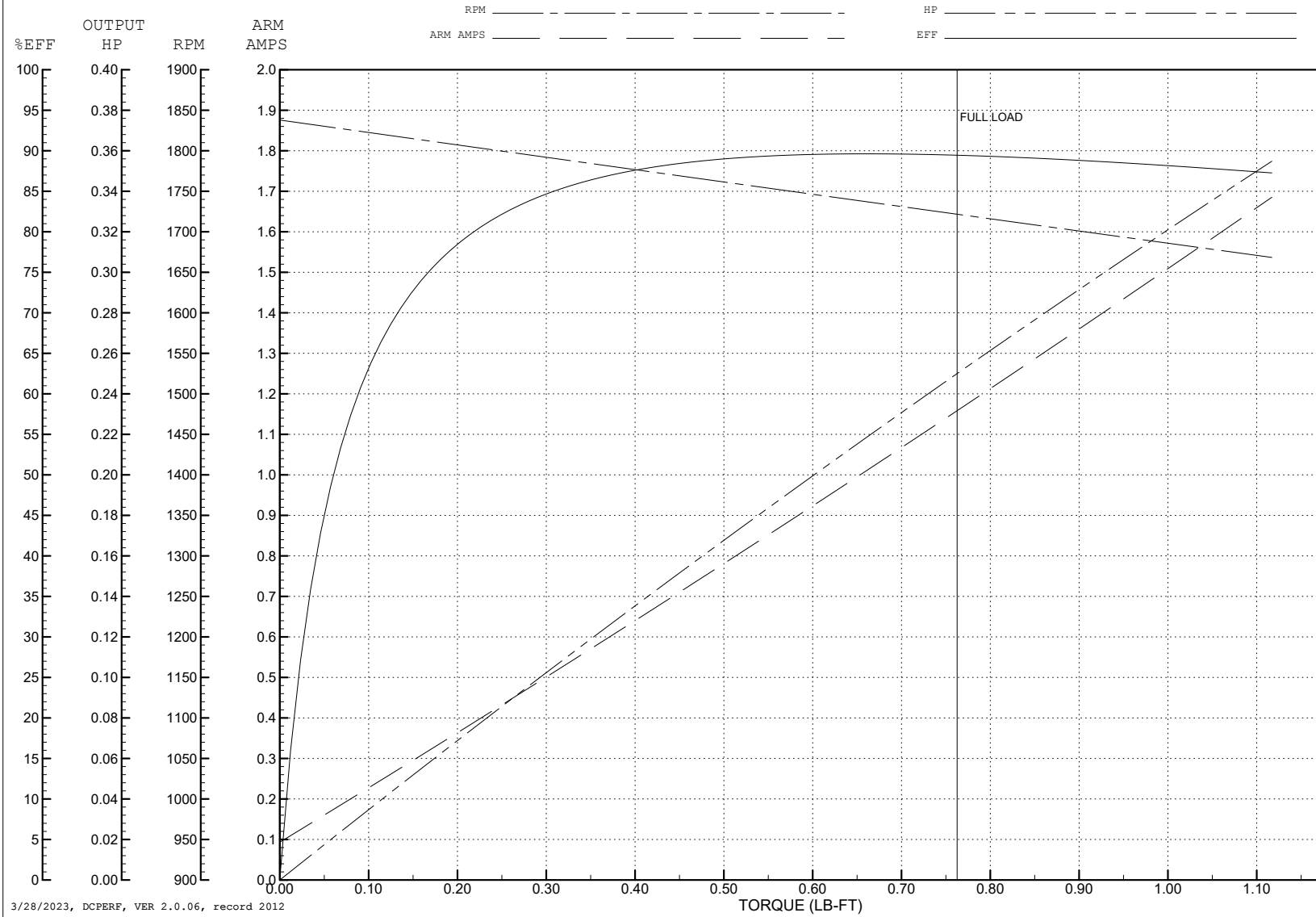
ABB Motors and Mechanical Inc.

WINDING # 33WGZ132

0.25 HP DC 1750 RPM 180 V 3320P

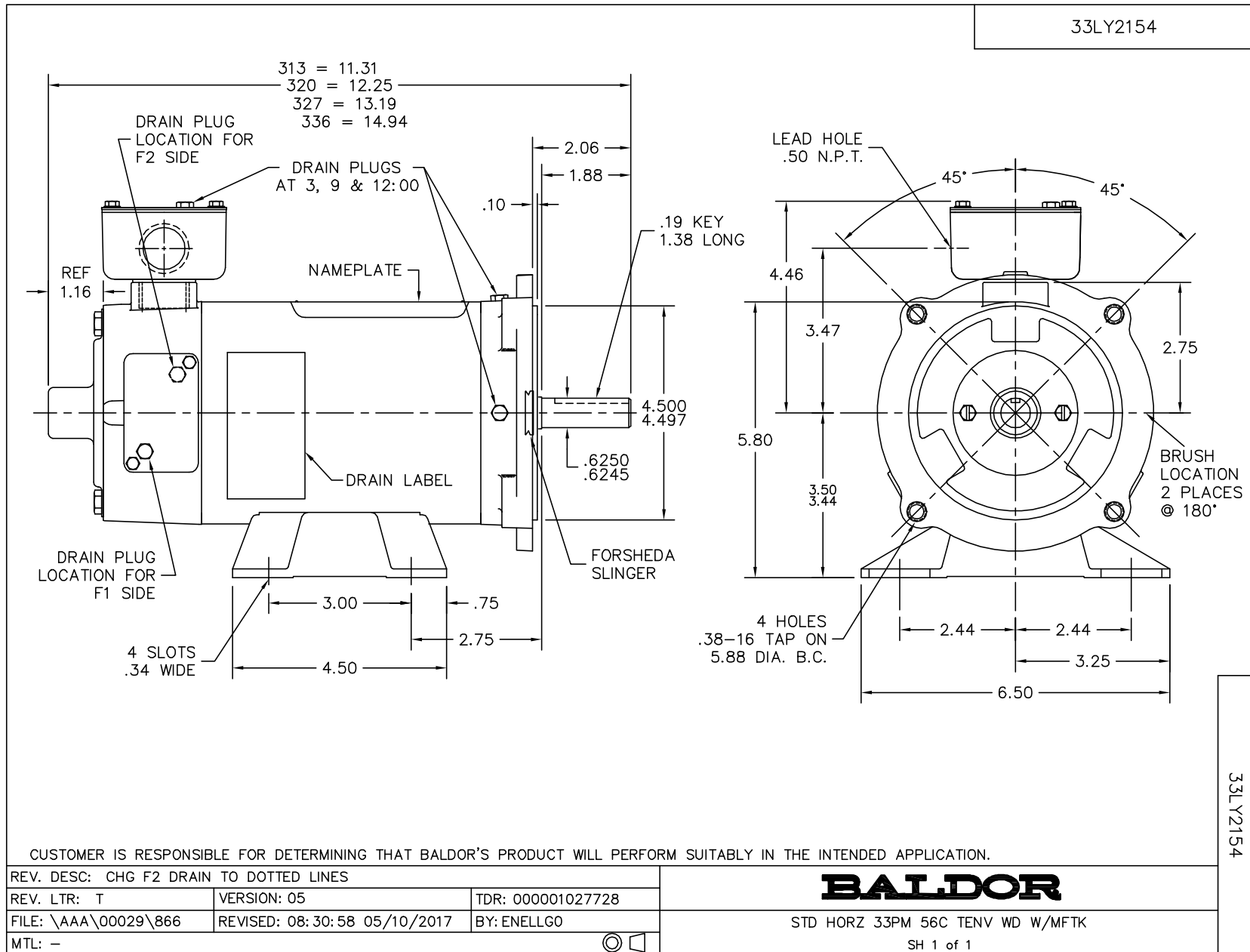
Typical performance - not guaranteed values.

ENCL: TENV DUTY: CONT CL: F



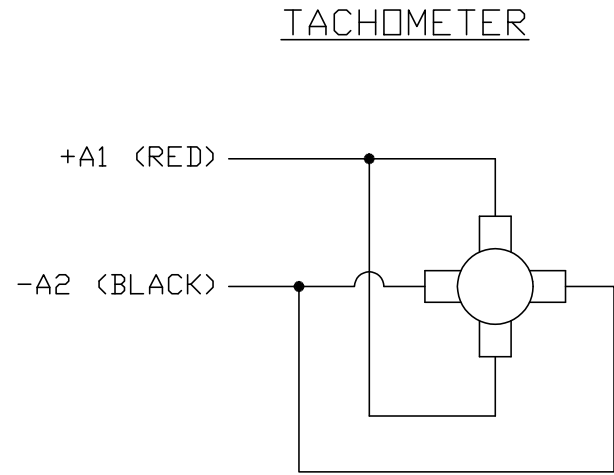
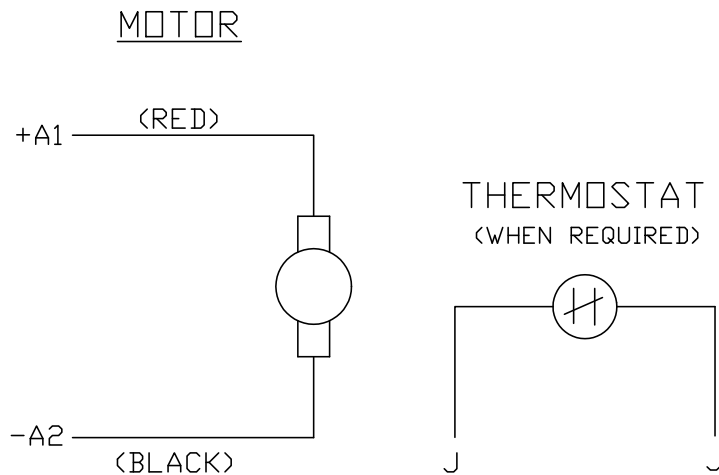
3/28/2023, DCPERF, VER 2.0.06, record 2012

33LY2154



33LY2154

CD0194



NOTES:

1. CCW ROTATION AS SHOWN FACING COMMUTATOR END. TO REVERSE MOTOR ROTATION OR TACHOMETER OUTPUT POLARITY INTERCHANGE LEADS A1(RED) & A2(BLACK)
2. LEAD COLORS FOR REFERENCE ONLY & NOT SPECIFIED BY THIS DRAWING. LEAD COLORS SPECIFIED BY LAYOUT DRAWING & BILL OF MATERIAL ONLY.

MATL: -			
REV: E	ADDED NOTE "LEAD COLORS FOR REFERENCE ONLY &..."		
761000	SCALE: -	BY: CK	REVISED: 07/28/95
	FILE: AAA00004503	TDR: 0078737	

BALDOR ELECTRIC Co.

CD TYPE P DC PERMANENT MAGNET MOTORS AND TACHOMETERS

CD0194