



Customer information packet

CDPT3605

5HP, 1750RPM, DC, 1810ATC, 3681P, TEFC, F1, N

Class - None

Division - Not Applicable

Specifications

Armature Voltage	180 V
Base Speed	1750 rpm
Enclosure	TEFC
Frame	1810ATC
Frame Material	Steel
Output Power	5.000 HP
XP Class and Group	None
Agency Approvals	CE CSA UR WEEE
Ambient Temperature	40 °C
Armature Current	24.5 a
Armature Inertia	177.060 lb-ft ²
Base Indicator	Rigid
Bearing Grease Type	Polyrex EM (-20F +300F)
Drip Cover	No Drip Cover
Duty Rating	CONT
Feedback Device	TACHOMETER
Heater Indicator	No Heater
Insulation Class	F
Lifting Lugs	Standard Lifting Lugs
Motor Lead Quantity/Wire Size	2 @ 12 AWG
Motor Lead Termination	Flying Leads
Motor Standards	NEMA
Mounting Arrangement	F1
Overall Length	30.07 IN
Product Family	General Purpose
Pulley End Bearing Type	Sealed Bearing
RoHS Status	ROHS COMPLIANT
Service Factor	1.00
Shaft Diameter	1.125 IN

Part detail

Revision	C
Type	DC
Mech. spec.	36P333
Base	
Status	PRD/A
Elec. spec.	36WGZ509
Layout	36LYP333
Eff. date	06-23-2023
CD Diagram	CD0194
Poles	00
Leads	
Proprietary	False
Created date	06-19-2019

Shaft Ground Indicator	No Shaft Grounding
Shaft Rotation	Reversible
Shaft Slinger Indicator	No Slinger
XP Division	Not Applicable

Nameplate

NP0891L					
CAT.NO.	CDPT3605				
SPEC.	36P333Z509				
HP	5	ENCL	TEFC		
RPM	1750				
FRAME	1810ATC	TYPE	3681P		
ARM V	180	ARM A	24.5		
FLD V		FLD A			
INSUL	F	AMB.	40		
DUTY	CONT	SUPPLY	K		
BRG/DE	6206	BRG/ODE	6206		
BRUSHES	2/BP5027A01				
		BLANK			
SER.					
BLANK					
APRV-CE	Y	APRV-CSA	Y	APRV-UL	Y

DC Motor Performance Data

Record # 312

Typical performance - not guaranteed values

Winding: 36WGZ509-R001		Type: 3681P		Enclosure: TEFC	
Nameplate Data			General Characteristics		
Rated Output (HP)	5	Armature Resistance @ 25°C	0.16 Ω		
R.P.M.	1750	Voltage Constant	91.78 v/krpm		
Armature Volts	180	Armature Inductance	3.677 mH		
Armature Amps	24.5	Armature Inertia	177.0597 LI ²		
Field Volts					
Field Amps					
Rating - Duty	40C AMB-CONT				
Power Supply Code	K				

Load Characteristics at 180 Armature Volts

Load Point	1	2	3	4	5	6	7
Armature Amps	1.1	7.1	12.8	18.4	24.1	29.9	35.99
R.P.M.	1931	1915	1886	1870	1850	1832	1815
Torque (LB-FT)	0	3.8	7.57	11.39	15.18	19	22.81

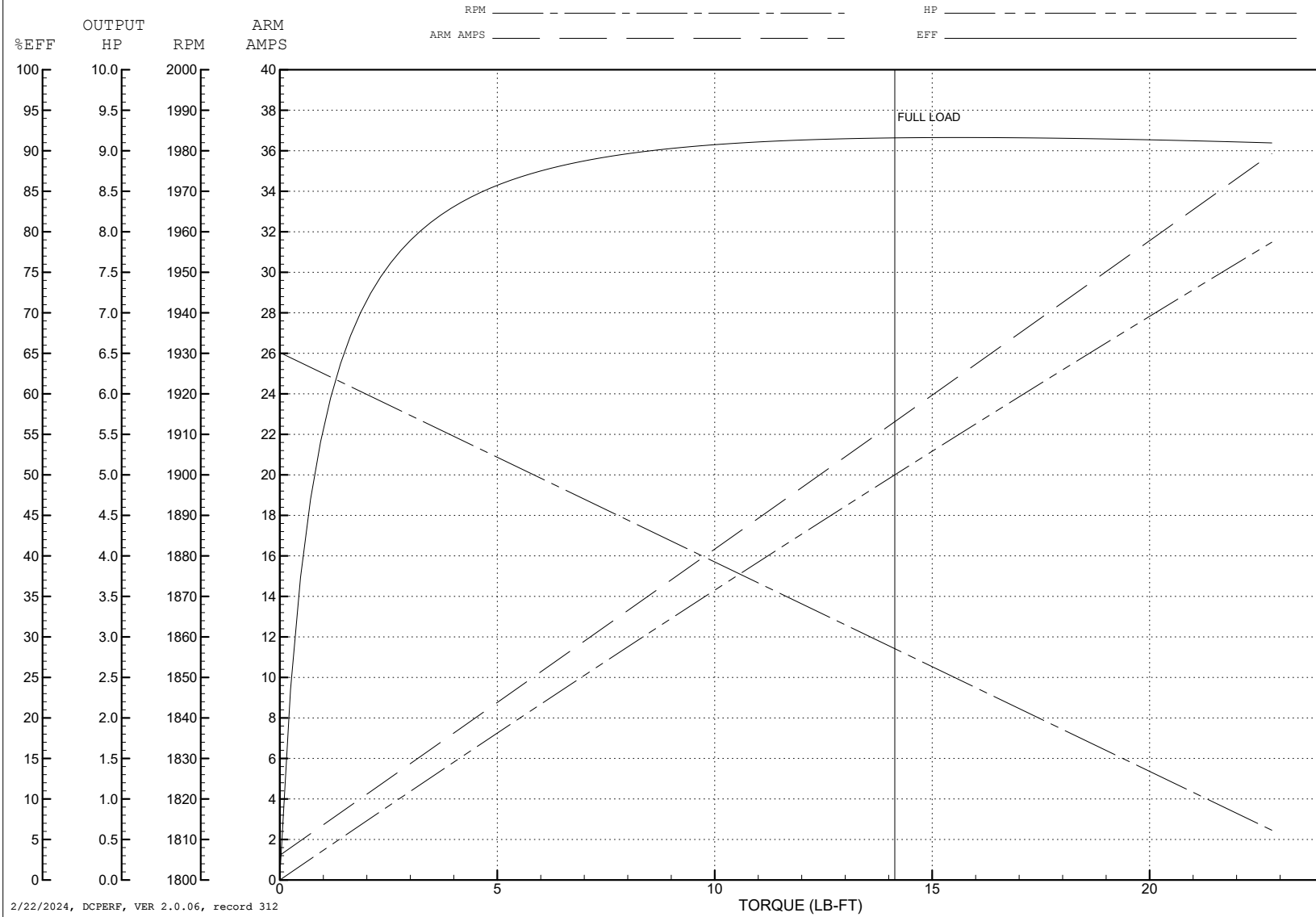
ABB Motors and Mechanical Inc.

WINDING # 36WGZ509

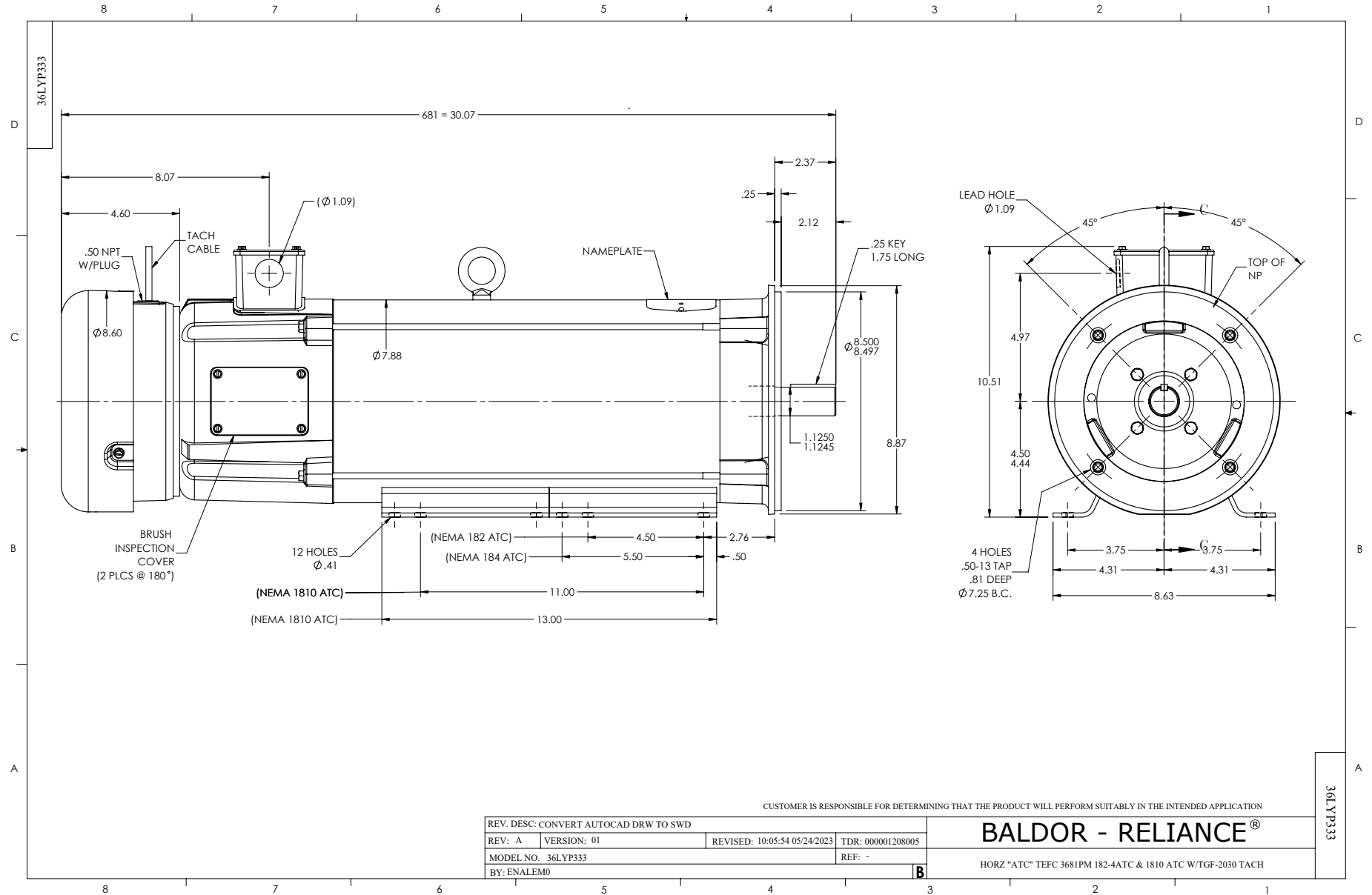
Typical performance - not guaranteed values.

5 HP DC 1750 RPM 180 V 3681P

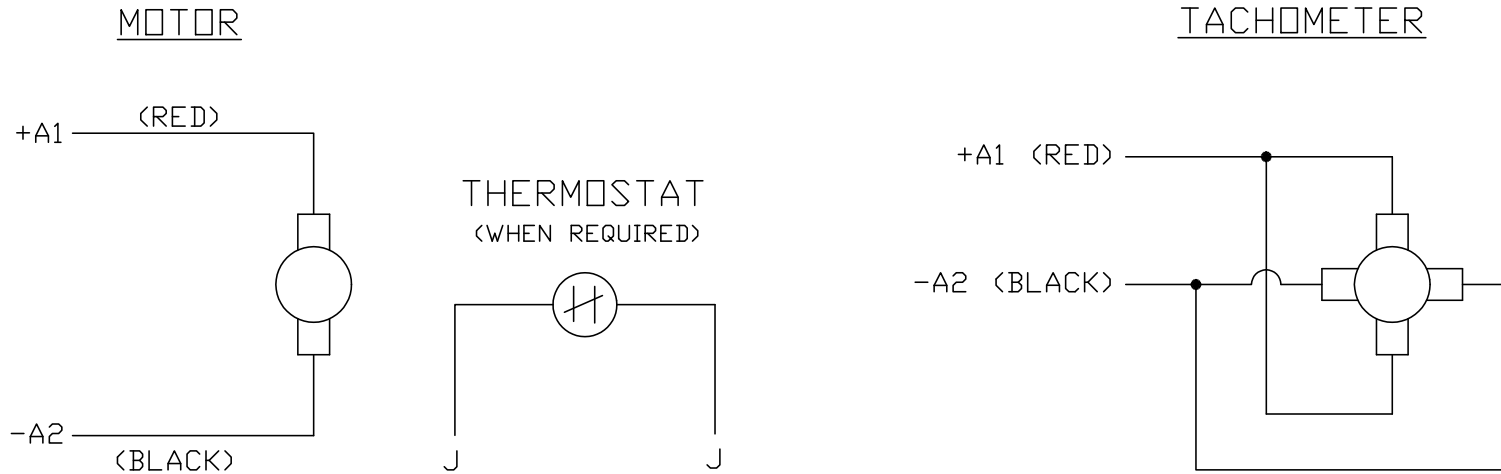
ENCL: TEFC DUTY: CONT CL: F



2/22/2024, DCPERF, VER 2.0.06, record 312



CD0194



NOTES:

1. CCW ROTATION AS SHOWN FACING COMMUTATOR END. TO REVERSE MOTOR ROTATION OR TACHOMETER OUTPUT POLARITY INTERCHANGE LEADS A1<RED> & A2<BLACK>
2. LEAD COLORS FOR REFERENCE ONLY & NOT SPECIFIED BY THIS DRAWING. LEAD COLORS SPECIFIED BY LAYOUT DRAWING & BILL OF MATERIAL ONLY.

MATL: -			
REV: E	ADDED NOTE "LEAD COLORS FOR REFERENCE ONLY &..."		
CD0194	SCALE: -	BY: CK	REVISED: 07/28/95
	FILE: AAA00004503	TDR: 0078737	

BALDOR ELECTRIC Co.

CD TYPE P DC PERMANENT MAGNET MOTORS AND TACHOMETERS

CD0194