

BALDOR® • RELIANCE™

Customer information packet

CD6218

1HP, 1750RPM, DC, 184C, 3623D, TEFC, F1

Class - None

Division -

Copyright © All product information within this document is subject to ABB Motors and Mechanical Inc. copyright © protection, unless otherwise noted.

10/5/2024 1:00:39 AM

Specifications

Armature Voltage	180 V
Base Speed	1750 rpm
Enclosure	TEFC
Field Voltage	100 V
	200 V
Frame	184C
Frame Material	Steel
Haz Area Class and Group	None
Output Power	1.000 HP
Agency Approvals	CSA
	UR
Ambient Temperature	40 °C
Armature Current	5.0 a
Armature Inertia	19.385 lb-ft ²
Base Indicator	Rigid
Bearing Grease Type	Polyrex EM (-20F +300F)
Drip Cover	No Drip Cover
Duty Rating	CONT
Feedback Device	NO FEEDBACK
Field Winding Type	SHUNT
Heater Indicator	No Heater
Lifting Lugs	Standard Lifting Lugs
Motor Lead Exit	Ko Box
Motor Lead Quantity/Wire Size	4 @ 18 AWG
	2 @ 12 AWG
Motor Lead Termination	Flying Leads
Motor Standards	NEMA
Mounting Arrangement	F1
Overall Length	15.63 IN
Product Family	General Purpose
Pulley End Bearing Type	Sealed Bearing
RoHS Status	ROHS COMPLIANT

Part detail

Revision	Y
Type	DC
Mech. spec.	36-5257
Base	
Status	PRD/A
Elec. spec.	36WGZ110
Layout	36LY5257
Eff. date	06-23-2023
CD Diagram	CD0860C01
Poles	00
Leads	
Proprietary	False
Created date	01-01-0001

Service Factor	1.00
Shaft Diameter	0.875 IN
Shaft Extension Location	Pulley End
Shaft Ground Indicator	No Shaft Grounding
Shaft Rotation	Reversible
Shaft Slinger Indicator	No Slinger

Nameplate

NP0111L			
CAT.NO.	CD6218		
SPEC.	36-5257Z110		
HP	1	ENCL	TEFC
RPM	1750		
FRAME	184C	TYPE	3623D
ARM V	180	ARM A	5
FLD V	200/100	FLD A	.25/.5
INSUL	F	AMB.	40
DUTY	CONT	SUPPLY	----
BRG/DE	6206	BRG/ODE	6205
BRUSHES	2/BP5125A01		
	BLANK		
SER.			
BLANK			
APRV-CSA	APRV-UL		

Accessories

Part number	Description	Multiplier
TK3600	TEFC TACH MTG.CONVERSION KIT	

DC Motor Performance Data

Record # 1407

Typical performance - not guaranteed values

Winding: 36WGZ110-R001		Type: 3623D	Enclosure: TEFC
Nameplate Data		General Characteristics	
Rated Output (HP)	1	Armature Resistance @ 25°C	1.7818 Ω
R.P.M.	1750	Commutating Winding Resistance @ 25°C	0.9431 Ω
Armature Volts	180		
Armature Amps	5	Shunt Winding Resistance @ 25°C	364.759 Ω
Field Volts	200 / 100		
Field Amps	0.25 / 0.5		
Rating - Duty	40C AMB-CONT		
Power Supply Code	K		

Load Characteristics at 180 Armature Volts, 200 Field Volts, 0.27 Field Amps

Load Point	1	2	3	4	5	6	7
Armature Amps	0.3	2.2	3.3	4.4	5.5	6.7	9.7
R.P.M.	1708	1656	1625	1600	1590	1580	1594
Torque (LB-FT)	0	1.5	2.25	3	3.75	4.5	6

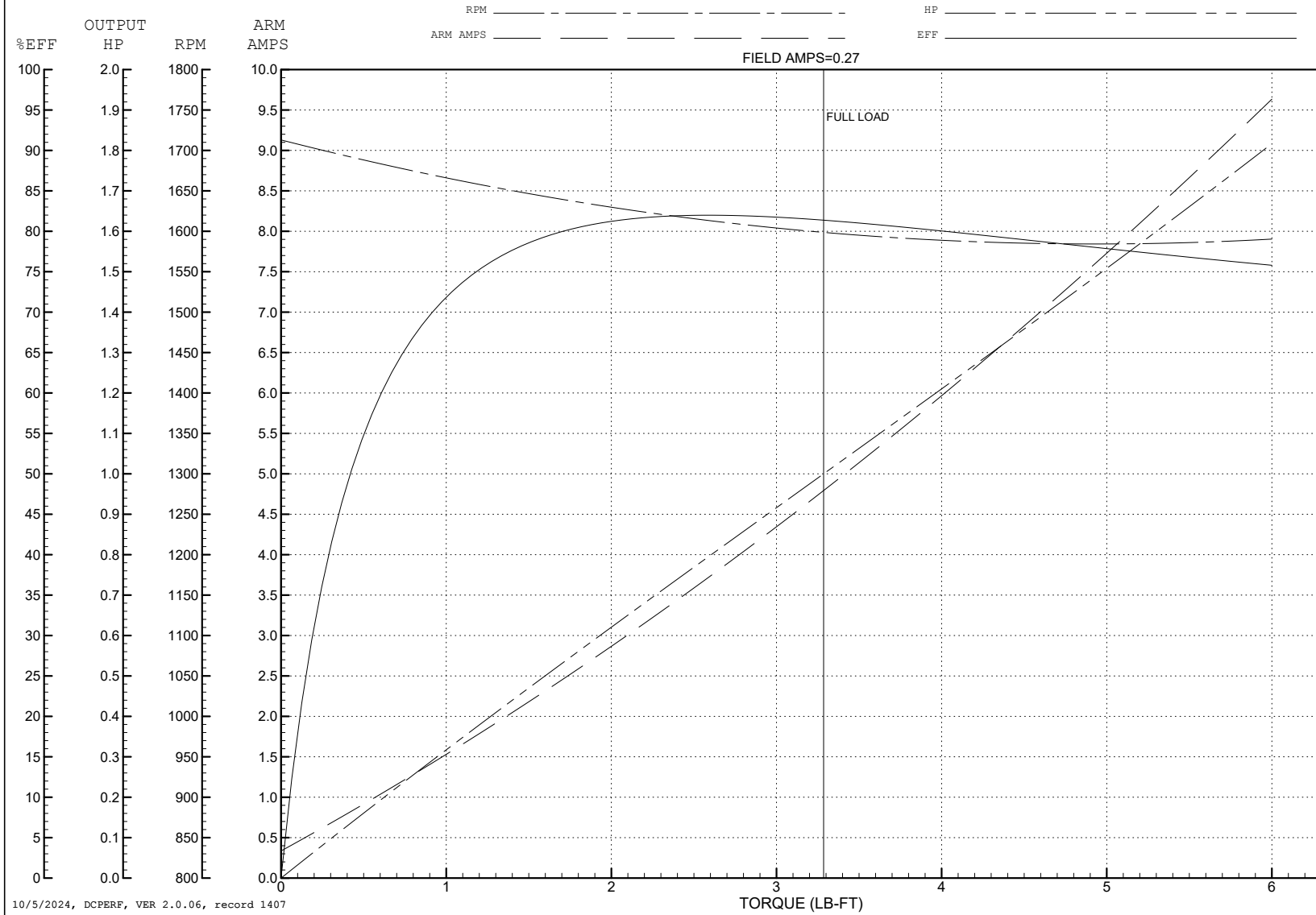
ABB Motors and Mechanical Inc.

WINDING # 36WGZ110

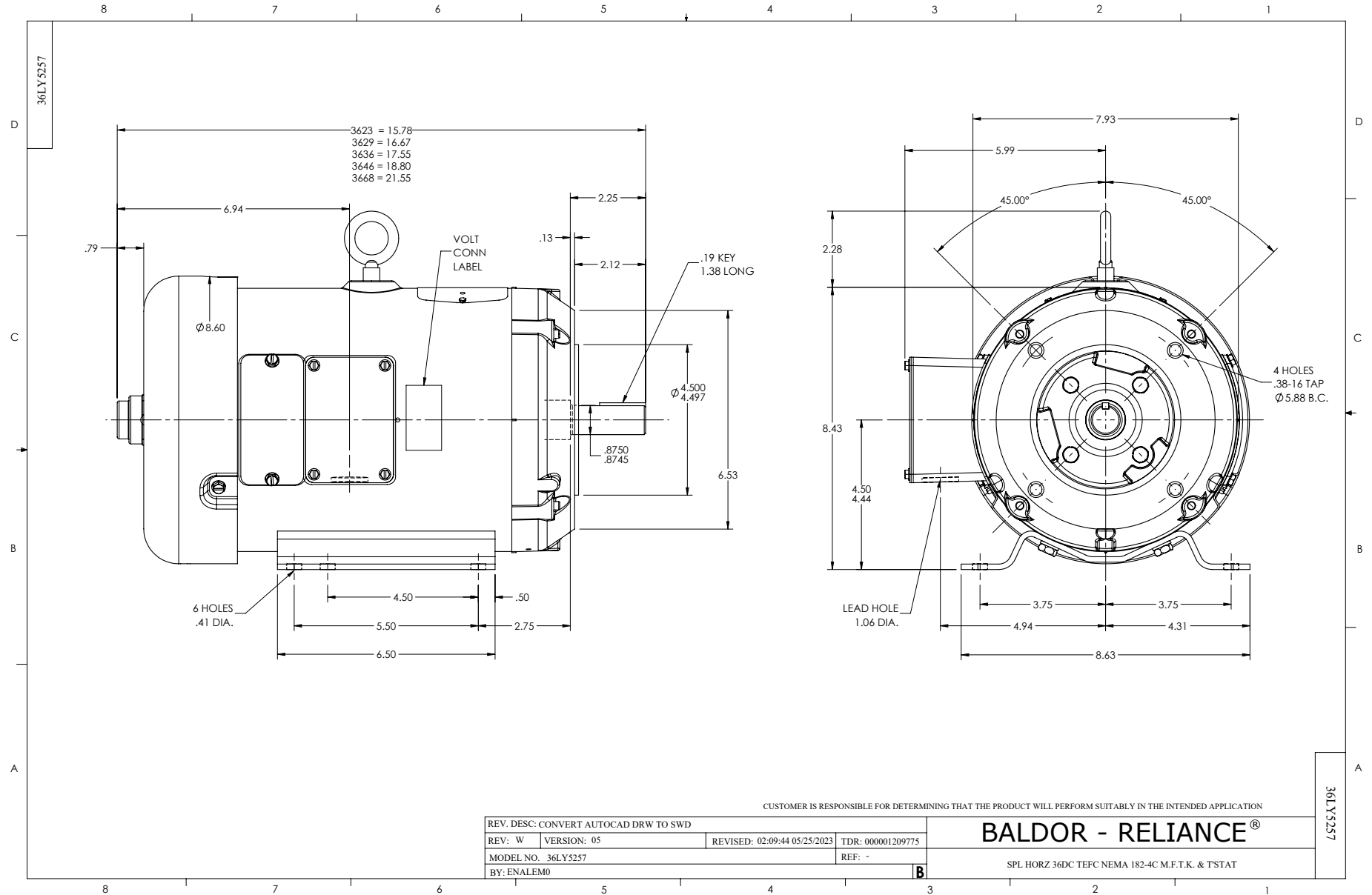
Typical performance - not guaranteed values.

1 HP DC 1750 RPM 180 V ARM 200/100 V FLD 3623D

ENCL: TEFC DUTY: CONT CL: F

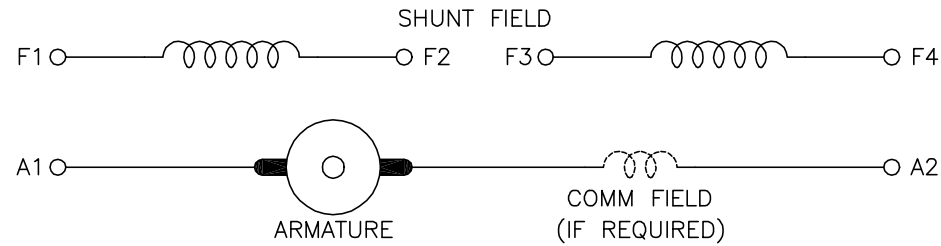


10/5/2024, DCPERF, VER 2.0.06, record 1407



CD0860C01

SHUNT WOUND



CONNECTION	DIRECTION OF ROTATION			
	CWDE		CCWDE	
	POS TERM (+)	NEG TERM (-)	POS TERM (+)	NEG TERM (-)
HIGH VOLTAGE	A1 F1 CONNECT F2 & F3	A2 F4	A2 F1 CONNECT F2 & F3	A1 F4
LOW VOLTAGE	A1 F1 & F3	A2 F2 & F4	A2 F1 & F3	A1 F2 & F4

NOTES:

1. LIMIT STARTING INRUSH CURRENT TO NOT MORE THAN 3 TIMES RATED AMPERES BY ENERGIZING THE FULL SHUNT FIELD BEFORE BRINGING THE ARMATURE VOLTAGE UP SLOWLY OR IN STEPS.
2. OPTIONAL FIELD REOSTAT MAY BE CONNECTED IN SERIES WITH THE SHUNT FIELD.
3. OPTIONAL THERMOSTAT LEADS ARE MARKED J,J.

REV. DESC: NEW, REPLACE CD0860			
REV. LTR: -	BY: JLP	REVISED: 15:35:22 11/03/2004	TDR: 347796
10C0980C0		FILE: AAA00121477	REF: CD0860C01
		MTL: -	

BALDOR ELECTRIC Co.

DC CONNECTION DIAGRAM, SHUNT FIELD, 6 LEAD, DUAL VOLTAGE

CD0860C01