

BALDOR® • RELIANCE™

Customer information packet

CD5375

.75HP, 1750RPM, DC, 56C, 3528D, TEFC, F1

Class - None

Division -

Specifications

Armature Voltage	90 V
Base Speed	1750 rpm
Enclosure	TEFC
Field Voltage	100 V
	50 V
Frame	56C
Frame Material	Steel
Output Power	0.750 HP
XP Class and Group	None
Agency Approvals	CSA UR
Ambient Temperature	40 °C
Armature Current	8.0 a
Armature Inertia	10.926 lb-ft ²
Base Indicator	Rigid
Bearing Grease Type	Polyrex EM (-20F +300F)
Drip Cover	No Drip Cover
Duty Rating	CONT
Feedback Device	NO FEEDBACK
Field Winding Type	SHUNT
Heater Indicator	No Heater
Lifting Lugs	No Lifting Lugs
Motor Lead Exit	Lead Hole
Motor Lead Quantity/Wire Size	4 @ 18 AWG 2 @ 14 AWG
Motor Lead Termination	Flying Leads
Motor Standards	NEMA
Mounting Arrangement	F1
Overall Length	16.29 IN
Product Family	General Purpose
Pulley End Bearing Type	Sealed Bearing
RoHS Status	ROHS COMPLIANT

Part detail

Revision	M
Type	DC
Mech. spec.	35P442
Base	
Status	PRD/A
Elec. spec.	35WGZ389
Layout	35LYP442
Eff. date	06-15-2018
CD Diagram	CD0860C01
Poles	00
Leads	
Proprietary	False
Created date	01-01-0001

Service Factor	1.00
Shaft Diameter	0.625 IN
Shaft Extension Location	Pulley End
Shaft Ground Indicator	No Shaft Grounding
Shaft Rotation	Reversible
Shaft Slinger Indicator	No Slinger

Nameplate

NP0111L			
CAT.NO.	CD5375		
SPEC.	35P442Z389		
HP	.75	ENCL	TEFC
RPM	1750		
FRAME	56C	TYPE	3528D
ARM V	90	ARM A	8
FLD V	100/50	FLD A	.6/1.2
INSUL	F	AMB.	40
DUTY	CONT	SUPPLY	1.3
BRG/DE	6205	BRG/ODE	6203
BRUSHES	2/BP5000T07		
	BLANK		
SER.			
BLANK			
APRV-CSA		APRV-UL	

Accessories

Part number	Description	Multiplier
TK3500	TACHO MOUNTING KIT TK3500	A8

DC Motor Performance Data

Record # 509

Typical performance - not guaranteed values

Winding: 35WGZ389-R001		Type: 3528D	Enclosure: TEFC
Nameplate Data		General Characteristics	
Rated Output (HP)	0.75	Armature Resistance @ 25°C	0.5643 Ω
R.P.M.	1750	Commutating Winding Resistance @ 25°C	0.174 Ω
Armature Volts	90		
Armature Amps	8	Shunt Winding Resistance @ 25°C	77.715 Ω
Field Volts	100 / 50		
Field Amps	0.6 / 1.2		
Rating - Duty	40C AMB-CONT		
Form Factor	1.3		

Load Characteristics at 90 Armature Volts, 100 Field Volts, 0.63 Field Amps

Load Point	1	2	3	4	5	6	7
Armature Amps	0.9	4.2	6	8.3	10.6	12.4	15.4
R.P.M.	1957	1935	1911	1890	1869	1856	1843
Torque (LB-FT)	0	1.125	1.625	2.25	2.875	3.375	4

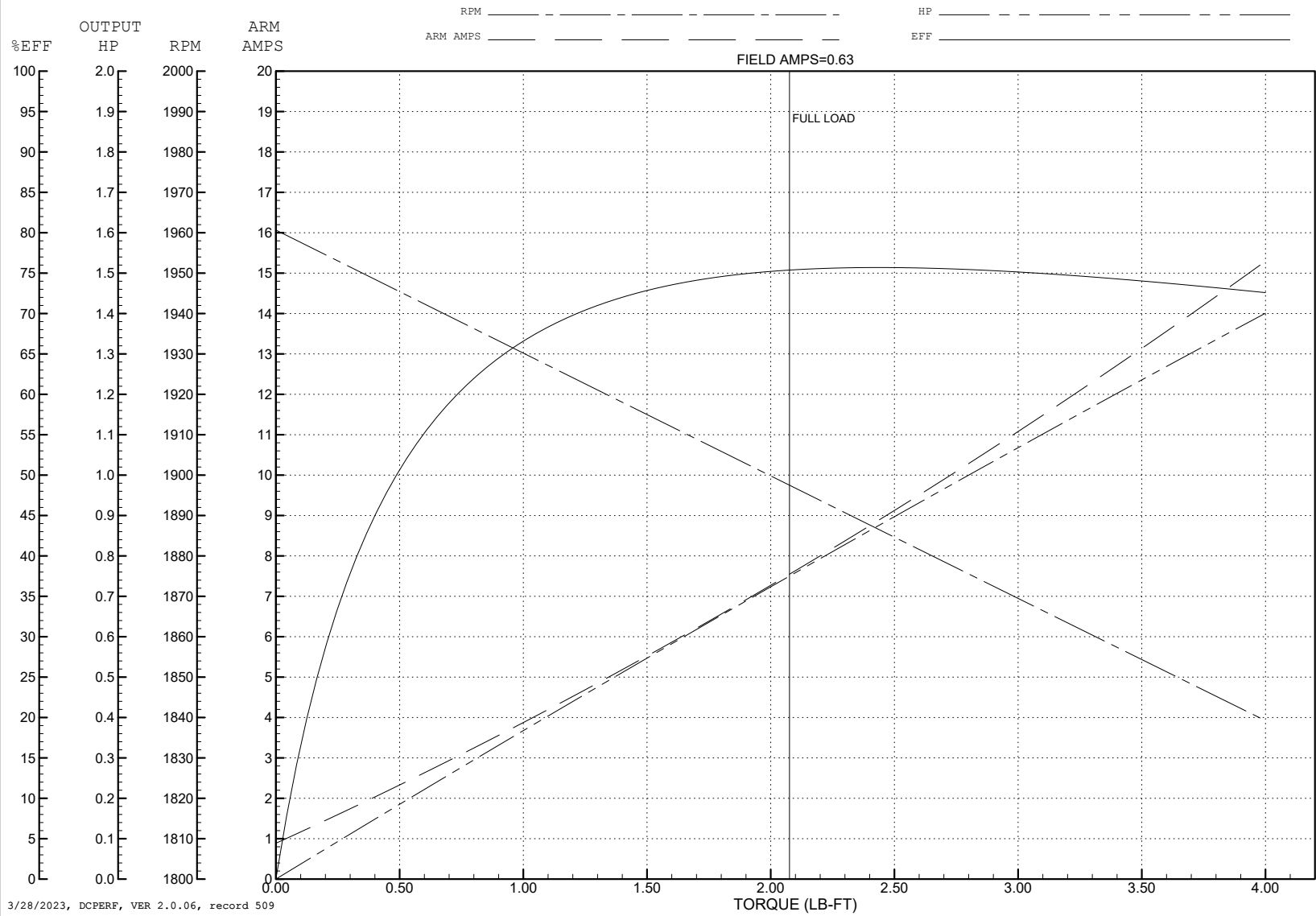
ABB Motors and Mechanical Inc.

WINDING # 35WGZ389

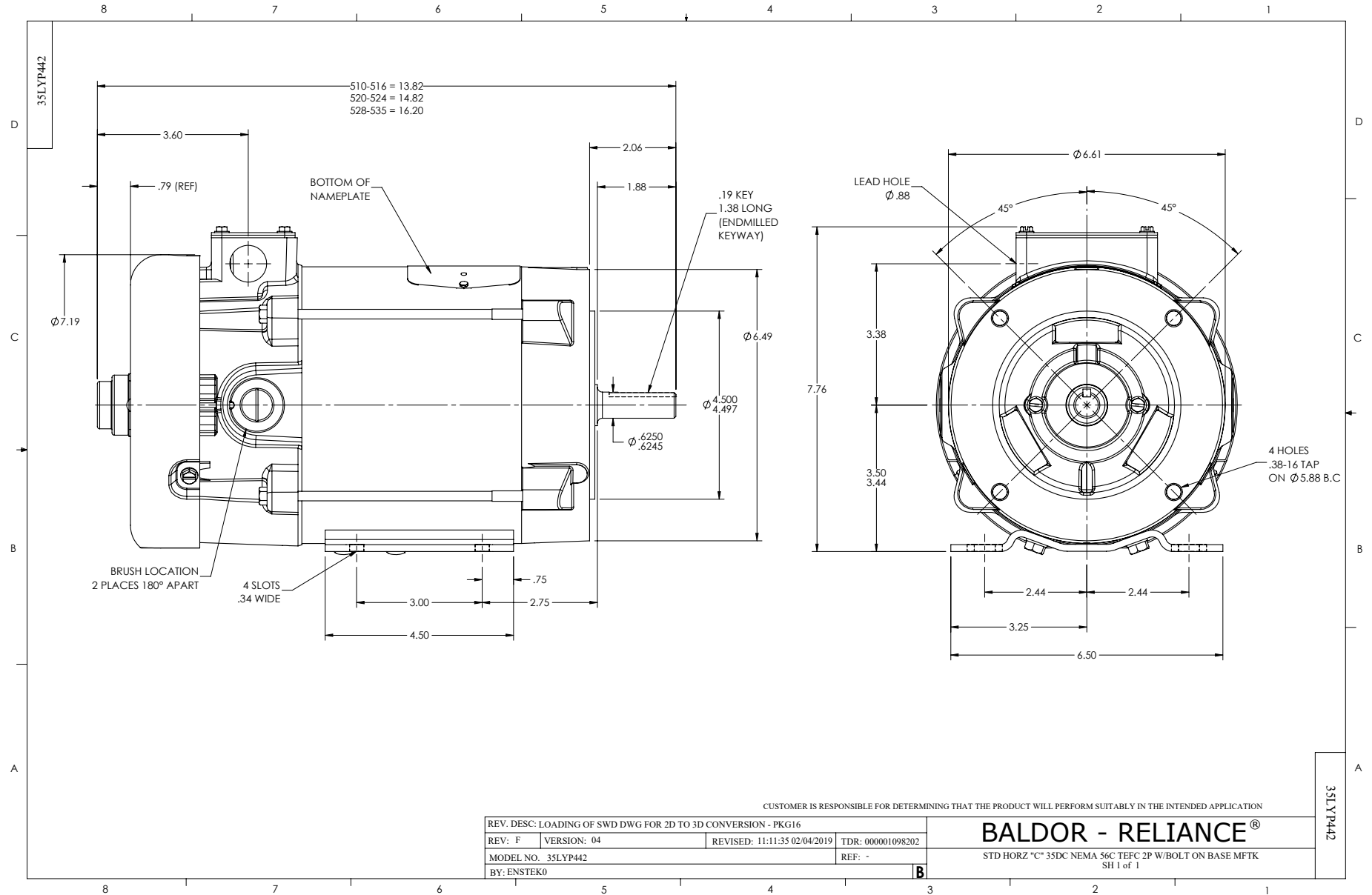
Typical performance - not guaranteed values.

0.75 HP DC 1750 RPM 90 V ARM 100/50 V FLD 3528D

ENCL: TEFC DUTY: CONT CL: F

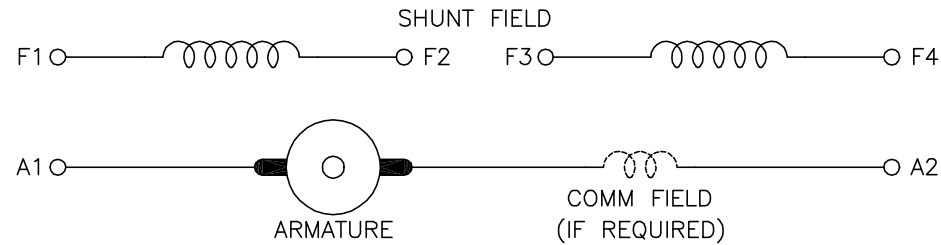


3/28/2023, DCPERF, VER 2.0.06, record 509



CD0860C01

SHUNT WOUND



CONNECTION	DIRECTION OF ROTATION			
	CWDE		CCWDE	
	POS TERM (+)	NEG TERM (-)	POS TERM (+)	NEG TERM (-)
HIGH VOLTAGE	A1 F1 CONNECT F2 & F3	A2 F4	A2 F1 CONNECT F2 & F3	A1 F4
LOW VOLTAGE	A1 F1 & F3	A2 F2 & F4	A2 F1 & F3	A1 F2 & F4

NOTES:

1. LIMIT STARTING INRUSH CURRENT TO NOT MORE THAN 3 TIMES RATED AMPERES BY ENERGIZING THE FULL SHUNT FIELD BEFORE BRINGING THE ARMATURE VOLTAGE UP SLOWLY OR IN STEPS.
2. OPTIONAL FIELD REOSTAT MAY BE CONNECTED IN SERIES WITH THE SHUNT FIELD.
3. OPTIONAL THERMOSTAT LEADS ARE MARKED J,J.

REV. DESC: NEW, REPLACE CD0860			
REV. LTR: -	BY: JLP	REVISED: 15:35:22 11/03/2004	TDR: 347796
100098000		FILE: AAA00121477	REF: CD0860C01
		MTL: -	

BALDOR ELECTRIC Co.

DC CONNECTION DIAGRAM, SHUNT FIELD, 6 LEAD, DUAL VOLTAGE

CD0860C01