

ABB BALDOR RELIANCE III

Customer information packet

CCPX322566T

60M 6P XPFC HOR 324TCY TSTAT CP FEAT INV

Class - CLI GP C,D; CLII GP E,F,G

Division - Division I

Specifications

Enclosure	XPFC
Frame	324TCY
Frame Material	Iron
Frequency	50.00 Hz 60.00 Hz
Haz Area Class and Group	CLI GP C,D; CLII GP E,F,G
Haz Area Division	Division I
Motor Letter Type	Three Phase
Output @ Frequency	20.000 HP @ 50 HZ 25.000 HP @ 60 HZ
Phase	3
Synchronous Speed @ Frequency	1200 RPM @ 60 HZ
Voltage @ Frequency	230.0 V @ 60 HZ 190.0 V @ 50 HZ 460.0 V @ 60 HZ 380.0 V @ 50 HZ
Agency Approvals	CSA EEV UL
Ambient Temperature	40 °C
Auxiliary Box	NO AUXILLARY BOX
Auxiliary Box Lead Termination	None
Base Indicator	Rigid
Bearing Grease Type	Polyrex EM (-20F +300F)
Blower	None
Constant Torque Speed Range	6
Current @ Voltage	69.000 A @ 208.0 V 63.000 A @ 230.0 V 62.000 A @ 190.0 V 32.000 A @ 460.0 V 31.000 A @ 380.0 V
Design Code	A
Drip Cover	No Drip Cover

Part Detail

Revision	G
Type	AC
Mech. spec.	12J224
Base	
Status	PRD/A
Elec. spec.	12WGY116
Layout	12LYJ224
Eff. date	12-04-2024
CD Diagram	CD0180
Poles	06
Leads	9#8
Proprietary	False
Created date	04-18-2019

Duty Rating	CONT
Efficiency @ 100% Load	93.0 %
Electrically Isolated Bearing	Not Electrically Isolated
Enclosure Modification	Severe Duty Features
Feedback Device	NO FEEDBACK
Front Shaft Indicator	None
Haz Area Temp Code	T3C
Heater Indicator	No Heater
High Voltage Full Load Amps	31.0 a
Insulation Class	F
Inverter Code	Inverter Duty
IP Rating	IP55
KVA Code	H
Lifting Lugs	Standard Lifting Lugs
Locked Bearing Indicator	Locked Bearing
Max Speed	1800 rpm
Motor Lead Quantity/Wire Size	9 @ 8 AWG
Motor Lead Termination	Flying Leads
Motor Standards	NEMA
Motor Type	X1260M
Mounting Arrangement	F1
Number of Poles	6
Overall Length	32.00 IN
Power Factor	79
Product Family	Hazardous Location Motor
Pulley End Bearing Type	Ball
Pulley Face Code	C-Face
Pulley Shaft Indicator	Standard
Rodent Screen	None
RoHS Status	ROHS NON-COMPLIANT
Service Factor	1.00
Shaft Diameter	2.125 IN
Shaft Ground Indicator	No Shaft Grounding
Shaft Rotation	Reversible

Shaft Slinger Indicator	Shaft Slinger
Speed	1180 rpm 985 rpm
Speed Code	Single Speed
Starting Method	Direct on line
Thermal Device - Bearing	None
Thermal Device - Winding	Normally Closed Thermostat
Vibration Sensor Indicator	No Vibration Sensor
Winding Thermal 1	None
Winding Thermal 2	None

Nameplate

NP2033XPSLEV

NO.		CC	010A				
S/N		TEMP CODE	T3C				
SPEC.	12J224Y116G1	INV.TYPE	PWM				
CAT.NO.	CCPX322566T	C HP FR	60	C HP TO	90		
HP	25//20	CT HZ FROM	6	CT HZ TO	60		
VOLTS	230/460//190/380	VT HZ FROM	6	VT HZ TO	60		
AMPS	63/32//62/31	MAG CUR	28/14				
RPM	1180//985	MX RPM	1800				
HZ	60//50	PH	3	CL	F	NOM.EFF.	93
SER.F.	1.00	DES	A	SL HZ	1	WK2	11.5
FRAME	324TCY	RATING	40C AMB-CONT				
BLANK	55C AMB @ 1.0 SF, 60C RISE						
	1.15SF ON SINEWAVE		NEMA MG-1 PT.5,IP55				

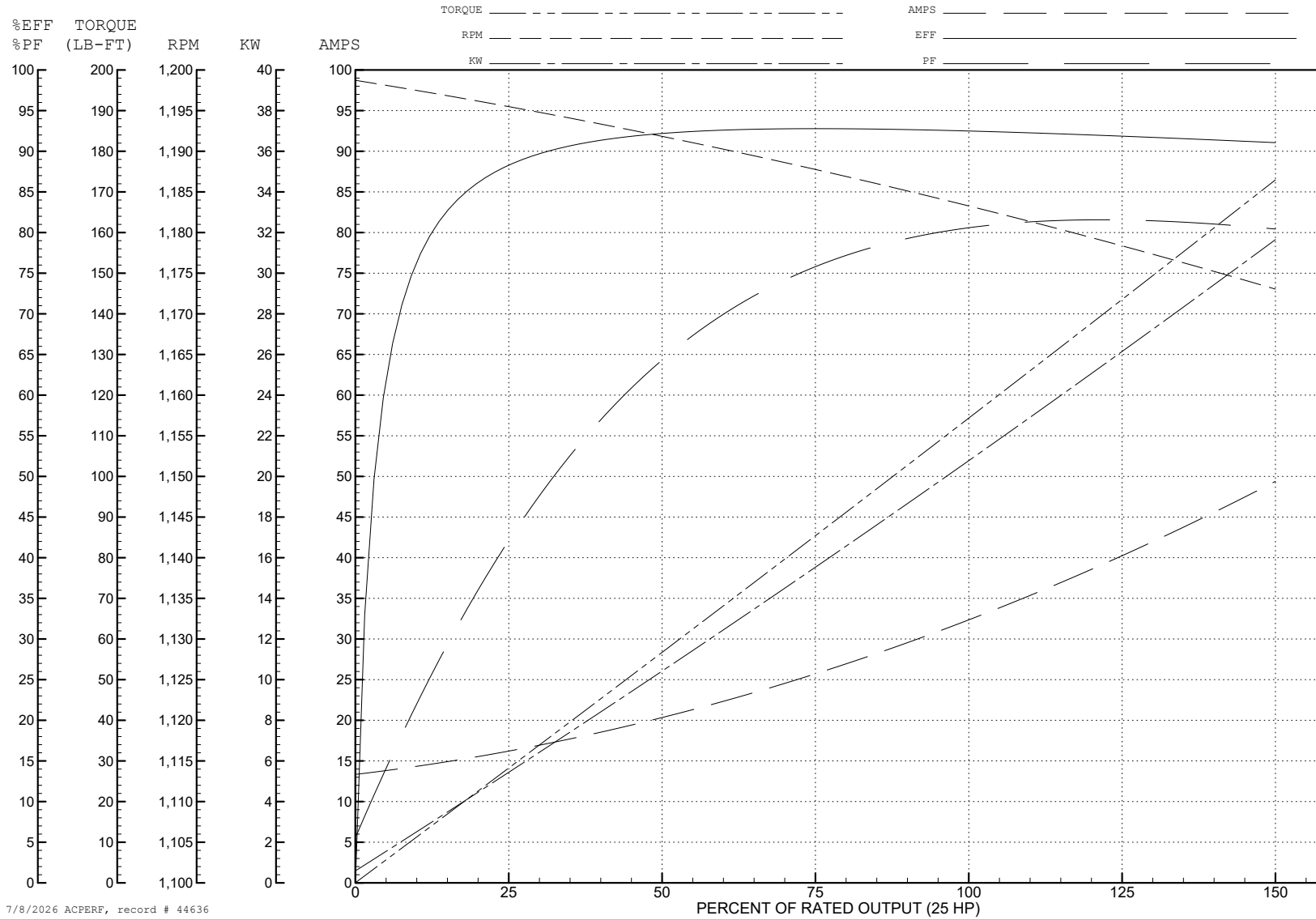
ABB Motors and Mechanical Inc.

WINDING # 12WGY116

Typical performance - not guaranteed values.

25 HP 3 PH 60 HZ 1180 RPM 460 V 1260M

TORQUES (LB-FT): PO=308 PU=117 LR=171 LRA=198



7/8/2026 ACPERF, record # 44636

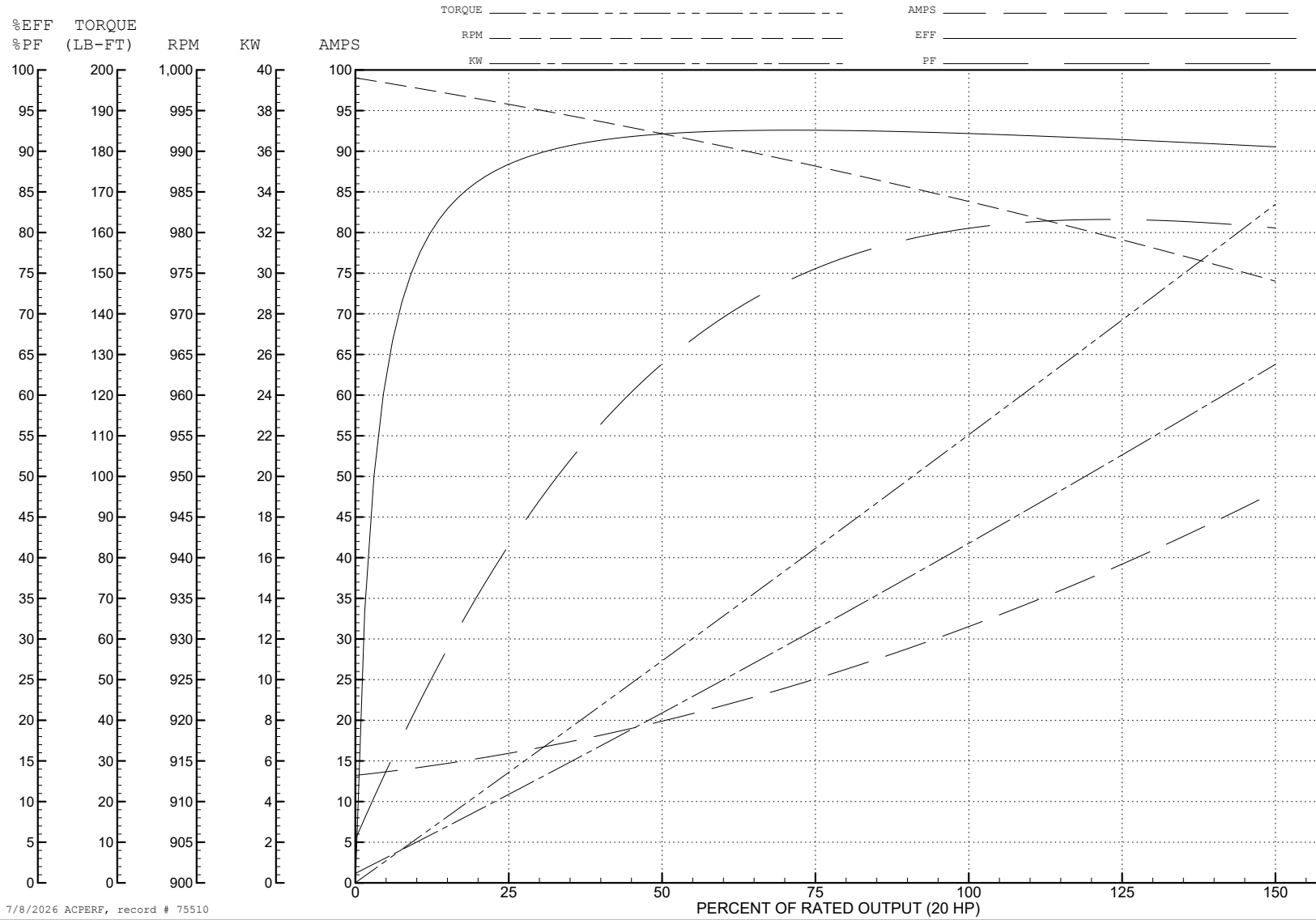
ABB Motors and Mechanical Inc.

WINDING # 12WGY116

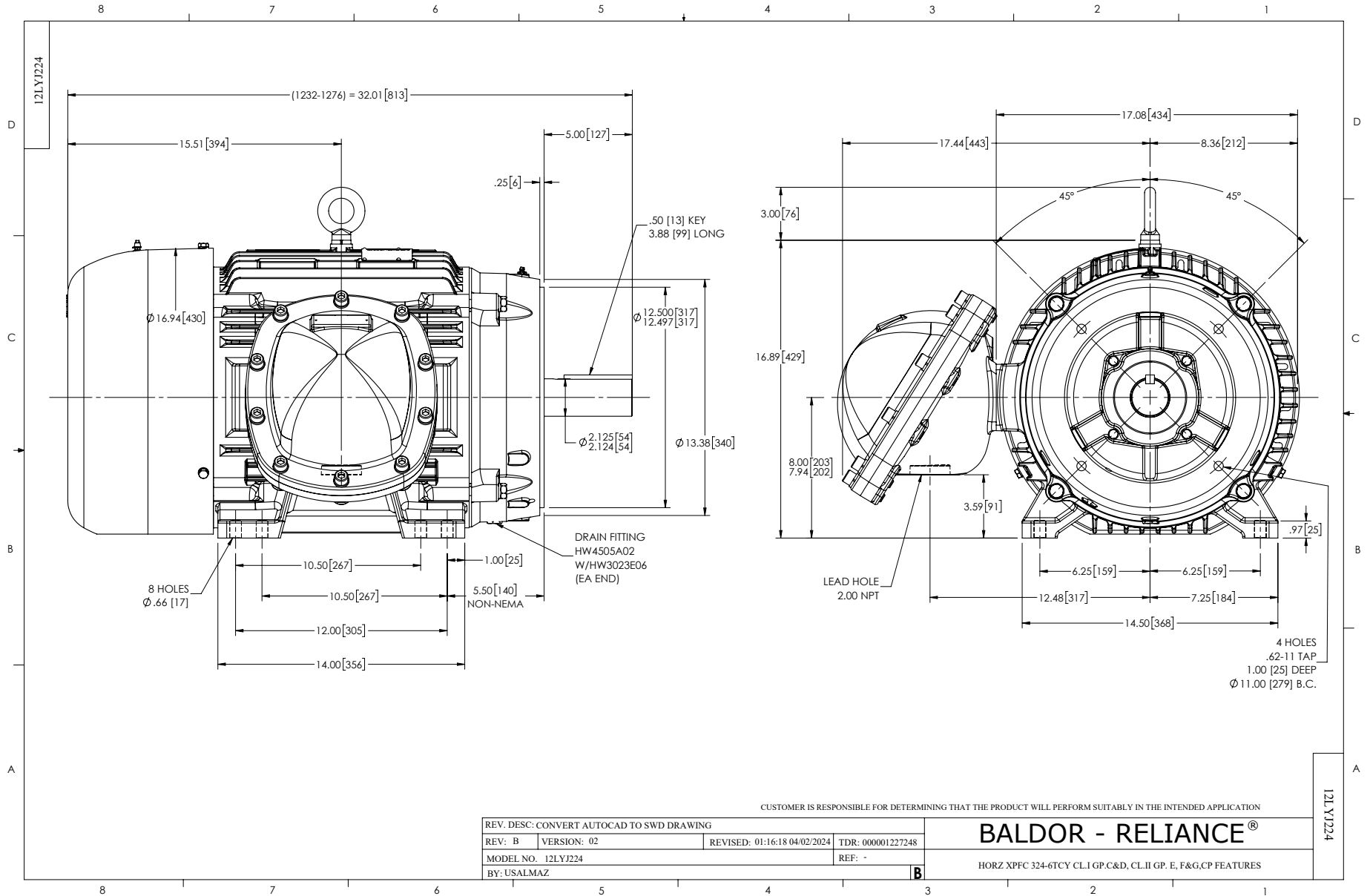
20 HP 3 PH 50 HZ 984 RPM 380 V 1260M

Typical performance - not guaranteed values.

TORQUES (LB-FT): PO=298 PU=122 LR=179 LRA=194



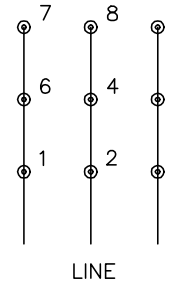
7/8/2026 ACPERF, record # 75510



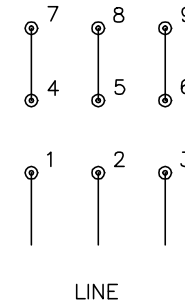
CD0180



LOW VOLTAGE
(2D)



HIGH VOLTAGE
(1D)



NOTES:

1. INTERCHANGE ANY TWO LINE LEADS TO REVERSE ROTATION.
2. OPTIONAL THERMOSTATS ARE PROVIDED WHEN SPECIFIED.
3. ACTUAL NUMBER OF INTERNAL PARALLEL CIRCUITS MAY BE A MULTIPLE OF THOSE SHOWN ABOVE.
4. LEAD COLORS ARE OPTIONAL. LEADS MUST ALWAYS BE NUMBERED AS SHOWN.

CD0180

REV. DESC: ADD CLASS CONN00000007		
REV. LTR: D	VERSION: 01	TDR: 000001099922
FILE: \AAA\00005\148	REVISED: 10: 25: 29 02/19/2019	BY: ENBRIRO
MTL: -	© □	

BALDOR - RELIANCE®

3PH, DV, 9 LEADS, DELTA CONNECTION

SH 1 of 1