



Customer information packet

CCPX21366T

3HP, 1165//970RPM, 3PH, 60HZ, 213TCY, XPFC, F1

Class - CLI GP C,D; CLII GP E,F,G

Division - Division I

Specifications

Enclosure	XPFC
Frame	213TCY
Frame Material	Iron
Frequency	50.00 Hz 60.00 Hz
Haz Area Class and Group	CLI GP C,D; CLII GP E,F,G
Haz Area Division	Division I
Motor Letter Type	Three Phase
Output @ Frequency	2.000 HP @ 50 HZ 3.000 HP @ 60 HZ
Phase	3
Synchronous Speed @ Frequency	1200 RPM @ 60 HZ
Voltage @ Frequency	230.0 V @ 60 HZ 190.0 V @ 50 HZ 460.0 V @ 60 HZ 380.0 V @ 50 HZ
Agency Approvals	UL CSA EEV
Ambient Temperature	40 °C
Auxillary Box	No Auxillary Box
Auxillary Box Lead Termination	None
Base Indicator	Rigid
Bearing Grease Type	Polyrex EM (-20F +300F)
Blower	None
Constant Torque Speed Range	6
Current @ Voltage	9.000 A @ 230.0 V 7.600 A @ 190.0 V 4.500 A @ 460.0 V 3.800 A @ 380.0 V
Design Code	B
Drip Cover	No Drip Cover
Duty Rating	CONT

Part detail

Revision	C
Type	AC
Mech. spec.	
Base	
Status	PRD/A
Elec. spec.	07WGX970
Layout	07LY-000-074
Eff. date	04-13-2021
CD Diagram	CD0005
Poles	06
Leads	9#14
Proprietary	False
Created date	05-08-2019

Efficiency @ 100% Load	89.5 %
Electrically Isolated Bearing	Not Electrically Isolated
Enclosure Modification	Severe Duty Features
Feedback Device	NO FEEDBACK
Haz Area Temp Code	T3C
Heater Indicator	No Heater
High Voltage Full Load Amps	3.8 a
Insulation Class	F
Inverter Code	Inverter Duty
IP Rating	IP55
KVA Code	K
Lifting Lugs	Standard Lifting Lugs
Locked Bearing Indicator	Locked Bearing
Max Speed	1800 rpm
Motor Lead Termination	Flying Leads
Motor Standards	NEMA
Motor Type	0736M
Mounting Arrangement	F1
Number of Poles	6
Overall Length	20.77 IN
Power Factor	71
Product Family	General Purpose
Pulley Face Code	C-Face
Rodent Screen	None
RoHS Status	ROHS NON-COMPLIANT
Service Factor	1.00
Shaft Diameter	1.375 IN
Shaft Ground Indicator	No Shaft Grounding
Shaft Rotation	Reversible
Speed	1165 rpm
Speed Code	Single Speed
Starting Method	Direct on line
Thermal Device - Bearing	None
Thermal Device - Winding	Normally Closed Thermostat

Vibration Sensor Indicator	No Vibration Sensor
Winding Thermal 1	None
Winding Thermal 2	None

Nameplate**NP2033XPSLEV**

NO.		CC	010A				
S/N		TEMP CODE	T3C				
SPEC.	07-0000-0110	INV.TYPE	PWM				
CAT.NO.	CCPX21366T	C HP FR	60	C HP TO	90		
HP	3//2	CT HZ FROM	6	CT HZ TO	60		
VOLTS	230/460//190/380	VT HZ FROM	6	VT HZ TO	60		
AMPS	9/4.5//7.6/3.8	MAG CUR	4.6/2.3				
RPM	1165//970	MX RPM	1800				
HZ	60//50	PH	3	CL	F	NOM.EFF.	89.5
SER.F.	1.00	DES	B	SL HZ	1.7	WK2	0.895
FRAME	213TCY	RATING	40C AMB-CONT				
BLANK	55C AMB @ 1.0 SF						
	1.15 SF ON SINEWAVE		NEMA MG-1 PT 5,IP55				

AC Induction Motor Performance Data

Record # 75626

Typical performance - not guaranteed values

Winding: 07WGX970-R008		Type: 0736M		Enclosure: XPFC	
Nameplate Data			460 V, 60 Hz: High Voltage Connection		
Rated Output (HP)	3	Full Load Torque	13.61 LB-FT		
Volts	230/460//190/380	Start Configuration	direct on line		
Full Load Amps	9/4.5//7.6/3.8	Breakdown Torque	51.71 LB-FT		
R.P.M.	1165//970	Pull-up Torque	25.77 LB-FT		
Hz	60//50	Locked-rotor Torque	31.08 LB-FT		
NEMA Design Code	B	Starting Current	32.19 A		
Service Factor (S.F.)	1	No-load Current	2.26 A		
NEMA Nom. Eff.	89.5	Line-line Res. @ 25°C	3 Ω		
Rating - Duty	40C AMB-CONT	Temp. Rise @ Rated Load	34°C		
S.F. Amps		Temp. Rise @ S.F. Load	41°C		
		Locked-rotor Power Factor	23.3		
		Rotor inertia	0.895 LB-FT ²		

Load Characteristics 460 V, 60 Hz, 3 HP

% of Rated Load	25	50	75	100	125	150
Power Factor	35	54	65	72	75	76
Efficiency	82.8	88.3	89.6	89.6	88.9	87.3
Speed	1192	1184	1176	1166	1156	1143
Line amperes	2.48	2.96	3.62	4.41	5.29	6.33

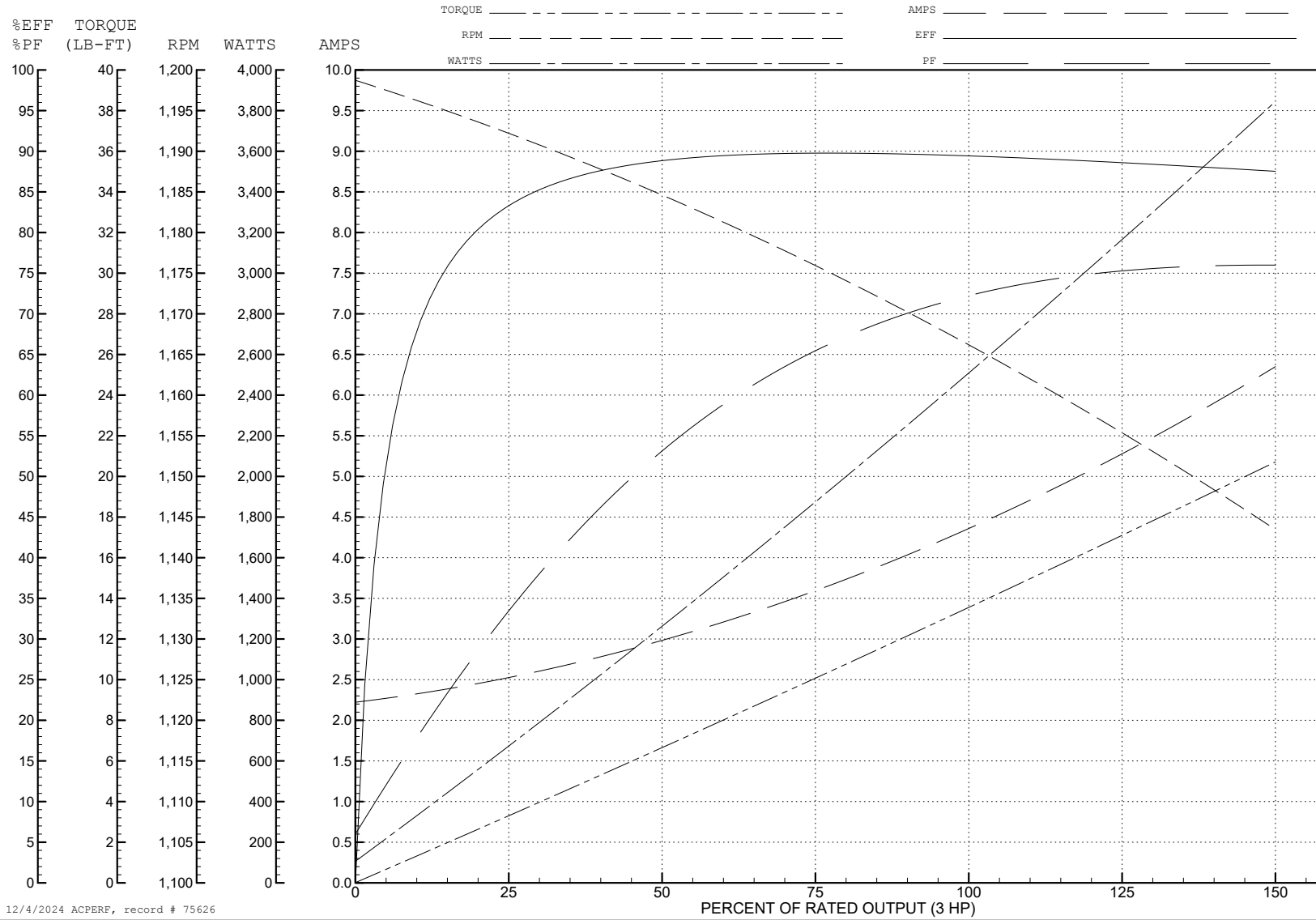
ABB Motors and Mechanical Inc.

WINDING # 07WGX970

3 HP 3 PH 60 HZ 1166 RPM 460 V 0736M

Typical performance - not guaranteed values.

TORQUES (LB-FT): PO=51.71 PU=25.77 LR=31.08 LRA=32.19



12/4/2024 ACPERF, record # 75626

AC Induction Motor Performance Data

Record # 75628

Typical performance - not guaranteed values

Winding: 07WGX970-R008		Type: 0736M		Enclosure: XPFC	
Nameplate Data			380 V, 50 Hz: High Voltage Connection		
Rated Output (HP)	3//2		Full Load Torque	10.88 LB-FT	
Volts	230/460//190/380		Start Configuration	direct on line	
Full Load Amps	9/4.5//7.6/3.8		Breakdown Torque	49.79 LB-FT	
R.P.M.	1165//970		Pull-up Torque	28.43 LB-FT	
Hz	60//50	Phase	3	Locked-rotor Torque	34.29 LB-FT
NEMA Design Code	B KVA Code		K	Starting Current	31.53 A
Service Factor (S.F.)			1	No-load Current	2.23 A
NEMA Nom. Eff.	89.5	Power Factor	71	Line-line Res. @ 25°C	3 Ω
Rating - Duty	40C AMB-CONT			Temp. Rise @ Rated Load	27°C
S.F. Amps				Temp. Rise @ S.F. Load	32°C
				Locked-rotor Power Factor	26.9
				Rotor inertia	0.895 LB-FT ²

Load Characteristics 380 V, 50 Hz, 2 HP

% of Rated Load	25	50	75	100	125	150
Power Factor	30	48	60	67	72	75
Efficiency	79	86.1	88.2	88.5	88.3	86.9
Speed	993	987	980	972	965	955
Line amperes	2.4	2.75	3.24	3.82	4.46	5.22

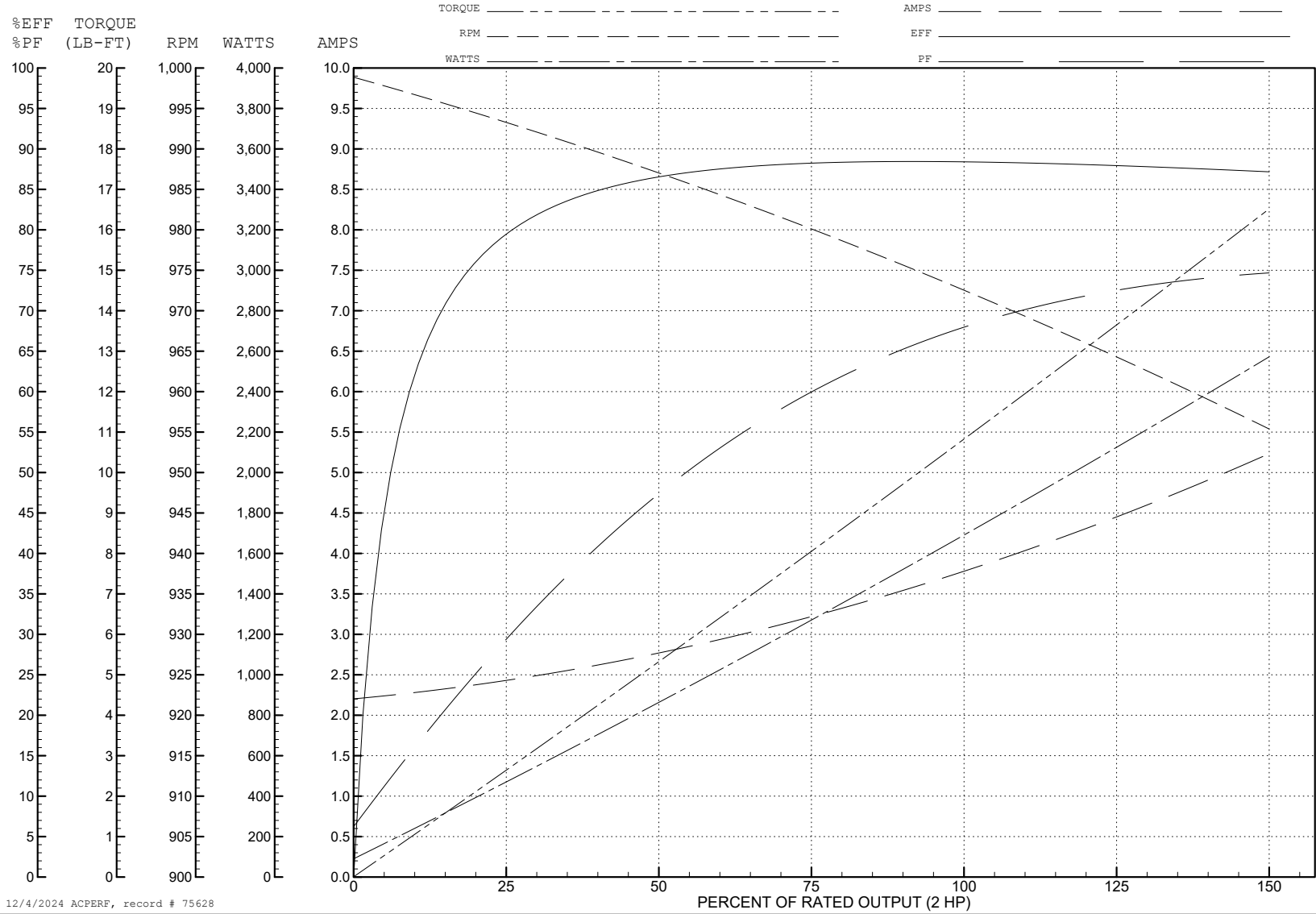
ABB Motors and Mechanical Inc.

WINDING # 07WGX970

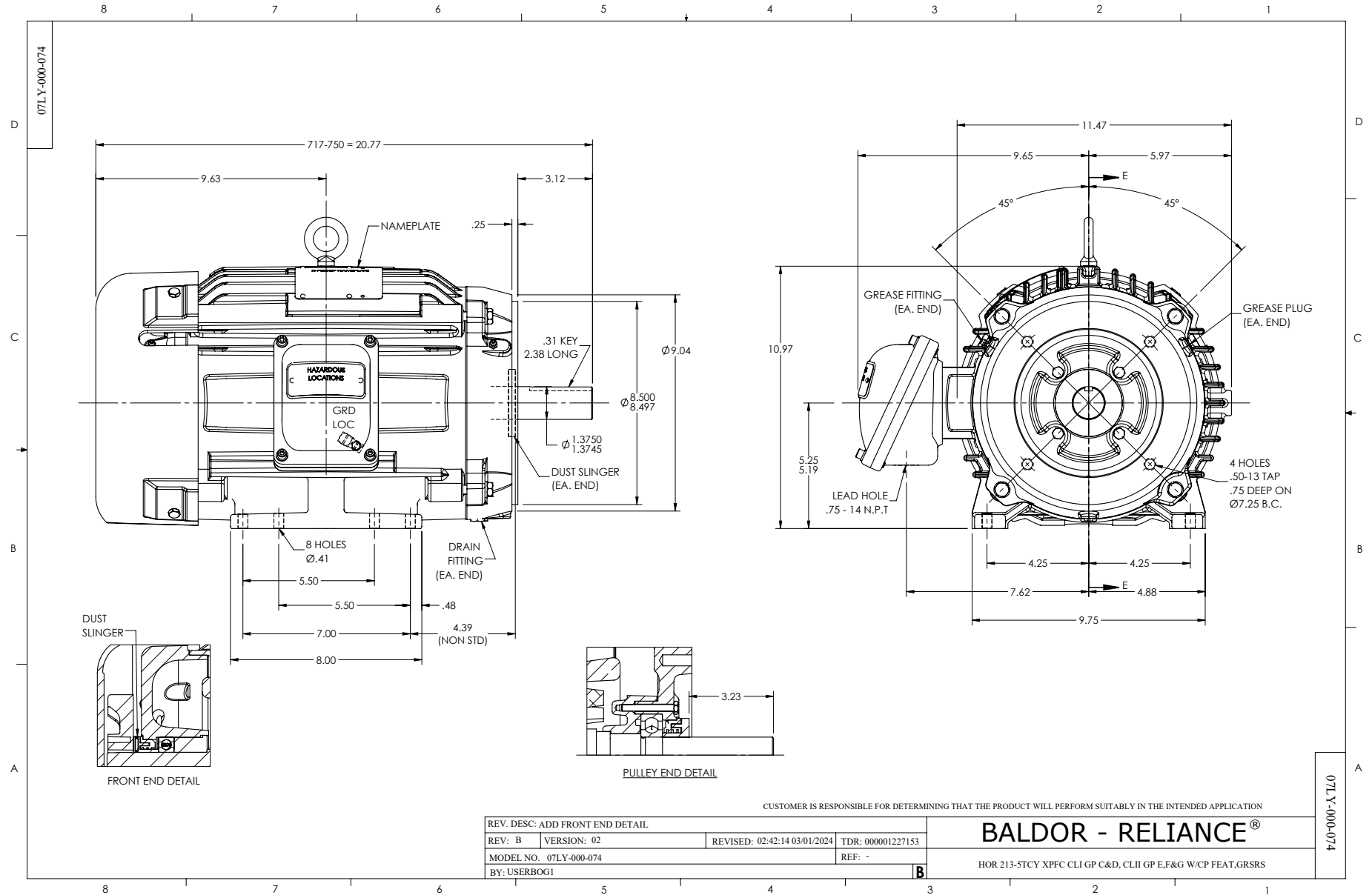
Typical performance - not guaranteed values.

2 HP 3 PH 50 HZ 972 RPM 380 V 0736M

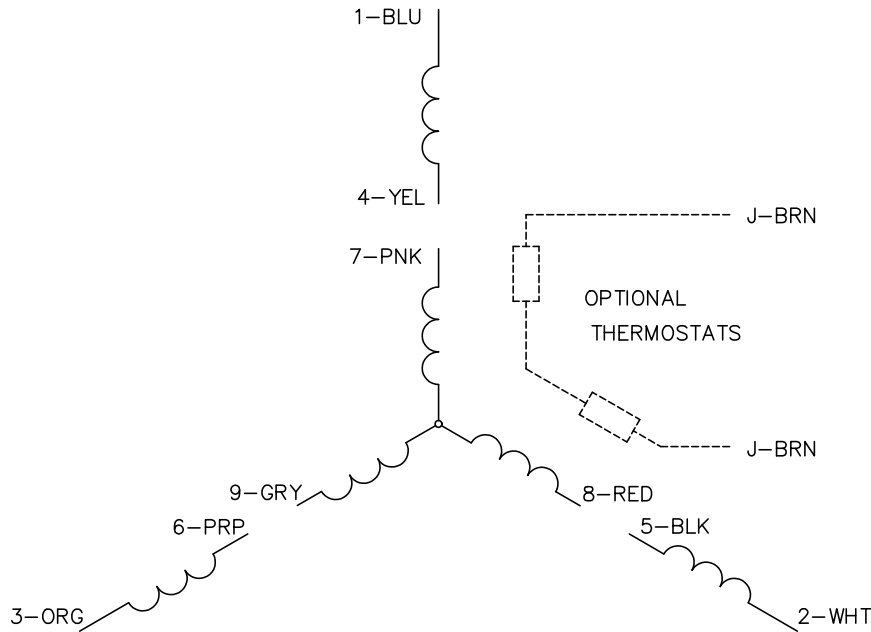
TORQUES (LB-FT): PO=49.79 PU=28.43 LR=34.29 LRA=31.53



12/4/2024 ACPERF, record # 75628



CD0005

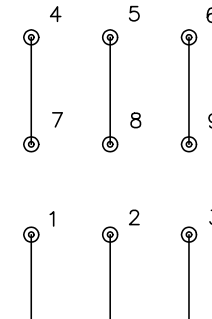


LOW VOLTAGE
(2Y)



LINE

HIGH VOLTAGE
(1Y)



LINE

NOTES:

1. INTERCHANGE ANY TWO LINE LEADS TO REVERSE ROTATION.
2. OPTIONAL THERMOSTATS ARE PROVIDED WHEN SPECIFIED.
3. ACTUAL NUMBER OF INTERNAL PARALLEL CIRCUITS MAY BE A MULTIPLE OF THOSE SHOWN ABOVE.
4. LEAD COLORS ARE OPTIONAL. LEADS MUST ALWAYS BE NUMBERED AS SHOWN.

CD0005

REV. DESC: REVISE TO SHOW OPTIONAL COLORS			
REV. LTR: E	BY: JLP	REVISED: 01/19/99 10:15	TDR: 0171435
S00000		FILE: AAA00005140	MDL: -
		MTL: -	

BALDOR ELECTRIC Co.

3PH, DV, 9 LEADS