

BALDOR • RELIANCE

Customer information packet

CCPX18526T

5HP, 3500//2900RPM, 3PH, 60HZ, 184TC, XPFC, F1

Class - CLI GP C,D; CLII GP E,F,G

Division - Division I

Specifications

Enclosure	XPFC
Frame	184TC
Frame Material	Iron
Frequency	50.00 Hz 60.00 Hz
Haz Area Class and Group	CLI GP C,D; CLII GP E,F,G
Haz Area Division	Division I
Motor Letter Type	Three Phase
Output @ Frequency	3.000 HP @ 50 HZ 5.000 HP @ 60 HZ
Phase	3
Synchronous Speed @ Frequency	3600 RPM @ 60 HZ
Voltage @ Frequency	230.0 V @ 60 HZ 190.0 V @ 50 HZ 460.0 V @ 60 HZ 380.0 V @ 50 HZ
Agency Approvals	UL CSA EEV
Ambient Temperature	40 °C
Auxillary Box	No Auxillary Box
Auxillary Box Lead Termination	None
Base Indicator	Rigid
Bearing Grease Type	Polyrex EM (-20F +300F)
Blower	None
Constant Torque Speed Range	6
Current @ Voltage	8.400 A @ 190.0 V 5.500 A @ 460.0 V 4.200 A @ 380.0 V 11.000 A @ 230.0 V
Design Code	A
Drip Cover	No Drip Cover
Duty Rating	CONT

Part detail

Revision	E
Type	AC
Mech. spec.	
Base	
Status	PRD/A
Elec. spec.	06WGW431
Layout	06LYK422
Eff. date	05-02-2024
CD Diagram	CD0005
Poles	02
Leads	9#16
Proprietary	False
Created date	04-18-2019

Efficiency @ 100% Load	88.5 %
Electrically Isolated Bearing	Not Electrically Isolated
Enclosure Modification	Severe Duty Features
Feedback Device	NO FEEDBACK
Haz Area Temp Code	T3C
Heater Indicator	No Heater
High Voltage Full Load Amps	4.2 a
Insulation Class	F
Inverter Code	Inverter Duty
IP Rating	IP55
KVA Code	L
Lifting Lugs	Standard Lifting Lugs
Locked Bearing Indicator	Locked Bearing
Max Speed	5400 rpm
Motor Lead Termination	Flying Leads
Motor Standards	NEMA
Motor Type	0640M
Mounting Arrangement	F1
Number of Poles	2
Overall Length	18.33 IN
Power Factor	96
Product Family	Super-E Chemical Processing
Pulley Face Code	C-Face
Rodent Screen	None
RoHS Status	ROHS NON-COMPLIANT
Service Factor	1.00
Shaft Diameter	1.125 IN
Shaft Ground Indicator	No Shaft Grounding
Shaft Rotation	Reversible
Speed	3500 rpm
Speed Code	Single Speed
Starting Method	Direct on line
Thermal Device - Bearing	None
Thermal Device - Winding	Normally Closed Thermostat

Vibration Sensor Indicator**No Vibration Sensor****Winding Thermal 1****None****Winding Thermal 2****None**

Nameplate

NP2033XPSLEV										
NO.		CC	010A							
S/N		TEMP CODE	T3C							
SPEC.	06-0000-0103		INV.TYPE	PWM						
CAT.NO.	CCPX18526T		C HP FR	60	C HP TO	90				
HP	5//3		CT HZ FROM	6	CT HZ TO	60				
VOLTS	230/460//190/380		VT HZ FROM	6	VT HZ TO	60				
AMPS	11/5.5//8.4/4.2		MAG CUR	3/1.5						
RPM	3500//2900		MX RPM	5400						
HZ	60//50	PH	3	CL	F	NOM.EFF.	88.5			
SER.F.	1.00	DES	A	SL HZ	1.7	WK2	0.18			
FRAME	184TC	RATING	40C AMB-CONT							
BLANK	1.15 SF SINEWAVE									
	55C AMB @ 1.0 SF					NEMA MG-1 PT 5,IP55				

AC Induction Motor Performance Data

Record # 72833

Typical performance - not guaranteed values

Winding: 06WGW431-R028		Type: 0640M		Enclosure: XPFC		
Nameplate Data			460 V, 60 Hz: High Voltage Connection			
Rated Output (HP)	5//3		Full Load Torque	7.61 LB-FT		
Volts	230/460//190/380		Start Configuration	direct on line		
Full Load Amps	11/5.5//8.4/4.2		Breakdown Torque	35.64 LB-FT		
R.P.M.	3500//2900		Pull-up Torque	26.7 LB-FT		
Hz	60//50	Phase	3	Locked-rotor Torque	30.8 LB-FT	
NEMA Design Code	A		KVA Code	L	Starting Current	62.3 A
Service Factor (S.F.)	1			No-load Current	1.55 A	
NEMA Nom. Eff.	88.5	Power Factor	96	Line-line Res. @ 25°C	2.12 Ω	
Rating - Duty	40C AMB-CONT			Temp. Rise @ Rated Load	49°C	
				Locked-rotor Power Factor	43	
				Rotor inertia	0.179 LB-FT ²	

Load Characteristics 460 V, 60 Hz, 5 HP

% of Rated Load	25	50	75	100	125	150
Power Factor	75	88	95	96	96	93
Efficiency	75.1	83.3	85.8	86.2	85.7	84.8
Speed	3562	3533	3503	3470	3435	3398
Line amperes	2.14	3.27	4.38	5.7	7.1	8.72

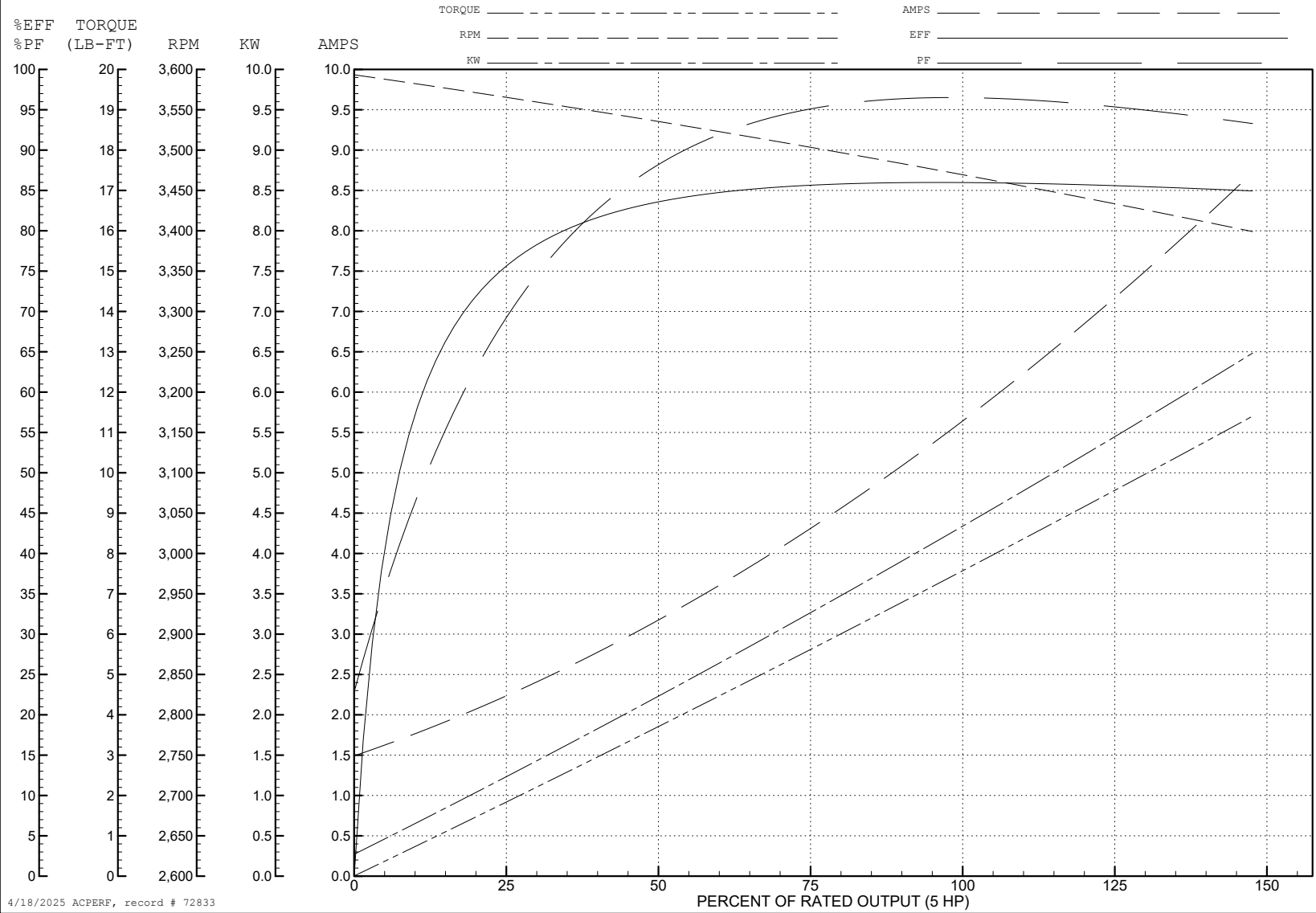
ABB Motors and Mechanical Inc.

WINDING # 06WGW431

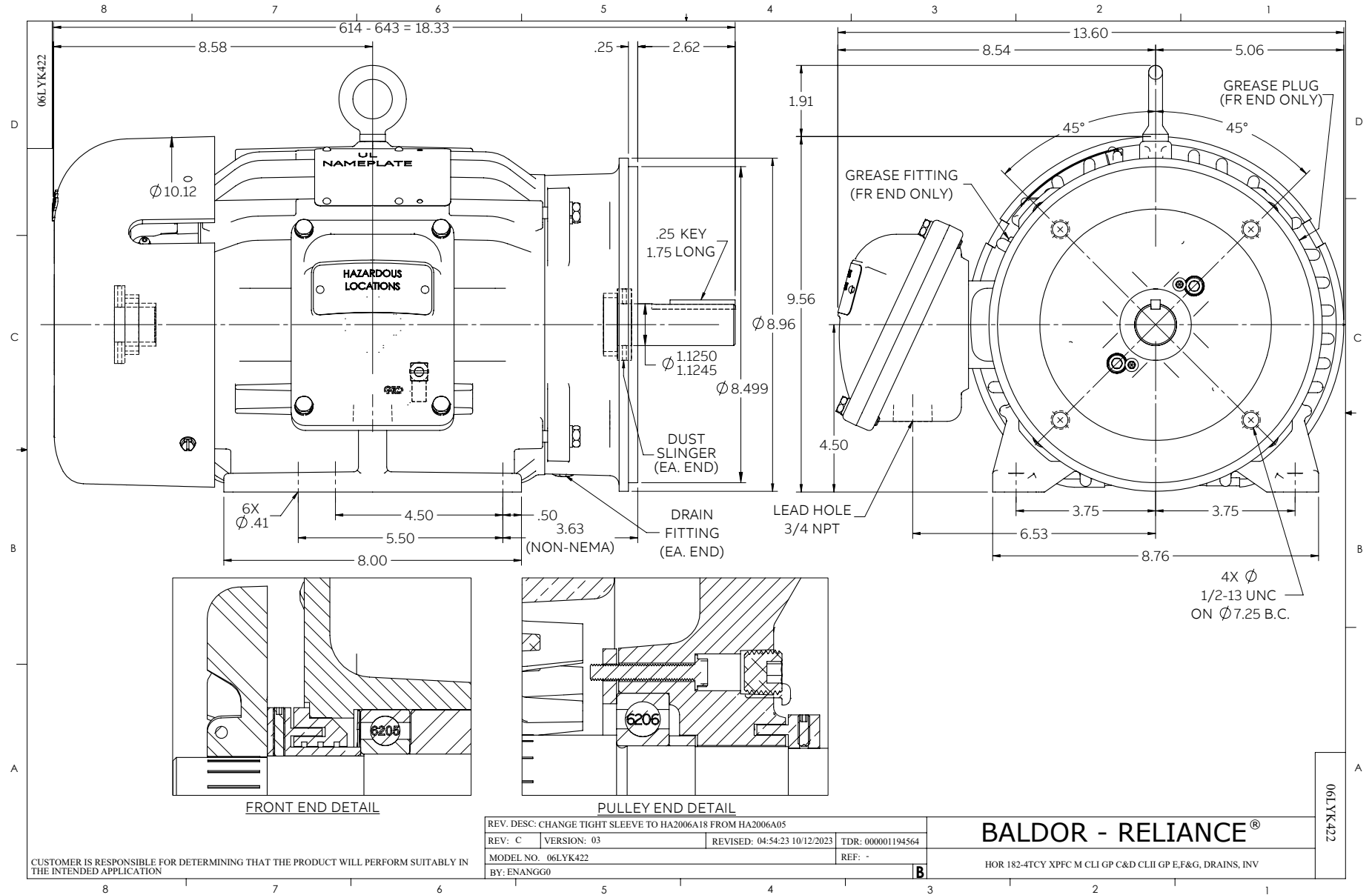
5 HP 3 PH 60 HZ 3470 RPM 460 V 0640M

Typical performance - not guaranteed values.

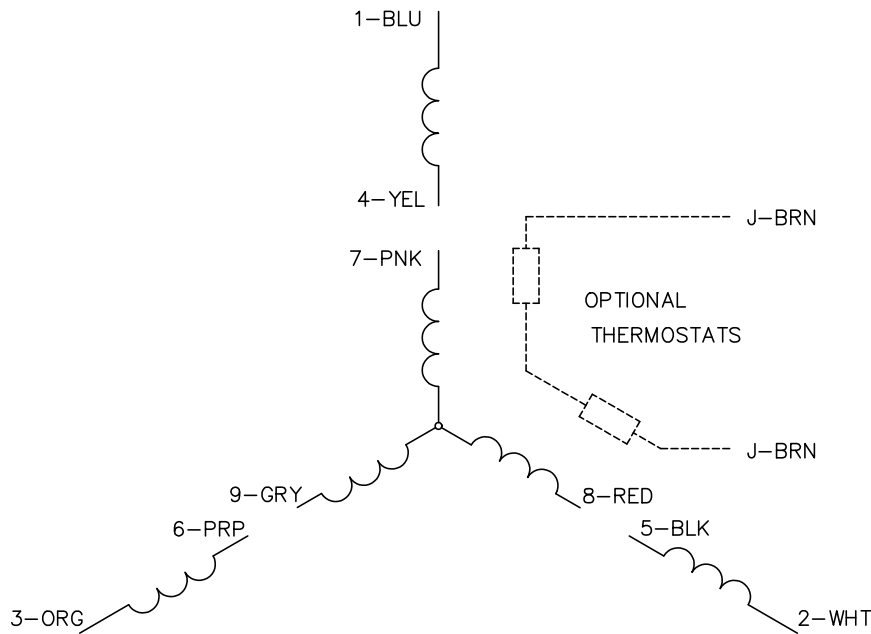
TORQUES (LB-FT): PO=35.64 PU=26.7 LR=30.8 LRA=62.3



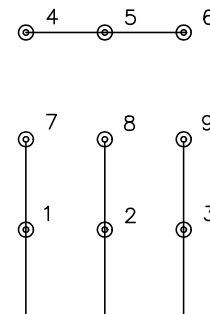
4/18/2025 ACPERF, record # 72833



CD0005

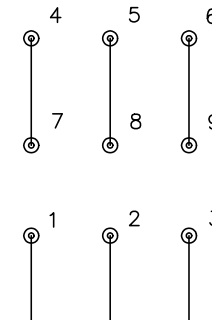


LOW VOLTAGE (2Y)



LINE

HIGH VOLTAGE (1Y)



LINE

NOTES:

1. INTERCHANGE ANY TWO LINE LEADS TO REVERSE ROTATION.
2. OPTIONAL THERMOSTATS ARE PROVIDED WHEN SPECIFIED.
3. ACTUAL NUMBER OF INTERNAL PARALLEL CIRCUITS MAY BE A MULTIPLE OF THOSE SHOWN ABOVE.
4. LEAD COLORS ARE OPTIONAL. LEADS MUST ALWAYS BE NUMBERED AS SHOWN.

REV. DESC: REVISE TO SHOW OPTIONAL COLORS			
REV. LTR: E	BY: JLP	REVISED: 01/19/99 10:15	TDR: 0171435
S00000		FILE: AAA00005140	MDL: -
		MTL: -	

BALDOR ELECTRIC Co.

3PH, DV, 9 LEADS

CD0005