



Customer information packet

CCPX18326T

3HP, 3470//2890RPM, 3PH, 60HZ, 182TC, XPFC, F1

Class - CLI GP C,D; CLII GP E,F,G

Division - Division I

Specifications

| | |
|--------------------------------|--|
| Enclosure | XPFC |
| Frame | 182TC |
| Frame Material | Iron |
| Frequency | 50.00 Hz 60.00 Hz |
| Haz Area Class and Group | CLI GP C,D; CLII GP E,F,G |
| Haz Area Division | Division I |
| Motor Letter Type | Three Phase |
| Output @ Frequency | 2.000 HP @ 50 HZ 3.000 HP @ 60 HZ |
| Phase | 3 |
| Synchronous Speed @ Frequency | 3600 RPM @ 60 HZ |
| Voltage @ Frequency | 230.0 V @ 60 HZ 190.0 V @ 50 HZ 460.0 V @ 60 HZ 380.0 V @ 50 HZ |
| Agency Approvals | UL CSA EEV |
| Ambient Temperature | 40 °C |
| Auxillary Box | No Auxillary Box |
| Auxillary Box Lead Termination | None |
| Base Indicator | Rigid |
| Bearing Grease Type | Polyrex EM (-20F +300F) |
| Blower | None |
| Constant Torque Speed Range | 6 |
| Current @ Voltage | 7.600 A @ 230.0 V 6.400 A @ 190.0 V 3.800 A @ 460.0 V 3.200 A @ 380.0 V |
| Design Code | B |
| Drip Cover | No Drip Cover |
| Duty Rating | CONT |

Part detail

| | |
|--------------|------------|
| Revision | E |
| Type | AC |
| Mech. spec. | |
| Base | |
| Status | PRD/A |
| Elec. spec. | 06WGY471 |
| Layout | 06LYK422 |
| Eff. date | 05-02-2024 |
| CD Diagram | CD0005 |
| Poles | 02 |
| Leads | 9#16 |
| Proprietary | False |
| Created date | 04-17-2019 |

| | |
|-------------------------------|----------------------------|
| Efficiency @ 100% Load | 86.5 % |
| Electrically Isolated Bearing | Not Electrically Isolated |
| Enclosure Modification | Severe Duty Features |
| Feedback Device | NO FEEDBACK |
| Haz Area Temp Code | T3C |
| Heater Indicator | No Heater |
| High Voltage Full Load Amps | 3.2 a |
| Insulation Class | F |
| Inverter Code | Not Inverter |
| IP Rating | IP55 |
| KVA Code | K |
| Lifting Lugs | Standard Lifting Lugs |
| Locked Bearing Indicator | Locked Bearing |
| Max Speed | 5400 rpm |
| Motor Lead Termination | Flying Leads |
| Motor Standards | NEMA |
| Motor Type | 0618M |
| Mounting Arrangement | F1 |
| Number of Poles | 2 |
| Overall Length | 18.33 IN |
| Power Factor | 89 |
| Product Family | General Purpose |
| Pulley Face Code | C-Face |
| Rodent Screen | None |
| RoHS Status | ROHS NON-COMPLIANT |
| Service Factor | 1.00 |
| Shaft Diameter | 1.125 IN |
| Shaft Ground Indicator | No Shaft Grounding |
| Shaft Rotation | Reversible |
| Speed | 3470 rpm |
| Speed Code | Single Speed |
| Starting Method | Direct on line |
| Thermal Device - Bearing | None |
| Thermal Device - Winding | Normally Closed Thermostat |

| Vibration Sensor Indicator | No Vibration Sensor |
|-----------------------------------|----------------------------|
| Winding Thermal 1 | None |
| Winding Thermal 2 | None |

Nameplate

| NP2033XPSLEV | | | | | | | | | | |
|----------------|------------------|------------------|-------------------|--------------|-----------------|---------------------|-------|--|--|--|
| NO. | | CC | 010A | | | | | | | |
| S/N | | TEMP CODE | T3C | | | | | | | |
| SPEC. | 06-0000-0105 | | INV.TYPE | PWM | | | | | | |
| CAT.NO. | CCPX18326T | | C HP FR | 60 | C HP TO | 90 | | | | |
| HP | 3//2 | | CT HZ FROM | 6 | CT HZ TO | 60 | | | | |
| VOLTS | 230/460//190/380 | | VT HZ FROM | 6 | VT HZ TO | 60 | | | | |
| AMPS | 7.6/3.8//6.4/3.2 | | MAG CUR | 3.2/1.6 | | | | | | |
| RPM | 3470//2890 | | MX RPM | 5400 | | | | | | |
| HZ | 60//50 | PH | 3 | CL | B | NOM.EFF. | 86.5 | | | |
| SER.F. | 1.00 | DES | B | SL HZ | | WK2 | 0.079 | | | |
| FRAME | 182TC | RATING | 40C AMB-CONT | | | | | | | |
| BLANK | 1.15 SF SINEWAVE | | | | | | | | | |
| | 55C AMB @ 1.0 SF | | | | | NEMA MG-1 PT 5,IP55 | | | | |

AC Induction Motor Performance Data

Record # 69211

Typical performance - not guaranteed values

| Winding: 06WGY471-R002 | | Type: 0618M | | Enclosure: TEFC | |
|-------------------------------|-------------------|---------------------|--|----------------------------------|---------------------------|
| Nameplate Data | | | 460 V, 60 Hz: High Voltage Connection | | |
| Rated Output (HP) | 3//2 | | Full Load Torque | 4.51 LB-FT | |
| Volts | 230/460//190/380 | | Start Configuration | direct on line | |
| Full Load Amps | 7.6/3.8//6.4/3.2 | | Breakdown Torque | 25.5 LB-FT | |
| R.P.M. | 3470//2890 | | Pull-up Torque | 9.08 LB-FT | |
| Hz | 60//50 | Phase | 3 | Locked-rotor Torque | 11.9 LB-FT |
| NEMA Design Code | B KVA Code | | K | Starting Current | 29.3 A |
| Service Factor (S.F.) | | | 1 | No-load Current | 1.64 A |
| NEMA Nom. Eff. | 86.5 | Power Factor | 89 | Line-line Res. @ 25°C | 6.24 Ω |
| Rating - Duty | | | 40C AMB-CONT | Temp. Rise @ Rated Load | 45°C |
| S.F. Amps | | | | Temp. Rise @ S.F. Load | 56°C |
| | | | | Locked-rotor Power Factor | 59.2 |
| | | | | Rotor inertia | 0.0795 LB-FT ² |

Load Characteristics 460 V, 60 Hz, 3 HP

| % of Rated Load | 25 | 50 | 75 | 100 | 125 | 150 |
|------------------------|-----------|-----------|-----------|------------|------------|------------|
| Power Factor | 47 | 70 | 81 | 87 | 90 | 91 |
| Efficiency | 81.1 | 86.6 | 87.4 | 86.6 | 85.2 | 83.1 |
| Speed | 3568 | 3538 | 3505 | 3468 | 3430 | 3382 |
| Line amperes | 1.82 | 2.29 | 2.94 | 3.71 | 4.53 | 5.5 |

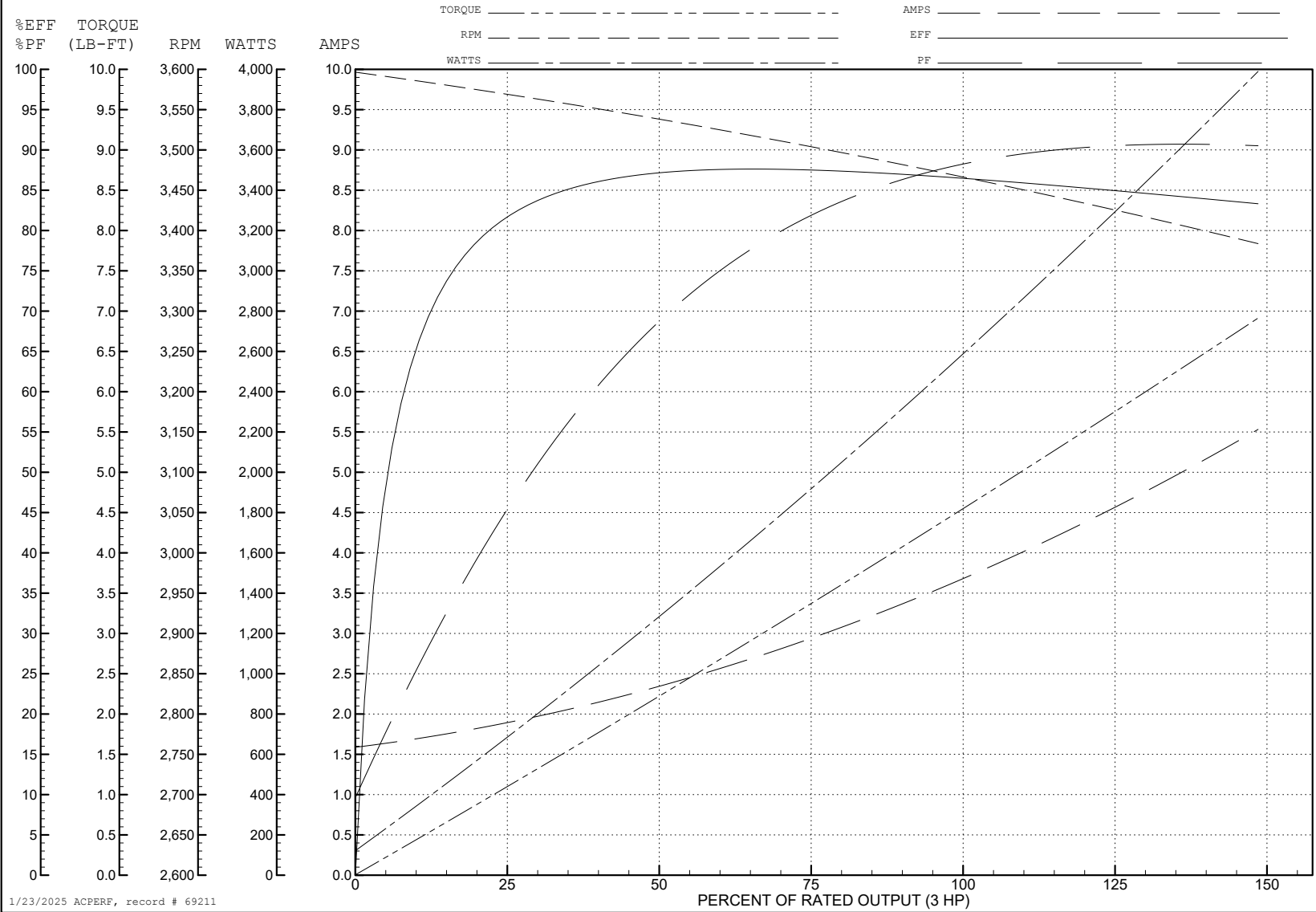
ABB Motors and Mechanical Inc.

WINDING # 06WGY471

3 HP 3 PH 60 HZ 3468 RPM 460 V 0618M

Typical performance - not guaranteed values.

TORQUES (LB-FT): PO=25.5 PU=9.08 LR=11.9 LRA=29.3



1/23/2025 ACPERF, record # 69211

AC Induction Motor Performance Data

Record # 69212

Typical performance - not guaranteed values

| Winding: 06WGY471-R002 | | Type: 0618M | Enclosure: TEFC | | |
|------------------------|------------------|--------------|--|---------------------------|-------------|
| Nameplate Data | | | 380 V, 50 Hz: High Voltage Connection | | |
| Rated Output (HP) | 3//2 | | Full Load Torque | 3.61 LB-FT | |
| Volts | 230/460//190/380 | | Start Configuration | direct on line | |
| Full Load Amps | 7.6/3.8//6.4/3.2 | | Breakdown Torque | 23.13 LB-FT | |
| R.P.M. | 3470//2890 | | Pull-up Torque | 9.15 LB-FT | |
| Hz | 60//50 | Phase | 3 | Locked-rotor Torque | 11.99 LB-FT |
| NEMA Design Code | B | KVA Code | K | Starting Current | 27.03 A |
| Service Factor (S.F.) | 1 | | No-load Current | 1.6 A | |
| NEMA Nom. Eff. | 86.5 | Power Factor | 89 | Line-line Res. @ 25°C | 6.24 Ω |
| Rating - Duty | 40C AMB-CONT | | Temp. Rise @ Rated Load | 36°C | |
| S.F. Amps | | | Temp. Rise @ S.F. Load | 43°C | |
| | | | Locked-rotor Power Factor | 65.7 | |
| | | | Rotor inertia | 0.0795 LB-FT ² | |

Load Characteristics 380 V, 50 Hz, 2 HP

| % of Rated Load | 25 | 50 | 75 | 100 | 125 | 150 |
|-----------------|------|------|------|------|------|------|
| Power Factor | 44 | 65 | 78 | 84 | 88 | 90 |
| Efficiency | 73.4 | 81.5 | 84.1 | 84.1 | 83.2 | 81.7 |
| Speed | 2972 | 2947 | 2921 | 2890 | 2860 | 2821 |
| Line amperes | 1.73 | 2.09 | 2.58 | 3.18 | 3.82 | 4.57 |

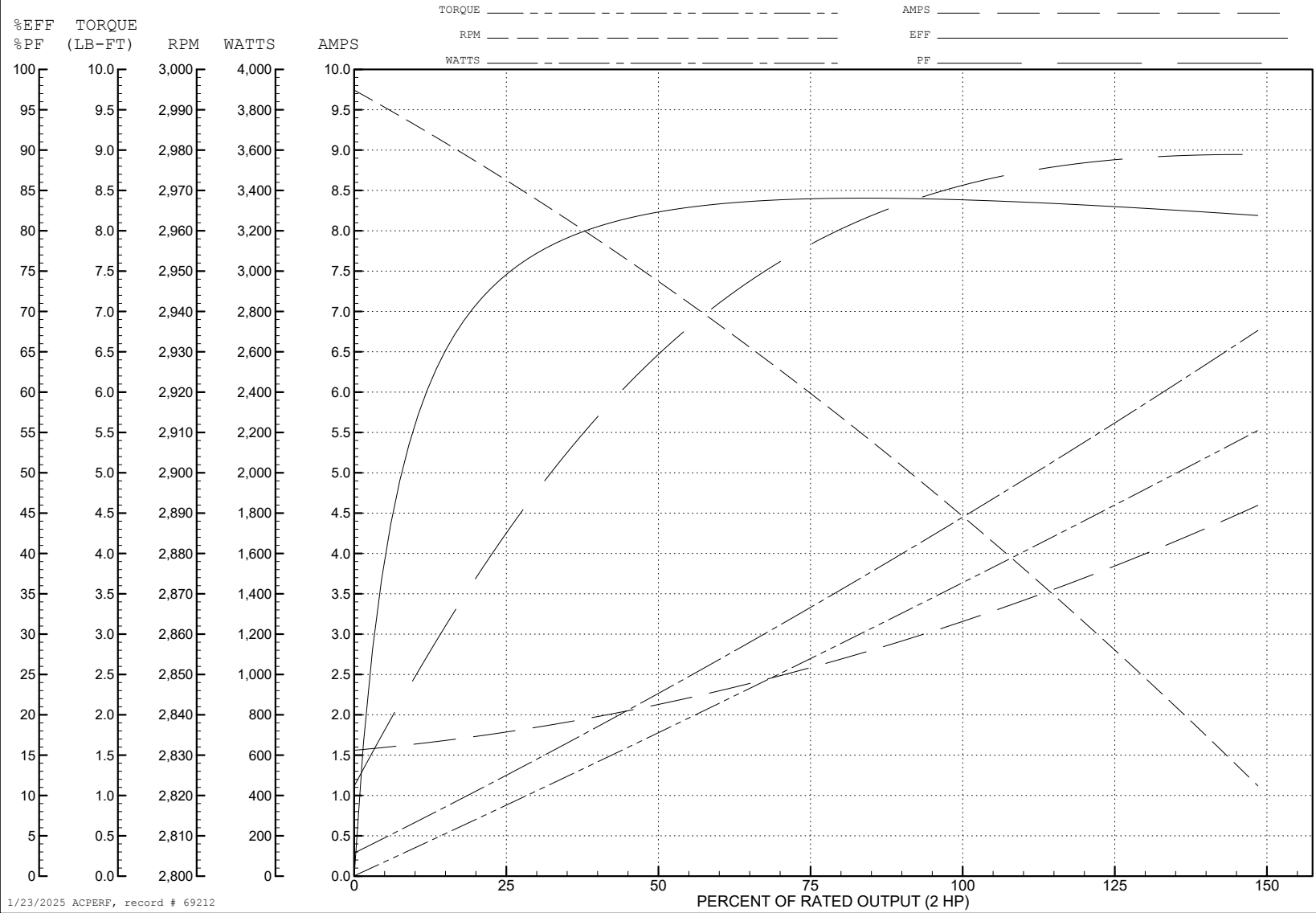
ABB Motors and Mechanical Inc.

WINDING # 06WGY471

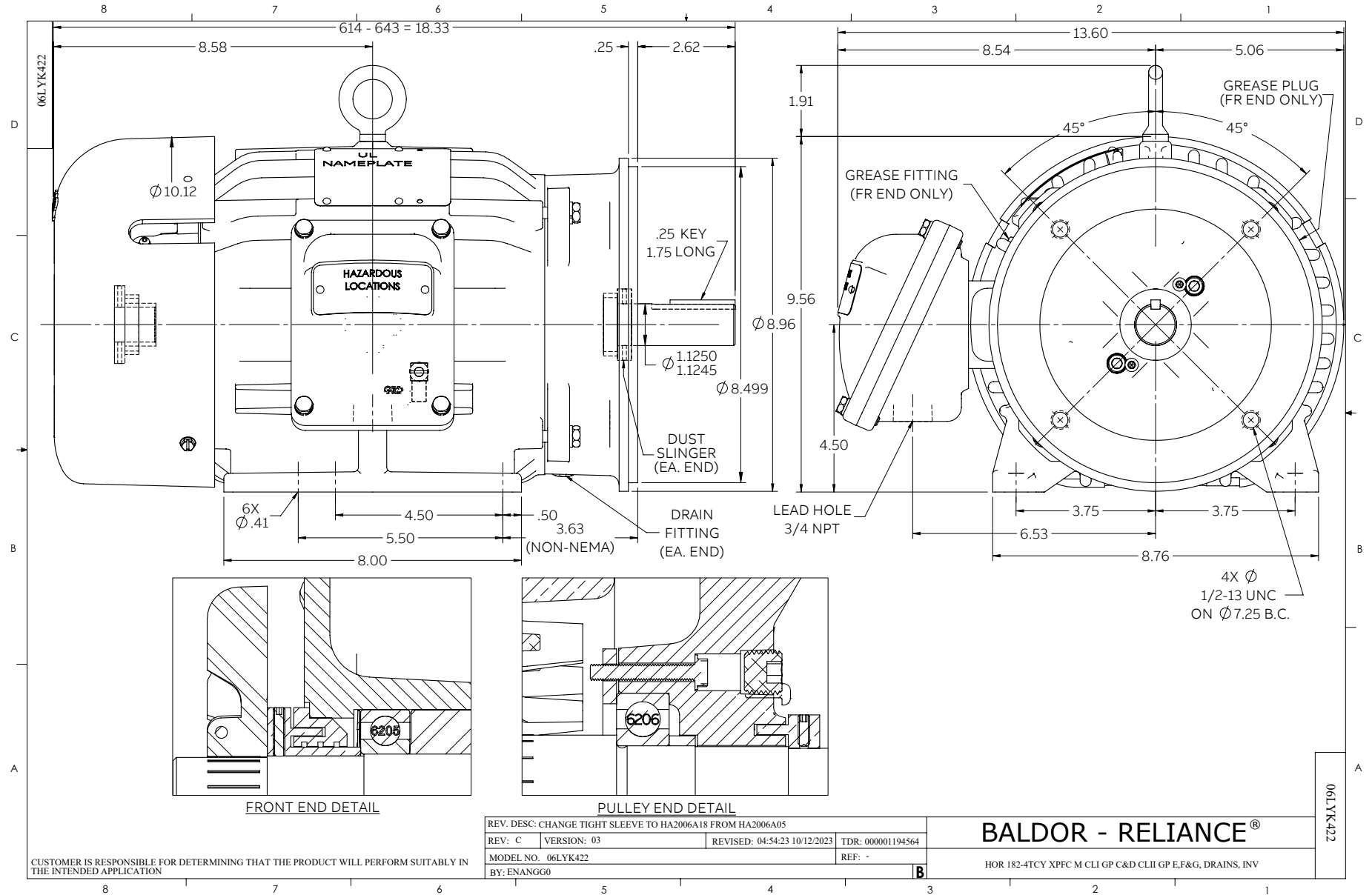
Typical performance - not guaranteed values.

2 HP 3 PH 50 HZ 2890 RPM 380 V 0618M

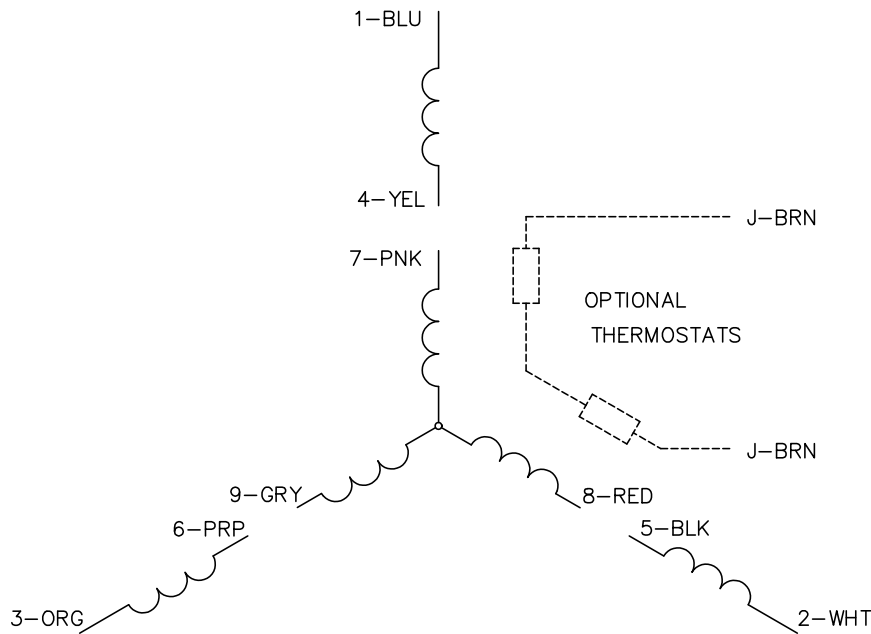
TORQUES (LB-FT): PO=23.13 PU=9.15 LR=11.99 LRA=27.03



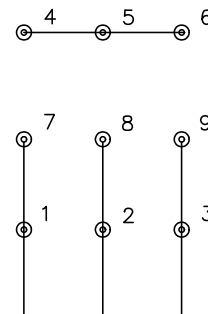
1/23/2025 ACPERF, record # 69212



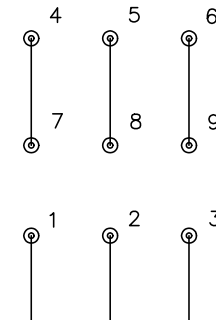
CD0005



LOW VOLTAGE (2Y)



HIGH VOLTAGE (1Y)



NOTES:

1. INTERCHANGE ANY TWO LINE LEADS TO REVERSE ROTATION.
2. OPTIONAL THERMOSTATS ARE PROVIDED WHEN SPECIFIED.
3. ACTUAL NUMBER OF INTERNAL PARALLEL CIRCUITS MAY BE A MULTIPLE OF THOSE SHOWN ABOVE.
4. LEAD COLORS ARE OPTIONAL. LEADS MUST ALWAYS BE NUMBERED AS SHOWN.

CD0005

| | | | |
|---|---------|-------------------------|--------------|
| REV. DESC: REVISE TO SHOW OPTIONAL COLORS | | | |
| REV. LTR: E | BY: JLP | REVISED: 01/19/99 10:15 | TDR: 0171435 |
| S00000 | | FILE: AAA00005140 | MDL: - |
| | | MTL: - | |

BALDOR ELECTRIC Co.

3PH, DV, 9 LEADS