

# **ABB BALDOR RELIANCE III**

---

## **Customer information packet** BSM63N-375AA

BSM63N-375AA (NEO) T'STAT, RESOLVER

**Specifications**

<b>Enclosure</b>	TENV
<b>Nameplate Speed</b>	4000
<b>Agency Approvals</b>	CE CSA TUV UR
<b>Base Indicator</b>	No Mounting
<b>Dimensional Drawing Numbers</b>	S1LYP100
<b>Frame Material</b>	Exposed Laminations
<b>Motor Lead Quantity/Wire Size</b>	3 @ 18 AWG
<b>Motor Standards</b>	Other
<b>Mounting Arrangement</b>	F1
<b>Nameplate Output</b>	0.64KW
<b>Shaft Rotation</b>	Reversible

**Part Detail**

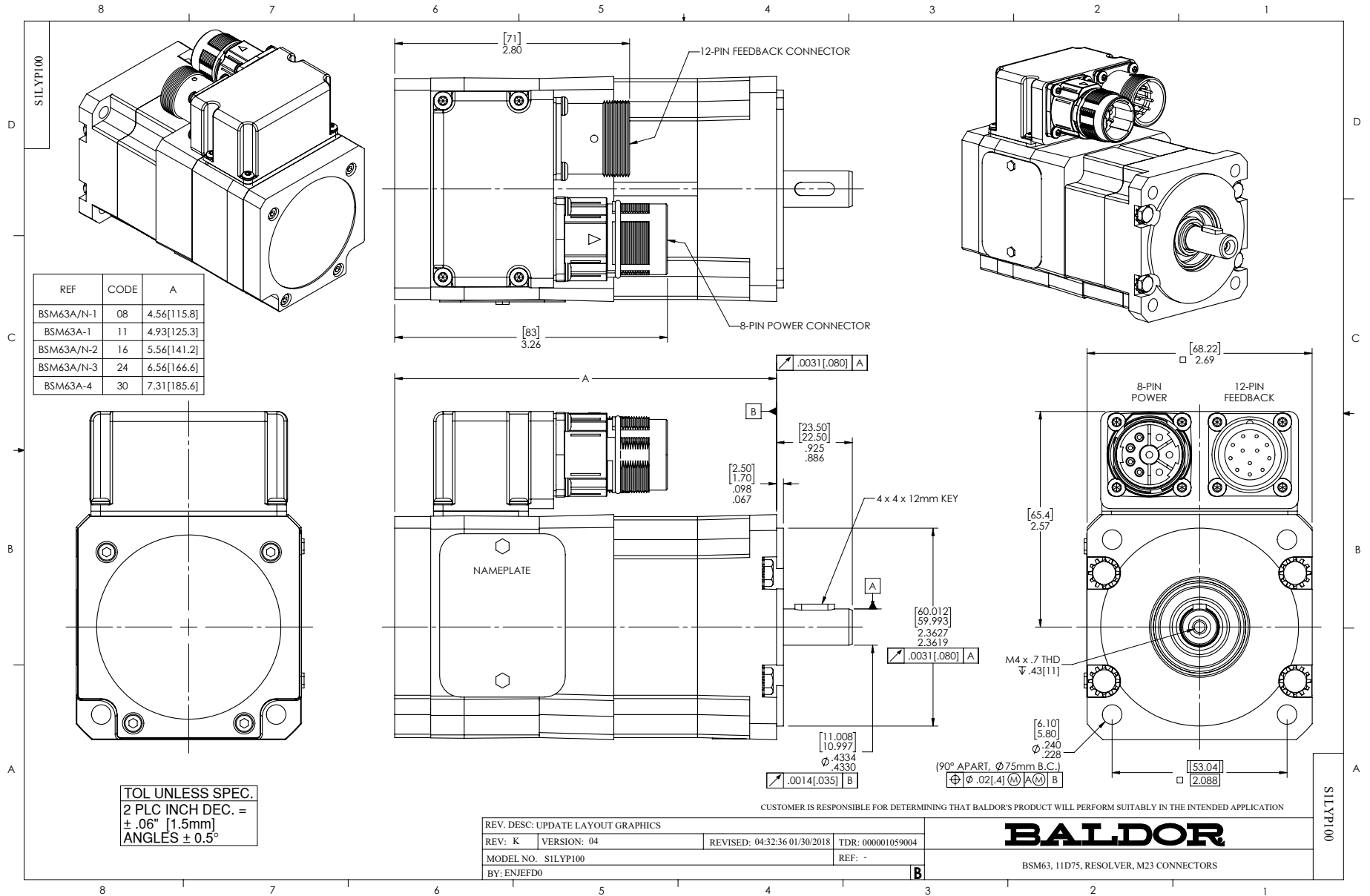
<b>Revision</b>	AH
<b>Type</b>	AC
<b>Mech. spec.</b>	S1P100
<b>Base</b>	
<b>Status</b>	PRD/A
<b>Elec. spec.</b>	S1WGW035
<b>Layout</b>	S1LYP100
<b>Eff. date</b>	07-11-2025
<b>CD Diagram</b>	CD0006A02
<b>Poles</b>	04
<b>Leads</b>	3#18
<b>Proprietary</b>	False
<b>Created date</b>	01-01-0001

**Nameplate**

<b>NP2859L</b>						
<b>CAT.</b>						
<b>SPEC</b>	S1P100W035G1					
<b>MFG</b>						
<b>TORQ CONT STALL</b>	1.91 NM					
<b>CUR CONT STALL/A RMS</b>	2.94					
<b>POWER</b>	0.61KW					
<b>RATED SPEED/RPM(1/MIN)</b>	4000					
<b>RATED BUS VOLTS</b>	320					
<b>PEAK CUR/A RMS</b>	11.8					
<b>MAX SPEED/RPM(1/MIN)</b>	10000		<b>WT.</b>	3.4		
<b>CLASS</b>	F	IP	54	IC	410	<b>25C RATED</b>

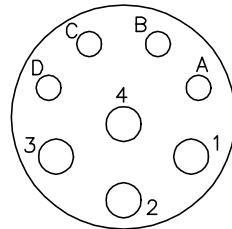
**Accessories**

<b>Part number</b>	<b>Description</b>	<b>Multiplier</b>
GBSM63-MRP070-5	Std. Servo Gearbox Ratio 5:1	E4

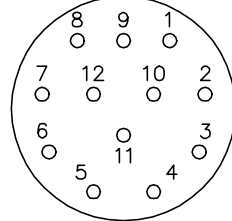


CD1321

8 PIN THREADED CONNECTOR  
(CRIMP STYLE)  
(INSERTION SIDE)



12 PIN THREADED CONNECTOR  
(CRIMP STYLE)  
(INSERTION SIDE)



MOTOR CONNECTIONS

PIN	FUNCTION	INTERNAL/EXTERNAL MARKINGS
A	THERMAL SWITCH	YELLOW
B	THERMAL SWITCH	YELLOW
C	BRAKE (OPTIONAL)	BLACK (* RED)
D	BRAKE (OPTIONAL)	BLACK
1	U	BLACK OR T1
2	GROUND	GREEN OR **GREEN/YELLOW
3	W	BLUE OR T3
4	V	RED OR T2

\* WHEN REQUIRED

\*\*CE MOTORS REQUIRE GREEN/YELLOW GROUND

RESOLVER CONNECTIONS

PIN	FUNCTION	INTERNAL WIRE COLOR
1	REF HI R1	RED/WHITE
2	REF LO R2	YELLOW/WHITE
3	COS+ S1	RED
4	COS- S3	BLACK
5	SINE- S4	BLUE
6	SINE+ S2	YELLOW

CD1321

REV. DESC: ADD CE NOTE AND GREEN/YELLOW GROUND

REV. LTR: F

VERSION: 03

TDR: 000001192301

FILE: \AAA\00055\309

REVISED: 02: 34: 44 06/13/2022

BY: ENDANDO

MTL: -

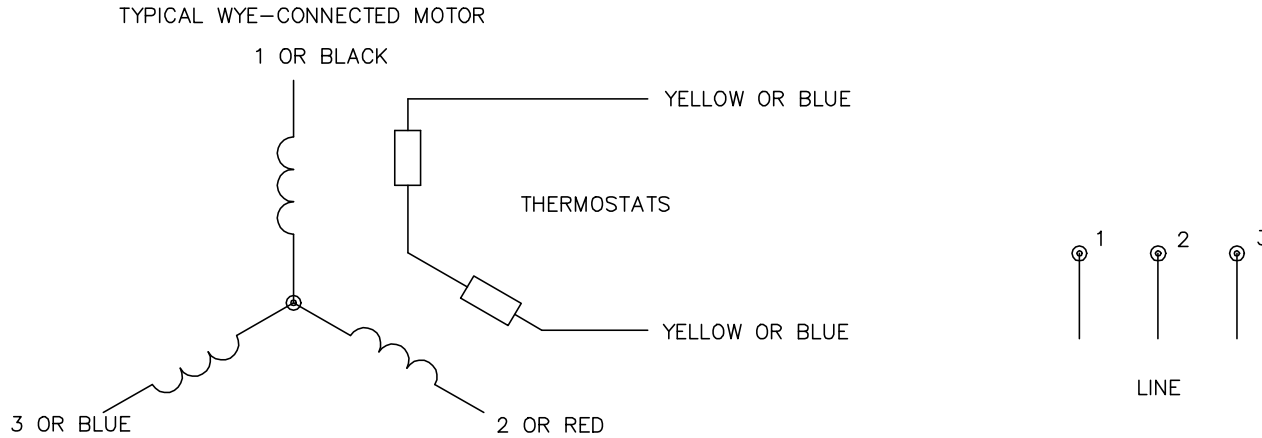


**BALDOR - RELIANCE®**

BSM WIRING DIAG, POWER & RESOLVER, 8 & 12 PIN THD CONNECT.

SH 1 of 1

CD0006A02



**NOTES:**

1. INTERCHANGE ANY TWO LINE LEADS TO REVERSE ROTATION.
2. ACTUAL NUMBER OF INTERNAL PARALLEL CIRCUITS MAY VARY.

REV. DESC: REMOVED "OPTIONAL" FROM PRINT, SERVO REQ'S T'STATS		
REV. LTR: D	VERSION: 03	TDR: 000000414937
CD0006A02	FILE: \AAA\00068\606	REVISED: 10:02:28 11/21/2006
	MTL: -	BY: ENJFDO

**BALDOR ELECTRIC Co.**

3PH, SV, 3 LEADS, WYE CONNECTED

CD0006A02