

**BALDOR • RELIANCE**

---

# Customer information packet

## BSM63N-333AA

BSM63N-333AA (NEO) T'STAT, RESOLVE

**Specifications**

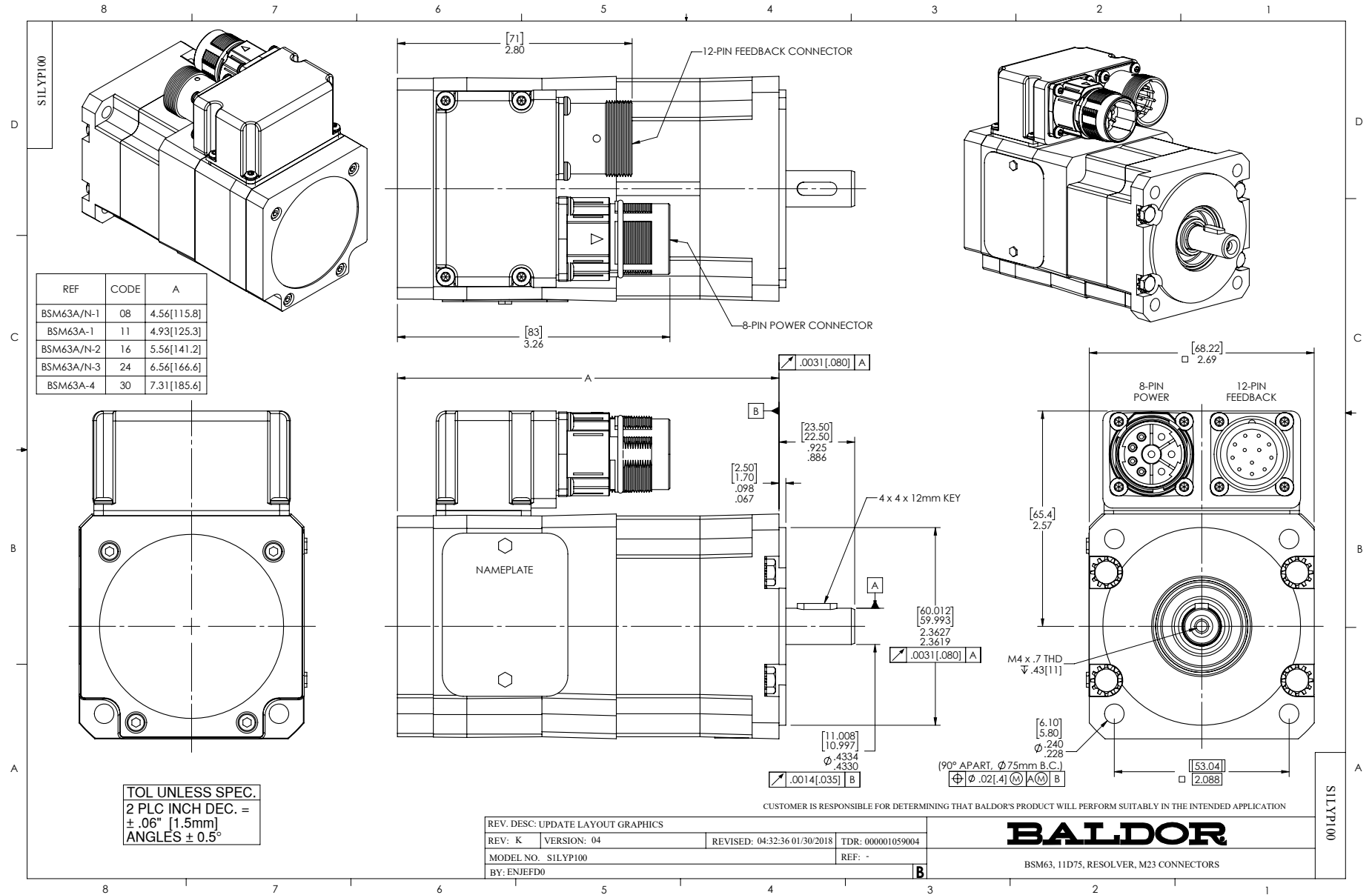
<b>Enclosure</b>	TENV
<b>Nameplate Speed</b>	6000
<b>Agency Approvals</b>	CE CSA TUV UR
<b>Base Indicator</b>	No Mounting
<b>Dimensional Drawing Numbers</b>	S1LYP100
<b>Frame Material</b>	Exposed Laminations
<b>Motor Lead Quantity/Wire Size</b>	3 @ 18 AWG
<b>Motor Standards</b>	Other
<b>Mounting Arrangement</b>	F1
<b>Nameplate Output</b>	0.93KW
<b>Shaft Rotation</b>	Reversible

**Part detail**

<b>Revision</b>	Y
<b>Type</b>	AC
<b>Mech. spec.</b>	S1P100
<b>Base</b>	
<b>Status</b>	PRD/A
<b>Elec. spec.</b>	S1WGW040
<b>Layout</b>	S1LYP100
<b>Eff. date</b>	11-03-2022
<b>CD Diagram</b>	CD0006A02
<b>Poles</b>	04
<b>Leads</b>	3#18
<b>Proprietary</b>	False
<b>Created date</b>	01-01-0001

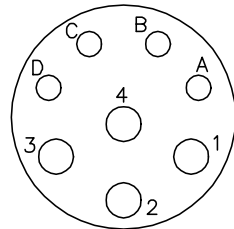
**Nameplate**

<b>NP2859L</b>	
<b>CAT.</b>	BSM63N-333AA
<b>SPEC</b>	S1P100W040G1
<b>MFG</b>	
<b>TORQ CONT STALL</b>	2.09 NM
<b>CUR CONT STALL/A RMS</b>	6.03
<b>POWER</b>	0.93KW
<b>RATED SPEED/RPM(1/MIN)</b>	6000
<b>RATED BUS VOLTS</b>	200
<b>PEAK CUR/A RMS</b>	21.7
<b>MAX SPEED/RPM(1/MIN)</b>	10000
	<b>WT.</b> 3.4
<b>CLASS</b>	F IP 54 IC 410 <b>25C RATED</b>



CD1321

8 PIN THREADED CONNECTOR  
(CRIMP STYLE)  
(INSERTION SIDE)



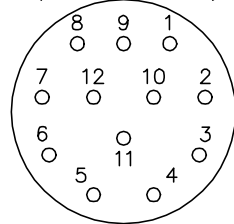
MOTOR CONNECTIONS

PIN	FUNCTION	INTERNAL/EXTERNAL MARKINGS
A	THERMAL SWITCH	YELLOW
B	THERMAL SWITCH	YELLOW
C	BRAKE (OPTIONAL)	BLACK (* RED)
D	BRAKE (OPTIONAL)	BLACK
1	U	BLACK OR T1
2	GROUND	GREEN OR **GREEN/YELLOW
3	W	BLUE OR T3
4	V	RED OR T2

\* WHEN REQUIRED

\*\*CE MOTORS REQUIRE GREEN/YELLOW GROUND

12 PIN THREADED CONNECTOR  
(CRIMP STYLE)  
(INSERTION SIDE)



RESOLVER CONNECTIONS

PIN	FUNCTION	INTERNAL WIRE COLOR
1	REF HI R1	RED/WHITE
2	REF LO R2	YELLOW/WHITE
3	COS+ S1	RED
4	COS- S3	BLACK
5	SINE- S4	BLUE
6	SINE+ S2	YELLOW

CD1321

REV. DESC: ADD CE NOTE AND GREEN/YELLOW GROUND

REV. LTR: F

VERSION: 03

TDR: 000001192301

FILE: \AAA\00055\309

REVISED: 02:34:44 06/13/2022

BY: ENDANDO

MTL: -

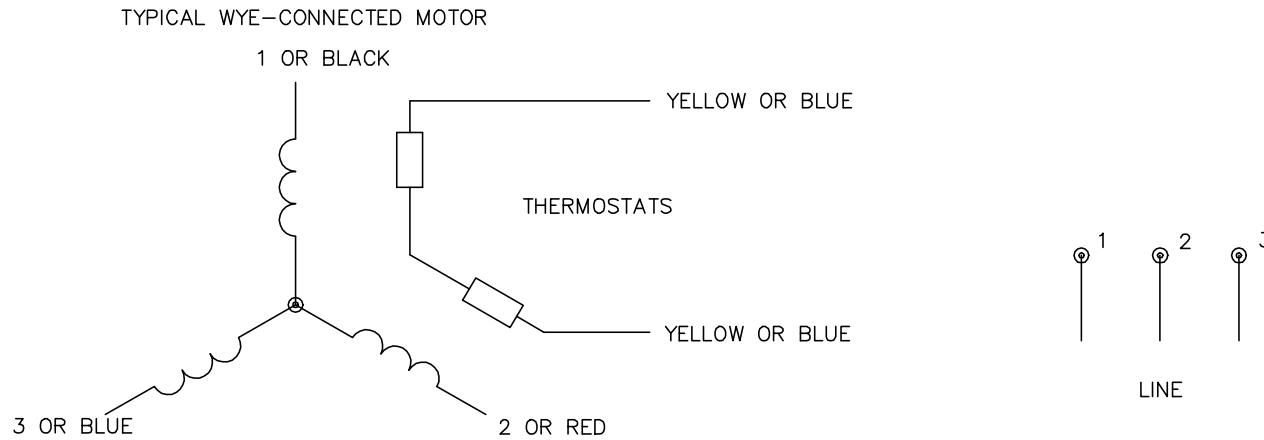


**BALDOR - RELIANCE®**

BSM WIRING DIAG, POWER & RESOLVER, 8 & 12 PIN THD CONNECT.

SH 1 of 1

CD0006A02



NOTES:

1. INTERCHANGE ANY TWO LINE LEADS TO REVERSE ROTATION.
2. ACTUAL NUMBER OF INTERNAL PARALLEL CIRCUITS MAY VARY.

REV. DESC: REMOVED "OPTIONAL" FROM PRINT, SERVO REQ'S T'STATS		
REV. LTR: D	VERSION: 03	TDR: 000000414937
20V90000C CD0006A02	FILE: \AAA\00068\606	REVISED: 10:02:28 11/21/2006
	MTL: -	BY: ENJFDO

**BALDOR ELECTRIC Co.**

3PH, SV, 3 LEADS, WYE CONNECTED

CD0006A02