

BALDOR® • RELIANCE®

Customer information packet

BSM63N-275BA

BSM63N-275BA

Specifications

Enclosure	TENV
Nameplate Speed	4000
Agency Approvals	CE CSA TUV UR
Base Indicator	Bracket Mounted
Dimensional Drawing Numbers	S1LYP106
Frame	D75D
Frame Material	Exposed Laminations
Motor Lead Quantity/Wire Size	3 @ 18 AWG
Motor Standards	IEC
Mounting Arrangement	F1
Nameplate Output	0.53KW
Shaft Rotation	Reversible

Part detail

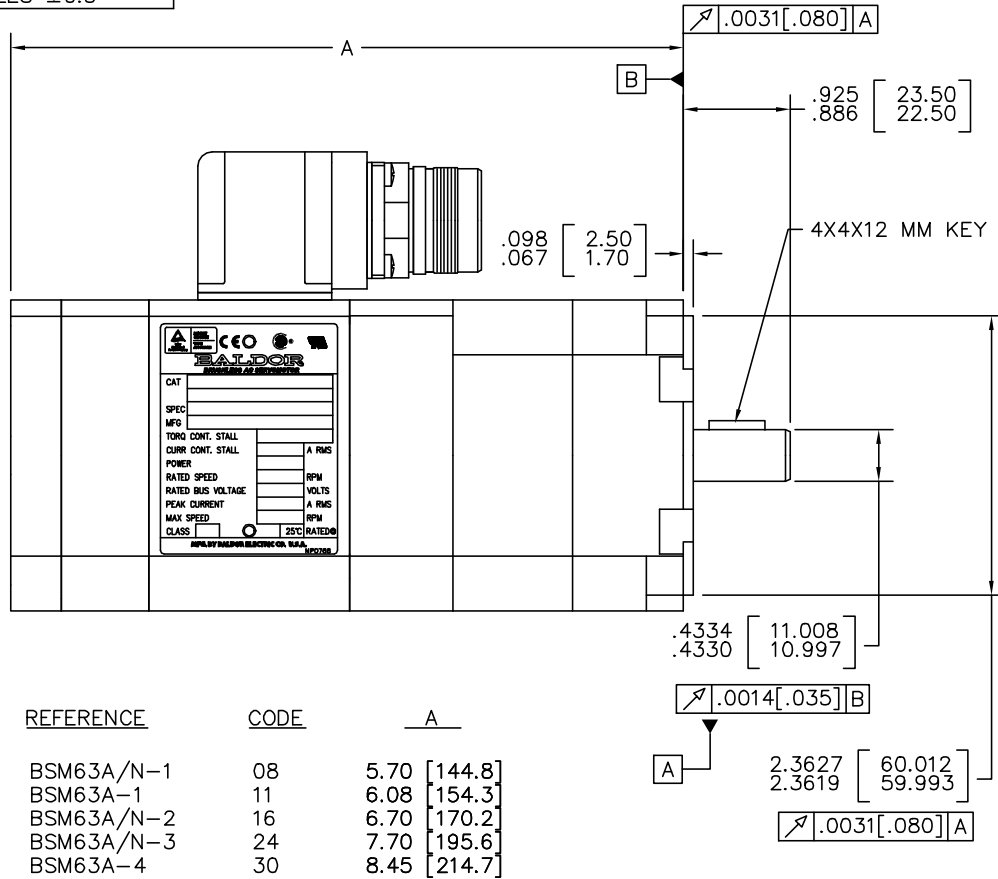
Revision	AA
Type	AC
Mech. spec.	S1P106
Base	
Status	PRD/A
Elec. spec.	S1WGW034
Layout	S1LYP106
Eff. date	07-11-2025
CD Diagram	CD0006A02
Poles	04
Leads	3#18
Proprietary	False
Created date	01-01-0001

Nameplate

NP2859L	
CAT.	
SPEC	S1P106W034G1
MFG	
TORQ CONT STALL	1.34 NM
CUR CONT STALL/A RMS	1.89
POWER	0.47KW
RATED SPEED/RPM(1/MIN)	4000
RATED BUS VOLTS	320
PEAK CUR/A RMS	7.56
MAX SPEED/RPM(1/MIN)	10000
WT.	3
CLASS	F IP 54 IC 410 25C RATED

S1LYP106

TOL UNLESS SPEC.
 2 PLC INCH DEC. =
 ±.06" [1.5mm]
 ANGLES ±0.5°



REFERENCE	CODE	A
BSM63A/N-1	08	5.70 [144.8]
BSM63A-1	11	6.08 [154.3]
BSM63A/N-2	16	6.70 [170.2]
BSM63A/N-3	24	7.70 [195.6]
BSM63A-4	30	8.45 [214.7]

ϕ.240 [ϕ6.10]
 ϕ.228 [ϕ5.80]
 (90° APART 75MM B.C.)
 Ⓢ Ⓞ.02 [.4] Ⓜ Ⓜ Ⓜ Ⓜ

CUSTOMER IS RESPONSIBLE FOR DETERMINING THAT BALDOR'S PRODUCT WILL PERFORM SUITABLY IN THE INTENDED APPLICATION.

REV. DESC: UPDATE TO CORRECT SHAFT		
REV. LTR: F	VERSION: 02	TDR: 000000463715
FILE: \AAA\00073\555	REVISED: 09:01:48 05/08/2008	
MTL: -	BY: ENFRANO	

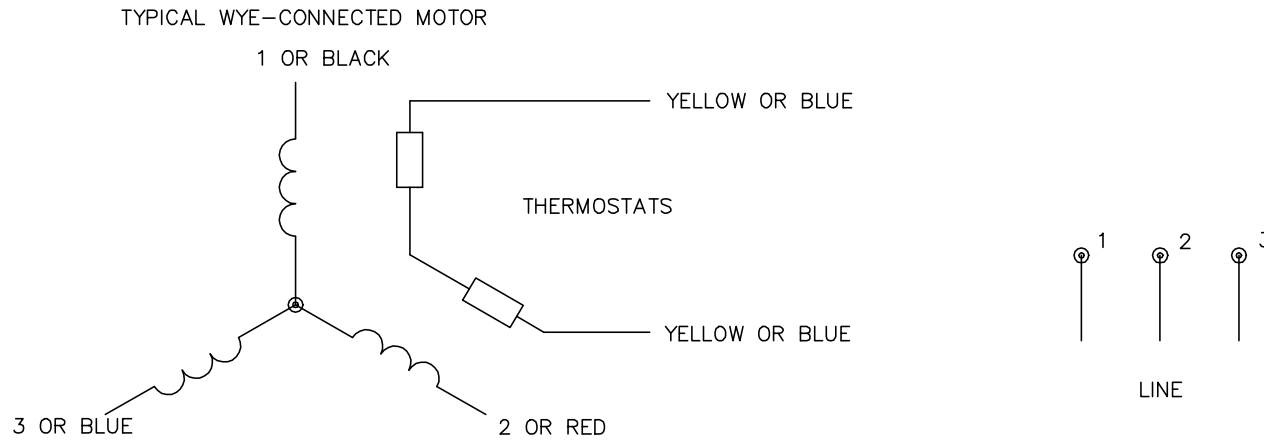
BALDOR • DODGE • RELIANCE

BSM63, 11D75, BRAKE, RESOLVER, METRIC CONNECTORS

SH 1 of 1

S1LYP106

CD0006A02



NOTES:

1. INTERCHANGE ANY TWO LINE LEADS TO REVERSE ROTATION.
2. ACTUAL NUMBER OF INTERNAL PARALLEL CIRCUITS MAY VARY.

REV. DESC: REMOVED "OPTIONAL" FROM PRINT, SERVO REQ'S T'STATS		
REV. LTR: D	VERSION: 03	TDR: 000000414937
CD0006A02	FILE: \AAA\00068\606	REVISED: 10:02:28 11/21/2006
	MTL: -	BY: ENJEFO

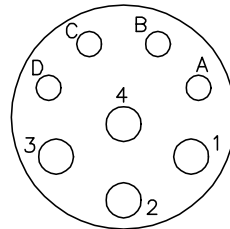
BALDOR ELECTRIC Co.

3PH, SV, 3 LEADS, WYE CONNECTED

CD0006A02

CD1321

8 PIN THREADED CONNECTOR
(CRIMP STYLE)
(INSERTION SIDE)



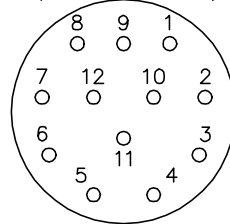
MOTOR CONNECTIONS

PIN	FUNCTION	INTERNAL/EXTERNAL MARKINGS
A	THERMAL SWITCH	YELLOW
B	THERMAL SWITCH	YELLOW
C	BRAKE (OPTIONAL)	BLACK (* RED)
D	BRAKE (OPTIONAL)	BLACK
1	U	BLACK OR T1
2	GROUND	GREEN OR **GREEN/YELLOW
3	W	BLUE OR T3
4	V	RED OR T2

* WHEN REQUIRED

**CE MOTORS REQUIRE GREEN/YELLOW GROUND

12 PIN THREADED CONNECTOR
(CRIMP STYLE)
(INSERTION SIDE)



RESOLVER CONNECTIONS

PIN	FUNCTION	INTERNAL WIRE COLOR
1	REF HI R1	RED/WHITE
2	REF LO R2	YELLOW/WHITE
3	COS+ S1	RED
4	COS- S3	BLACK
5	SINE- S4	BLUE
6	SINE+ S2	YELLOW

CD1321

REV. DESC: ADD CE NOTE AND GREEN/YELLOW GROUND		
REV. LTR: F	VERSION: 03	TDR: 000001192301
FILE: \AAA\00055\309	REVISED: 02:34:44 06/13/2022	BY: ENDANDO
MTL: -	☉ □	

BALDOR - RELIANCE®

BSM WIRING DIAG, POWER & RESOLVER, 8 & 12 PIN THD CONNECT.

SH 1 of 1