

BALDOR • RELIANCE

Customer information packet

BSM63N-250AA

BSM63N-250AA (NEO) T'STAT, RESOLVE

Specifications

Enclosure	TENV
Nameplate Speed	4000
Agency Approvals	CE CSA TUV UR
Base Indicator	No Mounting
Dimensional Drawing Numbers	S1LYP100
Frame Material	Exposed Laminations
Motor Lead Quantity/Wire Size	3 @ 18 AWG
Motor Standards	Other
Mounting Arrangement	F1
Nameplate Output	0.53KW
Shaft Rotation	Reversible

Part detail

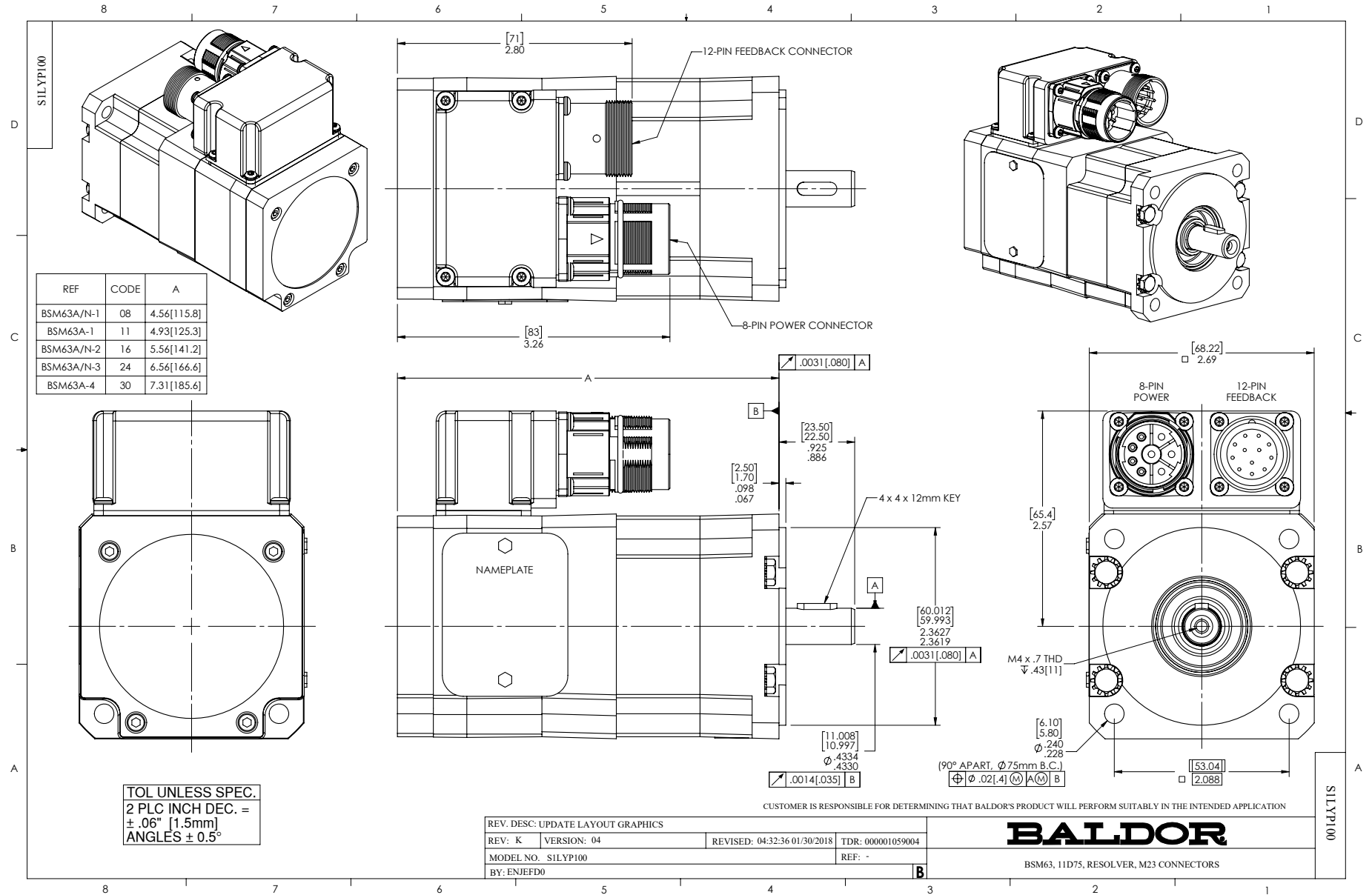
Revision	AC
Type	AC
Mech. spec.	S1P100
Base	
Status	PRD/A
Elec. spec.	S1WGW039
Layout	S1LYP100
Eff. date	06-03-2024
CD Diagram	CD0006A02
Poles	04
Leads	3#18
Proprietary	False
Created date	01-01-0001

Nameplate

NP2859L							
CAT.	BSM63N-250AA						
SPEC	S1P100W039G1						
MFG							
TORQ CONT STALL	1.47 NM						
CUR CONT STALL/A RMS	2.82						
POWER	0.69KW						
RATED SPEED/RPM(1/MIN)	6000						
RATED BUS VOLTS	320						
PEAK CUR/A RMS	11.3						
MAX SPEED/RPM(1/MIN)	10000					WT.	3
CLASS	F	IP	54	IC	410	25C RATED	

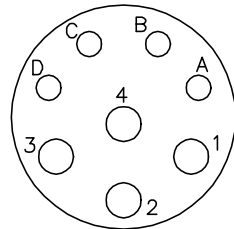
Accessories

Part number	Description	Multiplier
GBSM63-MRP070-5	Std. Servo Gearbox Ratio 5:1	E4
GBSM63-MRP070-10	Std. Servo Gearbox Ratio 10:1	E4
GBSM63-MRP090-25	Std. Servo Gearbox Ratio 25:1	E4



CD1321

8 PIN THREADED CONNECTOR
(CRIMP STYLE)
(INSERTION SIDE)



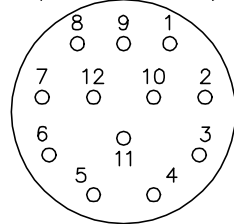
MOTOR CONNECTIONS

PIN	FUNCTION	INTERNAL/EXTERNAL MARKINGS
A	THERMAL SWITCH	YELLOW
B	THERMAL SWITCH	YELLOW
C	BRAKE (OPTIONAL)	BLACK (* RED)
D	BRAKE (OPTIONAL)	BLACK
1	U	BLACK OR T1
2	GROUND	GREEN OR **GREEN/YELLOW
3	W	BLUE OR T3
4	V	RED OR T2

* WHEN REQUIRED

**CE MOTORS REQUIRE GREEN/YELLOW GROUND

12 PIN THREADED CONNECTOR
(CRIMP STYLE)
(INSERTION SIDE)



RESOLVER CONNECTIONS

PIN	FUNCTION	INTERNAL WIRE COLOR
1	REF HI R1	RED/WHITE
2	REF LO R2	YELLOW/WHITE
3	COS+ S1	RED
4	COS- S3	BLACK
5	SINE- S4	BLUE
6	SINE+ S2	YELLOW

CD1321

REV. DESC: ADD CE NOTE AND GREEN/YELLOW GROUND

REV. LTR: F

VERSION: 03

TDR: 000001192301

FILE: \AAA\00055\309

REVISED: 02: 34: 44 06/13/2022

BY: ENDANDO

MTL: -

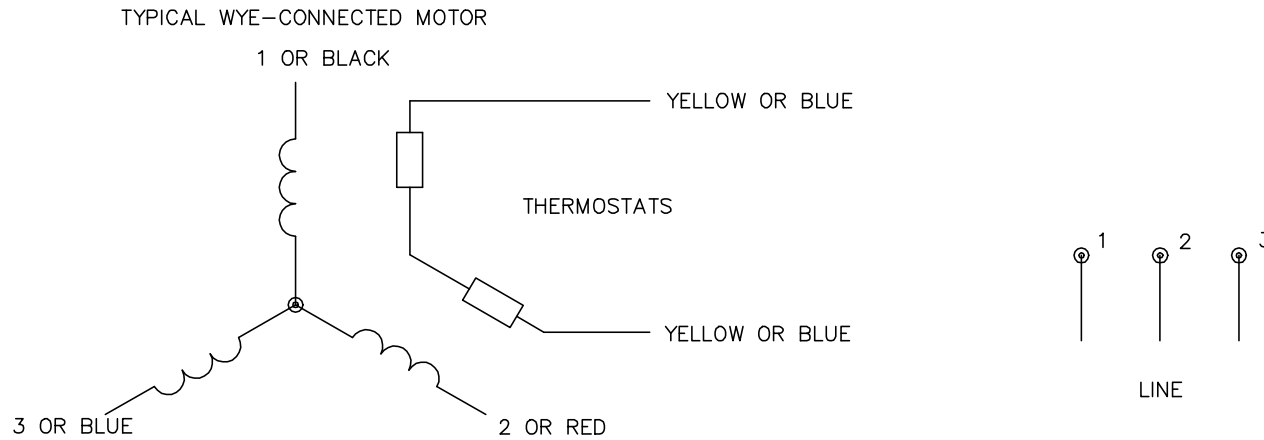


BALDOR - RELIANCE®

BSM WIRING DIAG, POWER & RESOLVER, 8 & 12 PIN THD CONNECT.

SH 1 of 1

CD0006A02



NOTES:

1. INTERCHANGE ANY TWO LINE LEADS TO REVERSE ROTATION.
2. ACTUAL NUMBER OF INTERNAL PARALLEL CIRCUITS MAY VARY.

REV. DESC: REMOVED "OPTIONAL" FROM PRINT, SERVO REQ'S T'STATS		
REV. LTR: D	VERSION: 03	TDR: 000000414937
CD0006A02	FILE: \AAA\00068\606	REVISED: 10:02:28 11/21/2006
	MTL: -	BY: ENJFDO

BALDOR ELECTRIC Co.

3PH, SV, 3 LEADS, WYE CONNECTED

CD0006A02