

BALDOR • RELIANCE

Customer information packet

BSM63N-233AA

BSM63N-233AA (NEO) T'STAT, RESOLVE

Specifications

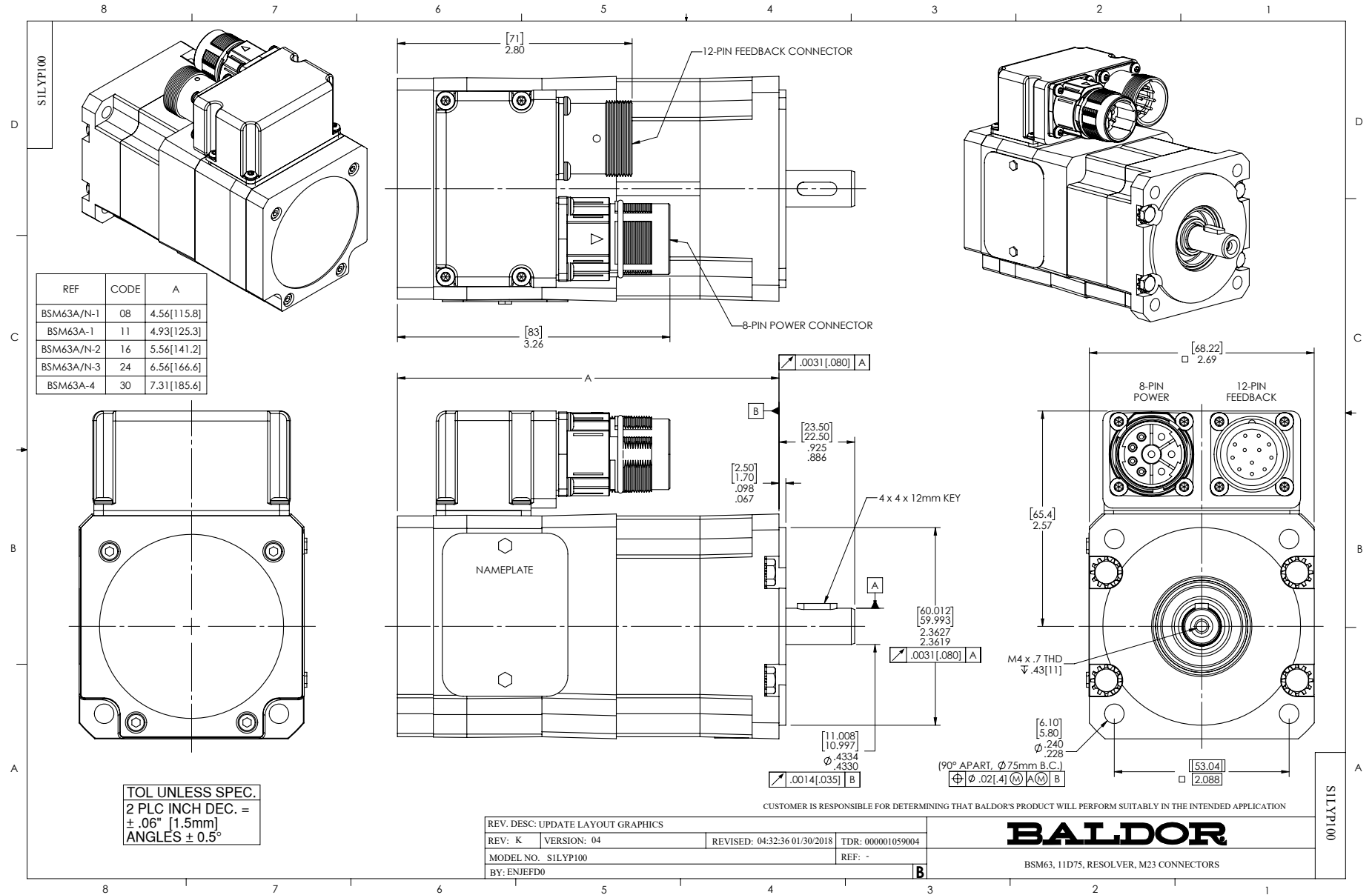
Enclosure	TENV
Nameplate Speed	6000
Agency Approvals	CE CSA TUV UR
Base Indicator	No Mounting
Dimensional Drawing Numbers	S1LYP100
Frame Material	Exposed Laminations
Motor Lead Quantity/Wire Size	3 @ 18 AWG
Motor Standards	Other
Mounting Arrangement	F1
Nameplate Output	0.69KW
Shaft Rotation	Reversible

Part detail

Revision	AB
Type	AC
Mech. spec.	S1P100
Base	
Status	PRD/A
Elec. spec.	S1WGW038
Layout	S1LYP100
Eff. date	06-03-2024
CD Diagram	CD0006A02
Poles	04
Leads	3#18
Proprietary	False
Created date	01-01-0001

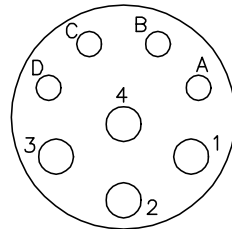
Nameplate

NP2859L	
CAT.	BSM63N-233AA
SPEC	S1P100W038G1
MFG	
TORQ CONT STALL	1.47 NM
CUR CONT STALL/A RMS	3.93
POWER	0.53KW
RATED SPEED/RPM(1/MIN)	4000
RATED BUS VOLTS	160
PEAK CUR/A RMS	15.7
MAX SPEED/RPM(1/MIN)	10000
CLASS	F IP 54 IC 410
WT.	3
	25C RATED



CD1321

8 PIN THREADED CONNECTOR
(CRIMP STYLE)
(INSERTION SIDE)



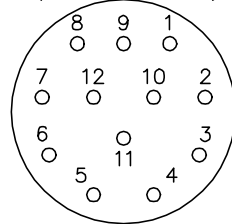
MOTOR CONNECTIONS

PIN	FUNCTION	INTERNAL/EXTERNAL MARKINGS
A	THERMAL SWITCH	YELLOW
B	THERMAL SWITCH	YELLOW
C	BRAKE (OPTIONAL)	BLACK (* RED)
D	BRAKE (OPTIONAL)	BLACK
1	U	BLACK OR T1
2	GROUND	GREEN OR **GREEN/YELLOW
3	W	BLUE OR T3
4	V	RED OR T2

* WHEN REQUIRED

**CE MOTORS REQUIRE GREEN/YELLOW GROUND

12 PIN THREADED CONNECTOR
(CRIMP STYLE)
(INSERTION SIDE)



RESOLVER CONNECTIONS

PIN	FUNCTION	INTERNAL WIRE COLOR
1	REF HI R1	RED/WHITE
2	REF LO R2	YELLOW/WHITE
3	COS+ S1	RED
4	COS- S3	BLACK
5	SINE- S4	BLUE
6	SINE+ S2	YELLOW

CD1321

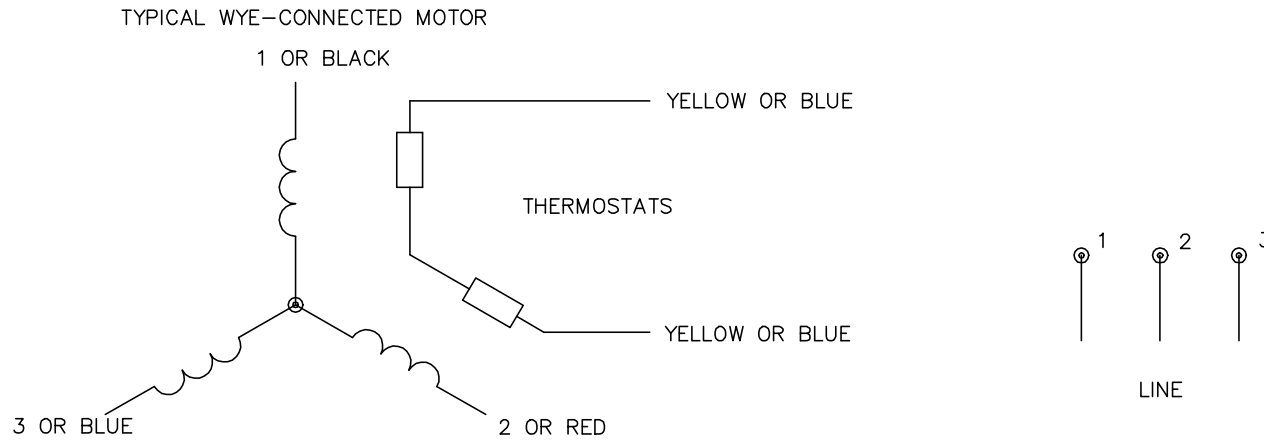
REV. DESC: ADD CE NOTE AND GREEN/YELLOW GROUND		
REV. LTR: F	VERSION: 03	TDR: 000001192301
FILE: \AAA\00055\309	REVISED: 02: 34: 44 06/13/2022	BY: ENDANDO
MTL: -	© □	

BALDOR - RELIANCE®

BSM WIRING DIAG, POWER & RESOLVER, 8 & 12 PIN THD CONNECT.

SH 1 of 1

CD0006A02



NOTES:

1. INTERCHANGE ANY TWO LINE LEADS TO REVERSE ROTATION.
2. ACTUAL NUMBER OF INTERNAL PARALLEL CIRCUITS MAY VARY.

REV. DESC: REMOVED "OPTIONAL" FROM PRINT, SERVO REQ'S T'STATS		
REV. LTR: D	VERSION: 03	TDR: 000000414937
20V90000	FILE: \AAA\00068\606	REVISED: 10:02:28 11/21/2006
	MTL: -	BY: ENJFDO

BALDOR ELECTRIC Co.

3PH, SV, 3 LEADS, WYE CONNECTED

CD0006A02