

ABB BALDOR RELIANCE III



Customer information packet

BSM50N-275AA

BSM50N-275AA (NEO) T'STAT, RESOLVER

Specifications

Enclosure	TENV
Nameplate Speed	2000
Agency Approvals	CE CSA TUV UR WEEE
Base Indicator	Bracket Mounted
Dimensional Drawing Numbers	S5LYP037
Frame Material	Exposed Laminations
Motor Lead Quantity/Wire Size	3 @ 18 AWG
Motor Standards	Other
Mounting Arrangement	F1
Nameplate Output	0.18KW
Shaft Rotation	Reversible

Part Detail

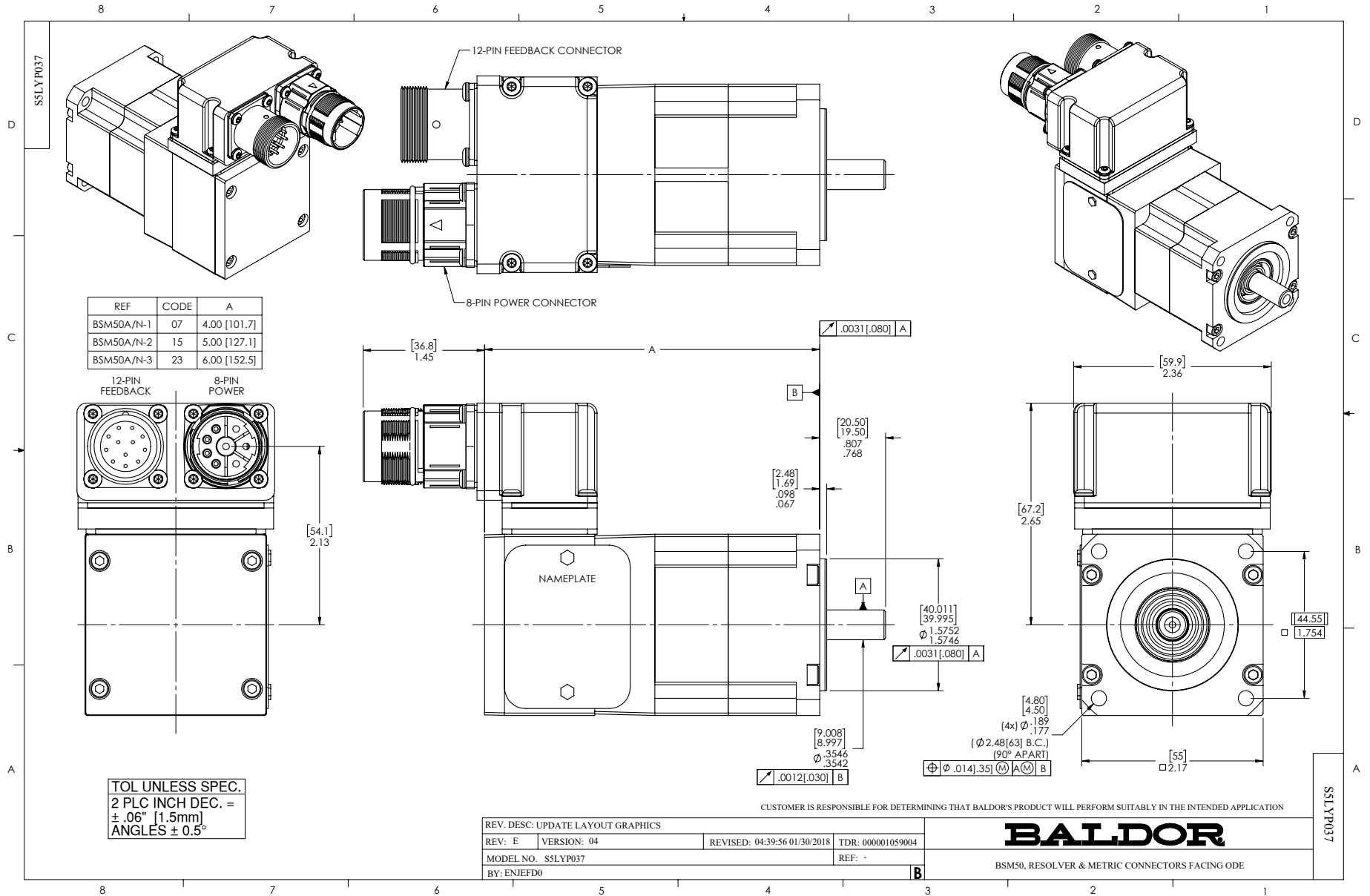
Revision	AJ
Type	AC
Mech. spec.	S5P037
Base	
Status	PRD/A
Elec. spec.	S5WGW020
Layout	S5LYP037
Eff. date	06-11-2025
CD Diagram	CD0006A02
Poles	04
Leads	3#18
Proprietary	False
Created date	01-01-0001

Nameplate

NP2859L						
CAT.	BSM50N-275AA					
SPEC	S5P037W020					
MFG						
TORQ CONT STALL	0.98 NM					
CUR CONT STALL/A RMS	1.52					
POWER	0.36KW					
RATED SPEED/RPM(1/MIN)	4000					
RATED BUS VOLTS	320					
PEAK CUR/A RMS	6.08					
MAX SPEED/RPM(1/MIN)	10000		WT.	2.3		
CLASS	F	IP	54	IC	410	25C RATED

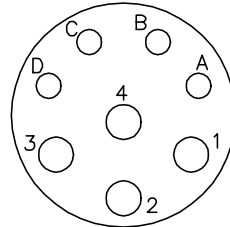
Accessories

Part number	Description	Multiplier
GBSM50-MRP050-5	Std. Servo Gearbox Ratio 5:1	E4

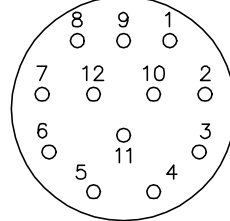


CD1321

8 PIN THREADED CONNECTOR
(CRIMP STYLE)
(INSERTION SIDE)



12 PIN THREADED CONNECTOR
(CRIMP STYLE)
(INSERTION SIDE)



MOTOR CONNECTIONS

PIN	FUNCTION	INTERNAL/EXTERNAL MARKINGS
A	THERMAL SWITCH	YELLOW
B	THERMAL SWITCH	YELLOW
C	BRAKE (OPTIONAL)	BLACK (* RED)
D	BRAKE (OPTIONAL)	BLACK
1	U	BLACK OR T1
2	GROUND	GREEN OR **GREEN/YELLOW
3	W	BLUE OR T3
4	V	RED OR T2

* WHEN REQUIRED

**CE MOTORS REQUIRE GREEN/YELLOW GROUND

RESOLVER CONNECTIONS

PIN	FUNCTION	INTERNAL WIRE COLOR
1	REF HI R1	RED/WHITE
2	REF LO R2	YELLOW/WHITE
3	COS+ S1	RED
4	COS- S3	BLACK
5	SINE- S4	BLUE
6	SINE+ S2	YELLOW

CD1321

REV. DESC: ADD CE NOTE AND GREEN/YELLOW GROUND

REV. LTR: F

VERSION: 03

TDR: 000001192301

FILE: \AAA\00055\309

REVISED: 02: 34: 44 06/13/2022

BY: ENDANDO

MTL: -



BALDOR - RELIANCE®

BSM WIRING DIAG, POWER & RESOLVER, 8 & 12 PIN THD CONNECT.

SH 1 of 1

CD0006A02



NOTES:

1. INTERCHANGE ANY TWO LINE LEADS TO REVERSE ROTATION.
2. ACTUAL NUMBER OF INTERNAL PARALLEL CIRCUITS MAY VARY.

REV. DESC: REMOVED "OPTIONAL" FROM PRINT, SERVO REQ'S T'STATS		
REV. LTR: D	VERSION: 03	TDR: 000000414937
CD0006A02	FILE: \AAA\00068\606	REVISED: 10:02:28 11/21/2006
	MTL: -	BY: ENJFDO

BALDOR ELECTRIC Co.

3PH, SV, 3 LEADS, WYE CONNECTED

CD0006A02