



Customer information packet

BL3516

.25HP, 1725RPM, 1PH, 60HZ, 56, BRAKE, 3414L

Class - None

Division - Not Applicable

Specifications

Enclosure	TENV
Frame	56
Frame Material	Steel
Frequency	60.00 Hz
Haz Area Class and Group	None
Haz Area Division	Not Applicable
Motor Letter Type	Cap Start, Induction Run
Output @ Frequency	.250 HP @ 60 HZ
Phase	1
Synchronous Speed @ Frequency	1800 RPM @ 60 HZ
Voltage @ Frequency	115.0 V @ 60 HZ 230.0 V @ 60 HZ
Agency Approvals	CSA UR
Ambient Temperature	40 °C
Auxillary Box	No Auxillary Box
Auxillary Box Lead Termination	None
Base Indicator	Rigid
Bearing Grease Type	Polyrex EM (-20F +300F)
Blower	None
Brake Torque	3.0 lb-ft
Current @ Voltage	2.100 A @ 230.0 V 2.200 A @ 208.0 V 4.200 A @ 115.0 V
Design Code	N
Drip Cover	No Drip Cover
Duty Rating	CONT
Efficiency @ 100% Load	59.5 %
Electrically Isolated Bearing	Not Electrically Isolated
Feedback Device	NO FEEDBACK
Front Face Code	Brake Mounting
Front Shaft Indicator	None

Part detail

Revision	AC
Type	AC
Mech. spec.	34K054
Base	
Status	PRD/A
Elec. spec.	34WGW122
Layout	34LYK054
Eff. date	10-28-2024
CD Diagram	CD0001
Poles	04
Leads	6#18
Proprietary	False
Created date	01-01-0001

Heater Indicator	No Heater
High Voltage Full Load Amps	2.1 a
Insulation Class	B
Inverter Code	Not Inverter
KVA Code	K
Lifting Lugs	No Lifting Lugs
Locked Bearing Indicator	No Locked Bearing
Motor Lead Exit	Ko Box
Motor Lead Quantity/Wire Size	6 @ 18 AWG
Motor Lead Termination	Flying Leads
Motor Standards	NEMA
Motor Type	3414L
Mounting Arrangement	F1
Number of Poles	4
Overall Length	14.36 IN
Power Factor	63
Product Family	General Purpose
Pulley End Bearing Type	Ball
Pulley Face Code	Standard
Pulley Shaft Indicator	Standard
Rodent Screen	None
Service Factor	1.00
Shaft Diameter	0.625 IN
Shaft Extension Location	Pulley End
Shaft Ground Indicator	No Shaft Grounding
Shaft Rotation	Reversible
Shaft Slinger Indicator	No Slinger
Speed	1725 rpm
Speed Code	Single Speed
Starting Method	Direct on line
Thermal Device - Bearing	None
Thermal Device - Winding	None
Vibration Sensor Indicator	No Vibration Sensor

Nameplate

NP1256L									
CAT.NO.	BL3516								
SPEC.	34K54W122-B								
HP	.25								
VOLTS	115/230								
AMP	4.2/2.1								
RPM	1725								
FRAME	56		HZ	60		PH	1		
SER.F.	1.00	CODE	K	DES	N	CLASS	B		
NEMA-NOM-EFF	59.5	PF	63						
RATING	40C AMB-CONT								
CC									
DE	6203	ODE	6203						
ENCL	TENV	SN							

AC Induction Motor Performance Data

Record # 6889

Typical performance - not guaranteed values

Winding: 34WGW122-R001		Type: 3414L	Enclosure: TENV	
Nameplate Data			230 V, 60 Hz: High Voltage Connection	
Rated Output (HP)	.25	Full Load Torque	0.76 LB-FT	
Volts	115/230	Start Configuration	direct on line	
Full Load Amps	4.2/2.1	Breakdown Torque	2.1 LB-FT	
R.P.M.	1725	Pull-up Torque	1.5 LB-FT	
Hz	60 Phase	1	Locked-rotor Torque	2.6 LB-FT
NEMA Design Code	N KVA Code	K	Starting Current	9.75 A
Service Factor (S.F.)		1	No-load Current	1.8 A
NEMA Nom. Eff.	59.5 Power Factor	63	Line-line Res. @ 25°C	9.08 Ω A Ph 7.55 Ω B Ph
Rating - Duty	40C AMB-CONT		Temp. Rise @ Rated Load	71°C

Load Characteristics 230 V, 60 Hz, 0.25 HP

% of Rated Load	25	50	75	100	125	150
Power Factor	39	50	59	67	73	78
Efficiency	28.4	43	51.1	55.7	57.9	58.3
Speed	1773	1758	1741	1723	1701	1675
Line amperes	1.8	1.9	2	2.2	2.4	2.7

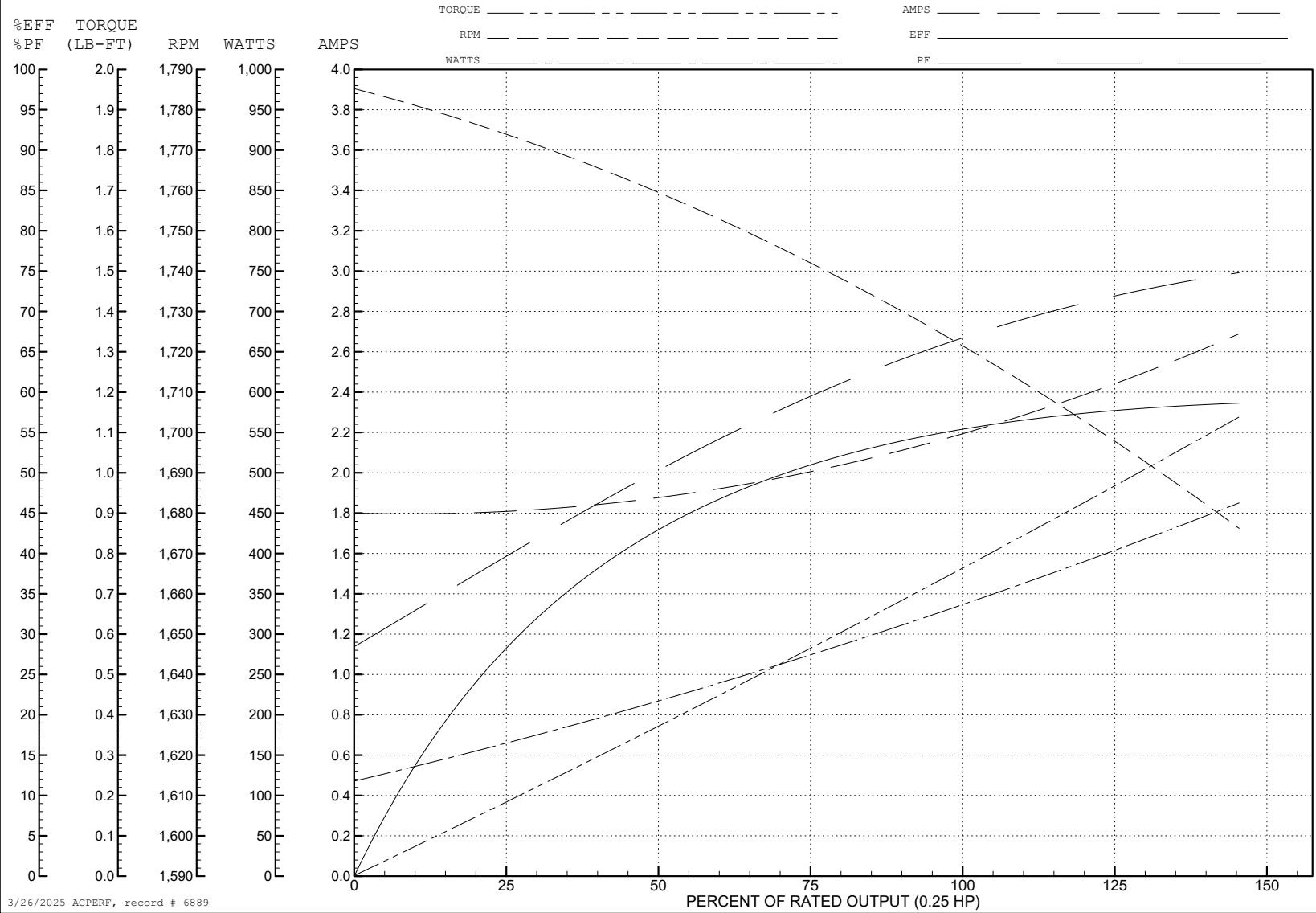
ABB Motors and Mechanical Inc.

WINDING # 34WGW122

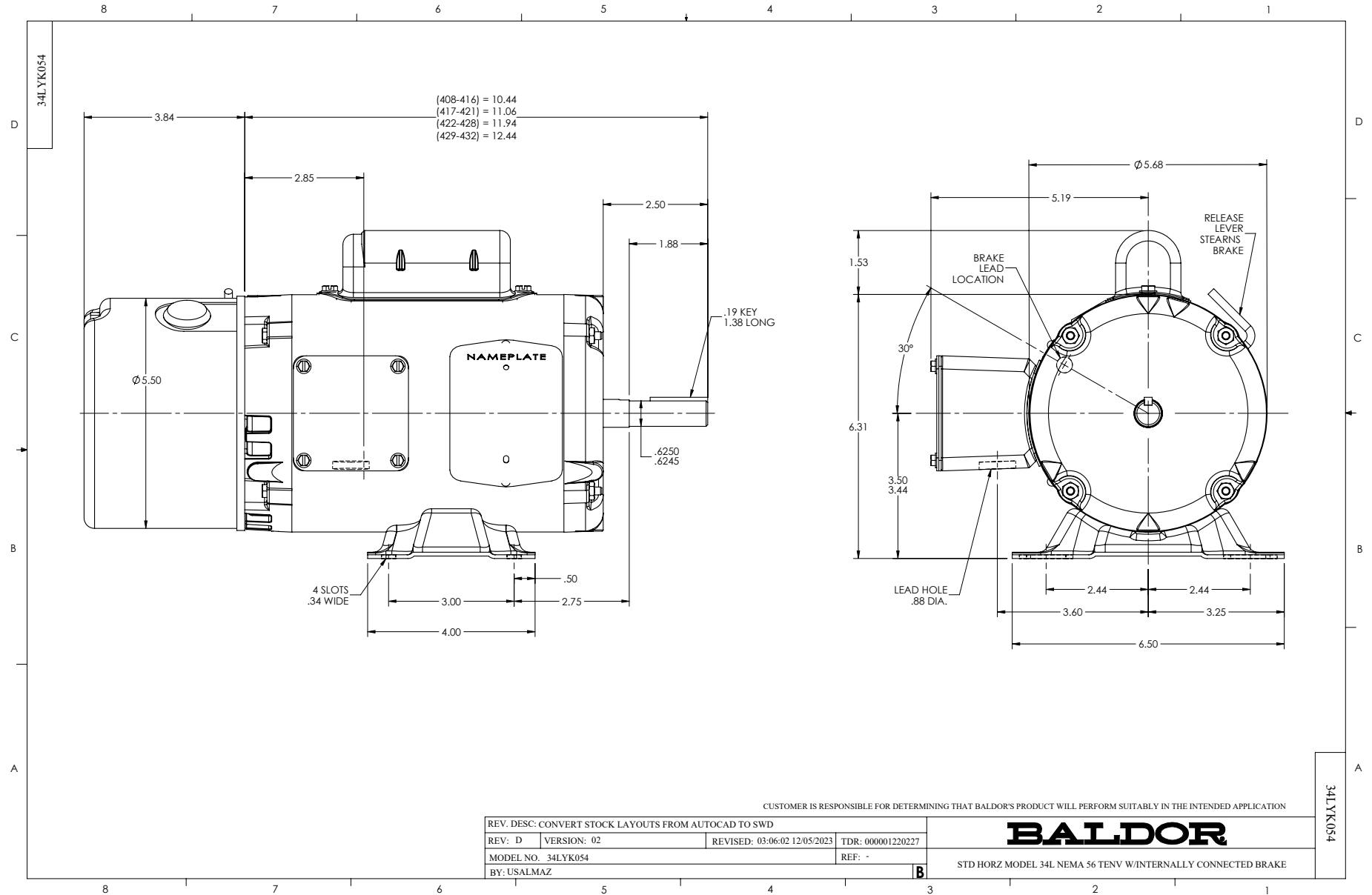
0.25 HP 1 PH 60 HZ 1725 RPM 230 V 3414L

Typical performance - not guaranteed values.

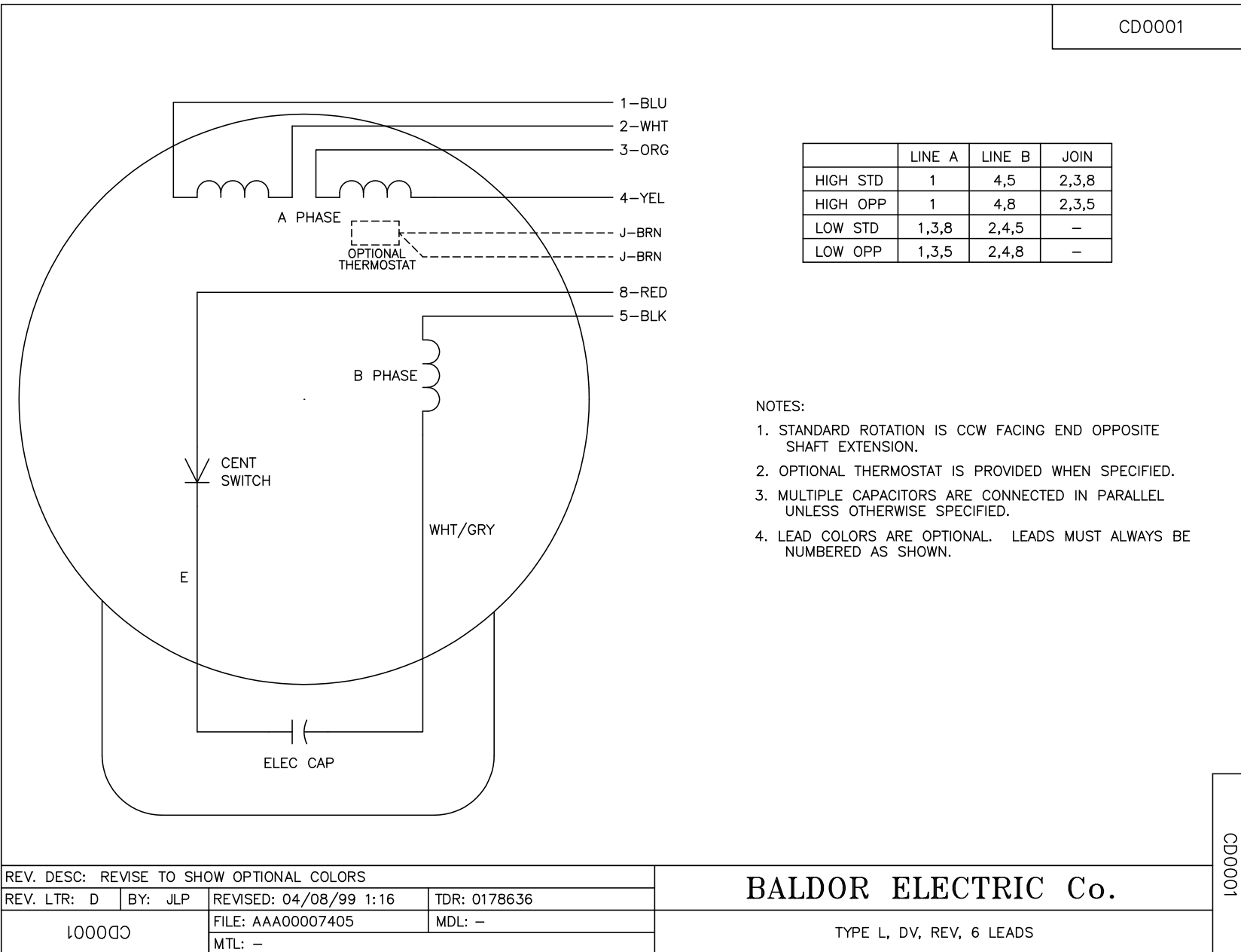
TORQUES (LB-FT): PO=2.1 PU=1.5 LR=2.6 LRA=9.75



3/26/2025 ACPERF, record # 6889



CD0001



	LINE A	LINE B	JOIN
HIGH STD	1	4,5	2,3,8
HIGH OPP	1	4,8	2,3,5
LOW STD	1,3,8	2,4,5	-
LOW OPP	1,3,5	2,4,8	-

NOTES:

1. STANDARD ROTATION IS CCW FACING END OPPOSITE SHAFT EXTENSION.
2. OPTIONAL THERMOSTAT IS PROVIDED WHEN SPECIFIED.
3. MULTIPLE CAPACITORS ARE CONNECTED IN PARALLEL UNLESS OTHERWISE SPECIFIED.
4. LEAD COLORS ARE OPTIONAL. LEADS MUST ALWAYS BE NUMBERED AS SHOWN.

CD0001

REV. DESC: REVISE TO SHOW OPTIONAL COLORS			
REV. LTR: D	BY: JLP	REVISED: 04/08/99 1:16	TDR: 0178636
100000		FILE: AAA00007405	MDL: -
		MTL: -	

BALDOR ELECTRIC Co.

TYPE L, DV, REV, 6 LEADS