

ABB BALDOR RELIANCE III

Customer information packet

AOM3710T

7.5HP, 1750RPM, 3PH, 60HZ, 213T, 3728M, TEAO, F

Class - None

Division - Not Applicable

Specifications

Enclosure	TEAO
Frame	213T
Frame Material	Steel
Frequency	60.00 Hz
Haz Area Class and Group	None
Haz Area Division	Not Applicable
Motor Letter Type	Three Phase
Output @ Frequency	7.500 HP @ 60 HZ
Phase	3
Synchronous Speed @ Frequency	1800 RPM @ 60 HZ
Voltage @ Frequency	208.0 V @ 60 HZ 230.0 V @ 60 HZ 460.0 V @ 60 HZ
Agency Approvals	CSA UR
Ambient Temperature	40 °C
Auxiliary Box	NO AUXILLARY BOX
Auxiliary Box Lead Termination	None
Base Indicator	Rigid
Bearing Grease Type	Polyrex EM (-20F +300F)
Blower	None
Current @ Voltage	21.600 A @ 230.0 V 21.600 A @ 208.0 V 10.800 A @ 460.0 V
Design Code	A
Drip Cover	No Drip Cover
Duty Rating	CONT
Efficiency @ 100% Load	87.5 %
Electrically Isolated Bearing	Not Electrically Isolated
Feedback Device	NO FEEDBACK
Front Shaft Indicator	None
Heater Indicator	No Heater

Part Detail

Revision	C
Type	AC
Mech. spec.	37F359
Base	
Status	PRD/A
Elec. spec.	37WGL952
Layout	37LYF359
Eff. date	10-09-2025
CD Diagram	CD0005
Poles	04
Leads	9#14
Proprietary	False
Created date	03-21-2023

High Voltage Full Load Amps	10.8 a
Insulation Class	F
Inverter Code	Not Inverter
KVA Code	J
Lifting Lugs	Standard Lifting Lugs
Locked Bearing Indicator	Locked Bearing
Motor Lead Quantity/Wire Size	9 @ 14 AWG
Motor Lead Termination	Flying Leads
Motor Standards	NEMA
Motor Type	3728M
Mounting Arrangement	F1
Number of Poles	4
Overall Length	16.32 IN
Power Factor	74
Product Family	General Purpose
Pulley End Bearing Type	Ball
Pulley Face Code	Standard
Pulley Shaft Indicator	Standard
Rodent Screen	None
Service Factor	1.15
Shaft Diameter	1.375 IN
Shaft Ground Indicator	No Shaft Grounding
Shaft Rotation	Reversible
Shaft Slinger Indicator	No Slinger
Speed	1750 rpm
Speed Code	Single Speed
Starting Method	Direct on line
Thermal Device - Bearing	None
Thermal Device - Winding	None
Vibration Sensor Indicator	No Vibration Sensor
Winding Thermal 1	None
Winding Thermal 2	None

Nameplate

NP1256L									
CAT.NO.	AOM3710T								
SPEC.	37F359L952G1								
HP	7.5								
VOLTS	208-230/460								
AMP	21.6/10.8								
RPM	1750								
FRAME	213T		HZ	60			PH	3	
SER.F.	1.15	CODE	J	DES	A	CLASS	F		
NEMA-NOM-EFF	87.5	PF	74						
RATING	40C AMB-CONT								
CC									
DE	6307		ODE	6206					
ENCL	TEAO	SN							
	1700 FPM AT 170CFM								

Accessories

Part number	Description	Multiplier
37-3301	C FACE KIT	P1

ABB Motors and Mechanical Inc.

WINDING # 37WGL952

Typical performance - not guaranteed values.

7.5 HP 3 PH 60 HZ 1750 RPM 460 V 3728M

TORQUES (LB-FT): PO=59.8 PU=36.1 LR=41.7 LRA=64.4

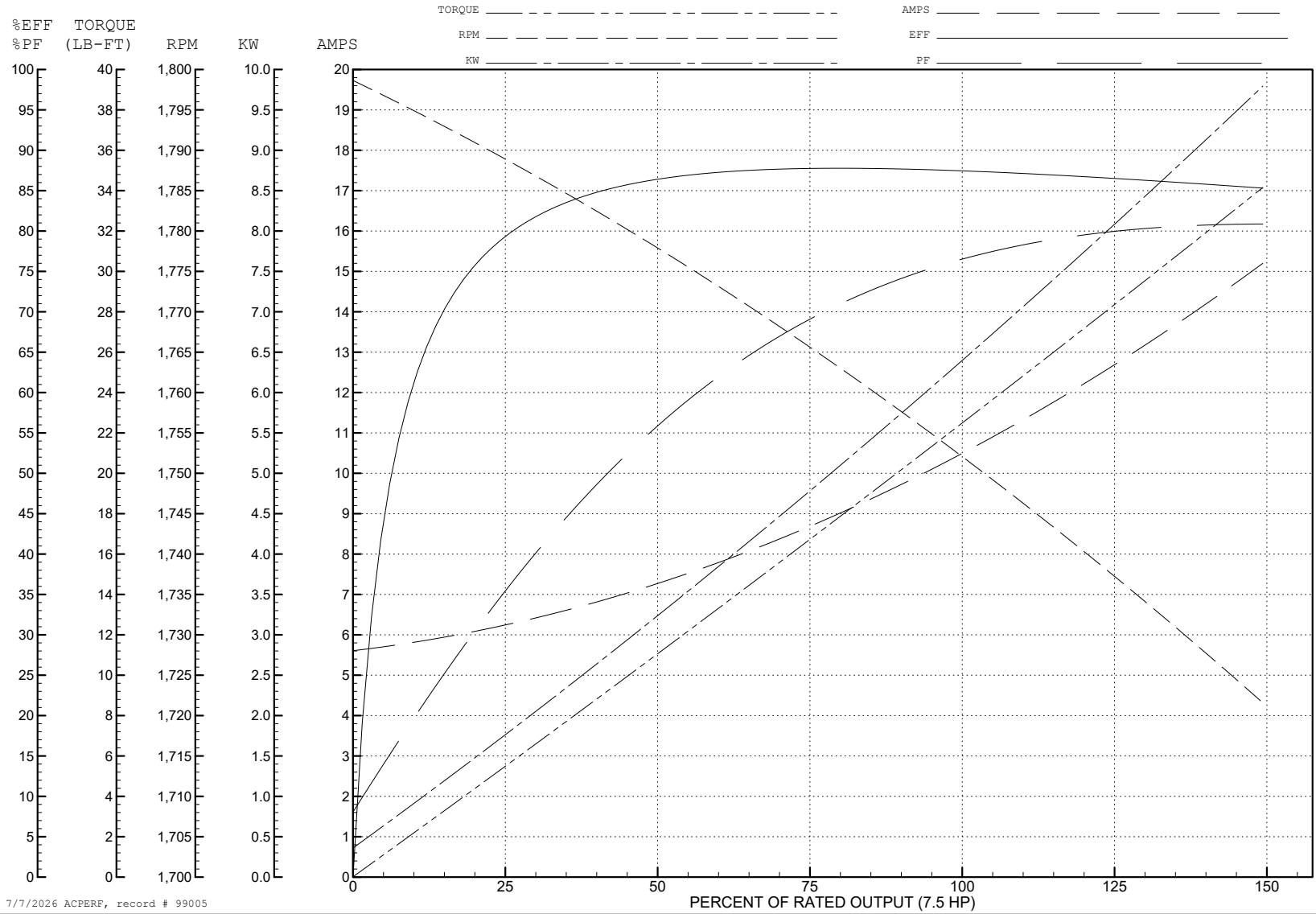


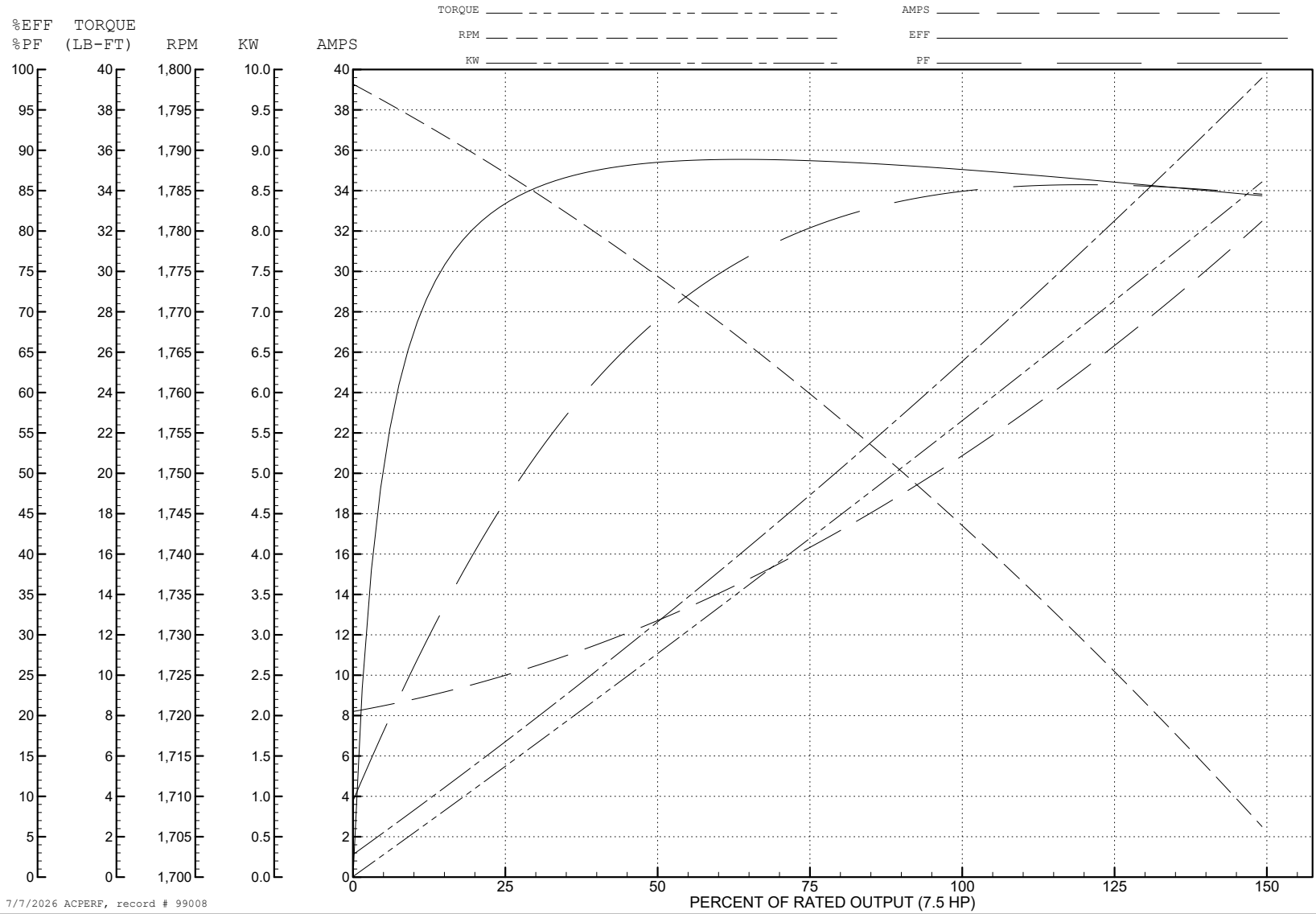
ABB Motors and Mechanical Inc.

WINDING # 37WGL952

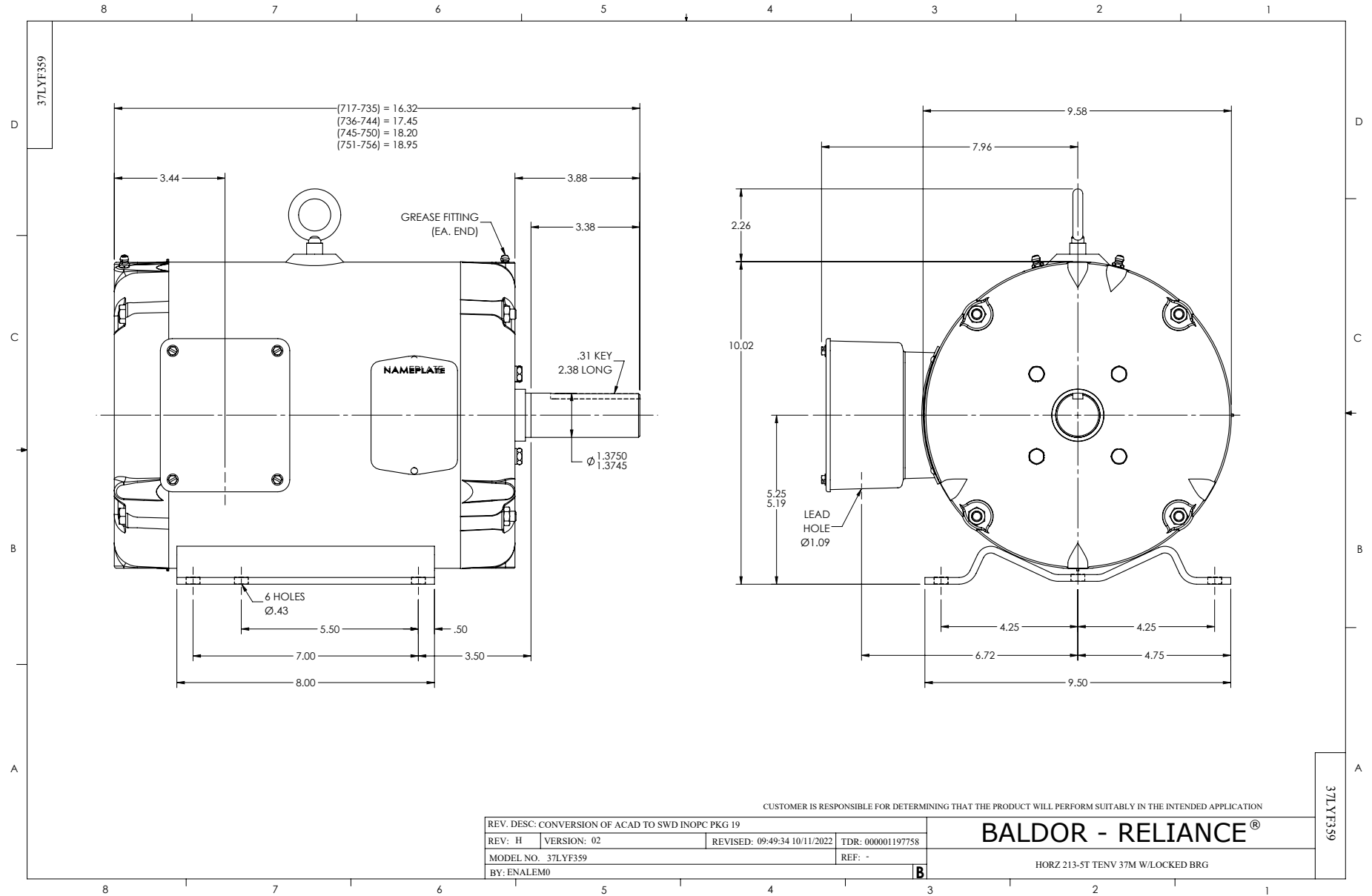
Typical performance - not guaranteed values.

7.5 HP 3 PH 60 HZ 1750 RPM 208 V 3728M

TORQUES (LB-FT): PO=48 PU=28.1 LR=32.5 LRA=113



7/7/2026 ACPERF, record # 99008



CD0005

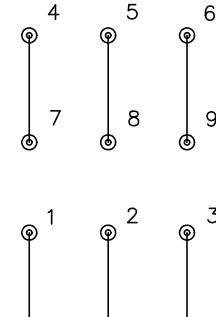


LOW VOLTAGE
(2Y)



LINE

HIGH VOLTAGE
(1Y)



LINE

NOTES:

1. INTERCHANGE ANY TWO LINE LEADS TO REVERSE ROTATION.
2. OPTIONAL THERMOSTATS ARE PROVIDED WHEN SPECIFIED.
3. ACTUAL NUMBER OF INTERNAL PARALLEL CIRCUITS MAY BE A MULTIPLE OF THOSE SHOWN ABOVE.
4. LEAD COLORS ARE OPTIONAL. LEADS MUST ALWAYS BE NUMBERED AS SHOWN.

CD0005

REV. DESC: REVISE TO SHOW OPTIONAL COLORS

REV. LTR: E BY: JLP REVISED: 01/19/99 10:15 TDR: 0171435

500000

FILE: AAA00005140

MDL: -

MTL: -

BALDOR ELECTRIC Co.

3PH, DV, 9 LEADS