

**BALDOR • RELIANCE**

---

# Customer information packet

## AOM3708T

5 AIR OVERHP, 1150RPM, 3PH, 60HZ, 215T, 3734M

Class - None

Division - Not Applicable

## Specifications

Enclosure	TEAO
Frame	215T
Frame Material	Steel
Frequency	60.00 Hz
Haz Area Class and Group	None
Haz Area Division	Not Applicable
Motor Letter Type	Three Phase
Output @ Frequency	5.000 HP @ 60 HZ
Phase	3
Synchronous Speed @ Frequency	1200 RPM @ 60 HZ
Voltage @ Frequency	208.0 V @ 60 HZ 230.0 V @ 60 HZ 460.0 V @ 60 HZ
Agency Approvals	CSA UR
Ambient Temperature	40 °C
Auxillary Box	No Auxillary Box
Auxillary Box Lead Termination	None
Base Indicator	Rigid
Bearing Grease Type	Polyrex EM (-20F +300F)
Blower	None
Current @ Voltage	7.700 A @ 460.0 V 16.000 A @ 208.0 V 14.400 A @ 230.0 V
Design Code	B
Drip Cover	No Drip Cover
Duty Rating	CONT
Efficiency @ 100% Load	86.5 %
Electrically Isolated Bearing	Not Electrically Isolated
Feedback Device	NO FEEDBACK
Front Shaft Indicator	None
Heater Indicator	No Heater

## Part detail

Revision	C
Type	AC
Mech. spec.	37F359
Base	
Status	PRD/A
Elec. spec.	37WGL953
Layout	37LYF359
Eff. date	05-10-2024
CD Diagram	CD0005
Poles	06
Leads	9#14
Proprietary	False
Created date	03-21-2023

High Voltage Full Load Amps	7.7 a
Insulation Class	F
Inverter Code	Not Inverter
KVA Code	J
Lifting Lugs	Standard Lifting Lugs
Locked Bearing Indicator	Locked Bearing
Motor Lead Quantity/Wire Size	9 @ 14 AWG
Motor Lead Termination	Flying Leads
Motor Standards	NEMA
Motor Type	3734M
Mounting Arrangement	F1
Number of Poles	6
Overall Length	16.32 IN
Power Factor	69
Product Family	General Purpose
Pulley End Bearing Type	Ball
Pulley Face Code	Standard
Pulley Shaft Indicator	Standard
Rodent Screen	None
Service Factor	1.00
Shaft Diameter	1.375 IN
Shaft Ground Indicator	No Shaft Grounding
Shaft Rotation	Reversible
Shaft Slinger Indicator	No Slinger
Speed	1150 rpm
Speed Code	Single Speed
Starting Method	Direct on line
Thermal Device - Bearing	None
Thermal Device - Winding	None
Vibration Sensor Indicator	No Vibration Sensor
Winding Thermal 1	None
Winding Thermal 2	None

**Nameplate**

<b>NP1256L</b>									
<b>CAT.NO.</b>	AOM3708T								
<b>SPEC.</b>	37F359L953G1								
<b>HP</b>	5 AIR OVER								
<b>VOLTS</b>	208-230/460								
<b>AMP</b>	16-14.4/7.7								
<b>RPM</b>	1150								
<b>FRAME</b>	215T		<b>HZ</b>	60		<b>PH</b>	3		
<b>SER.F.</b>	1.00	<b>CODE</b>	J	<b>DES</b>	B	<b>CLASS</b>	F		
<b>NEMA-NOM-EFF</b>	86.5	<b>PF</b>	69						
<b>RATING</b>	40C AMB-CONT								
<b>CC</b>									
<b>DE</b>	6307	<b>ODE</b>	6206						
<b>ENCL</b>	TEAO	<b>SN</b>							
	1275 FPM AT 170CFM								

**Accessories**

<b>Part number</b>	<b>Description</b>	<b>Multiplier</b>
37-3301	C FACE KIT	P1

**AC Induction Motor Performance Data**

Record # 99009

Typical performance - not guaranteed values

Winding: 37WGL953-R001		Type: 3734M	Enclosure: TEAO	
<b>Nameplate Data</b>			<b>460 V, 60 Hz: High Voltage Connection</b>	
Rated Output (HP)	5 AIR OVER	Full Load Torque	22.62 LB-FT	
Volts	208-230/460	Start Configuration	direct on line	
Full Load Amps	16-14.4/7.7	Breakdown Torque	68.4 LB-FT	
R.P.M.	1150	Pull-up Torque	44.5 LB-FT	
Hz	60 Phase	3	Locked-rotor Torque	49.9 LB-FT
NEMA Design Code	B KVA Code	J	Starting Current	48.3 A
Service Factor (S.F.)		1	No-load Current	4.3 A
NEMA Nom. Eff.	86.5 Power Factor	69	Line-line Res. @ 25°C	2.03 Ω
Rating - Duty	40C AMB-CONT		Temp. Rise @ Rated Load	79°C
			Locked-rotor Power Factor	24.3
			Rotor inertia	0.846 lb-ft <sup>2</sup>

**Load Characteristics 460 V, 60 Hz, 5 HP**

% of Rated Load	25	50	75	100	125	150
Power Factor	32	51	63	69	73	75
Efficiency	79.7	86.6	87.2	86.5	84.5	82
Speed	1189	1178	1166	1153	1136	1116
Line amperes	4.53	5.32	6.4	7.74	9.5	11.43

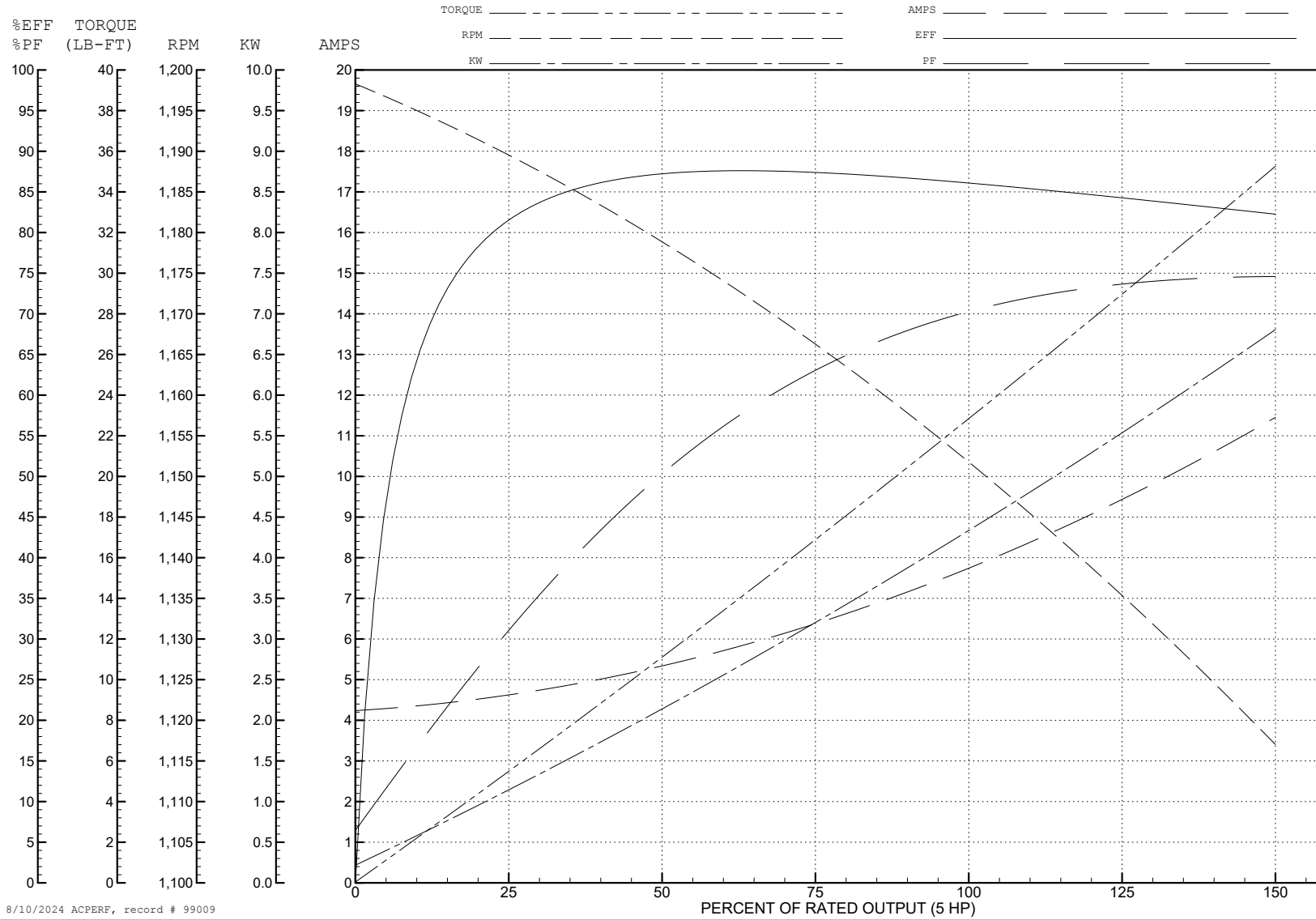
ABB Motors and Mechanical Inc.

WINDING # 37WGL953

Typical performance - not guaranteed values.

5 HP 3 PH 60 HZ 1150 RPM 460 V 3734M

TORQUES (LB-FT): PO=68.4 PU=44.5 LR=49.9 LRA=48.3



8/10/2024 ACPERF, record # 99009

**AC Induction Motor Performance Data**

Record # 99010

Typical performance - not guaranteed values

Winding: 37WGL953-R001		Type: 3734M	Enclosure: TEAO	
<b>Nameplate Data</b>			<b>208 V, 60 Hz: High Voltage Connection</b>	
Rated Output (HP)	5 AIR OVER	Full Load Torque	22.8 LB-FT	
Volts	208-230/460	Start Configuration	direct on line	
Full Load Amps	16-14.4/7.7	Breakdown Torque	54.6 LB-FT	
R.P.M.	1150	Pull-up Torque	34.2 LB-FT	
Hz	60 Phase	Locked-rotor Torque	38.4 LB-FT	
NEMA Design Code	B KVA Code	Starting Current	84.2 A	
Service Factor (S.F.)	1	No-load Current	6.93 A	
NEMA Nom. Eff.	86.5 Power Factor	Line-line Res. @ 25°C	0.508 Ω	
Rating - Duty	40C AMB-CONT	Temp. Rise @ Rated Load	83°C	
		Locked-rotor Power Factor	24.3	
		Rotor inertia	0.846 lb-ft <sup>2</sup>	

**Load Characteristics 208 V, 60 Hz, 5 HP**

% of Rated Load	25	50	75	100	125	150
Power Factor	40	61	70	74	76	73
Efficiency	82.7	88	87.6	86.5	83.1	78.5
Speed	1187	1174	1159	1143	1120	1085
Line amperes	7.63	9.74	12.54	16.01	20.65	27.01



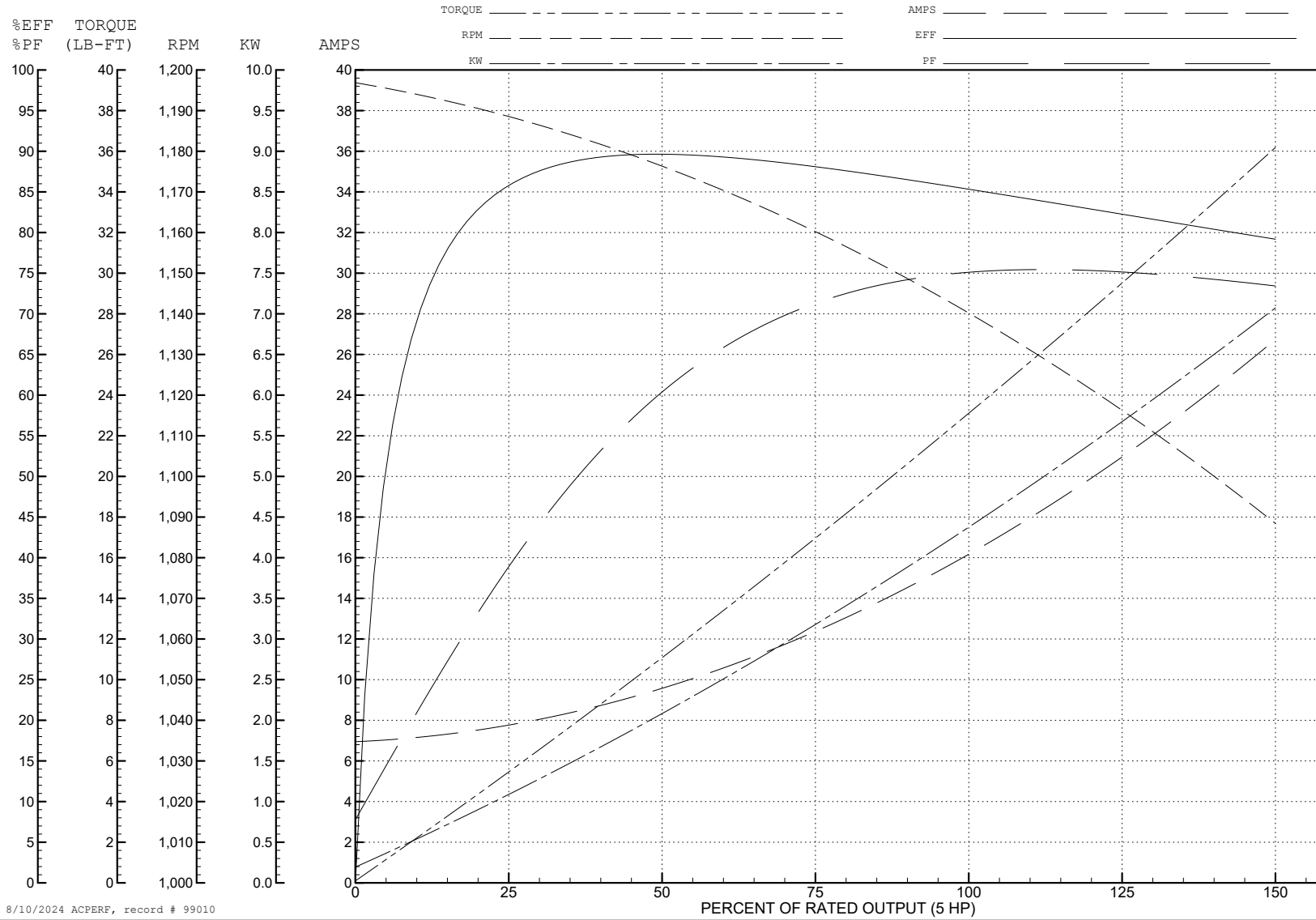
ABB Motors and Mechanical Inc.

WINDING # 37WGL953

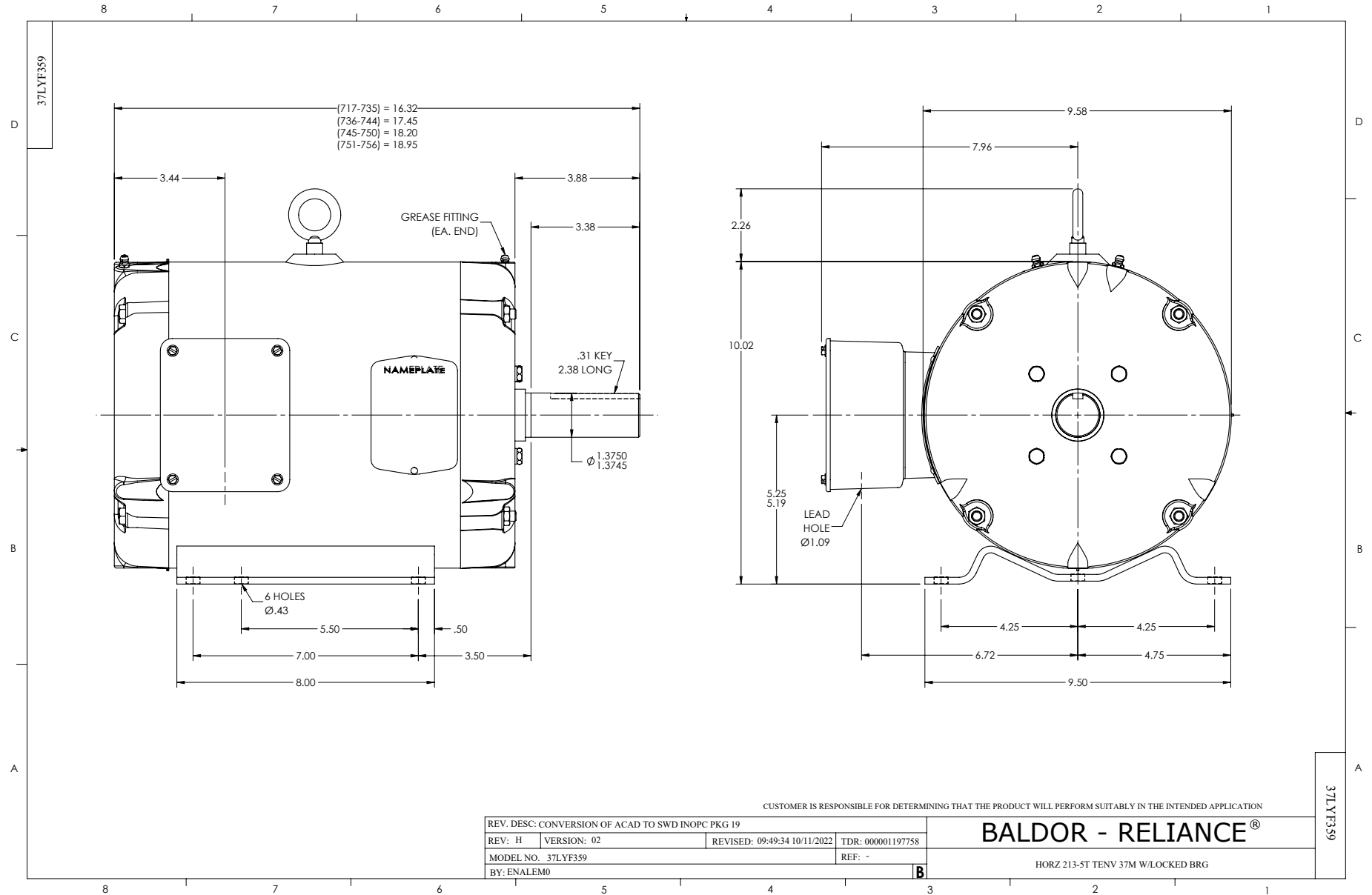
Typical performance - not guaranteed values.

5 HP 3 PH 60 HZ 1150 RPM 208 V 3734M

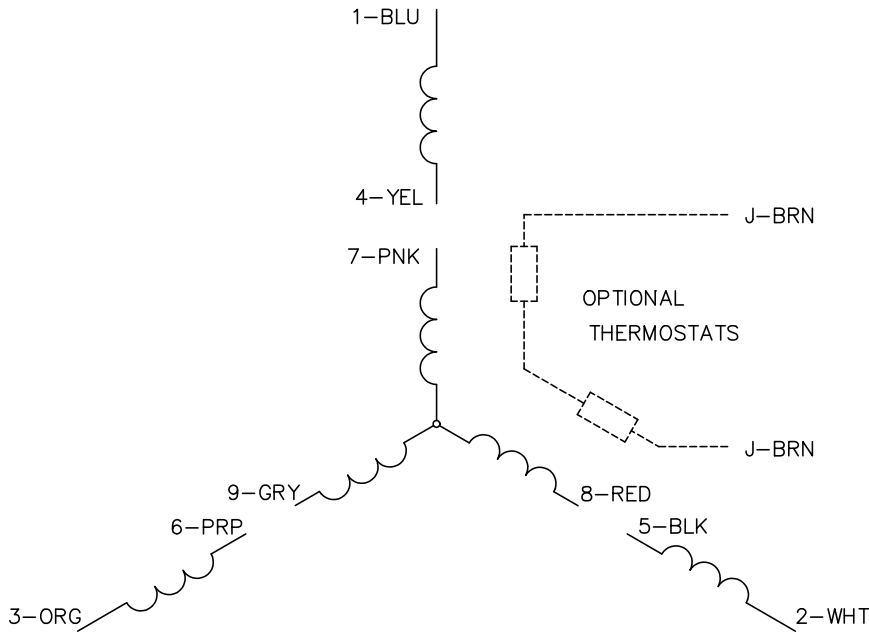
TORQUES (LB-FT): PO=54.6 PU=34.2 LR=38.4 LRA=84.2



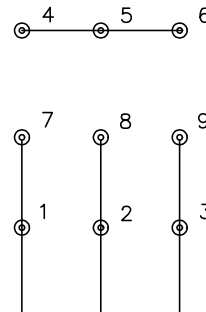
8/10/2024 ACPERF, record # 99010



CD0005

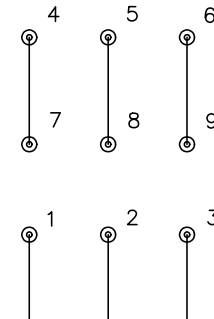


LOW VOLTAGE  
(2Y)



LINE

HIGH VOLTAGE  
(1Y)



LINE

NOTES:

1. INTERCHANGE ANY TWO LINE LEADS TO REVERSE ROTATION.
2. OPTIONAL THERMOSTATS ARE PROVIDED WHEN SPECIFIED.
3. ACTUAL NUMBER OF INTERNAL PARALLEL CIRCUITS MAY BE A MULTIPLE OF THOSE SHOWN ABOVE.
4. LEAD COLORS ARE OPTIONAL. LEADS MUST ALWAYS BE NUMBERED AS SHOWN.

CD0005

REV. DESC: REVISE TO SHOW OPTIONAL COLORS			
REV. LTR: E	BY: JLP	REVISED: 01/19/99 10:15	TDR: 0171435
S00000		FILE: AAA00005140	MDL: -
		MTL: -	

**BALDOR ELECTRIC Co.**

3PH, DV, 9 LEADS