

ABB BALDOR RELIANCE III

Customer information packet

AOM3705T

3 AIR OVERHP, 865RPM, 3PH, 60HZ, 215T, 3744M

Class - None

Division - Not Applicable

Specifications

Enclosure	TEAO
Frame	215T
Frame Material	Steel
Frequency	60.00 Hz
Haz Area Class and Group	None
Haz Area Division	Not Applicable
Motor Letter Type	Three Phase
Output @ Frequency	3.000 HP @ 60 HZ
Phase	3
Synchronous Speed @ Frequency	900 RPM @ 60 HZ
Voltage @ Frequency	460.0 V @ 60 HZ 230.0 V @ 60 HZ 208.0 V @ 60 HZ
Agency Approvals	CSA UR
Ambient Temperature	40 °C
Auxiliary Box	NO AUXILLARY BOX
Auxiliary Box Lead Termination	None
Base Indicator	Rigid
Bearing Grease Type	Polyrex EM (-20F +300F)
Blower	None
Current @ Voltage	5.200 A @ 460.0 V 11.300 A @ 208.0 V 10.400 A @ 230.0 V
Design Code	B
Drip Cover	No Drip Cover
Duty Rating	CONT
Efficiency @ 100% Load	86.5 %
Electrically Isolated Bearing	Not Electrically Isolated
Feedback Device	NO FEEDBACK
Front Face Code	Standard
Front Shaft Indicator	None

Part Detail

Revision	M
Type	AC
Mech. spec.	37F359
Base	
Status	PRD/A
Elec. spec.	37WGT944
Layout	37LYF359
Eff. date	10-09-2025
CD Diagram	CD0005
Poles	08
Leads	9#14 36" LONG Y
Proprietary	False
Created date	07-13-2007

Heater Indicator	No Heater
High Voltage Full Load Amps	5.2 a
Insulation Class	F
Inverter Code	Not Inverter
KVA Code	H
Lifting Lugs	Standard Lifting Lugs
Locked Bearing Indicator	Locked Bearing
Motor Lead Exit	Ko Box
Motor Lead Quantity/Wire Size	9 @ 14 AWG
Motor Lead Termination	Flying Leads
Motor Standards	NEMA
Motor Type	3744M
Mounting Arrangement	F1
Number of Poles	8
Overall Length	17.44 IN
Power Factor	62
Product Family	General Purpose
Pulley End Bearing Type	Ball
Pulley Face Code	Standard
Pulley Shaft Indicator	Standard
Rodent Screen	None
Service Factor	1.00
Shaft Diameter	1.375 IN
Shaft Extension Location	Pulley End
Shaft Ground Indicator	No Shaft Grounding
Shaft Rotation	Reversible
Shaft Slinger Indicator	No Slinger
Speed	865 rpm
Speed Code	Single Speed
Starting Method	Direct on line
Thermal Device - Bearing	None
Thermal Device - Winding	None
Vibration Sensor Indicator	No Vibration Sensor
Winding Thermal 1	None

Winding Thermal 2

None

Nameplate

NP1256L									
CAT.NO.	AOM3705T								
SPEC.	37F359T944G1								
HP	3 AIR OVER								
VOLTS	208-230/460								
AMP	11.3-10.4/5.2								
RPM	865								
FRAME	215T		HZ	60		PH	3		
SER.F.	1.00	CODE	H	DES	B	CLASS	F		
NEMA-NOM-EFF	86.5	PF	62						
RATING	40C AMB-CONT								
CC									
DE	6307		ODE	6206					
ENCL	TEAO	SN							
	850 FPM AT 170 CFM								

Accessories

Part number	Description	Multiplier
37-3301	C FACE KIT	P1

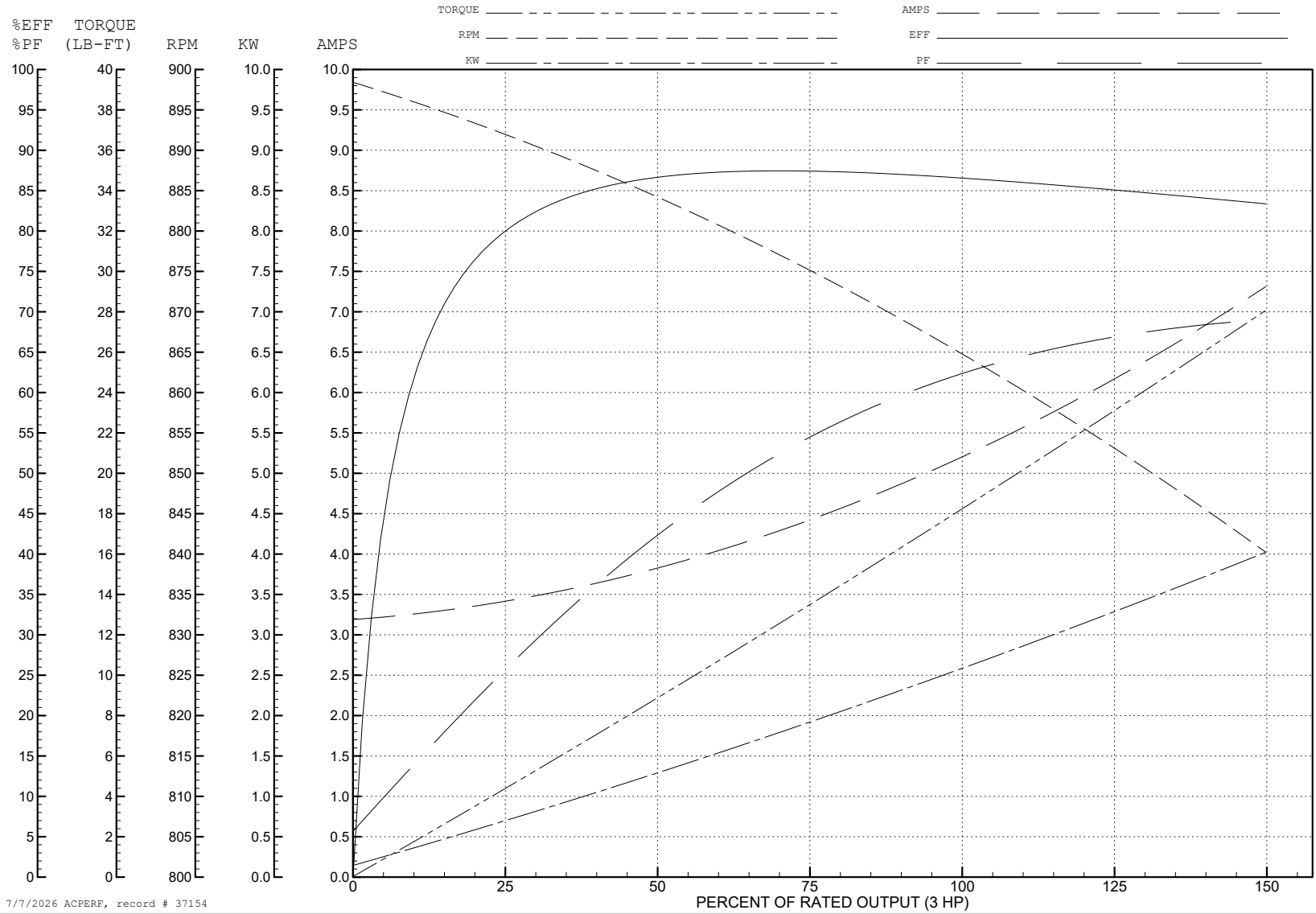
ABB Motors and Mechanical Inc.

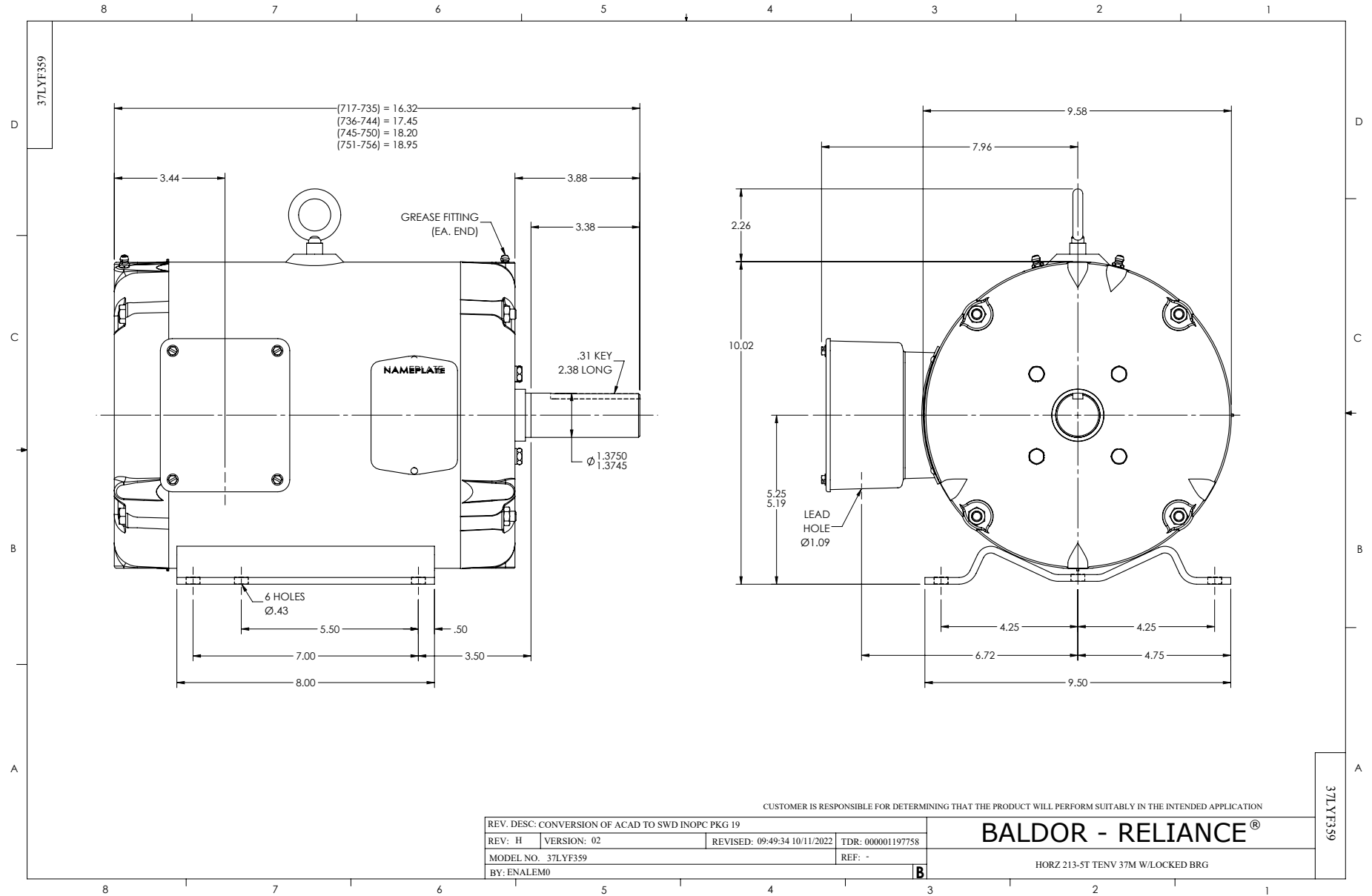
WINDING # 37WGT944

Typical performance - not guaranteed values.

3 HP 3 PH 60 HZ 865 RPM 460 V 3744M

TORQUES (LB-FT): PO=49 PU=27.6 LR=30.6 LRA=25.6

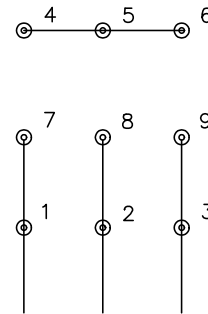




CD0005



LOW VOLTAGE
(2Y)



LINE

HIGH VOLTAGE
(1Y)



LINE

NOTES:

1. INTERCHANGE ANY TWO LINE LEADS TO REVERSE ROTATION.
2. OPTIONAL THERMOSTATS ARE PROVIDED WHEN SPECIFIED.
3. ACTUAL NUMBER OF INTERNAL PARALLEL CIRCUITS MAY BE A MULTIPLE OF THOSE SHOWN ABOVE.
4. LEAD COLORS ARE OPTIONAL. LEADS MUST ALWAYS BE NUMBERED AS SHOWN.

CD0005

REV. DESC: REVISE TO SHOW OPTIONAL COLORS

REV. LTR: E BY: JLP REVISED: 01/19/99 10:15 TDR: 0171435

500000

FILE: AAA00005140

MDL: -

MTL: -

BALDOR ELECTRIC Co.

3PH, DV, 9 LEADS