

BALDOR • RELIANCE

Customer information packet

AOM3615T

5HP, 1740RPM, 3PH, 60HZ, 184T, 3634M, TEAO, F1

Class - None

Division - Not Applicable

Copyright © All product information within this document is subject to ABB Motors and Mechanical Inc. copyright © protection, unless otherwise noted.

6/18/2026 12:10:20 PM

Specifications

Enclosure	TEAO
Frame	184T
Frame Material	Steel
Frequency	60.00 Hz
Haz Area Class and Group	None
Haz Area Division	Not Applicable
Motor Letter Type	Three Phase
Output @ Frequency	5.000 HP @ 60 HZ
Phase	3
Synchronous Speed @ Frequency	1800 RPM @ 60 HZ
Voltage @ Frequency	208.0 V @ 60 HZ 230.0 V @ 60 HZ 460.0 V @ 60 HZ
Agency Approvals	CSA UR
Ambient Temperature	40 °C
Auxiliary Box	NO AUXILLARY BOX
Auxiliary Box Lead Termination	None
Base Indicator	Rigid
Bearing Grease Type	Polyrex EM (-20F +300F)
Blower	None
Current @ Voltage	6.900 A @ 460.0 V 14.200 A @ 208.0 V 13.800 A @ 230.0 V
Design Code	A
Drip Cover	No Drip Cover
Duty Rating	CONT
Efficiency @ 100% Load	87.5 %
Electrically Isolated Bearing	Not Electrically Isolated
Feedback Device	NO FEEDBACK
Front Shaft Indicator	None
Heater Indicator	No Heater

Part detail

Revision	D
Type	AC
Mech. spec.	36G256
Base	
Status	PRD/A
Elec. spec.	36WGQ064
Layout	36LYG256
Eff. date	01-05-2026
CD Diagram	CD0005
Poles	04
Leads	9#16
Proprietary	False
Created date	10-19-2023

High Voltage Full Load Amps	6.9 a
Insulation Class	F
Inverter Code	Not Inverter
KVA Code	J
Lifting Lugs	No Lifting Lugs
Locked Bearing Indicator	Locked Bearing
Motor Lead Quantity/Wire Size	9 @ 16 AWG
Motor Lead Termination	Flying Leads
Motor Standards	NEMA
Motor Type	3634M
Mounting Arrangement	F1
Number of Poles	4
Overall Length	15.00 IN
Power Factor	78
Product Family	General Purpose
Pulley End Bearing Type	Ball
Pulley Face Code	Standard
Pulley Shaft Indicator	Standard
Rodent Screen	None
Service Factor	1.15
Shaft Diameter	1.125 IN
Shaft Ground Indicator	No Shaft Grounding
Shaft Rotation	Reversible
Shaft Slinger Indicator	No Slinger
Speed	1740 rpm
Speed Code	Single Speed
Starting Method	Direct on line
Thermal Device - Bearing	None
Thermal Device - Winding	None
Vibration Sensor Indicator	No Vibration Sensor
Winding Thermal 1	None
Winding Thermal 2	None

Nameplate

NP1256L									
CAT.NO.	AOM3615T								
SPEC.	36G256Q064G1								
HP	5								
VOLTS	208-230/460 AIR OVER								
AMP	14.2-13.8/6.9								
RPM	1740								
FRAME	184T		HZ	60		PH	3		
SER.F.	1.15	CODE	J	DES	A	CLASS	F		
NEMA-NOM-EFF	87.5	PF	78						
RATING	40C AMB-CONT								
CC									
DE	6206		ODE	6205					
ENCL	TEAO	SN							
	1650 FPM AT 100CFM								

Accessories

Part number	Description	Multiplier
36-3301	C FACE KIT	A8
36EP1304A62SP	FLANGE MTD ENDPLATE 182-4TD -ENCL (LESS	A8

AC Induction Motor Performance Data

Record # 102150

Typical performance - not guaranteed values

Winding: 36WGQ064-R001		Type: 3634M		Enclosure: TEFC	
Nameplate Data			460 V, 60 Hz: High Voltage Connection		
Rated Output (HP)	5	Full Load Torque	15.13 LB-FT		
Volts	208-230/460	Start Configuration	direct on line		
Full Load Amps	14.2-13.8/6.9	Breakdown Torque	50 LB-FT		
R.P.M.	1740	Pull-up Torque	26.6 LB-FT		
Hz	60 Phase	3	Locked-rotor Torque	32.8 LB-FT	
NEMA Design Code	A KVA Code	J	Starting Current	45 A	
Service Factor (S.F.)	1.15	No-load Current	3.51 A		
NEMA Nom. Eff.	87.5 Power Factor	78	Line-line Res. @ 25°C	2.89 Ω	
Rating - Duty	40C AMB-CONT		Temp. Rise @ Rated Load	81°C	
S.F. Amps			Temp. Rise @ S.F. Load	98°C	
			Locked-rotor Power Factor	43.5	
			Rotor inertia	0.317 lb-ft ²	

Load Characteristics 460 V, 60 Hz, 5 HP

% of Rated Load	25	50	75	100	125	150	S.F.
Power Factor	38	59	71	78	81	82	77
Efficiency	81.7	87.5	88.3	87.6	86.1	83.9	87.3
Speed	1787	1773	1758	1741	1723	1701	1737
Line amperes	3.81	4.52	5.57	6.86	8.33	10.25	7.96

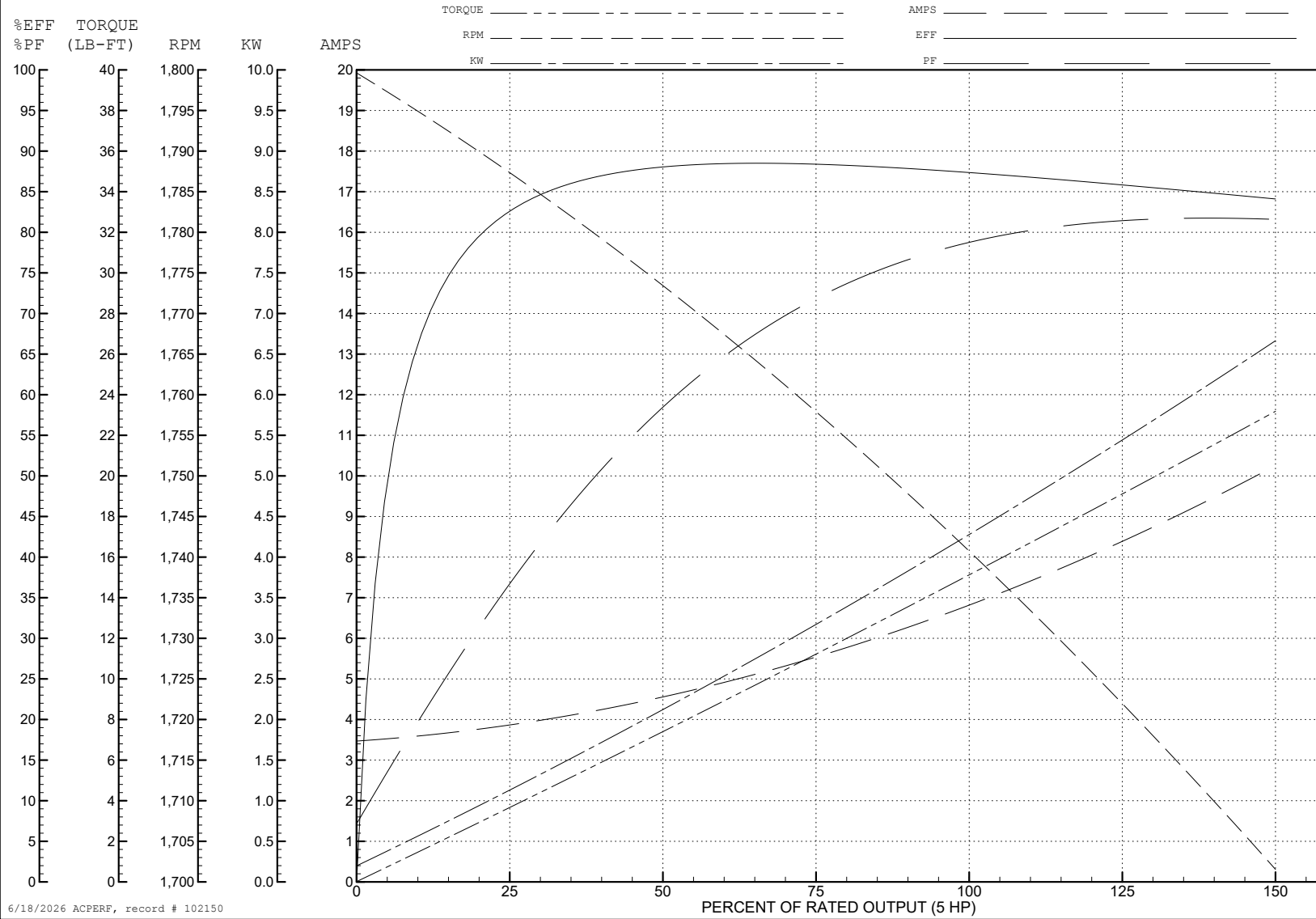
ABB Motors and Mechanical Inc.

WINDING # 36WGQ064

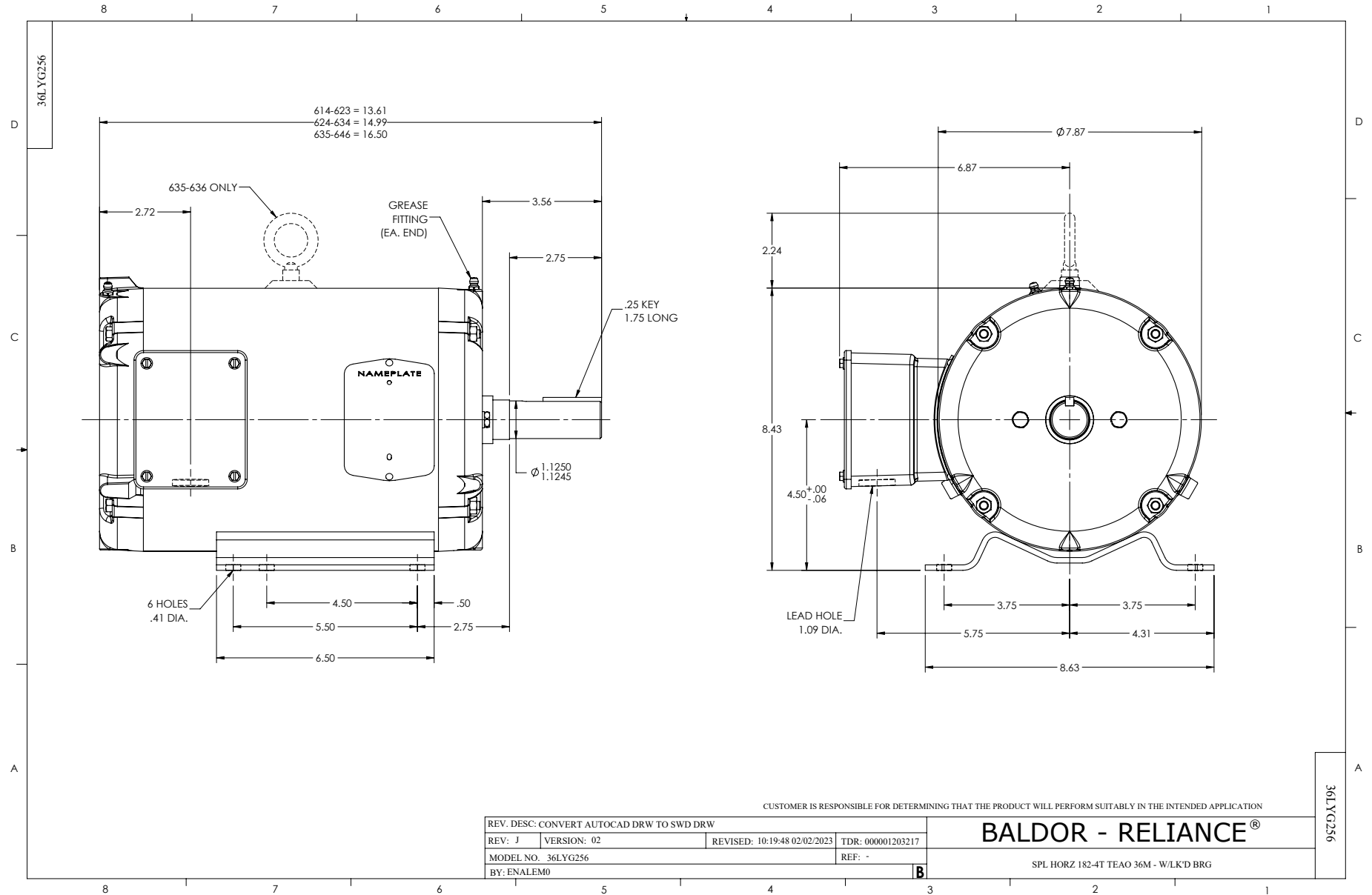
5 HP 3 PH 60 HZ 1740 RPM 460 V 3634M

Typical performance - not guaranteed values.

TORQUES (LB-FT): PO=50 PU=26.6 LR=32.8 LRA=45



6/18/2026 ACPERF, record # 102150



CD0005



LOW VOLTAGE
(2Y)



LINE

HIGH VOLTAGE
(1Y)



LINE

NOTES:

1. INTERCHANGE ANY TWO LINE LEADS TO REVERSE ROTATION.
2. OPTIONAL THERMOSTATS ARE PROVIDED WHEN SPECIFIED.
3. ACTUAL NUMBER OF INTERNAL PARALLEL CIRCUITS MAY BE A MULTIPLE OF THOSE SHOWN ABOVE.
4. LEAD COLORS ARE OPTIONAL. LEADS MUST ALWAYS BE NUMBERED AS SHOWN.

CD0005

REV. DESC: REVISE TO SHOW OPTIONAL COLORS			
REV. LTR: E	BY: JLP	REVISED: 01/19/99 10:15	TDR: 0171435
S00000		FILE: AAA00005140	MDL: -
		MTL: -	

BALDOR ELECTRIC Co.

3PH, DV, 9 LEADS