

BALDOR • RELIANCE

Customer information packet

AOM3558T

2 AIR OVERHP, 1735RPM, 3PH, 60HZ, 145T, 3524M

Class - None

Division - Not Applicable

Specifications

Enclosure	TEAO
Frame	145T
Frame Material	Steel
Frequency	60.00 Hz
Haz Area Class and Group	None
Haz Area Division	Not Applicable
Motor Letter Type	Three Phase
Output @ Frequency	2.000 HP @ 60 HZ
Phase	3
Synchronous Speed @ Frequency	1800 RPM @ 60 HZ
Voltage @ Frequency	208.0 V @ 60 HZ 230.0 V @ 60 HZ 460.0 V @ 60 HZ
Agency Approvals	CSA UR
Ambient Temperature	40 °C
Auxillary Box	No Auxillary Box
Auxillary Box Lead Termination	None
Base Indicator	Rigid
Bearing Grease Type	Polyrex EM (-20F +300F)
Blower	None
Current @ Voltage	6.100 A @ 208.0 V 5.900 A @ 230.0 V 2.950 A @ 460.0 V
Design Code	B
Drip Cover	No Drip Cover
Duty Rating	CONT
Efficiency @ 100% Load	82.5 %
Electrically Isolated Bearing	Not Electrically Isolated
Feedback Device	NO FEEDBACK
Front Shaft Indicator	None
Heater Indicator	No Heater

Part detail

Revision	C
Type	AC
Mech. spec.	35K695
Base	
Status	PRD/A
Elec. spec.	35WGX922
Layout	35LYK695
Eff. date	05-14-2024
CD Diagram	CD0005
Poles	04
Leads	9#18
Proprietary	False
Created date	03-11-2022

High Voltage Full Load Amps	3.0 a
Insulation Class	F
Inverter Code	Not Inverter
KVA Code	K
Lifting Lugs	No Lifting Lugs
Locked Bearing Indicator	Locked Bearing
Motor Lead Quantity/Wire Size	9 @ 18 AWG
Motor Lead Termination	Flying Leads
Motor Standards	NEMA
Motor Type	3524M
Mounting Arrangement	F1
Number of Poles	4
Overall Length	12.12 IN
Power Factor	76
Product Family	General Purpose
Pulley End Bearing Type	Ball
Pulley Face Code	Standard
Pulley Shaft Indicator	Standard
Rodent Screen	None
Service Factor	1.15
Shaft Diameter	0.875 IN
Shaft Ground Indicator	No Shaft Grounding
Shaft Rotation	Reversible
Shaft Slinger Indicator	No Slinger
Speed	1735 rpm
Speed Code	Single Speed
Starting Method	Direct on line
Thermal Device - Bearing	None
Thermal Device - Winding	None
Vibration Sensor Indicator	No Vibration Sensor
Winding Thermal 1	None
Winding Thermal 2	None

Nameplate

NP1256L									
CAT.NO.	AOM3558T								
SPEC.	35K695Z922G1								
HP	2 AIR OVER								
VOLTS	208-230/460								
AMP	6.1-5.9/2.95								
RPM	1735								
FRAME	145T		HZ	60		PH	3		
SER.F.	1.15	CODE	K	DES	B	CLASS	F		
NEMA-NOM-EFF	82.5	PF	76						
RATING	40C AMB-CONT								
CC									
DE	6205		ODE	6203					
ENCL	TEAO	SN							
	SFA 7-6.6/3.3								

Accessories

Part number	Description	Multiplier
35-8762	C FACE KIT	A8
35EP1506A01SP	D-FLANGE KIT	A8

AC Induction Motor Performance Data

Record # 88665

Typical performance - not guaranteed values

Winding: 35WGZ922-R001		Type: 3524M	Enclosure: TEAO	
Nameplate Data			460 V, 60 Hz: High Voltage Connection	
Rated Output (HP)	2 AIR OVER	Full Load Torque	6.05 LB-FT	
Volts	208-230/460	Start Configuration	direct on line	
Full Load Amps	6.1-5.9/2.95	Breakdown Torque	23.39 LB-FT	
R.P.M.	1735	Pull-up Torque	18.17 LB-FT	
Hz	60 Phase	3	Locked-rotor Torque	21.97 LB-FT
NEMA Design Code	B KVA Code	K	Starting Current	23.33 A
Service Factor (S.F.)		1.15	No-load Current	1.74 A
NEMA Nom. Eff.	82.5 Power Factor	76	Line-line Res. @ 25°C	10.6 Ω
Rating - Duty	40C AMB-CONT		Temp. Rise @ Rated Load	75°C
S.F. Amps	7-6.6/3.3		Temp. Rise @ S.F. Load	90°C
			Locked-rotor Power Factor	68.3
			Rotor inertia	0.173 lb-ft ²

Load Characteristics 460 V, 60 Hz, 2 HP

% of Rated Load	25	50	75	100	125	150	S.F.
Power Factor	36	56	69	77	82	85	80
Efficiency	72.6	81.5	83.6	83.3	81.9	80	82.5
Speed	1785	1771	1755	1738	1721	1700	1728
Line amperes	1.82	2.07	2.44	2.92	3.5	4.11	3.27

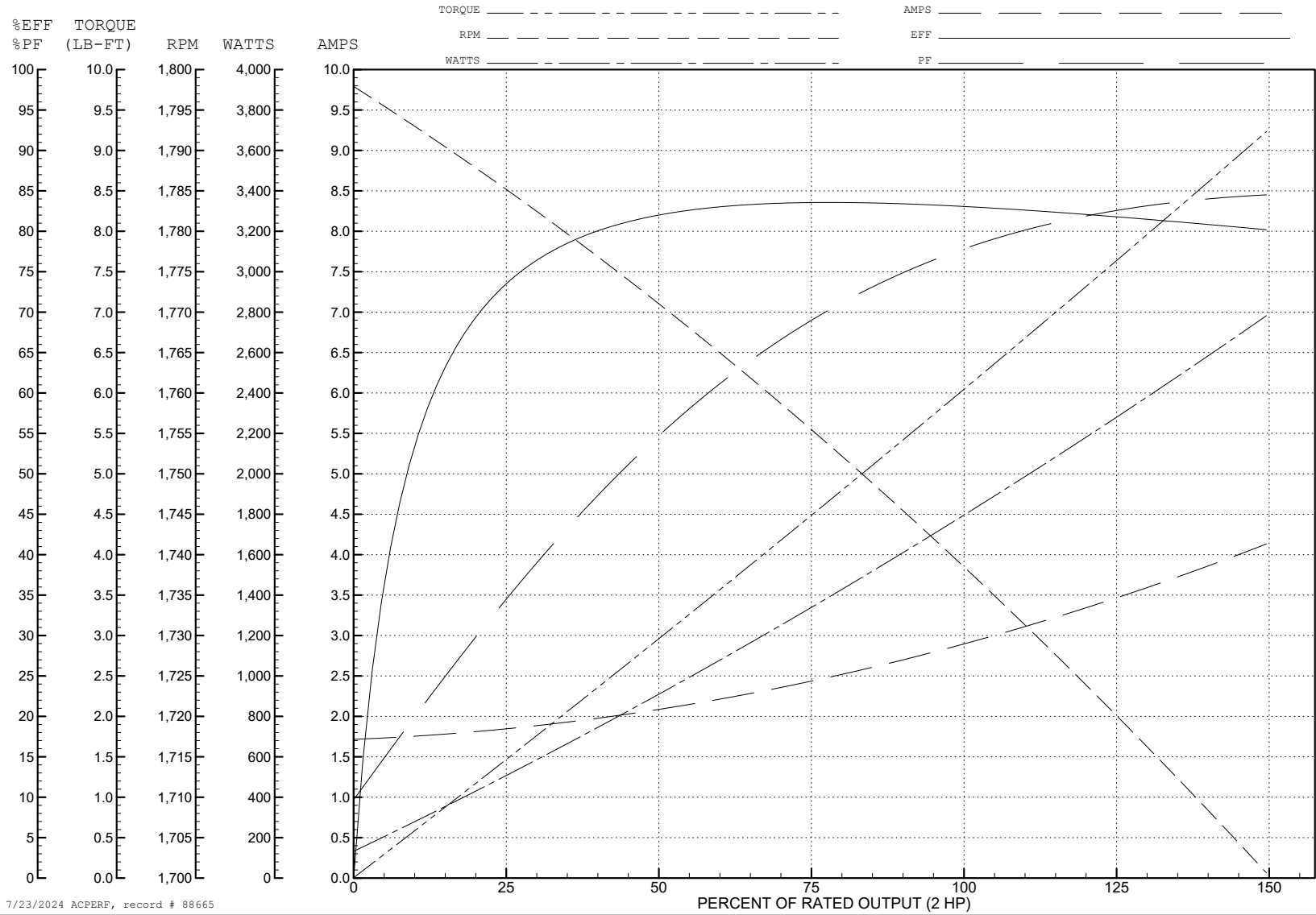
ABB Motors and Mechanical Inc.

WINDING # 35WGZ922

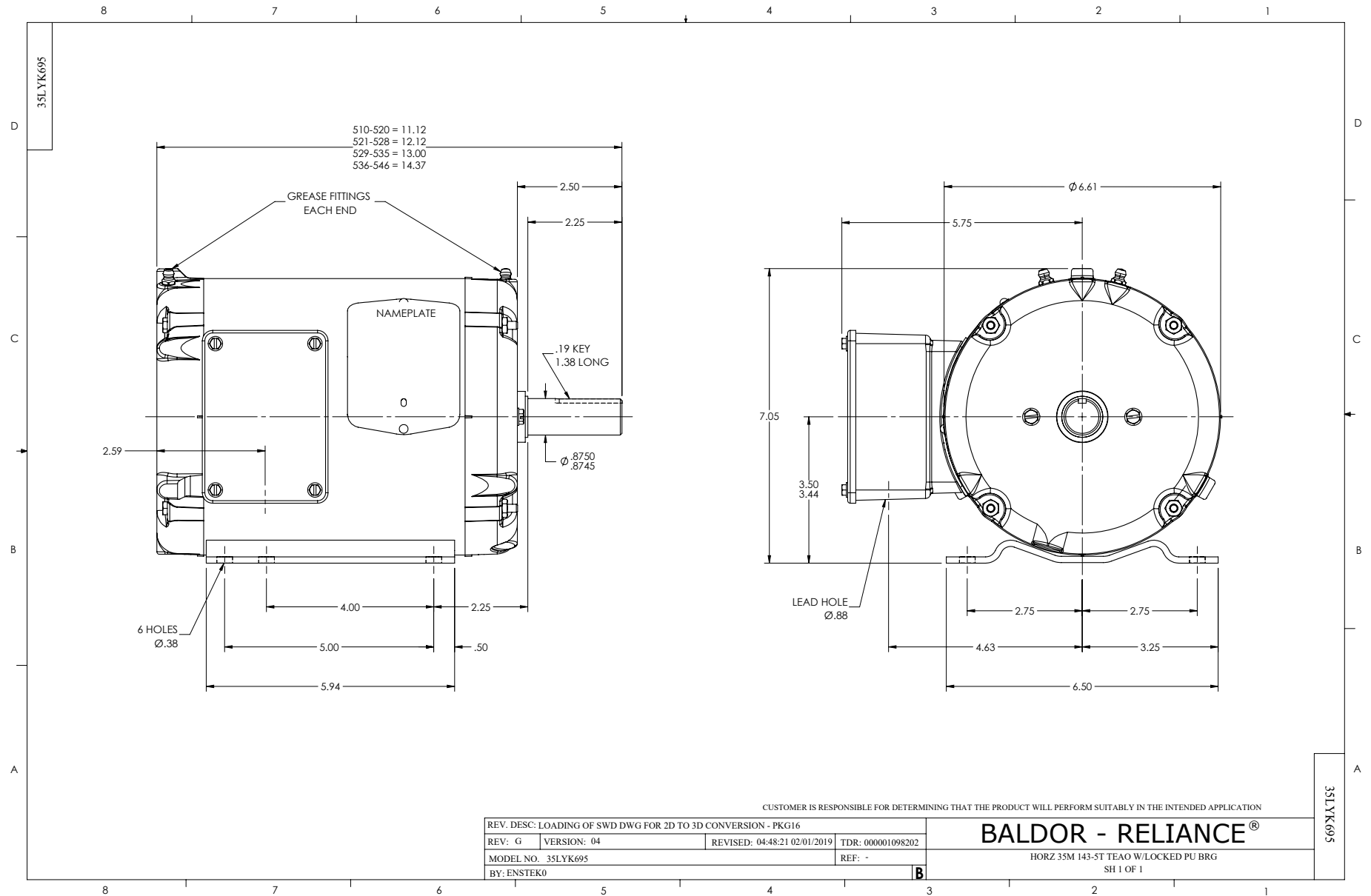
Typical performance - not guaranteed values.

2 HP 3 PH 60 HZ 1735 RPM 460 V 3524M

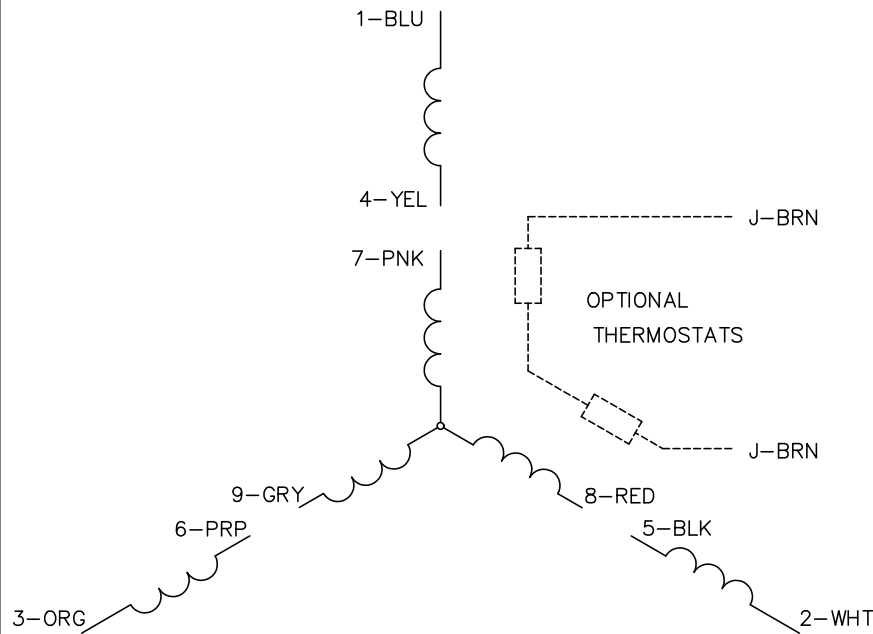
TORQUES (LB-FT): PO=23.39 PU=18.17 LR=21.97 LRA=23.33



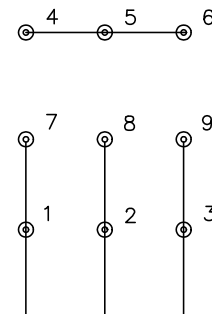
7/23/2024 ACPERF, record # 88665



CD0005

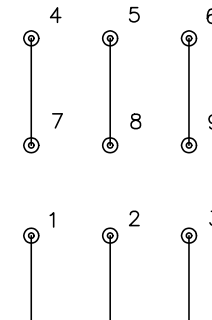


LOW VOLTAGE
(2Y)



LINE

HIGH VOLTAGE
(1Y)



LINE

NOTES:

1. INTERCHANGE ANY TWO LINE LEADS TO REVERSE ROTATION.
2. OPTIONAL THERMOSTATS ARE PROVIDED WHEN SPECIFIED.
3. ACTUAL NUMBER OF INTERNAL PARALLEL CIRCUITS MAY BE A MULTIPLE OF THOSE SHOWN ABOVE.
4. LEAD COLORS ARE OPTIONAL. LEADS MUST ALWAYS BE NUMBERED AS SHOWN.

CD0005

REV. DESC: REVISE TO SHOW OPTIONAL COLORS			
REV. LTR: E	BY: JLP	REVISED: 01/19/99 10:15	TDR: 0171435
S00000		FILE: AAA00005140	MDL: -
		MTL: -	

BALDOR ELECTRIC Co.

3PH, DV, 9 LEADS