

ABB BALDOR RELIANCE III

Customer information packet

AOM25904T

5HP, 870RPM, 3PH, 60HZ, 254T, 3936M, TEAO, F1

Class -

Division - Not Applicable

Specifications

Enclosure	TEAO
Frame	254T
Frame Material	Steel
Frequency	60.00 Hz
Haz Area Division	Not Applicable
Motor Letter Type	Three Phase
Output @ Frequency	5.000 HP @ 60 HZ
Phase	3
Synchronous Speed @ Frequency	900 RPM @ 60 HZ
Voltage @ Frequency	460.0 V @ 60 HZ 230.0 V @ 60 HZ
Agency Approvals	CSA UR
Ambient Temperature	40 °C
Auxiliary Box	NO AUXILLARY BOX
Auxiliary Box Lead Termination	None
Base Indicator	Rigid
Bearing Grease Type	Polyrex EM (-20F +300F)
Blower	None
Current @ Voltage	18.400 A @ 230.0 V 18.600 A @ 208.0 V 9.200 A @ 460.0 V
Design Code	A
Drip Cover	No Drip Cover
Duty Rating	CONT
Efficiency @ 100% Load	84.0 %
Electrically Isolated Bearing	Not Electrically Isolated
Feedback Device	NO FEEDBACK
Front Face Code	Standard
Front Shaft Indicator	None
Heater Indicator	No Heater
High Voltage Full Load Amps	9.2 a

Part Detail

Revision	AJ
Type	AC
Mech. spec.	39J95
Base	
Status	PRD/A
Elec. spec.	39WGZ042
Layout	39LYJ095
Eff. date	04-09-2024
CD Diagram	CD0005
Poles	08
Leads	9#12 36" LG Y
Proprietary	False
Created date	01-01-0001

Insulation Class	F
Inverter Code	Not Inverter
KVA Code	H
Lifting Lugs	Standard Lifting Lugs
Locked Bearing Indicator	Locked Bearing
Motor Lead Exit	Ko Box
Motor Lead Quantity/Wire Size	9 @ 12 AWG
Motor Lead Termination	Flying Leads
Motor Standards	NEMA
Motor Type	3936M
Mounting Arrangement	F1
Number of Poles	8
Overall Length	19.63 IN
Power Factor	60
Product Family	General Purpose
Pulley End Bearing Type	Ball
Pulley Face Code	Standard
Pulley Shaft Indicator	Standard
Rodent Screen	None
Service Factor	1.15
Shaft Extension Location	Pulley End
Shaft Ground Indicator	No Shaft Grounding
Shaft Rotation	Reversible
Shaft Slinger Indicator	No Slinger
Speed	885 rpm
Speed Code	Single Speed
Starting Method	Direct on line
Thermal Device - Bearing	None
Thermal Device - Winding	None
Vibration Sensor Indicator	No Vibration Sensor

Nameplate

NP1256L										
CAT.NO.	AOM25904T									
SPEC.	39J95Z42									
HP	5 AIR OVER									
VOLTS	230/460									
AMP	18.4/9.2									
RPM	885									
FRAME	254T		HZ	60			PH	3		
SER.F.	1.15	CODE	H	DES	A	CLASS	F			
NEMA-NOM-EFF	84	PF	60							
RATING	40C AMB-CONT									
CC										
DE	6309		ODE	6208						
ENCL	TEAO	SN								
	900 FPM AT 250 CFM									

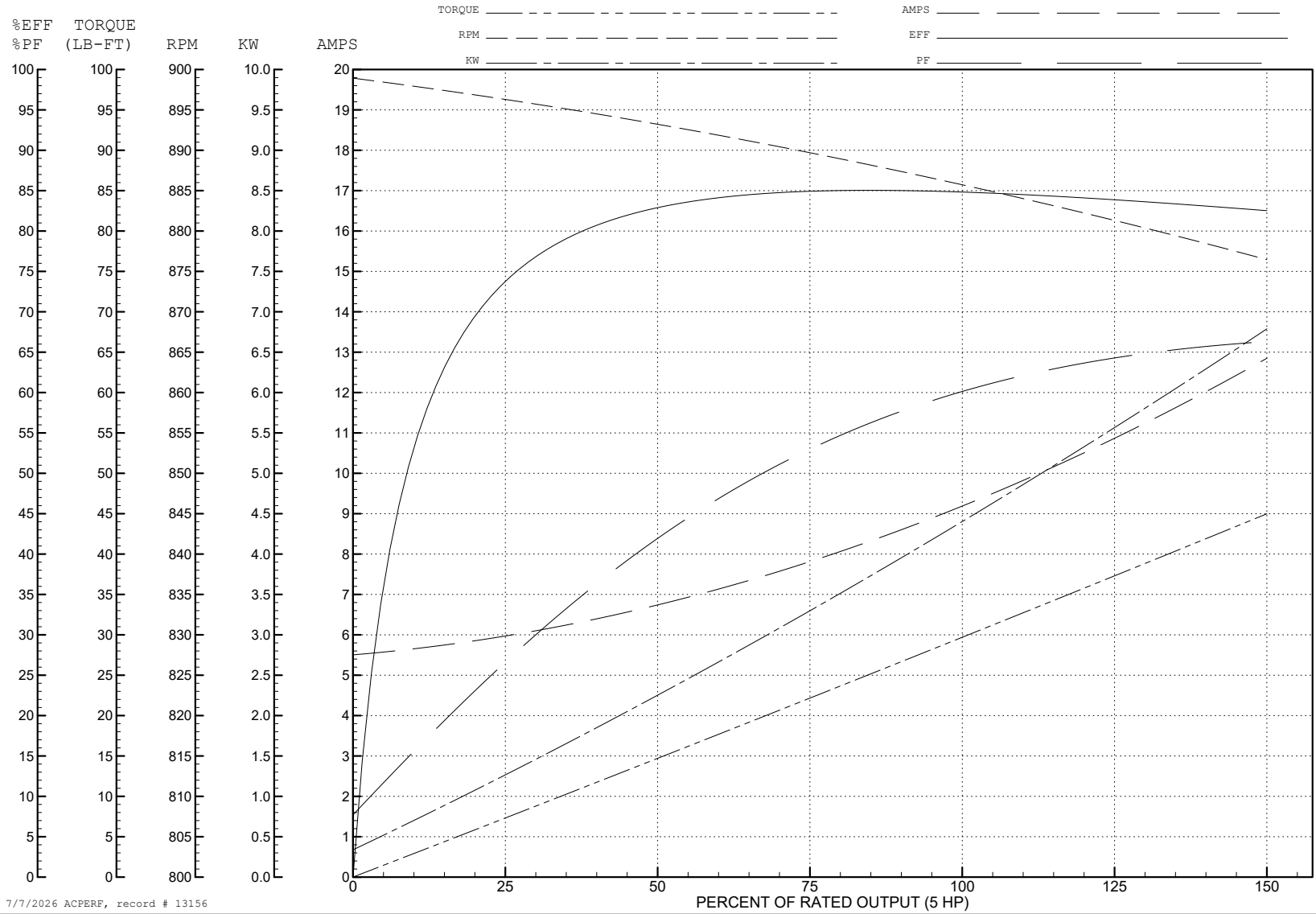
ABB Motors and Mechanical Inc.

WINDING # 39WGZ042

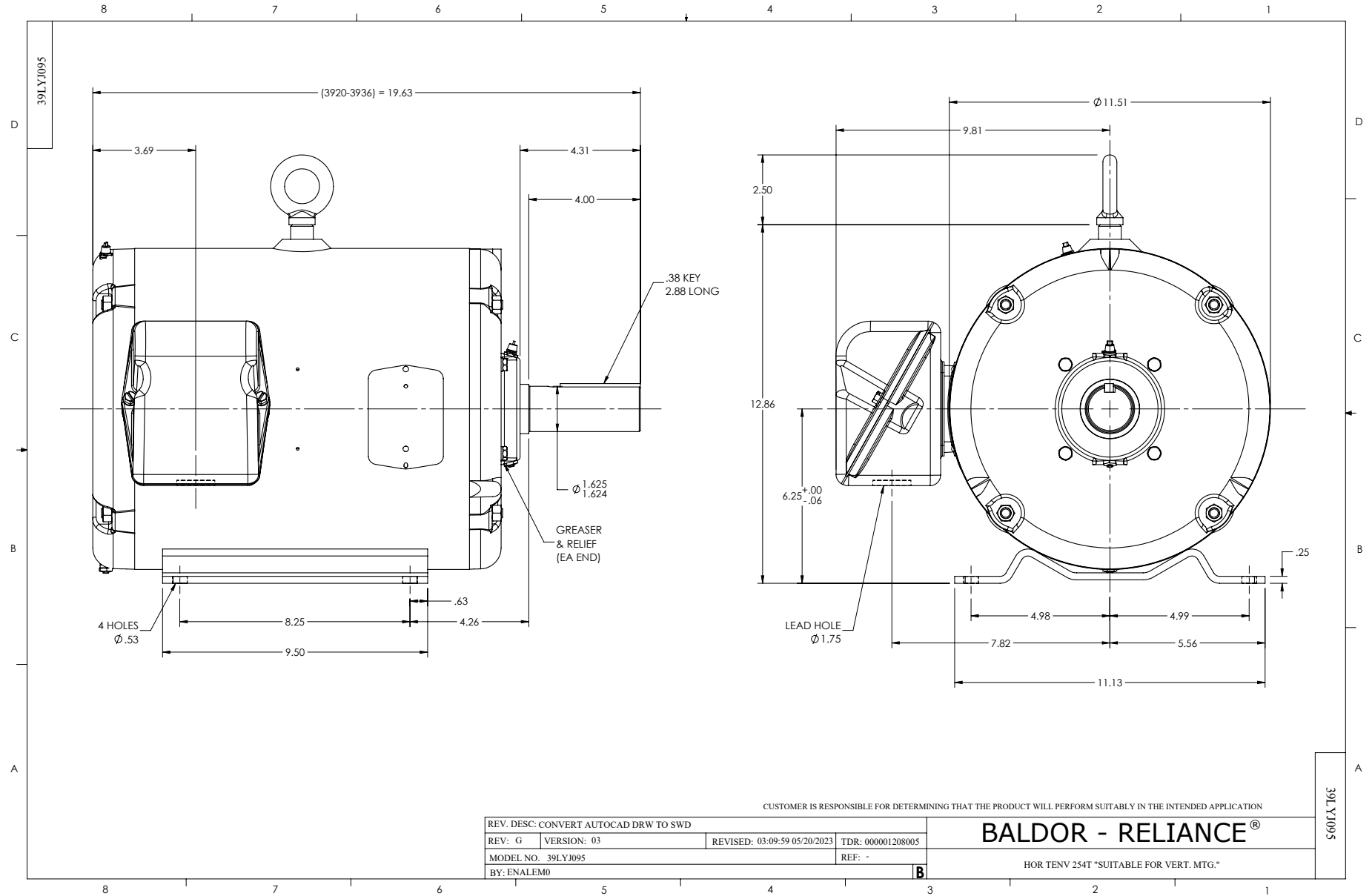
Typical performance - not guaranteed values.

5 HP 3 PH 60 HZ 885 RPM 460 V 3936M

TORQUES (LB-FT): PO=68.97 PU=42.46 LR=62.1 LRA=42.25



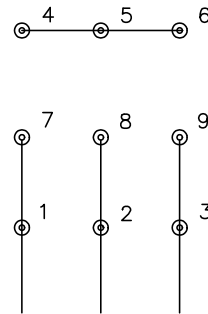
7/7/2026 ACPERF, record # 13156



CD0005



LOW VOLTAGE
(2Y)



LINE

HIGH VOLTAGE
(1Y)



LINE

NOTES:

1. INTERCHANGE ANY TWO LINE LEADS TO REVERSE ROTATION.
2. OPTIONAL THERMOSTATS ARE PROVIDED WHEN SPECIFIED.
3. ACTUAL NUMBER OF INTERNAL PARALLEL CIRCUITS MAY BE A MULTIPLE OF THOSE SHOWN ABOVE.
4. LEAD COLORS ARE OPTIONAL. LEADS MUST ALWAYS BE NUMBERED AS SHOWN.

CD0005

REV. DESC: REVISE TO SHOW OPTIONAL COLORS			
REV. LTR: E	BY: JLP	REVISED: 01/19/99 10:15	TDR: 0171435
S00000		FILE: AAA00005140	MDL: -
		MTL: -	

BALDOR ELECTRIC Co.

3PH, DV, 9 LEADS