

**BALDOR • RELIANCE**

---

# Customer information packet

## AFM3532

3HP, 3450RPM, 3PH, 60HZ, 145T, 3528M, TEAO, F1

Class - None

Division - Not Applicable

Copyright © All product information within this document is subject to ABB Motors and Mechanical Inc. copyright © protection, unless otherwise noted.

10/5/2024 2:26:11 AM

## Specifications

Enclosure	TEAO
Frame	145T
Frame Material	Steel
Frequency	60.00 Hz
Haz Area Class and Group	None
Haz Area Division	Not Applicable
Motor Letter Type	Three Phase
Output @ Frequency	3.000 HP @ 60 HZ
Phase	3
Synchronous Speed @ Frequency	3600 RPM @ 60 HZ
Voltage @ Frequency	460.0 V @ 60 HZ 230.0 V @ 60 HZ 208.0 V @ 60 HZ
Agency Approvals	CSA UR
Ambient Temperature	40 °C
Auxillary Box	No Auxillary Box
Auxillary Box Lead Termination	None
Base Indicator	Rigid
Bearing Grease Type	Polyrex EM (-20F +300F)
Blower	None
Current @ Voltage	8.100 A @ 208.0 V 7.600 A @ 230.0 V 3.800 A @ 460.0 V
Design Code	B
Drip Cover	No Drip Cover
Duty Rating	CONT
Efficiency @ 100% Load	82.5 %
Electrically Isolated Bearing	Not Electrically Isolated
Feedback Device	NO FEEDBACK
Front Face Code	Terminal Panel
Front Shaft Indicator	None

## Part detail

Revision	AM
Type	AC
Mech. spec.	35T908
Base	
Status	PRD/A
Elec. spec.	35WGT123
Layout	35LYT908
Eff. date	09-28-2022
CD Diagram	CD0005
Poles	02
Leads	9#18 14" minimum Y
Proprietary	False
Created date	06-22-2007

Heater Indicator	No Heater
High Voltage Full Load Amps	3.8 a
Insulation Class	B
Inverter Code	Not Inverter
KVA Code	K
Lifting Lugs	No Lifting Lugs
Locked Bearing Indicator	No Locked Bearing
Motor Lead Exit	Terminal Panel Or Lead Hole
Motor Lead Quantity/Wire Size	9 @ 18 AWG
Motor Lead Termination	Flying Leads
Motor Standards	NEMA
Motor Type	3528M
Mounting Arrangement	F1
Number of Poles	2
Overall Length	12.74 IN
Power Factor	89
Product Family	General Purpose
Pulley End Bearing Type	Ball
Pulley Face Code	Standard
Pulley Shaft Indicator	Tapped & Key
Rodent Screen	None
Service Factor	1.00
Shaft Diameter	0.875 IN
Shaft Extension Location	Pulley End
Shaft Ground Indicator	No Shaft Grounding
Shaft Rotation	Reversible
Shaft Slinger Indicator	No Slinger
Speed	3450 rpm
Speed Code	Single Speed
Starting Method	Direct on line
Thermal Device - Bearing	None
Thermal Device - Winding	Normally Closed Thermostat
Vibration Sensor Indicator	No Vibration Sensor
Winding Thermal 1	None

**Winding Thermal 2**

**None**

---

**Nameplate**

NP1279L							
<b>CAT.NO.</b>	AFM3532						
<b>SPEC.</b>	35T908T123G1						
<b>HP</b>	3						
<b>VOLTS</b>	208-230/460						
<b>AMP</b>	8.1-7.6/3.8						
<b>RPM</b>	3450						
<b>FRAME</b>	145T	<b>HZ</b>	60	<b>PH</b>	3		
<b>SER.F.</b>	1.00	<b>CODE</b>	K	<b>DES</b>	B	<b>CL</b>	B
<b>NEMA-NOM-EFF</b>	82.5	<b>PF</b>	89				
<b>RATING</b>	40C AMB-CONT						
<b>CC</b>	<b>USABLE AT 208V</b>						N/A
<b>DE</b>	6205	<b>ODE</b>	6203				
<b>ENCL</b>	TEAO	<b>SN</b>					

**AC Induction Motor Performance Data**

Record # 20989

Typical performance - not guaranteed values

<b>Winding: 35WGT123-R011</b>		<b>Type: 3528M</b>		<b>Enclosure: TEFC</b>	
<b>Nameplate Data</b>			<b>460 V, 60 Hz: High Voltage Connection</b>		
<b>Rated Output (HP)</b>	3	<b>Full Load Torque</b>	4.6 LB-FT		
<b>Volts</b>	208-230/460	<b>Start Configuration</b>	direct on line		
<b>Full Load Amps</b>	8.1-7.6/3.8	<b>Breakdown Torque</b>	19.7 LB-FT		
<b>R.P.M.</b>	3450	<b>Pull-up Torque</b>	13.1 LB-FT		
<b>Hz</b>	60 <b>Phase</b>	3	<b>Locked-rotor Torque</b>	17.5 LB-FT	
<b>NEMA Design Code</b>	<b>B KVA Code</b>	K	<b>Starting Current</b>	32.9 A	
<b>Service Factor (S.F.)</b>		1	<b>No-load Current</b>	1.4 A	
<b>NEMA Nom. Eff.</b>	82.5 <b>Power Factor</b>	89	<b>Line-line Res. @ 25°C</b>	5.1 Ω	
<b>Rating - Duty</b>	40C AMB-CONT		<b>Temp. Rise @ Rated Load</b>	68°C	

**Load Characteristics 460 V, 60 Hz, 3 HP**

<b>% of Rated Load</b>	<b>25</b>	<b>50</b>	<b>75</b>	<b>100</b>	<b>125</b>	<b>150</b>
<b>Power Factor</b>	55	74	83	87	88	88
<b>Efficiency</b>	76	83	84.3	84	82.7	80.6
<b>Speed</b>	3559	3525	3490	3452	3409	3358
<b>Line amperes</b>	1.7	2.3	3	3.8	4.7	5.7

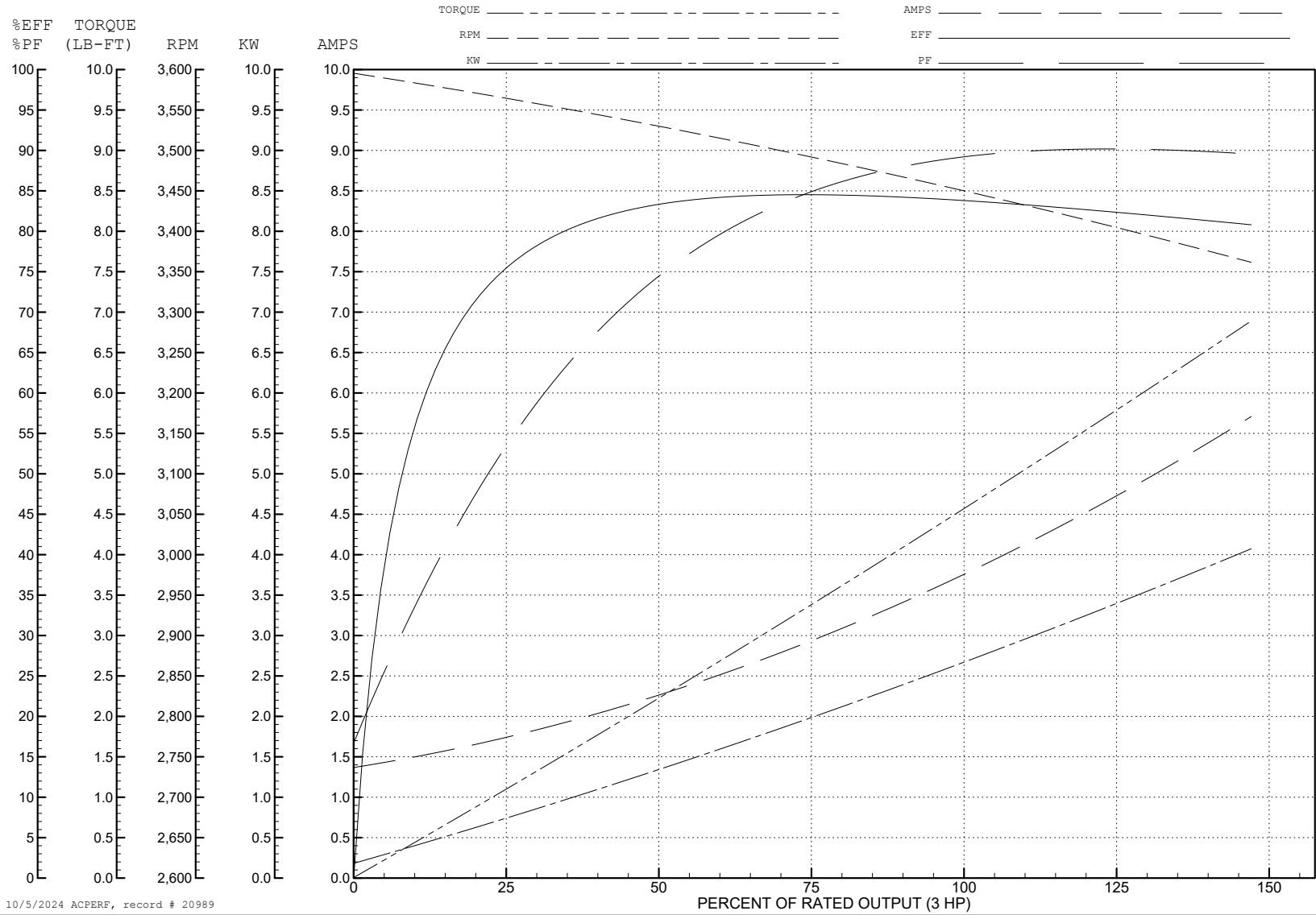
ABB Motors and Mechanical Inc.

WINDING # 35WGT123

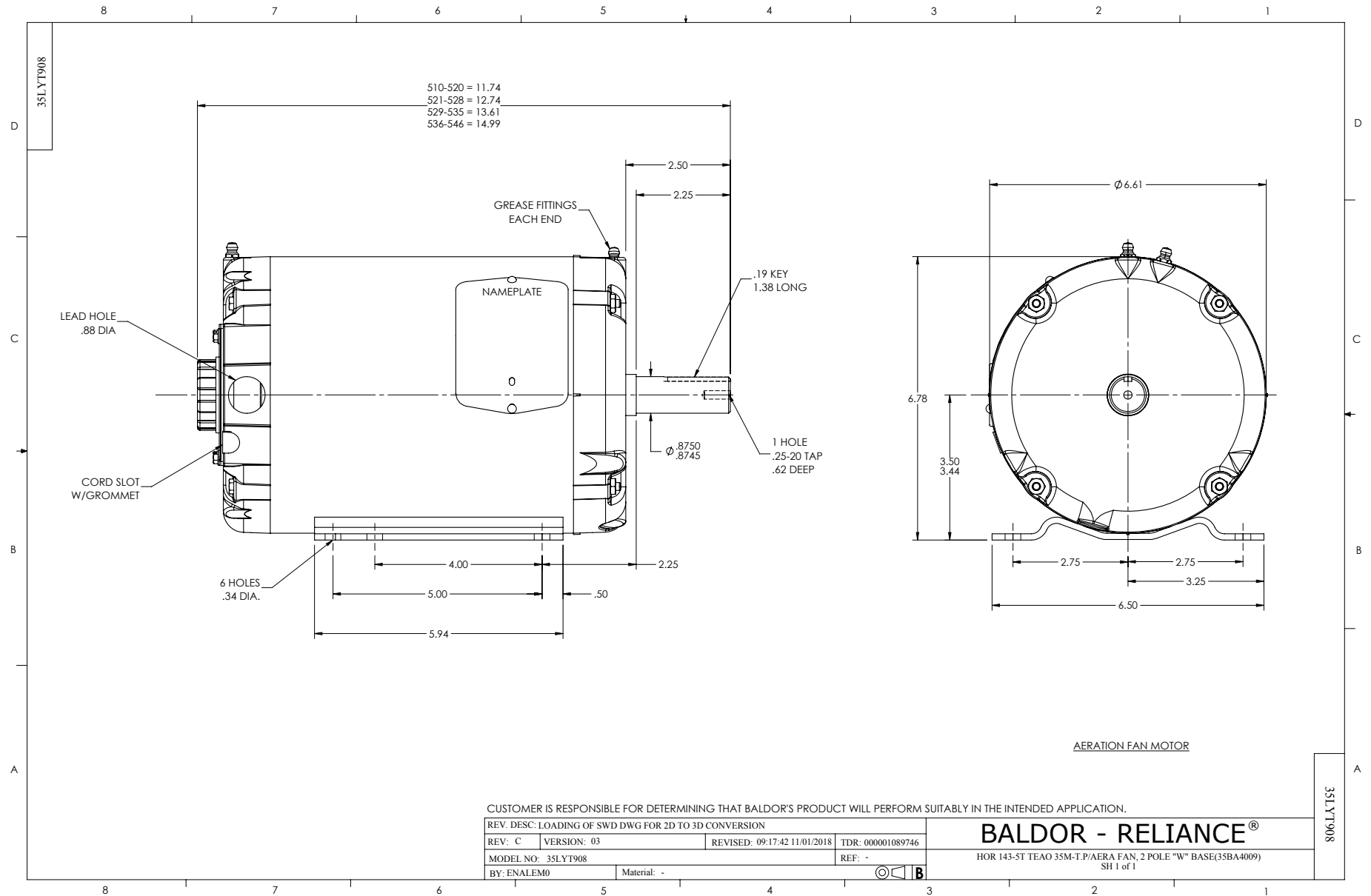
3 HP 3 PH 60 HZ 3450 RPM 460 V 3528M

Typical performance - not guaranteed values.

TORQUES (LB-FT): PO=19.7 PU=13.1 LR=17.5 LRA=32.9



10/5/2024 ACPERF, record # 20989





CD0005



LOW VOLTAGE  
(2Y)



LINE

HIGH VOLTAGE  
(1Y)



LINE

NOTES:

1. INTERCHANGE ANY TWO LINE LEADS TO REVERSE ROTATION.
2. OPTIONAL THERMOSTATS ARE PROVIDED WHEN SPECIFIED.
3. ACTUAL NUMBER OF INTERNAL PARALLEL CIRCUITS MAY BE A MULTIPLE OF THOSE SHOWN ABOVE.
4. LEAD COLORS ARE OPTIONAL. LEADS MUST ALWAYS BE NUMBERED AS SHOWN.

CD0005

REV. DESC: REVISE TO SHOW OPTIONAL COLORS			
REV. LTR: E	BY: JLP	REVISED: 01/19/99 10:15	TDR: 0171435
S00000		FILE: AAA00005140	MDL: -
		MTL: -	

**BALDOR ELECTRIC Co.**

3PH, DV, 9 LEADS