

ABB BALDOR RELIANCE III

Customer information packet

AFL3523A

2HP, 3450RPM, 1PH, 60HZ, 143TZ, 3535L, TEAO, F1

Class - None

Division - Not Applicable

Specifications

Enclosure	TEAO
Frame	143TZ
Frame Material	Steel
Frequency	60.00 Hz
Haz Area Class and Group	None
Haz Area Division	Not Applicable
Motor Letter Type	Cap Start, Induction Run
Output @ Frequency	2.000 HP @ 60 HZ
Phase	1
Synchronous Speed @ Frequency	3600 RPM @ 60 HZ
Voltage @ Frequency	230.0 V @ 60 HZ 115.0 V @ 60 HZ
Agency Approvals	CSA UR
Ambient Temperature	40 °C
Auxiliary Box	NO AUXILLARY BOX
Auxiliary Box Lead Termination	None
Base Indicator	Rigid
Bearing Grease Type	Polyrex EM (-20F +300F)
Blower	None
Current @ Voltage	23.000 A @ 115.0 V 11.500 A @ 230.0 V
Design Code	L
Drip Cover	No Drip Cover
Duty Rating	CONT
Efficiency @ 100% Load	74.0 %
Electrically Isolated Bearing	Not Electrically Isolated
Feedback Device	NO FEEDBACK
Front Face Code	Terminal Panel
Front Shaft Indicator	None
Heater Indicator	No Heater
High Voltage Full Load Amps	11.5 a

Part Detail

Revision	AM
Type	AC
Mech. spec.	35T889
Base	
Status	PRD/A
Elec. spec.	35WG5184
Layout	35LYT889
Eff. date	07-25-2024
CD Diagram	CD0052
Poles	02
Leads	4#14 A&J,2#18 B PH,1#12 #1TH
Proprietary	False
Created date	06-22-2007

Insulation Class	B
Inverter Code	Not Inverter
KVA Code	K
Lifting Lugs	No Lifting Lugs
Locked Bearing Indicator	No Locked Bearing
Motor Lead Exit	Terminal Panel Or Lead Hole
Motor Lead Quantity/Wire Size	4 @ 14 AWG, A&J
Motor Lead Termination	Flying Leads
Motor Standards	NEMA
Motor Type	3535L
Mounting Arrangement	F1
Number of Poles	2
Overall Length	13.61 IN
Power Factor	82
Product Family	General Purpose
Pulley End Bearing Type	Ball
Pulley Face Code	Standard
Pulley Shaft Indicator	Tapped & Key
Rodent Screen	None
RoHS Status	ROHS COMPLIANT
Service Factor	1.00
Shaft Diameter	0.875 IN
Shaft Extension Location	Pulley End
Shaft Ground Indicator	No Shaft Grounding
Shaft Rotation	Reversible: Connected Standard
Shaft Slinger Indicator	No Slinger
Speed	3450 rpm
Speed Code	Single Speed
Starting Method	Direct on line
Thermal Device - Bearing	None
Thermal Device - Winding	None
Vibration Sensor Indicator	No Vibration Sensor
Winding Thermal 1	Automatic Thermal Overload
Winding Thermal 1 Location	SB

Winding Thermal 2

None

Nameplate

NP1280L									
CAT.NO.	AFL3523A								
SPEC.	35T889-5184								
HP	2								
VOLTS	115/230								
AMP	23/11.5								
RPM	3450								
FRAME	143TZ	HZ	60	PH	1				
SER.F.	1.00	CODE	K	DES	L	CL	B		
NEMA-NOM-EFF	74	PF	82						
RATING	40C AMB-CONT								
CC									
DE	6205	ODE	6203						
ENCL	TEAO	SN							

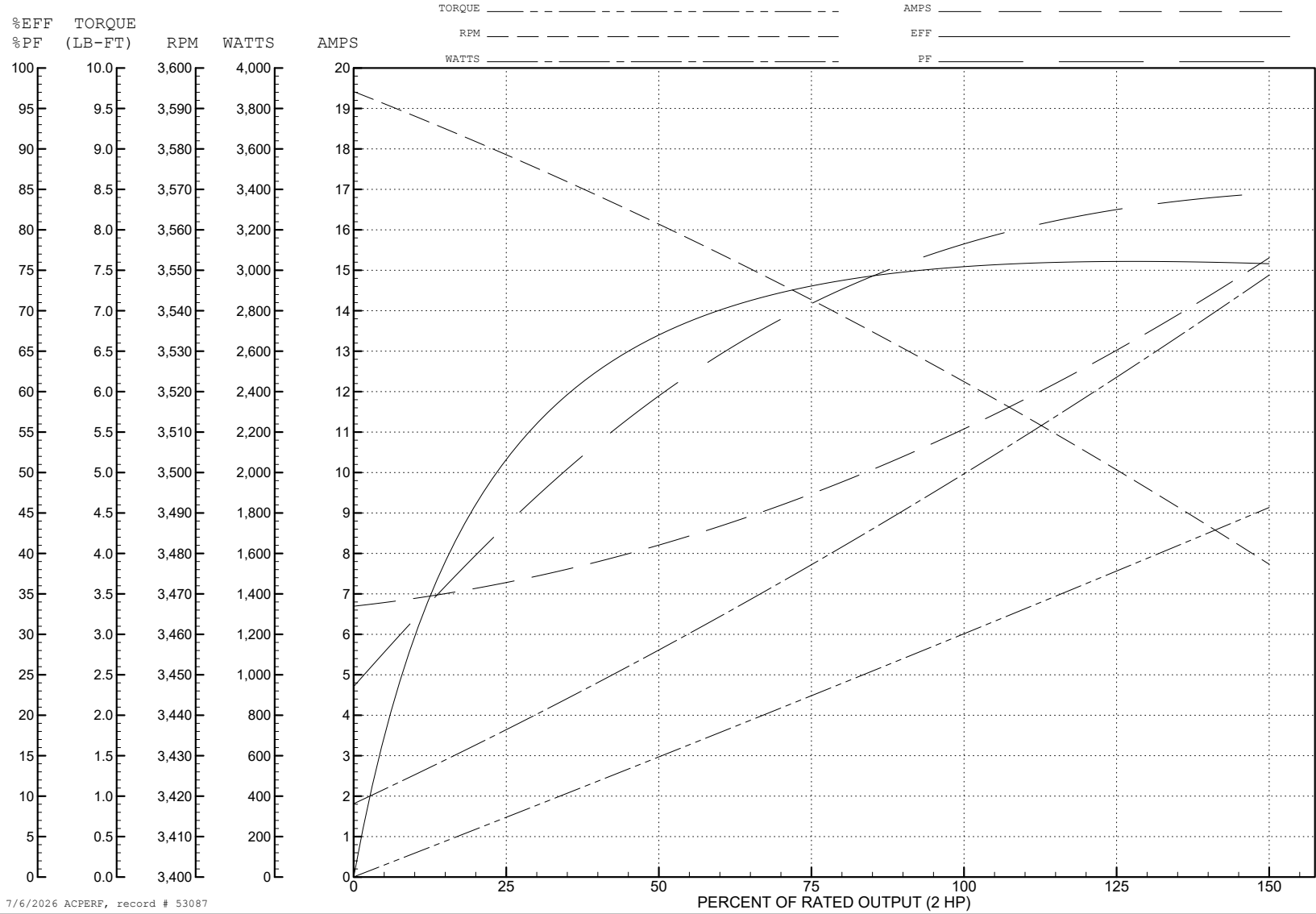
ABB Motors and Mechanical Inc.

WINDING # 35WG5184

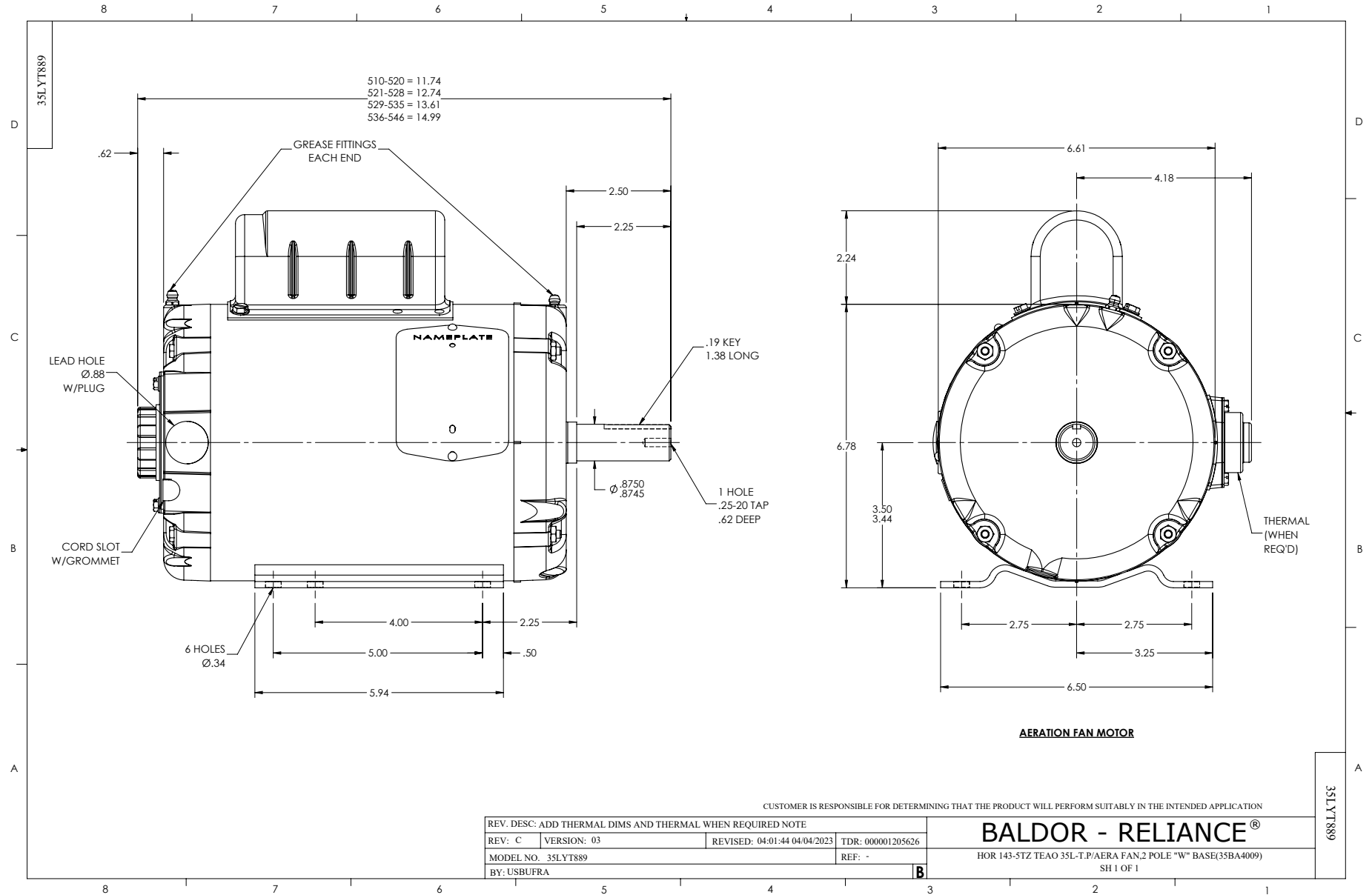
Typical performance - not guaranteed values.

2 HP 1 PH 60 HZ 3450 RPM 230 V 3535L

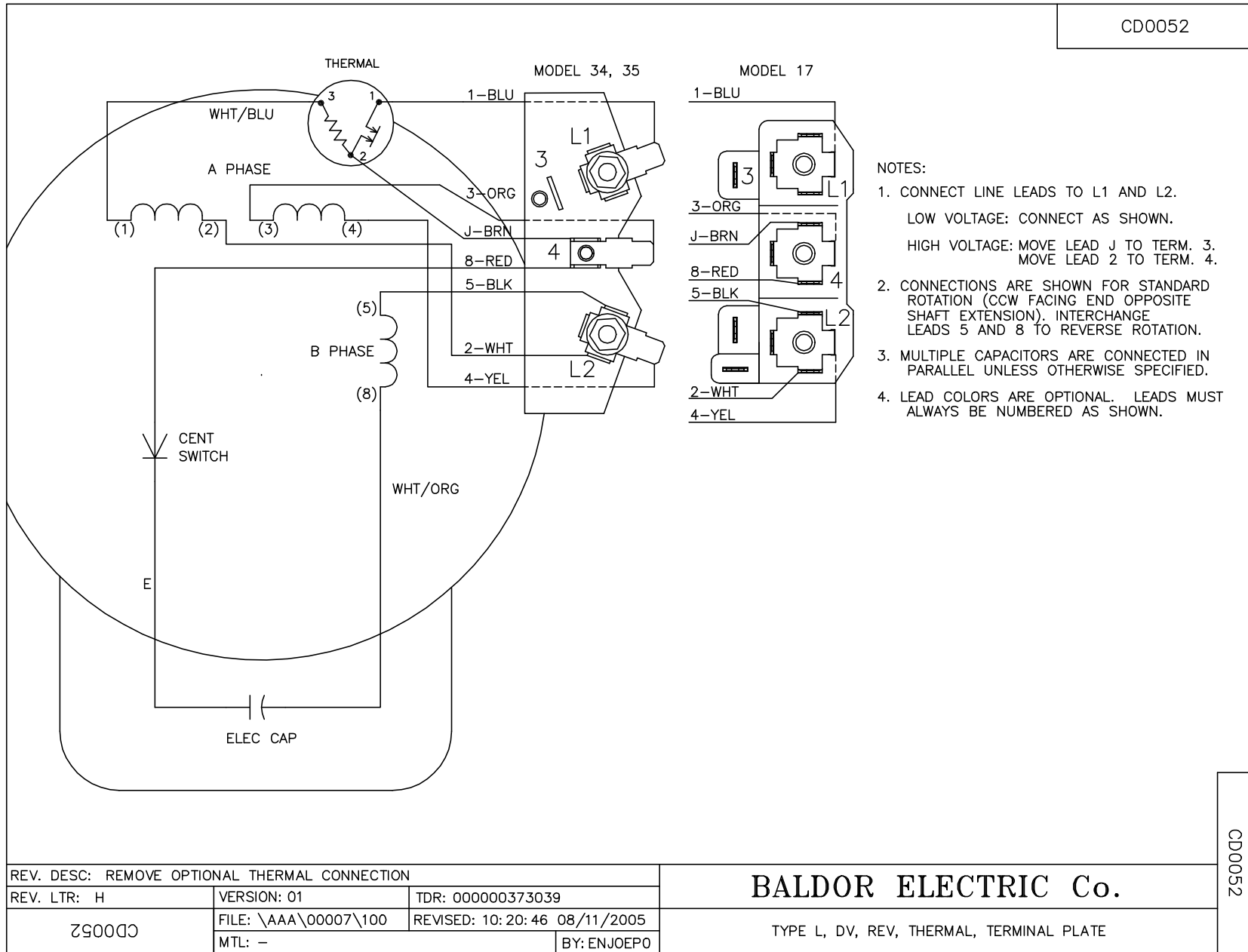
TORQUES (LB-FT): PO=9.75 PU=6.63 LR=7.22 LRA=79.3



7/6/2026 ACPERF, record # 53087



CD0052



REV. DESC: REMOVE OPTIONAL THERMAL CONNECTION		
REV. LTR: H	VERSION: 01	TDR: 000000373039
CD0052	FILE: \AAA\00007\100	REVISED: 10:20:46 08/11/2005
	MTL: -	BY: ENJOEPO

BALDOR ELECTRIC Co.

TYPE L, DV, REV, THERMAL, TERMINAL PLATE

CD0052