

BALDOR • RELIANCE

Customer information packet

AFL3522A

1.5HP, 3450RPM, 1PH, 60HZ, 143TZ, 3528L, TEAO

Class - None

Division - Not Applicable

Specifications

Enclosure	TEAO
Frame	143TZ
Frame Material	Steel
Frequency	60.00 Hz
Haz Area Class and Group	None
Haz Area Division	Not Applicable
Motor Letter Type	Cap Start, Induction Run
Output @ Frequency	1.500 HP @ 60 HZ
Phase	1
Synchronous Speed @ Frequency	3600 RPM @ 60 HZ
Voltage @ Frequency	115.0 V @ 60 HZ 230.0 V @ 60 HZ
Agency Approvals	UR CSA
Ambient Temperature	40 °C
Auxillary Box	No Auxillary Box
Auxillary Box Lead Termination	None
Base Indicator	Rigid
Bearing Grease Type	Polyrex EM (-20F +300F)
Blower	None
Current @ Voltage	16.600 A @ 115.0 V 8.300 A @ 230.0 V 8.600 A @ 208.0 V
Design Code	L
Drip Cover	No Drip Cover
Duty Rating	CONT
Efficiency @ 100% Load	70.0 %
Electrically Isolated Bearing	Not Electrically Isolated
Feedback Device	NO FEEDBACK
Front Face Code	Terminal Panel
Front Shaft Indicator	None
Heater Indicator	No Heater

Part detail

Revision	AK
Type	AC
Mech. spec.	35T889
Base	
Status	PRD/A
Elec. spec.	35WG0525
Layout	35LYT889
Eff. date	07-25-2024
CD Diagram	CD0052
Poles	02
Leads	4#16 A&J,2#18 B PH,1#14 #1TH
Proprietary	False
Created date	06-22-2007

High Voltage Full Load Amps	8.3 a
Insulation Class	B
Inverter Code	Not Inverter
KVA Code	H
Lifting Lugs	No Lifting Lugs
Locked Bearing Indicator	No Locked Bearing
Motor Lead Exit	Terminal Panel Or Lead Hole
Motor Lead Quantity/Wire Size	4 @ 16 AWG, A&J
Motor Lead Termination	Flying Leads
Motor Standards	NEMA
Motor Type	3528L
Mounting Arrangement	F1
Number of Poles	2
Overall Length	12.74 IN
Power Factor	82
Product Family	General Purpose
Pulley End Bearing Type	Ball
Pulley Face Code	Standard
Pulley Shaft Indicator	Tapped & Key
Rodent Screen	None
RoHS Status	ROHS COMPLIANT
Service Factor	1.00
Shaft Diameter	0.875 IN
Shaft Extension Location	Pulley End
Shaft Ground Indicator	No Shaft Grounding
Shaft Rotation	Reversible: Connected Standard
Shaft Slinger Indicator	No Slinger
Speed	3450 rpm
Speed Code	Single Speed
Starting Method	Direct on line
Thermal Device - Bearing	None
Thermal Device - Winding	None
Vibration Sensor Indicator	No Vibration Sensor
Winding Thermal 1	Automatic Thermal Overload

Winding Thermal 1 Location

SB

Winding Thermal 2

None

Nameplate

NP1280L							
CAT.NO.	AFL3522A						
SPEC.	35T889-0525						
HP	1.5						
VOLTS	115/230						
AMP	16.6/8.3						
RPM	3450						
FRAME	143TZ	HZ	60	PH	1		
SER.F.	1.00	CODE	H	DES	L	CL	B
NEMA-NOM-EFF	70	PF	82				
RATING	40C AMB-CONT						
CC							
DE	6205	ODE	6203				
ENCL	TEAO	SN					

AC Induction Motor Performance Data

Record # 8080

Typical performance - not guaranteed values

Winding: 35WG0525-R001		Type: 3528L	Enclosure: TEFC	
Nameplate Data		230 V, 60 Hz: High Voltage Connection		
Rated Output (HP)	1.5	Full Load Torque	2.3 LB-FT	
Volts	115/230	Start Configuration	direct on line	
Full Load Amps	16.6/8.3	Breakdown Torque	5.6 LB-FT	
R.P.M.	3450	Pull-up Torque	4.2 LB-FT	
Hz	60 Phase	1	Locked-rotor Torque	5.5 LB-FT
NEMA Design Code	L KVA Code	H	Starting Current	42 A
Service Factor (S.F.)		1	No-load Current	3.8 A
NEMA Nom. Eff.	70 Power Factor	82	Line-line Res. @ 25°C	1.26 Ω A Ph 1.23 Ω B Ph
Rating - Duty		40C AMB-CONT	Temp. Rise @ Rated Load	70°C

Load Characteristics 230 V, 60 Hz, 1.5 HP

% of Rated Load	25	50	75	100	125	150
Power Factor	52	69	78	84	87	88
Efficiency	54.9	67.7	71.6	72.4	71.2	68.4
Speed	3568	3543	3518	3485	3452	3409
Line amperes	4.4	5.4	6.6	8.3	9.9	12

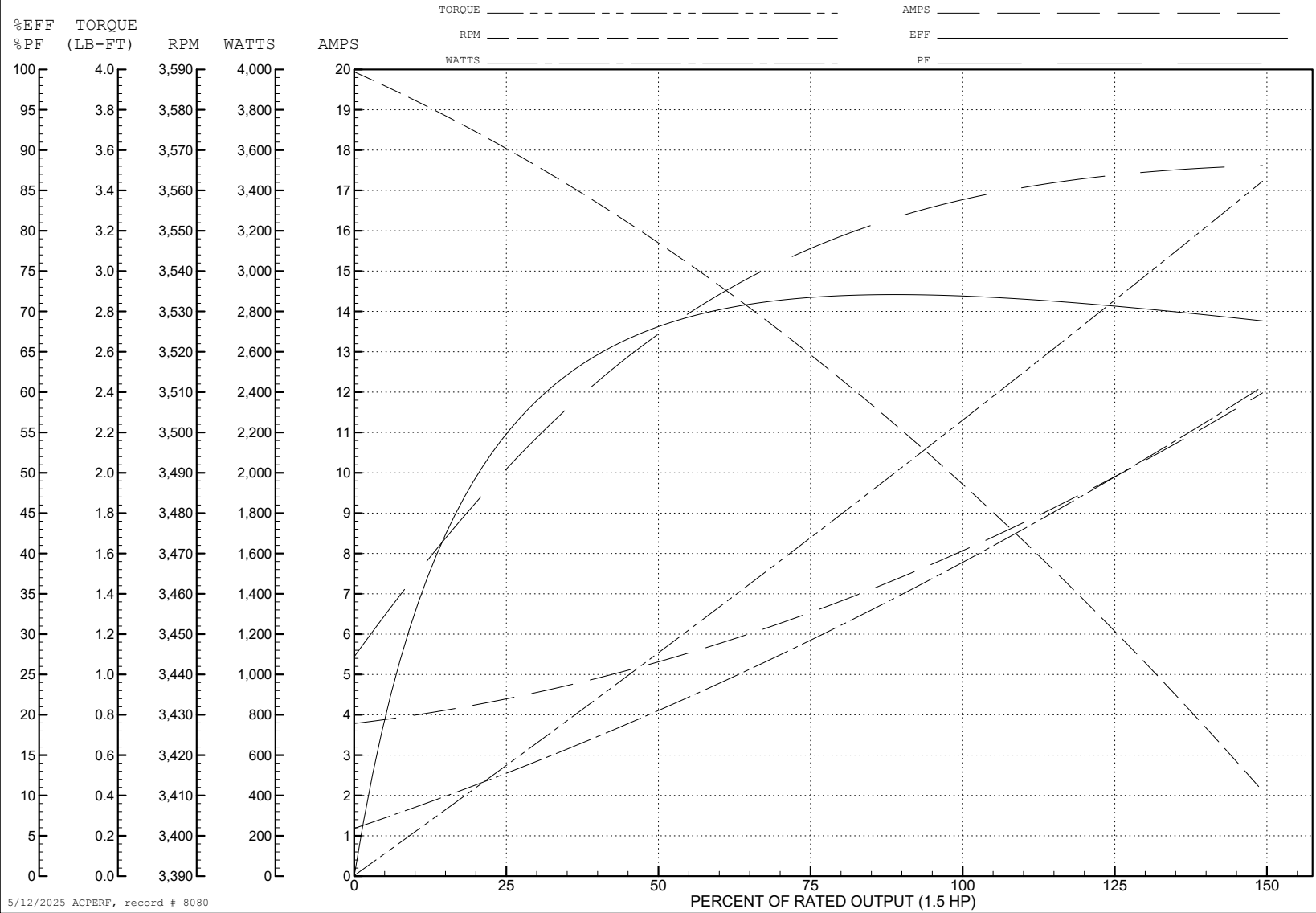
ABB Motors and Mechanical Inc.

WINDING # 35WG0525

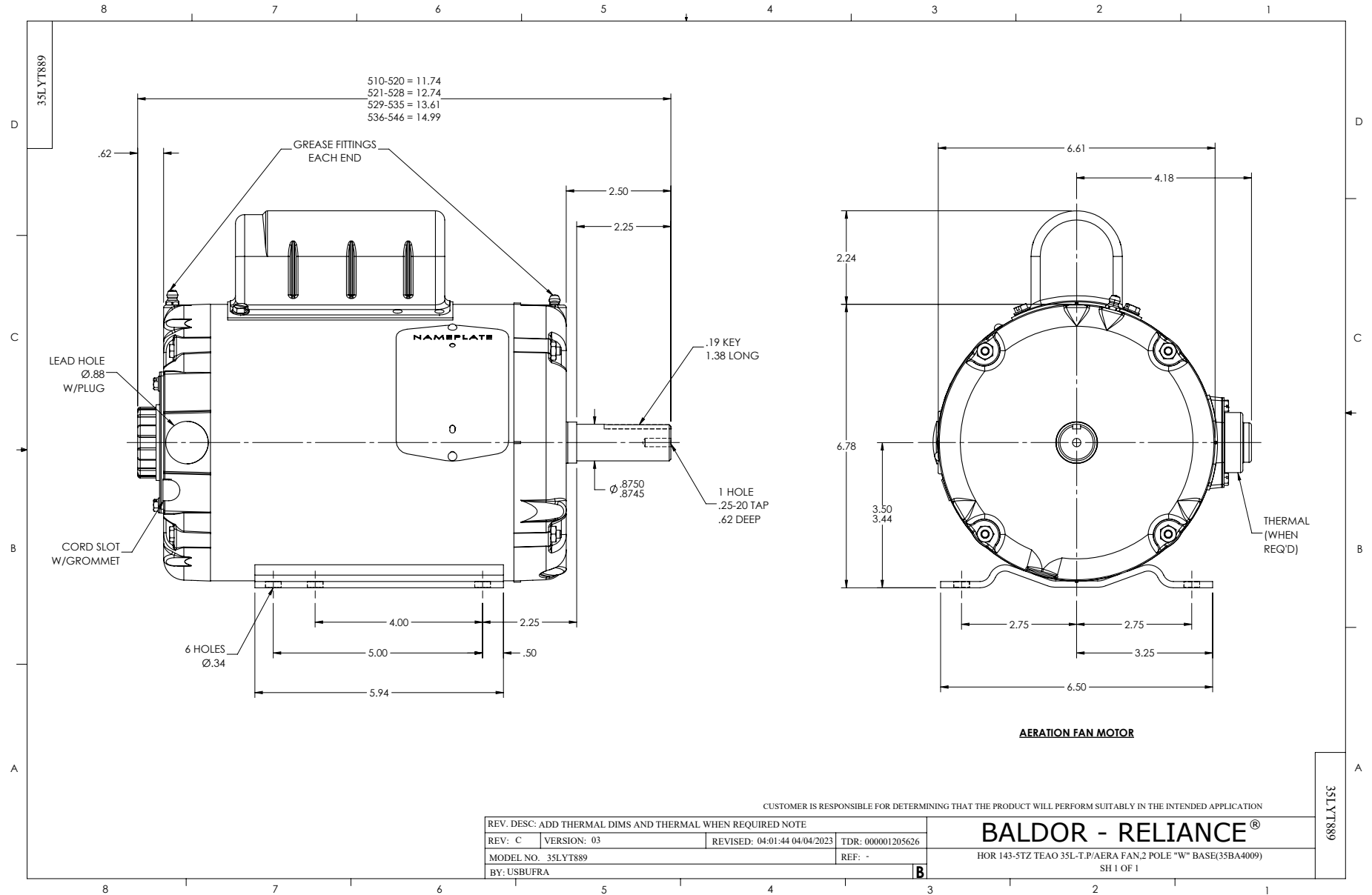
Typical performance - not guaranteed values.

1.5 HP 1 PH 60 HZ 3450 RPM 230 V 3528L

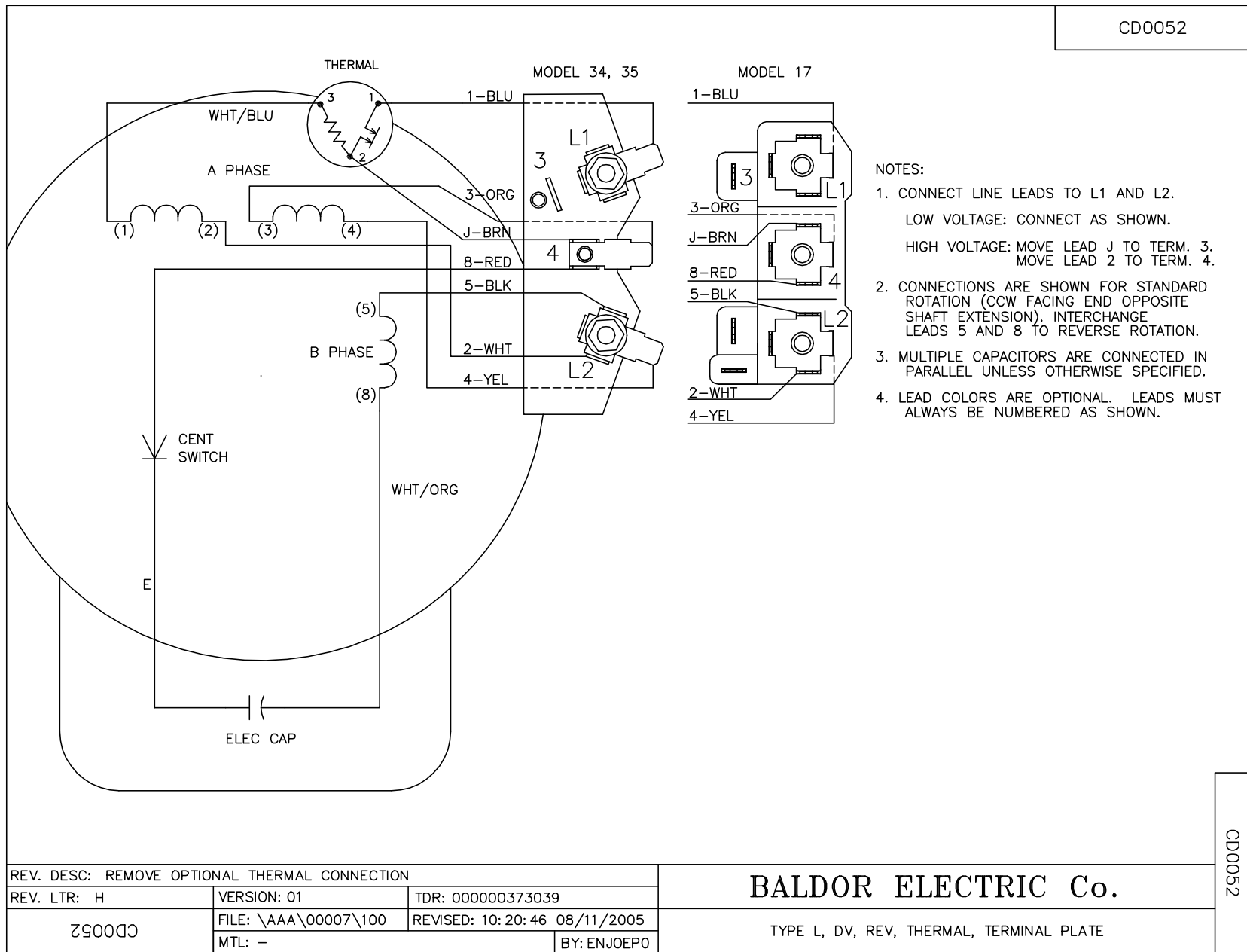
TORQUES (LB-FT): PO=5.6 PU=4.2 LR=5.5 LRA=42



5/12/2025 ACPERF, record # 8080



CD0052



REV. DESC: REMOVE OPTIONAL THERMAL CONNECTION		
REV. LTR: H	VERSION: 01	TDR: 000000373039
CD0052	FILE: \AAA\00007\100	REVISED: 10:20:46 08/11/2005
	MTL: -	BY: ENJOEPO

BALDOR ELECTRIC Co.

TYPE L, DV, REV, THERMAL, TERMINAL PLATE

CD0052