

BALDOR • RELIANCE

Customer information packet

AEM4314-4

60HP, 1785RPM, 3PH, 60HZ, 405U, TEFC, FOOT,
Class - None
Division - Not Applicable

Specifications

Enclosure	TEFC
Frame	405U
Frame Material	Iron
Frequency	60.00 Hz
Haz Area Class and Group	None
Haz Area Division	Not Applicable
Motor Letter Type	Three Phase
Output @ Frequency	60.000 HP @ 60 HZ
Phase	3
Synchronous Speed @ Frequency	1800 RPM @ 60 HZ
Voltage @ Frequency	460.0 V @ 60 HZ
Agency Approvals	CSA EEV CCSA US
Ambient Temperature	65 °C
Auxiliary Box	NO AUXILLARY BOX
Base Indicator	Rigid
Bearing Grease Type	Polyrex EM (-20F +300F)
Current @ Voltage	66.600 A @ 460.0 V
Design Code	B
Drip Cover	No Drip Cover
Duty Rating	CONT
Efficiency @ 100% Load	95.0 %
Feedback Device	NO FEEDBACK
Heater Indicator	No Heater
High Voltage Full Load Amps	66.6 a
Insulation Class	F
Inverter Code	Inverter Ready
KVA Code	F
Lifting Lugs	Standard Lifting Lugs
Motor Lead Quantity/Wire Size	3 @ 2 AWG
Motor Standards	Other
Motor Type	A40064M

Part detail

Revision	B
Type	AC
Mech. spec.	
Base	
Status	PRD/A
Elec. spec.	A40WG5174
Layout	617429-100
Eff. date	05-07-2024
CD Diagram	416820-036
Poles	04
Leads	3#2
Proprietary	False
Created date	07-21-2016

Mounting Arrangement	F1
Number of Poles	4
Overall Length	38.08 IN
Power Factor	89
Pulley End Bearing Type	Ball
Pulley Face Code	Standard
Service Factor	1.00
Shaft Diameter	2.375 IN
Shaft Ground Indicator	No Shaft Grounding
Shaft Rotation	Reversible
Shaft Slinger Indicator	Shaft Slinger
Speed	1780 rpm
Speed Code	Single Speed
Starting Method	Direct on line
Thermal Device - Bearing	None
Thermal Device - Winding	None

Nameplate

NP2492L

SPEC NO.	P40G3946			CAT.NO.	AEM4314-4			FRAME	405U
HP	60	VOLTS	460	PHASE	3	DESIGN	B	TYPE	P
RPM	1780	AMPS	66.6	HZ	60	AMB	65	SF	1.00
DRIVE END BEARING	80BC03JPP30A		LUBRICATION	DUTY		CONT	INSUL.CLASS		F
OPP D.E. BEARING	80BC03JPP30A		MOBIL POLYREX EM		ENCL	TEFC	CODE	F	
AMB	ALERNATE RATING-S.F.		ALTITUDE		NEMA-NOM-EFF		95		
	65	1.00	3300	GUARANTEED EFFICIENCY		94.1			
SER.NO.									
	MOTOR WEIGHT								

S/O	FRAME	HP	TYPE	PHASE/ HERTZ	RPM	VOLTS
	40ST	60	P	3/60	1780	460

AMPS	DUTY	AMB °C/ INSUL	S.F.	NEMA DESIGN	CODE LETTER	ENCLOSURE
66.6	CONT	65/F	1.00	B	F	TEFC

E/S	ROTOR	TEST S.O.	TEST DATE	STATOR RES. @25 °C OHMS (BETWEEN LINES)
-	418142031WE	---	---	.0919

PERFORMANCE


LOAD	HP	AMPERES	RPM	% POWER FACTOR	% EFFICIENCY
NO LOAD	0	11.4	1800	9.40	0
1/4	15.0	20.8	1796	73.5	92.2
2/4	30.0	34.1	1791	86.8	94.8
3/4	45.0	49.7	1787	89.0	95.3
4/4	60.0	66.6	1781	88.7	95.0
5/4	75.0	84.6	1775	87.9	94.5

SPEED TORQUE

	RPM	TORQUE % FULL LOAD	TORQUE LB.-FT.	AMPERES
LOCKED ROTOR	0	170	300	410
PULL UP	1280	141	250	349
BREAKDOWN	1724	210	371	190
FULL LOAD	1781	100	177	66.6

AMPERES SHOWN FOR 460 VOLT CONNECTION. IF OTHER CONNECTIONS ARE AVAILABLE, THE AMPERES WILL VARY INVERSELY WITH THE RATED VOLTAGE.

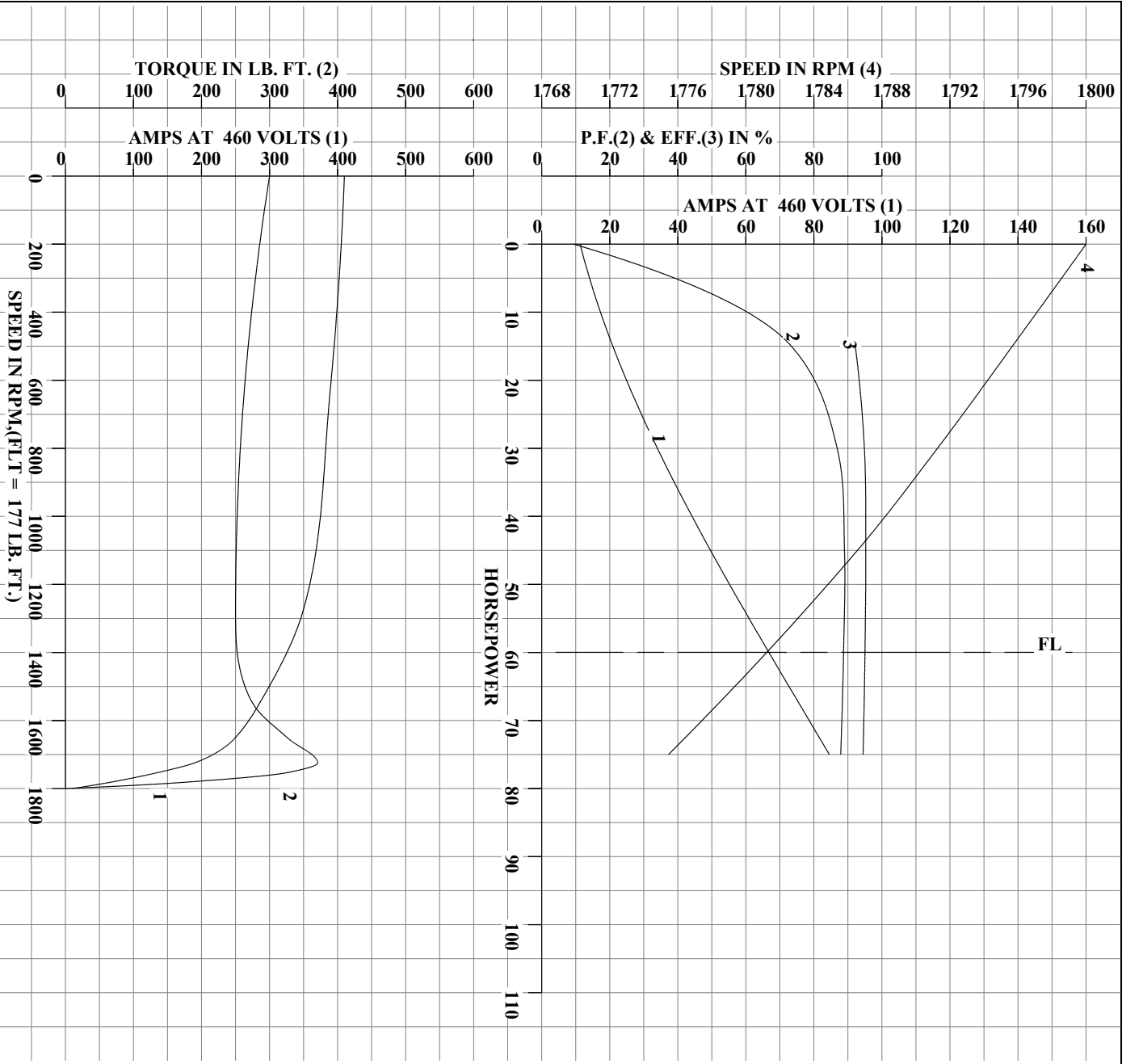
TYPICAL DATA

	DRAWN BY: W.L. SMITH CHECKED BY: C.J. AMISON APPROVED BY: W.L. SMITH DATE: 01/03/25	AC MOTOR PERFORMANCE DATA	A40WG5174-R004 DATE ISSUED 01/03/25
---	--	---------------------------------	--

USWESM11

Printed on 01/03/2025 10:15 AM

REL.S.O.	405T	RPM	1780	S.F.	1.00	ROTOR	418142031WE
FRAME	405T	VOLTS	460	NEMA DESIGN	B	TEST S.O.	TYPICAL DATA
HP	60	AMPS	66.6	CODE LETTER	F	TEST DATE	---
TYPE	P	DUTY CONT		ENCLOSURE	TEFC	STATOR RES. @ 25°C	.0919
PHASE/HERTZ	3/60	AMB °C/INSUL	65/F	E/S	-	OHMS (BETWEEN LINES)	



AMPERES SHOWN FOR 460 VOLT CONNECTION, IF OTHER VOLTAGE CONNECTIONS ARE AVAILABLE, THE AMPERES WILL VARY INVERSELY WITH THE RATED VOLTAGE.



DRAWN BY: W.L.SMITH
 CHECKED BY: C.E.JAMISON
 APPROVED BY: W.L.SMITH
 DATE: 01/03/25

AC MOTOR
 PERFORMANCE
 DATA

A40WGS174-R004

ISSUE DATE 01/03/25

USWESM11

Printed on 01/03/2025 10:15 AM

617429-100

DUTY MASTER ALTERNATING CURRENT MOTORS

SQUIRREL-CAGE INDUCTION

ENCLOSURE: TOTALLY ENCLOSED

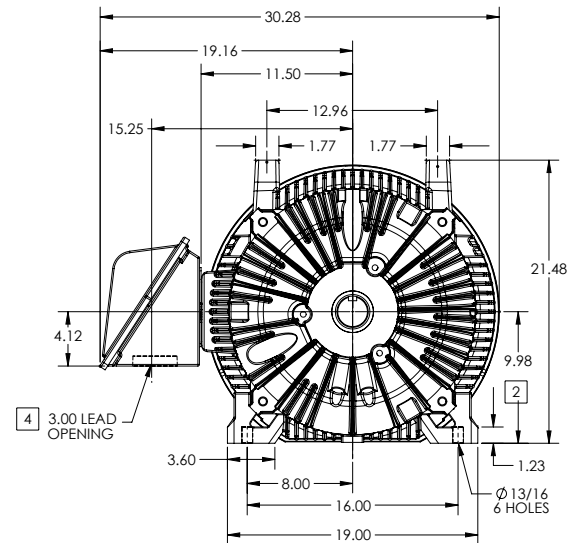
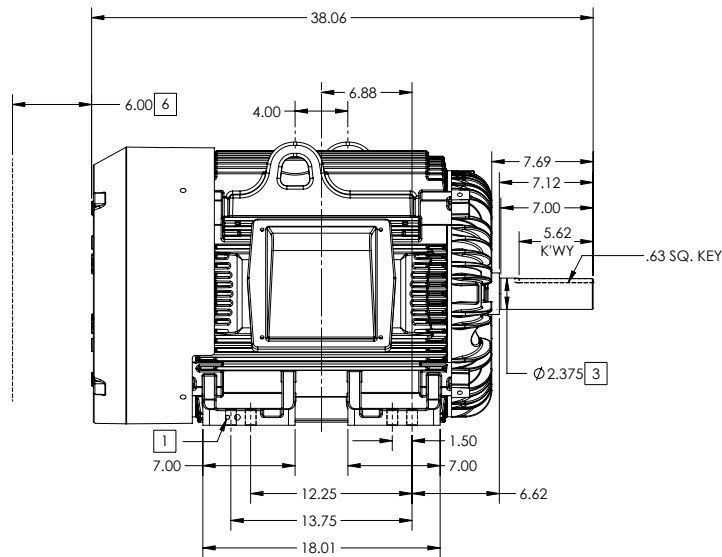
FRAME G405U ABOVE NEMA RATINGS

COOLING: FAN COOLED

MOUNTING: FOOT

INCLUDES 404U FRAME MOUNTING HOLES

U-FRAME/ AUTOMOTIVE DUTY ENCLOSURE



1. GROUND HOLES QTY 1 1/2-13 TAP; QTY 1 3/8-16 TAP
2. VARIES +.00,-.06
3. VARIES +.00,-.001
4. ON STANDARD MOTORS THIS IS CONDUIT SIZE. ON XT AND CORROSION PROOF MOTOR THIS IS PIPE TAP.
5. MOTOR WEIGHTS MAY VARY BY 15% DEPENDING ON RATING.
6. OBSTRUCTION MUST NOT ENCROACH ON AIR INLET

[5] WEIGHT (LBS): 1370

CONDUIT BOX LOCATED ON OPPOSITE SIDE WHEN F-2.
IF MOUNTING CLEARANCE DETAILS ARE REQUIRED, CONSULT FACTORY.
MAXIMUM PERMISSIBLE SHAFT RUNOUT WHEN MEASURED AT END OF
STANDARD SHAFT EXTENSION IS .003" T.I.R. TO 5 INCH DIA.

DIMENSIONS ARE IN INCHES; SEE SHEET 2 FOR DIMENSIONS IN MILLIMETERS

CUSTOMER IS RESPONSIBLE FOR DETERMINING THAT MOTOR PERFORMANCE IS SUITABLE IN THE APPLICATION.

SHEET NUMBER
1 OF 2

001-627219

REV. DESC: CHG SHAFT TO MEET "BA" REQUIREMENT OF 6.62			
REV: B	VERSION: 02	REVISED: 08-24-51 05/31/2017	TDR: 00000983755
MODEL NO. 617429-100		REF:	
BY: RAGGDM	Material:	C	

BALDOR

G405U/404U STD - FOOTED - U-FRAME AUTOMOTIVE DUTY ENCLOSURE

617429-100

617429-100

DUTY MASTER ALTERNATING CURRENT MOTORS

SQUIRREL-CAGE INDUCTION

ENCLOSURE: TOTALLY ENCLOSED

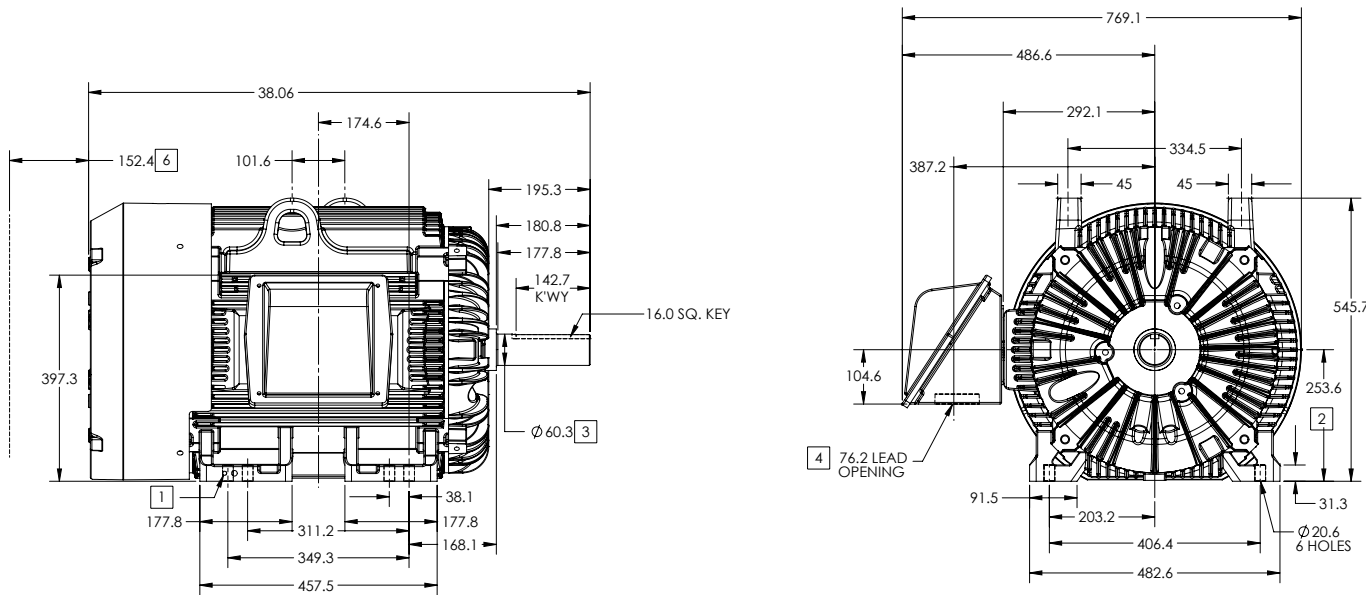
FRAME G405T ABOVE NEMA RATINGS

COOLING: FAN COOLED

MOUNTING: FOOT

INCLUDES 404T FRAME MOUNTING HOLES

U-FRAME/ AUTOMOTIVE DUTY ENCLOSURE



1. GROUND HOLES QTY 1 1/2-13 TAP; QTY 1 3/8-16 TAP
2. VARIES +0,-1.5
3. VARIES +.00,-.03
4. ON STANDARD MOTORS THIS IS CONDUIT SIZE. ON XT AND CORROSION PROOF MOTOR THIS IS PIPE TAP.
5. MOTOR WEIGHTS MAY VARY BY 15% DEPENDING ON RATING.
6. OBSTRUCTION MUST NOT ENCROACH ON AIR INLET

[5] WEIGHT (KGS): 630

CONDUIT BOX LOCATED ON OPPOSITE SIDE WHEN F-2.
IF MOUNTING CLEARANCE DETAILS ARE REQUIRED, CONSULT FACTORY.
MAXIMUM PERMISSIBLE SHAFT RUNOUT WHEN MEASURED AT END OF
STANDARD SHAFT EXTENSION IS .08 MM T.I.R. TO 127 MM DIA.

DIMENSIONS ARE IN MILLIMETERS; SEE SHEET 1 FOR DIMENSIONS IN INCHES

CUSTOMER IS RESPONSIBLE FOR DETERMINING THAT MOTOR PERFORMANCE IS SUITABLE IN THE APPLICATION.

SHEET NUMBER
2 OF 2

001-627219

REV. DESC. CHG. SHAFT TO MEET "BA" REQUIREMENT OF 6.62			
REV: B	VERSION: 02	REVISED: 08-54-51 05/31/2017	TDR: 00000983755
MODEL NO. 617429-100		REF:	
BY: RAGGDM	Material:	C	

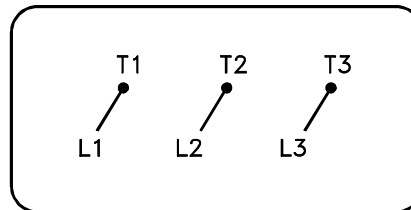
BALDOR

G405U/404U STD - FOOTED - U-FRAME AUTOMOTIVE DUTY ENCLOSURE

617429-100

416820-036

A-C MOTOR
CONNECTION DIAGRAM
STANDARD 3 LEAD CONNECTED



(N.P. 1575-BA)

416820-036

REV. DESC: LOADED TO BUS, C/R 335225		
REV. LTR: -	VERSION: 00	TDR: 000000538207
FILE: \MGA\00000\682	REVISED: 11:54:06 04/30/2010	
MTL: -	BY: RAGRA	

BALDOR

CONN DIAG - STANDARD 3 LEAD
SH 1 of 1