



Customer information packet

AEM3689-4

2HP, 1760RPM, 3PH, 60HZ, 184, 0626M, TEFC, F1, N

Class - None

Division - Not Applicable

Specifications

Enclosure	TEFC
Frame	184
Frame Material	Iron
Frequency	60.00 Hz
Haz Area Class and Group	None
Haz Area Division	Not Applicable
Motor Letter Type	Three Phase
Output @ Frequency	2.000 HP @ 60 HZ
Phase	3
Synchronous Speed @ Frequency	1800 RPM @ 60 HZ
Voltage @ Frequency	460.0 V @ 60 HZ
Agency Approvals	UR CSA
Ambient Temperature	65 °C
Auxiliary Box	NO AUXILLARY BOX
Auxiliary Box Lead Termination	None
Base Indicator	Rigid
Bearing Grease Type	Polyrex EM (-20F +300F)
Blower	None
Current @ Voltage	2.700 A @ 460.0 V
Design Code	B
Drip Cover	No Drip Cover
Duty Rating	CONT
Efficiency @ 100% Load	88.5 %
Electrically Isolated Bearing	Not Electrically Isolated
Feedback Device	NO FEEDBACK
Front Face Code	Standard
Front Shaft Indicator	None
Heater Indicator	No Heater
High Voltage Full Load Amps	2.7 a
Insulation Class	F
Inverter Code	Inverter Ready

Part detail

Revision	H
Type	AC
Mech. spec.	06F062
Base	
Status	PRD/A
Elec. spec.	06WGX252
Layout	06LYF062
Eff. date	03-26-2021
CD Diagram	CD0006
Poles	04
Leads	3#16
Proprietary	False
Created date	02-25-2015

KVA Code	K
Lifting Lugs	Standard Lifting Lugs
Locked Bearing Indicator	No Locked Bearing
Motor Lead Exit	Ko Box
Motor Lead Quantity/Wire Size	3 @ 16 AWG
Motor Lead Termination	Flying Leads
Motor Standards	NEMA
Motor Type	0626M
Mounting Arrangement	F1
Number of Poles	4
Overall Length	14.74 IN
Power Factor	77
Product Family	Automotive (Not For DC)
Pulley End Bearing Type	Ball
Pulley Face Code	Standard
Pulley Shaft Indicator	Standard
Rodent Screen	None
RoHS Status	ROHS COMPLIANT
Service Factor	1.00
Shaft Diameter	0.875 IN
Shaft Extension Location	Pulley End
Shaft Ground Indicator	No Shaft Grounding
Shaft Rotation	Reversible
Shaft Slinger Indicator	No Slinger
Speed	1760 rpm
Speed Code	Single Speed
Starting Method	Direct on line
Thermal Device - Bearing	None
Thermal Device - Winding	None
Vibration Sensor Indicator	No Vibration Sensor
Winding Thermal 1	None
Winding Thermal 2	None

Nameplate

NP1404									
CAT.NO.	AEM3689-4								
SPEC.	06F062X252G1								
VOLTS	460								
AMP	2.7								
RPM	1760		HP	2					
FRAME	184		HZ	60		PH	3		
SER.F.	1.00		CODE	K		DES	B		CL F
NEMA-NOM-EFF	88.5		PF	77					
G.MIN.EFF	84.0		CC	010A					
RATING	65C AMB-CONT								
LUBRICATION	POLYREX EM								
DE	6206		ODE	6205					
ENCL	TEFC		SER. #						

Accessories

Part number	Description	Multiplier
36-1037	C FACE KIT	A8

AC Induction Motor Performance Data

Record # 50988

Typical performance - not guaranteed values

Winding: 06WGX252-R016		Type: 0626M		Enclosure: TEFC	
Nameplate Data			460 V, 60 Hz: Single Voltage Motor		
Rated Output (HP)	2	Full Load Torque	5.99 LB-FT		
Volts	460	Start Configuration	direct on line		
Full Load Amps	2.7	Breakdown Torque	20.3 LB-FT		
R.P.M.	1760	Pull-up Torque	10.9 LB-FT		
Hz	60 Phase	3	Locked-rotor Torque	12.5 LB-FT	
NEMA Design Code	B KVA Code	K	Starting Current	19.6 A	
Service Factor (S.F.)		1	No-load Current	1.53 A	
NEMA Nom. Eff.	88.5 Power Factor	77	Line-line Res. @ 25°C	6.7414 Ω	
Rating - Duty		65C AMB-CONT	Temp. Rise @ Rated Load	24°C	

Load Characteristics 460 V, 60 Hz, 2 HP

% of Rated Load	25	50	75	100	125	150
Power Factor	35	55	68	75	80	82
Efficiency	81.8	88	89.3	89.2	88.5	87.2
Speed	1790.2	1781.4	1771.7	1761.2	1750.2	1737.1
Line amperes	1.67	1.93	2.33	2.8	3.33	3.94

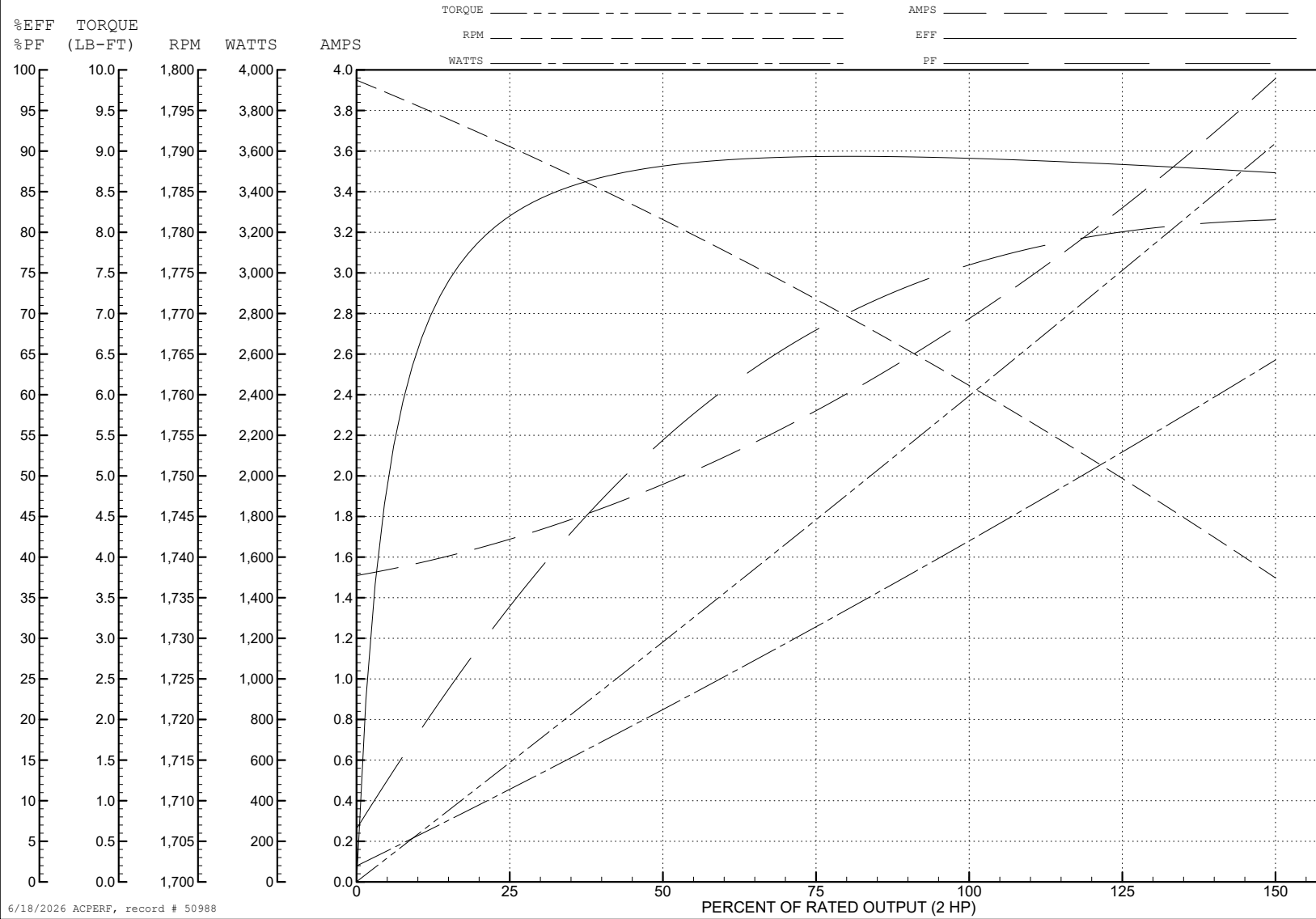
ABB Motors and Mechanical Inc.

WINDING # 06WGX252

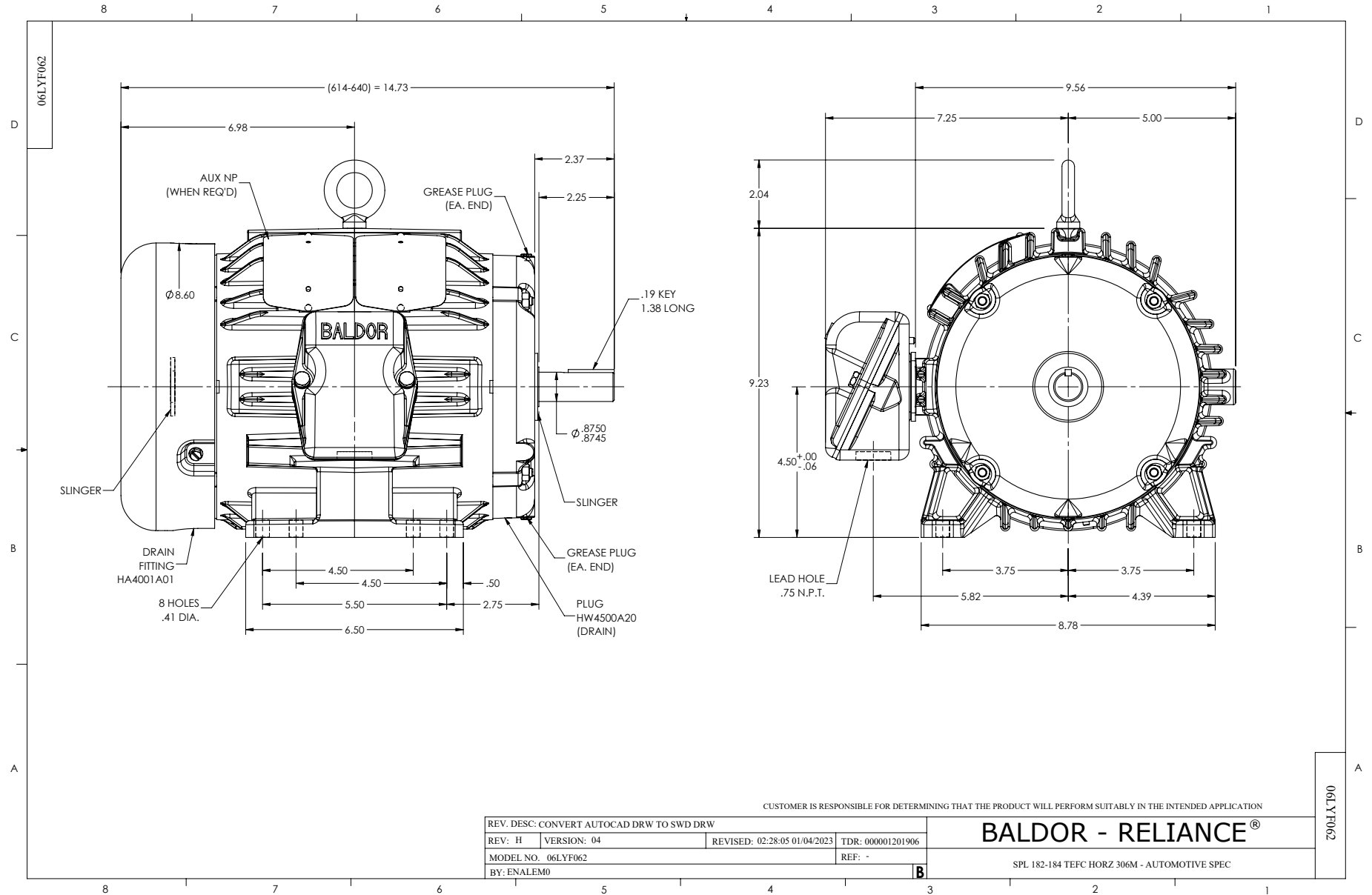
Typical performance - not guaranteed values.

2 HP 3 PH 60 HZ 1760 RPM 460 V 0626M

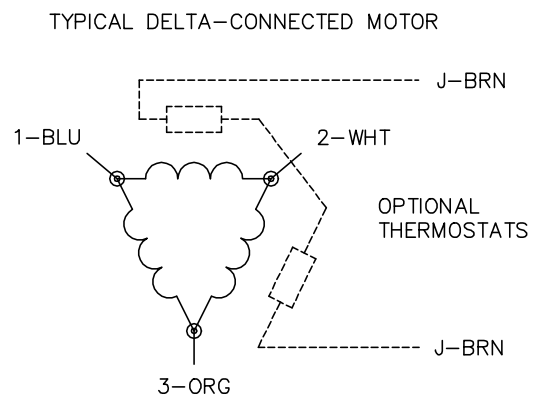
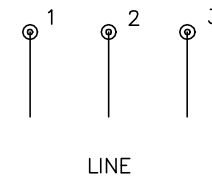
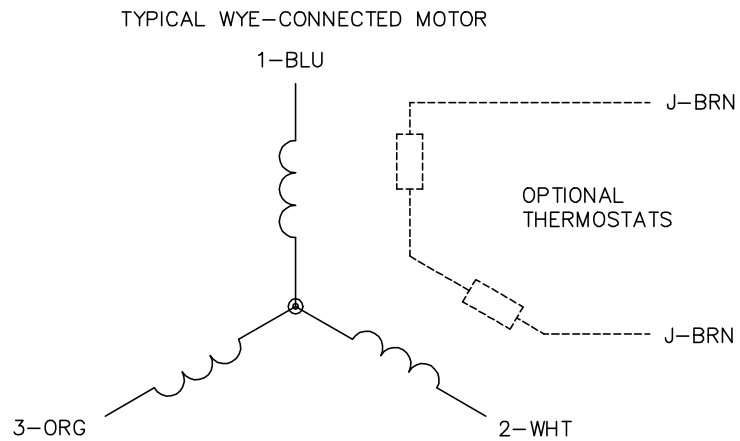
TORQUES (LB-FT): PO=20.3 PU=10.9 LR=12.5 LRA=19.6



6/18/2026 ACPERF, record # 50988



CD0006



NOTES:

1. THREE LEAD MOTOR MAY BE EITHER WYE CONNECTED OR DELTA CONNECTED.
2. INTERCHANGE ANY TWO LINE LEADS TO REVERSE ROTATION.
3. OPTIONAL THERMOSTATS ARE PROVIDED WHEN SPECIFIED.
4. ACTUAL NUMBER OF INTERNAL PARALLEL CIRCUITS MAY VARY.
5. LEAD COLORS ARE OPTIONAL. LEADS MUST BE NUMBERED AS SHOWN.

CD0006

REV. DESC: ADD CLASS CONN00000007		
REV. LTR: E	VERSION: 01	TDR: 000001099922
FILE: \AAA\00005\141	REVISED: 10:24:49 02/19/2019	BY: ENBRIRO
MTL: -		© □

BALDOR - RELIANCE®

3PH, SV, 3 LEADS, WYE OR DELTA CONNECTED

SH 1 of 1